

2009-2010 AISD Student Climate Survey

Research indicates that school climate can be either a positive influence on the learning environment or a significant barrier to learning. In AISD, schools that performed better on TAKS also had higher student climate ratings (Schmitt & Carney, 2008). These survey results

In Spring 2010, 275 students returned surveys for Galindo, representing 87% of eligible students from Galindo (compared to the district Elementary School response rate, 87%). The table below shows the total number and percentage of students surveyed from each eligible grade at Galindo in 2009-2010.

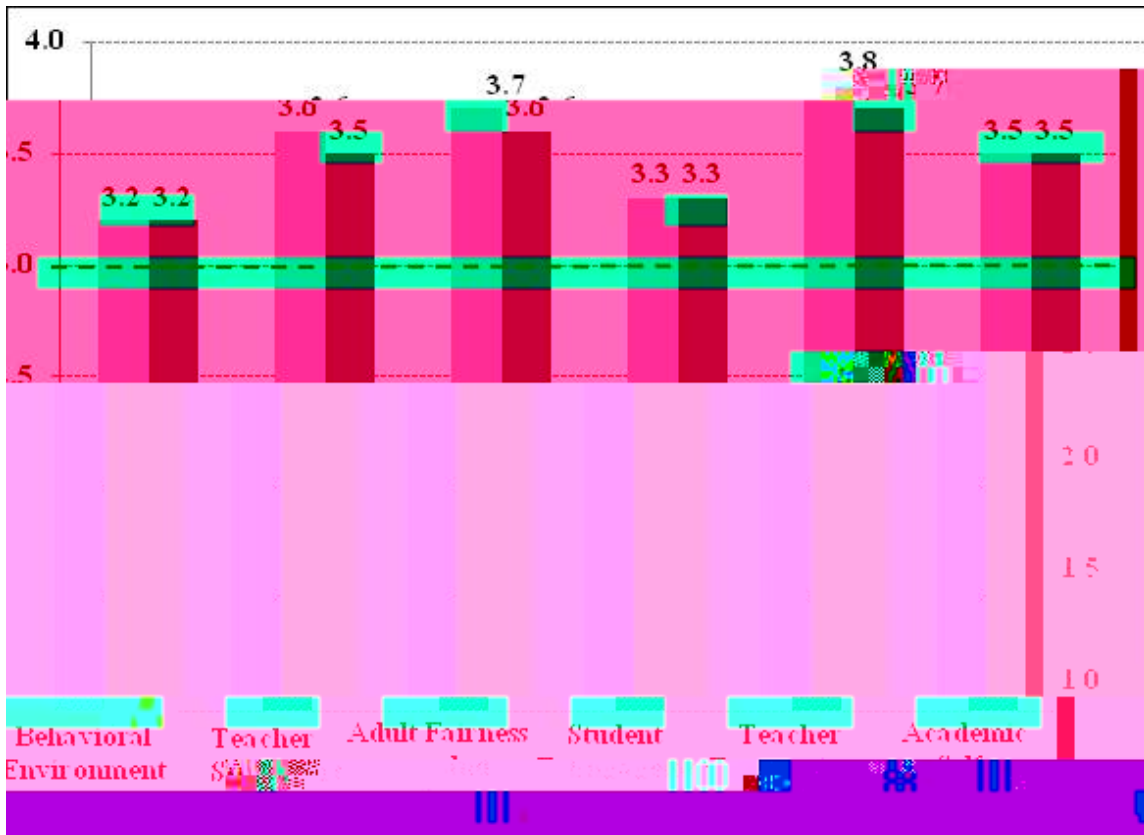
Table 1. Response Rate by Grade, 2009-2010

Galindo		
Grade	Population	Response Rate
3rd	102	80%
4th	102	88%
5th	113	91%
6th	n/a	n/a
Total	317	87%

Survey results for Galindo for the 2009-2010 school year are presented on the next page. Please note the green and red text boxes that highlight specific areas in which Galindo excels, as well as areas in which Galindo can improve. The appendix provides more detailed information regarding Galindo's student climate survey results from 2007-2008 through 2009-2010. Please review the individual items on each subscale with particular attention to how Galindo's average ratings have changed or remained consistent over time. Please note that some subscales have changed from previous years, making longitudinal comparisons inappropriate for some items and subscales. For items and subscales where longitudinal data are available, statistically meaningful changes are flagged with + or - symbols. Please share the results of this report with all campus staff and your Campus Advisory Council to inform campus improvement planning.

The graph below depicts Galindo’s average student climate survey ratings, compared with average ratings for students across all Elementary Schools in 2009-2010. Scores over 3.0 are desirable, as indicated by the red dashed line. The first step in improving these characteristics is to examine the item-level scores for each area (see Appendix).

Student Climate Survey Subscales for Galindo and all Elementary Schools, 2009-2010



Note. The light purple bars represent 2009-2010 data for Galindo and the dark purple bars represent 2009-2010 data for all Elementary Schools.

Galindo’s highest subscale score on the 2009-2010 Student Climate Survey was for Teacher Expectations, a new subscale in 2009-2010 that measures the expectations students perceive from their teachers. It is believed that Teacher Expectations are associated with academic achievement. Please think about what your school does to foster high expectations, and share your strategies with others.

Galindo’s lowest subscale score on the 2009-2010 Student Climate survey was for Behavioral Environment, which measures the extent to which students report feeling safe and respected at Galindo. Higher ratings of Behavioral Environment have been associated with academic achievement. For resources on how to improve your campus’ Behavioral Environment, please visit AISD’s Positive Behavior Support (PBS) website: <http://www.austinisd.org/academics/sss/pbs/index.phtml>

APPENDIX

Behavioral Environment	Galindo			All Elementary Schools
	2007-08	2008-09	2009-10	
1. My classmates show respect to each other.	3.0	3.1	3.0	3.0
2. My classmates show respect to other students who are different.	3.2	3.3	3.4	3.1
3. I am happy with the way my classmates treat me.	3.3	3.2	3.1	3.1
14. Students at my school follow the school rules.	2.9	3.0	2.8	2.8
15. I feel safe at my school.	3.6	3.6	3.5	3.5
16. I feel safe on the school property.	3.6	3.6	3.5	3.5
Behavioral Environment average	3.3	3.3	3.2	3.2

Note: Response options range from 1 (strongly disagree) to 4 (strongly agree). It is desirable to have a response of at least 3.0.

Teacher Support	Galindo			All Elementary Schools
	2007-08	2008-09	2009-10	
4. Teachers at this school care about their students.	3.9	3.9	3.8	3.9
17. Teachers give rewards or praise for good behavior.	3.4	3.3	3.4	3.3
28. Teachers give rewards or praise for good work.	3.4	3.3	3.4	3.2
32. My teachers care about how I do in school.	3.9	3.9	3.8	3.8
34. Teachers help students with personal problems.	3.5	3.6	3.6	3.5
Teacher Support average	3.6	3.6	3.6	3.5

Note: Response options range from 1 (strongly disagree) to 4 (strongly agree). It is desirable to have a response of at least 3.0.

	Galindo 2009-10	All Elementary Schools
9. I like to come to school.		3.2
21. I enjoy doing my schoolwork.		3.1
30. My homework helps me learn things I need to know.		3.5
33. My schoolwork makes me think about things in new ways.		3.3
		3.3
		3.3
		3.3

APPENDIX

Teacher Expectations	Galindo			All Elementary Schools
	2007-08	2008-09	2009-10	
13. My teachers believe I can learn.	n/a	n/a	3.7	3.7
18. My teachers expect me to do my best work.	4.0	4.0	4.0	3.9
19. My teachers challenge me to do better.	3.8	3.7	3.7	3.6
24. My teachers believe I can do well in school.	n/a	n/a	3.7	3.7
27. My teachers show me how to know if my work is good.	3.8	3.8	3.7	3.6
Teacher Expectations average	n/a	n/a	3.8	3.7

Note: Response options range from 1 (strongly disagree) to 4 (strongly agree). It is desirable to have a response of at least 3.0. With the addition of items 13 and 24 in 2009-2010, subscale comparisons across years are no longer possible.

Academic Self-Confidence	Galindo			All Elementary Schools
	2007-08	2008-09	2009-10	
20. I can do even the hardest work if I try.	3.6	3.5	3.5	3.5
22. I feel/felt well prepared for TAKS.	3.6	3.5	3.5	3.5
23. I try hard to do my best work.	3.8	3.7	3.7	3.8
26. I feel successful in my schoolwork.	3.6	3.5	3.3 -	3.4
29. I can reach the goals I set for myself.	3.5	3.5	3.4	3.5
31. I know how I am doing in school.	3.5	3.4	3.4	3.4
Academic Self-Confidence average	3.6	3.5 -	3.5	3.5

Note: Response options range from 1 (strongly disagree) to 4 (strongly agree). It is desirable to have a response of at least 3.0.

Additional Climate Items	Galindo			All Elementary Schools
	2007-08	2008-09	2009-10	
8. There is at least one adult at my school who I would go to if I have a problem.	3.6	3.5	3.5	3.5
25. My teachers like to teach.	3.9	3.9	3.8 -	3.8

Note: Response options range from 1 (strongly disagree) to 4 (strongly agree). It is desirable to have a response of at least 3.0.

REFERENCES

Schmitt, L., & Carney, D. (2008). *Austin ISD Board Level Reports*. Austin, TX: Austin Independent School District.

Austin Independent School District

Superintendent of Schools

Meria Carstarphen, Ed.D.

Office of Accountability

William Caritj, M.Ed.

Department of Program Evaluation

Holly Williams, Ph.D.

Authors

Lindsay M. Lamb, Ph.D.

Lisa N. T. Schmitt, Ph.D.

**Board of Trustees**

Mark Williams, President

Vincent Torres, M.S., Vice President

Lori Moya, Secretary

Cheryl Bradley

Annette LoVoi, M.A.

Christine Brister

Robert Schneider

Tamala Barksdale

Sam Guzman