



## 2005-2006 AISD Parent Survey Results

### Galindo Elementary School

The following report contains the results of the 2005-2006 AISD Parent Survey opportunities for improvement. Responses from Galindo Elementary School and other schools at your level and results for your campus from 2004-2005 are presented.

**How many parents responded to the survey in 2004-2005 and 2005-2006, and how does this compare to the number of students in the population each year?**

	Campus	District EL	District MS	District HS
	166			
	760			
	<b>21.8%</b>			
	114			
	800			
	<b>14.2%</b>			

Note: The ratio of parent respondents to students is listed above as a percentage for ease of interpretation; however, it is the number of parents who responded per 100 students enrolled.

**What did parents report as their child's ethnicity, and how does this compare to the ethnic distribution of the student population?**

Ethnicity	% of Students, as Reported by Campus Parent Respondents	% of Students in Campus Population
	4.2%	
Asian	0.0%	0.3%
Hispanic	81.3%	86.0%
Native American	3.1%	0.4%
White	11.5%	8.0%

**What did parents report as their child's grade, and how does this compare to the grade level distribution of the student population?**

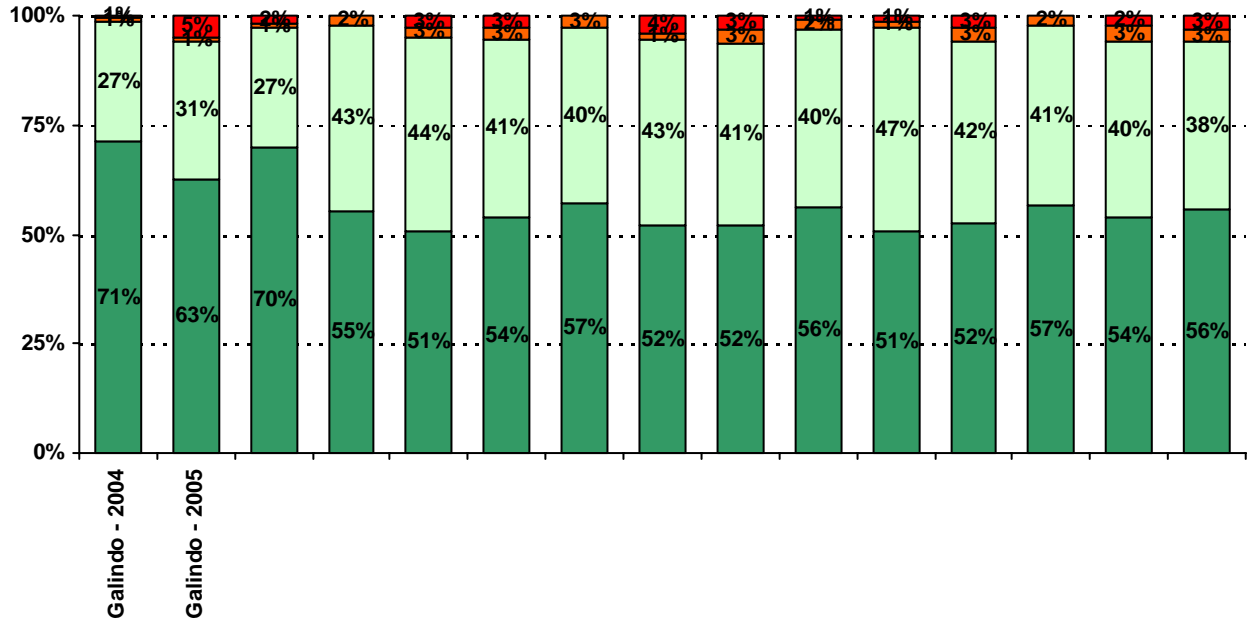
<b>Grade</b>	<b>% of Students, as Reported by Campus Parent Respondents</b>	<b>% of Students in Campus Population</b>
<b>EC</b>	0.0%	1.4%
<b>PK</b>	0.0%	12.4%
<b>K</b>	1.3%	16.4%
<b>1st</b>	22.1%	16.1%
<b>2nd</b>	16.9%	12.0%
<b>3rd</b>	26.0%	14.5%
<b>4th</b>	15.6%	13.5%
<b>5th</b>	18.2%	13.8%
<b>6th</b>	N/A	N/A

Note: Student population data are based on Fall PEIMS data submitted by the district to TEA, and may differ from the official AEIS report.

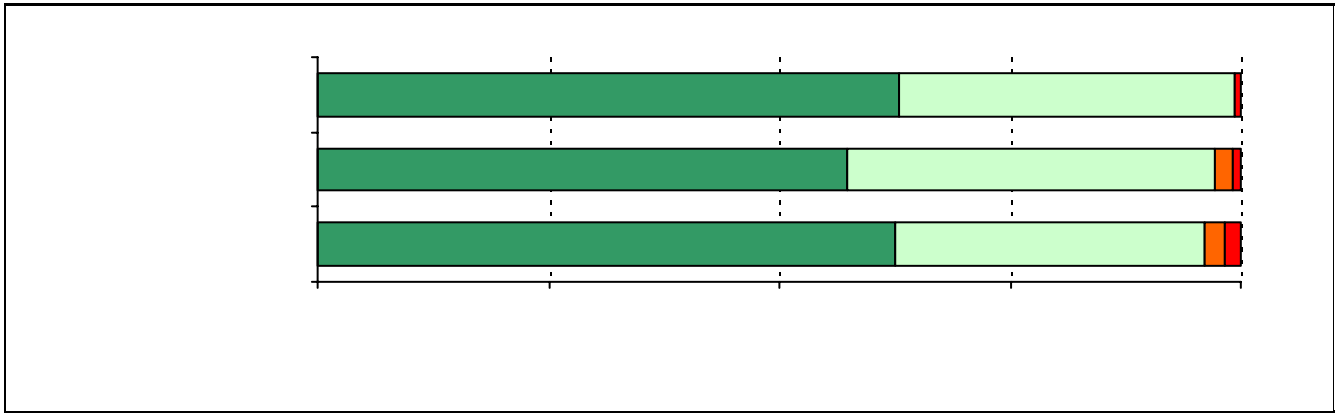
**USING THE RESULTS OF THE AISD PARENT SURVEY**

Each survey item is presented below, followed by a bar graph containing your school's results for two years and this year's results for all campuses at your level. You will be able to identify areas in which your school's results have changed over time, and you will be able to compare the responses of your school's parents to those of parents at your level district-wide.

5. The following school staff provide me with opportunities for two-way communication.





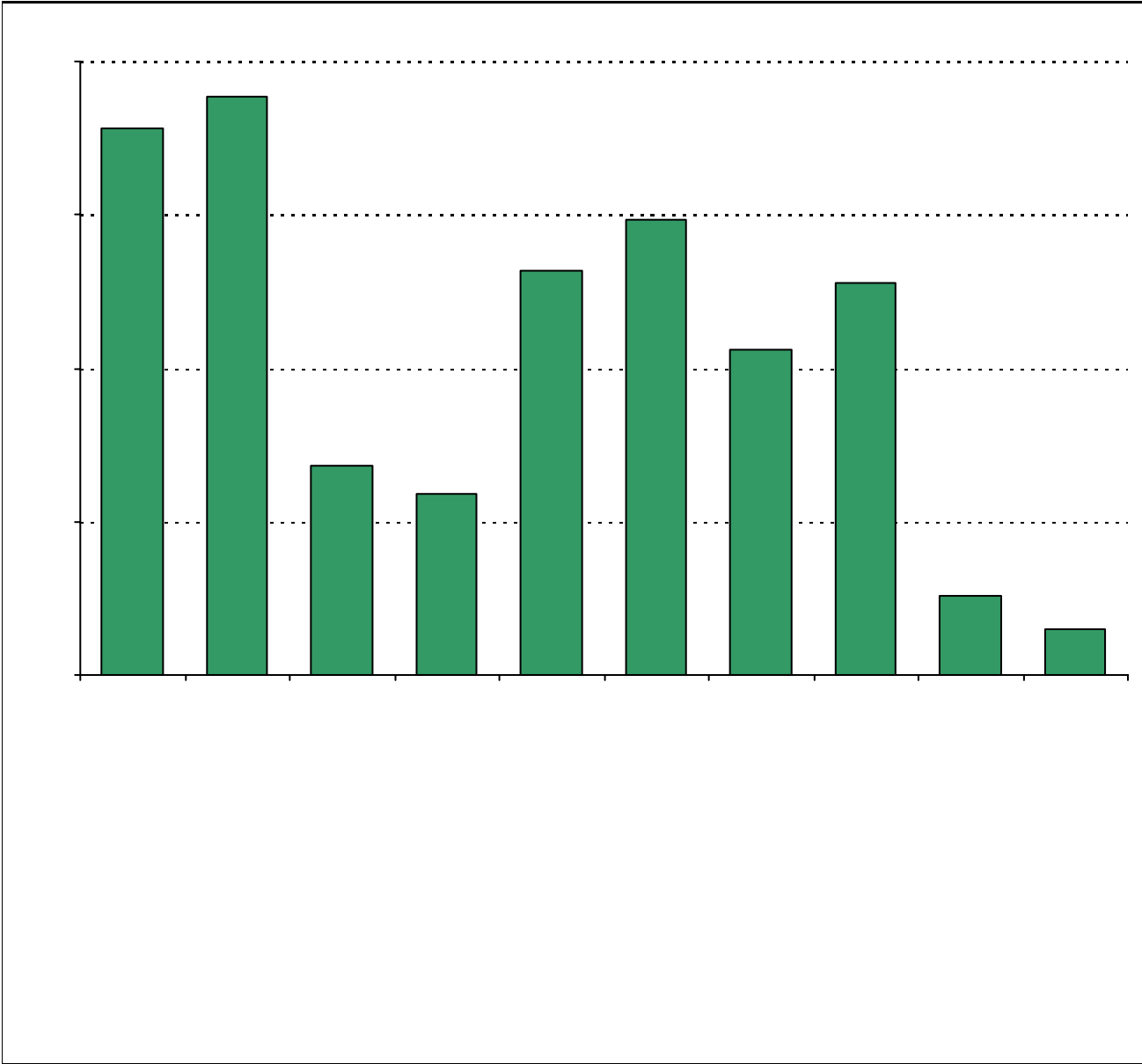


.....



**Required**





## Item Response Details

Number of Galindo Elementary School Parent Responses, by Response Option

		Strongly Agree	Agree	Disagree	Strongly Disagree	Don't Know/NA
<b>4a.</b>	<b>n = 101</b>	50	36	1	0	14
<b>4b.</b>	<b>n = 98</b>	47	34	1	0	16
<b>4c.</b>	<b>n = 98</b>	44	30	0	1	23
<b>4d.</b>	<b>n = 101</b>	50	42	1	1	7
<b>4e.</b>	<b>n = 109</b>	72	31	0	3	3
<b>5a.</b>	<b>n = 101</b>	47	35	3	2	14
<b>5b.</b>	<b>n = 97</b>	39	36	1	1	20
<b>5c.</b>	<b>n = 97</b>	39	32	1	3	22
<b>5d.</b>	<b>n = 100</b>	40	35	2	2	21
<b>5e.</b>	<b>n = 108</b>	64	32	1	5	6
<b>6a.</b>	<b>n = 94</b>	41	31	2	1	19
<b>6b.</b>	<b>n = 91</b>	37	31	1	1	21
<b>6c.</b>	<b>n = 92</b>	38	26	2	1	25
<b>6d.</b>	<b>n = 93</b>	37	30	3	1	22
<b>6e.</b>	<b>n = 109</b>	63	34	2	3	7
<b>7a.</b>	<b>n = 95</b>	35	39	0	1	20
<b>7b.</b>	<b>n = 94</b>	33	38	0	1	22
<b>7c.</b>	<b>n = 93</b>	33	37	0	1	22
<b>7d.</b>	<b>n = 93</b>	33	33	1	1	25
<b>7e.</b>	<b>n = 107</b>	54	41	0	3	9
<b>8a.</b>	<b>n = 100</b>	55	32	1	1	11
<b>8b.</b>	<b>n = 94</b>	52	30	0	1	11
<b>8c.</b>	<b>n = 93</b>	52	26	0	2	13
<b>8d.</b>	<b>n = 94</b>	50	34	2	0	8
<b>8e.</b>	<b>n = 102</b>	60	34	1	2	5
<b>8f.</b>	<b>n = 96</b>	51	32	2	1	1
<b>9.</b>	<b>n = 111</b>	62	43	2	1	3
<b>10.</b>	<b>n = 107</b>	54	41	4	1	7

Number of Galindo Elementary School Parent Responses, by Response Option  
(Continued)

		Strongly Agree	Agree	Disagree	Strongly Disagree	Don't Know/NA
<b>11a.</b>	<b>n = 101</b>	50	40	3	3	5
<b>11b.</b>	<b>n = 102</b>	52	43	3	1	3
<b>11c.</b>	<b>n = 98</b>	46	42	3	2	5
<b>11d.</b>	<b>n = 100</b>	49	42	3	2	4
<b>11e.</b>	<b>n = 97</b>	47	37	5	3	5
<b>11f.</b>	<b>n = 98</b>	52	38	3	2	3
<b>11g.</b>	<b>n = 99</b>	51	39	1	4	4
<b>11h.</b>	<b>n = 93</b>	47	33	6	3	4
<b>11i.</b>	<b>n = 94</b>	39	30	3	3	19
<b>12a.</b>	<b>n = 101</b>	39	35	7	3	17
<b>12b.</b>	<b>n = 98</b>	37	31	8	4	18
<b>12c.</b>	<b>n = 93</b>	40	30	9	3	11
<b>12d.</b>	<b>n = 101</b>	41	33	3	5	17
<b>12e.</b>	<b>n = 105</b>	51	42	2	2	8
<b>12f.</b>	<b>n = 99</b>	45	37	6	4	7
<b>13a.</b>	<b>n = 108</b>	55	42	3	3	5
<b>13b.</b>	<b>n = 101</b>	48	39	4	4	6
<b>13c.</b>	<b>n = 99</b>	46	39	3	3	8
<b>13d.</b>	<b>n = 95</b>	44	33	4	5	9
<b>13e.</b>	<b>n = 102</b>	56	36	4	3	3
<b>14.</b>	<b>n = 100</b>	<p><i>Item 14 did not use the "Strongly Agree" to "Strongly Disagree" scale. Numbers below reflect the number of parents selecting each goal. These numbers will not sum to the total number of item respondents because parents may select multiple goals.</i></p>				
		<b>High School diploma</b>	<b>Certificate/ Associates degree</b>	<b>Bachelors degree</b>	<b>Graduate/ Professional degree</b>	<b>Military service</b>
		89	34	66	53	13