



How many parents responded to the survey in 2004-2005 and 2005-2006, and how does this compare to the number of students in the population each year?

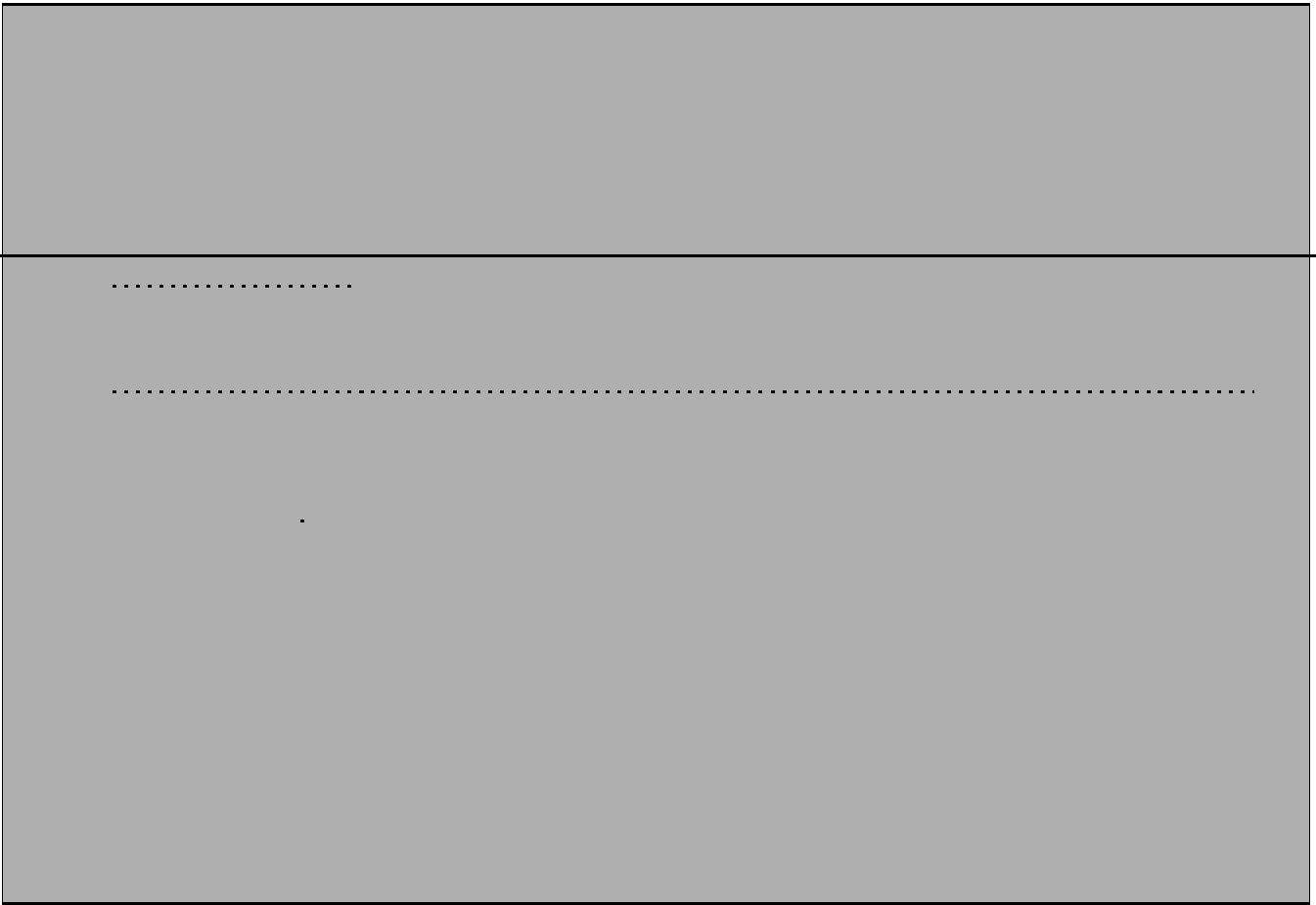
	Campus	District EL	District MS	District HS
# of Parents Responding in 2004-2005				
# of Students in 2004-2005				
<i>Ratio of Parent Respondents to Students, 2004-2005</i>	<i>25.9%</i>	<i>27.8%</i>	<i>12.8%</i>	<i>13.5%</i>
# of Parents Responding in 2005-2006				
# of Students in 2005-2006				
<i>Ratio of Parent Respondents to Students, 2005-2006</i>	<i>19.2%</i>	<i>24.3%</i>	<i>11.5%</i>	<i>10.4%</i>

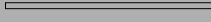
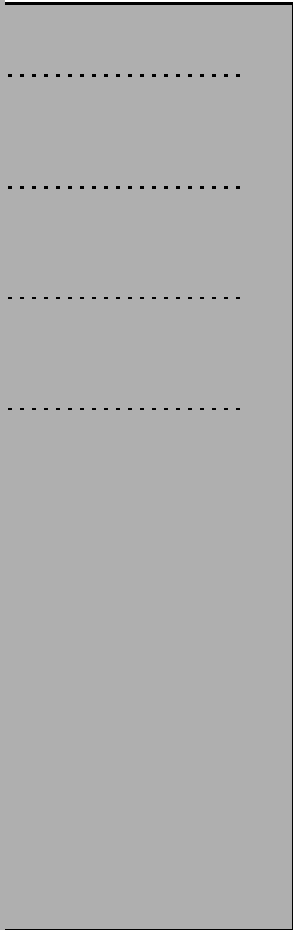
What did parents report as their child's ethnicity, and how does this compare to the ethnic distribution of the student population?

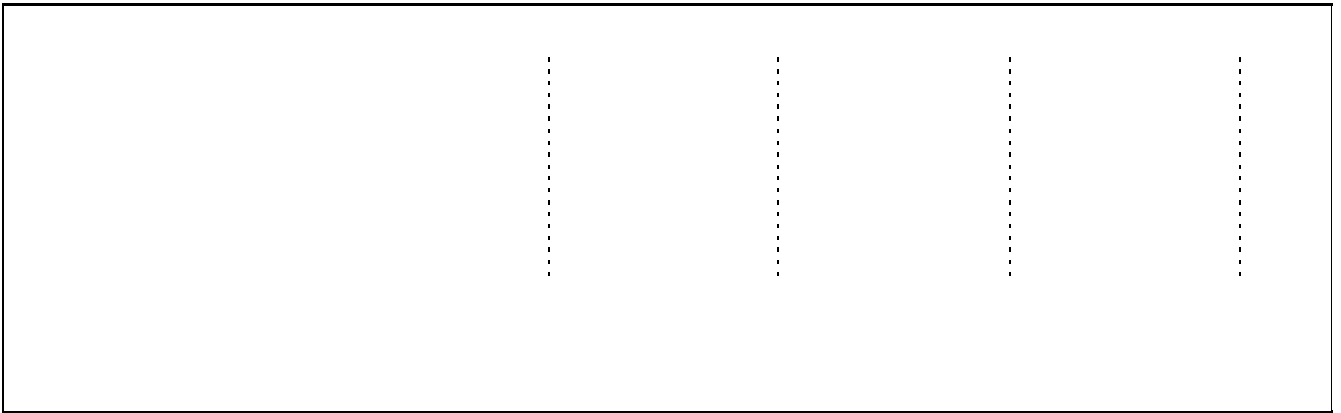
Ethnicity	% of Students, as Reported by Campus Parent Respondents	% of Students in Campus Population
African American		
Asian		
Hispanic		
Native American		
White		

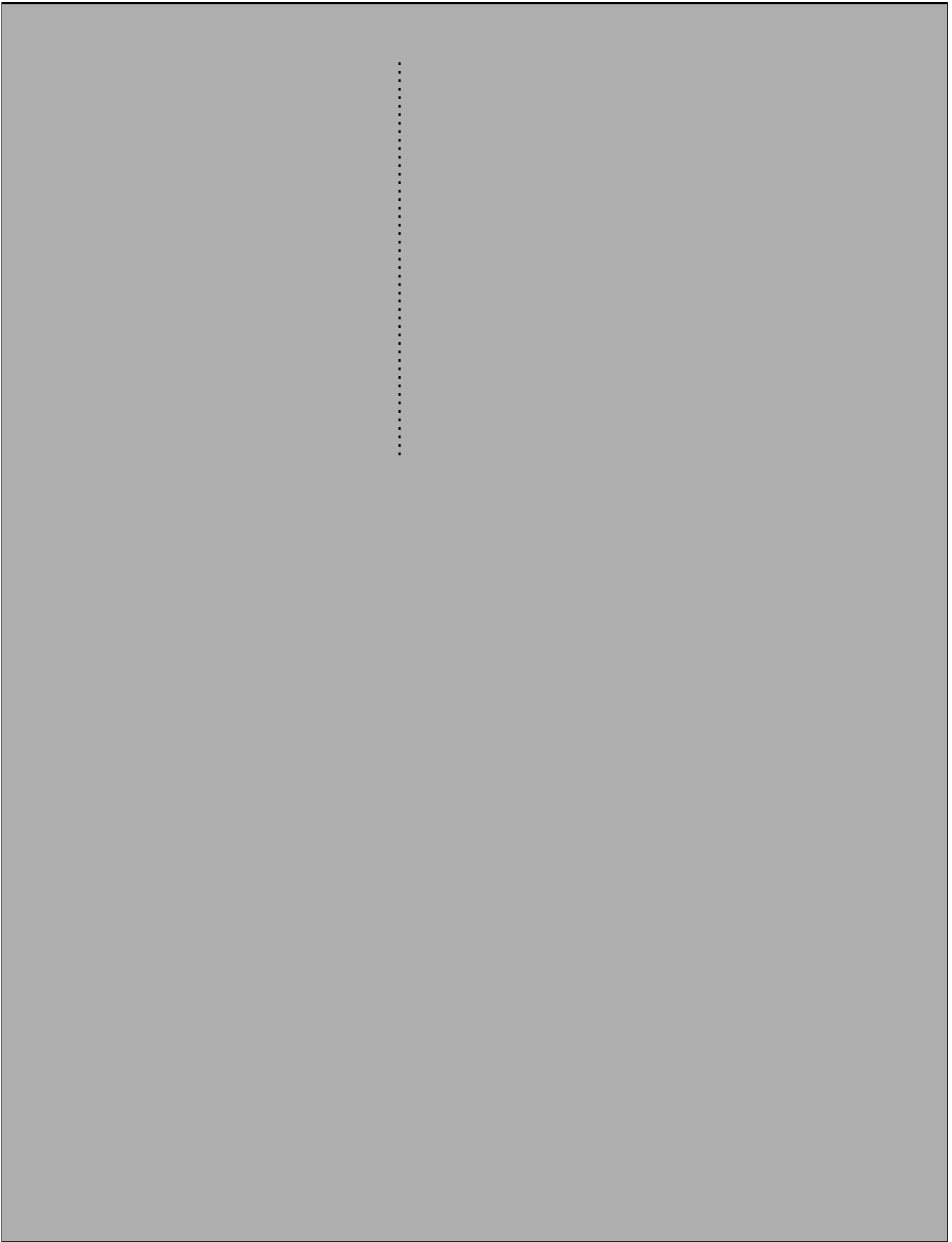
Grade	% of Students, as Reported by Campus Parent Respondents	% of Students in Campus Population
EC		
PK		
K		

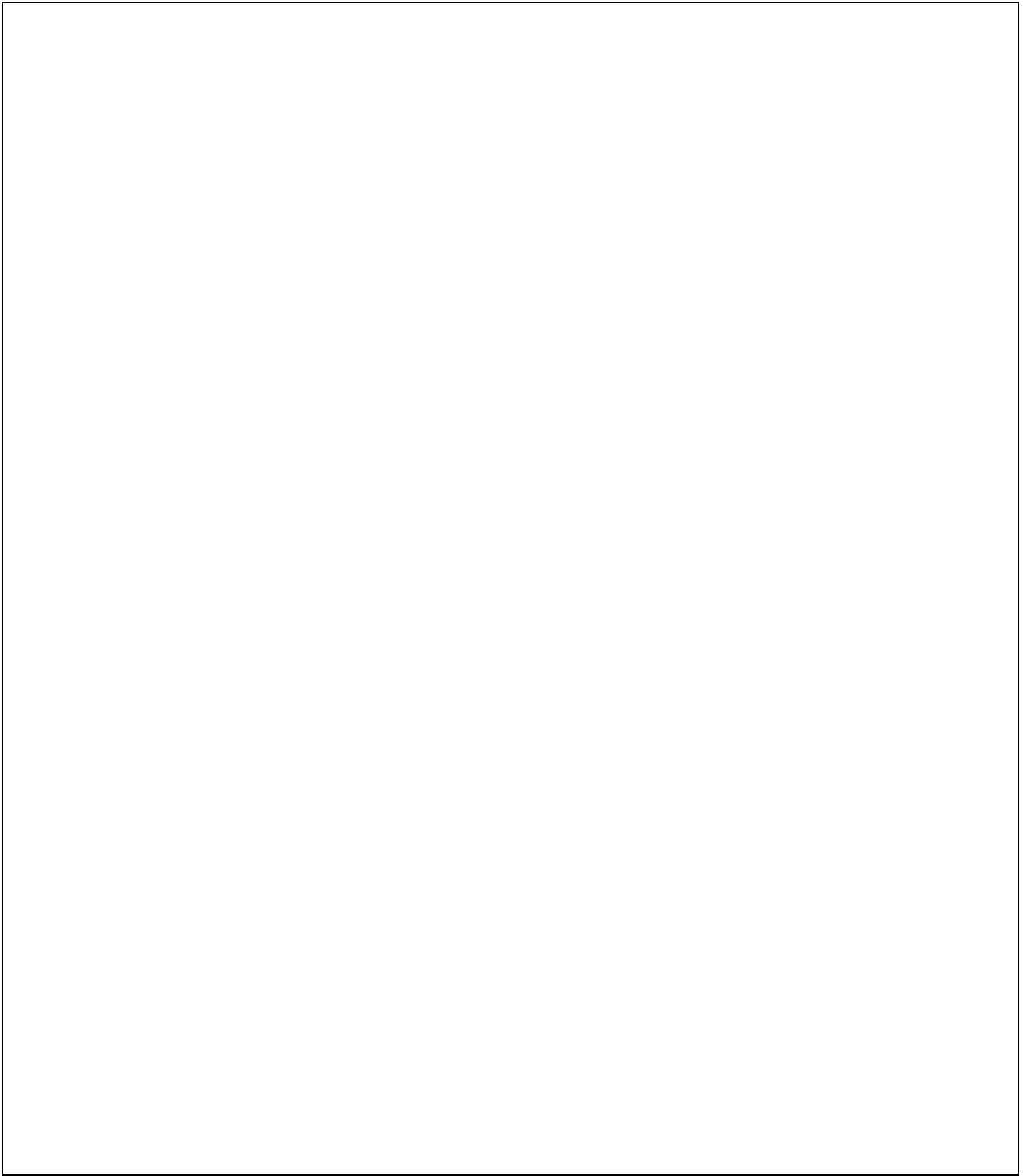
USING THE RESULTS OF THE AISD PARENT SURVEY





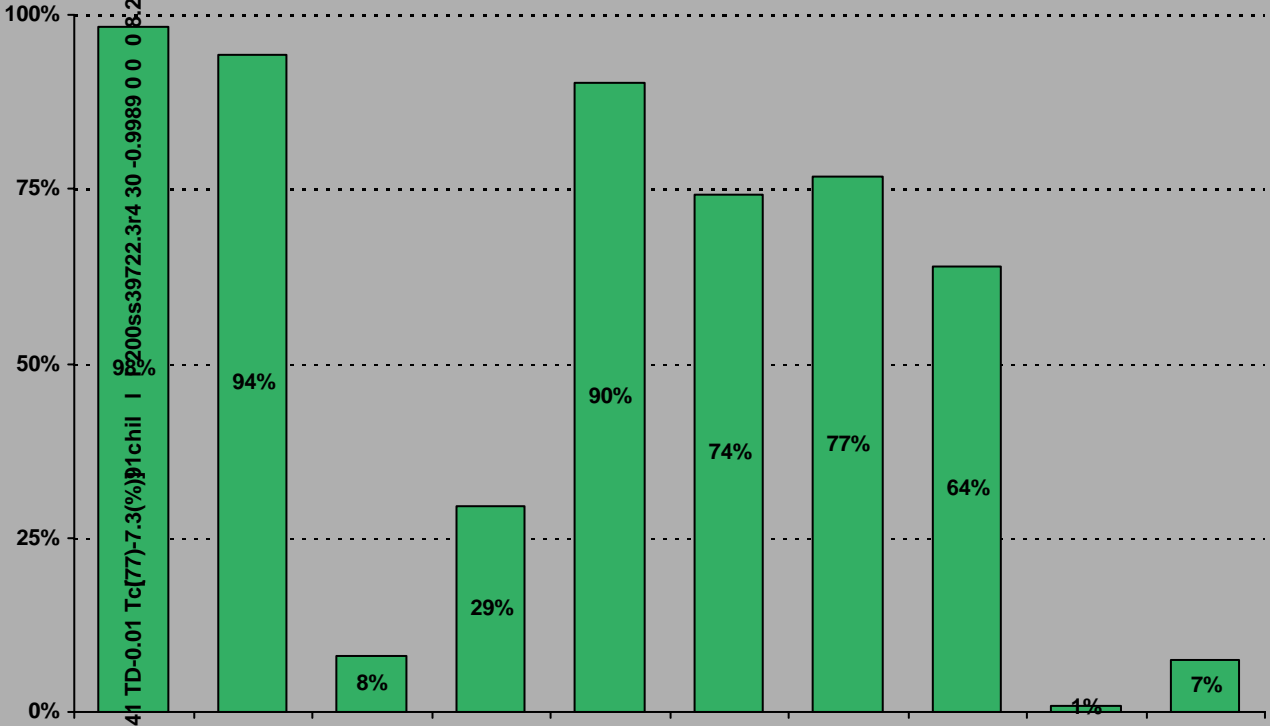






Required

14. My goals for my child include the following plans*:



Doss - 20054 | TD-0.01 Tc(77)-7.3(%) | P200ss39722.3r4 30 -0.9989 0 0 8.2392 30 -0.9989 0

Item Response Details

		Strongly Agree	Agree	Disagree	Strongly Disagree	Don't Know/NA
4a.	n = 116					
4b.	n = 114					
4c.	n = 114					
4d.	n = 115					
4e.	n = 116					
5a.	n = 114					
5b.	n = 112					
5c.	n = 111					
5d.	n = 113					
5e.	n = 116					
6a.	n = 108					
6b.	n = 109					
6c.	n = 108					
6d.	n = 109					
6e.	n = 117					
7a.	n = 104					
7b.	n = 104					
7c.	n = 105					
7d.	n = 105					
7e.	n = 113					
8a.	n = 112					
8b.	n = 112					
8c.	n = 112					
8d.	n = 112					
8e.	n = 115					
8f.	n = 113					
9.	n = 115					
10.	n = 114					

		Strongly Agree	Agree	Disagree	Strongly Disagree	Don't Know/NA
11a.	n = 113					
11b.	n = 114					
11c.	n = 113					
11d.	n = 113					
11e.	n = 114					
11f.	n = 112					
11g.	n = 112					
11h.	n = 110					
11i.	n = 111					
12a.	n = 109					
12b.	n = 110					
12c.	n = 110					
12d.	n = 109					
12e.	n = 113					
12f.	n = 106					
13a.	n = 113					
13b.	n = 112					
13c.	n = 111					
13d.	n = 110					
13e.	n = 111					
14.	n = 112	<p><i>Item 14 did not use the "Strongly Agree" to "Strongly Disagree" scale. Numbers below reflect the number of parents selecting each goal. These numbers will not sum to the total number of item respondents because parents may select multiple goals.</i></p>				
		High School diploma	Certificate/ Associates degree	Bachelors degree	Graduate/ Professional degree	Military service