

Austin Independent School District

Department of Program Evaluation

Publication Number 07.87
February 2009

Marshall W. Garland, M.A.
Cinda Christian, Ph.D.
Reetu Naik, M.A.

RESULTS OF THE 2008 STUDENT SUBSTANCE USE AND SAFETY SURVEY

DOBIE MIDDLE SCHOOL

Description of Survey

The federal Title IV Safe and Drug Free Schools and Communities grant requires annual needs assessment and evaluation of substance use and safety issues. Consequently, each year, a self-report student survey of substance use and school safety is administered to a random, representative sample of AISD students. The survey is used to track student knowledge, attitudes, and self-reported behavior over time. In the Spring of 2008 a sample of 8,436 students in grades 6-12 submitted valid responses to the district's annual survey of substance use and safety issues, yielding a response rate of 73%. Selected item results are attached. These results should be shared with your Positive Behavior Support (PBS) team, the Campus Advisory Council, and others involved in campus safety planning efforts for your school.

How should sample data be interpreted?

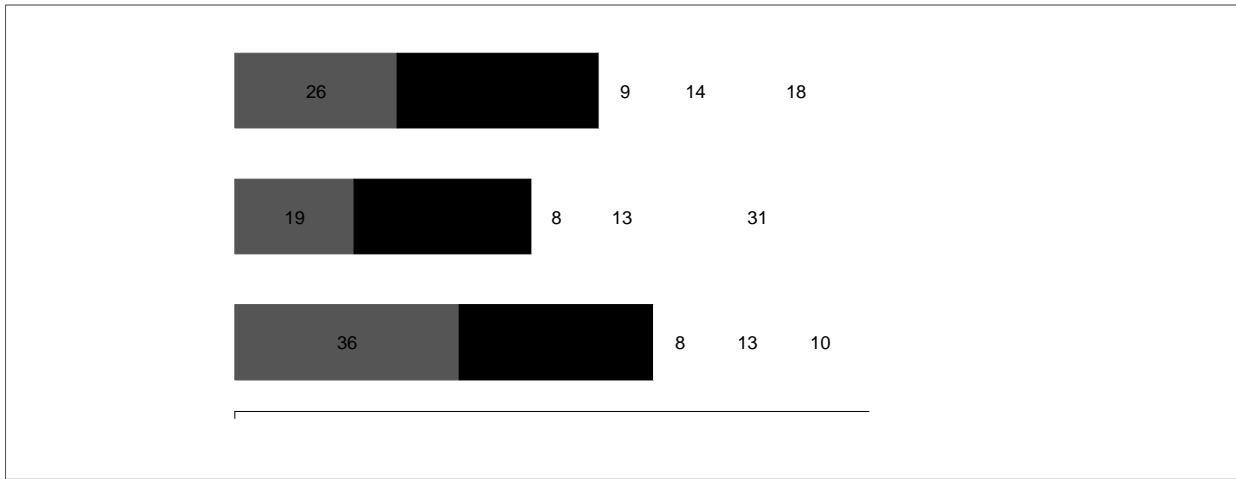
When it is not feasible to survey an entire population, samples are used instead. However, when a sample is used to make inferences about a population, the results must be interpreted with caution. For example, although 87% of a sample may select a particular response, this does not necessarily mean 87% of

Q48: During this school year, have you brought any of the following items to school?

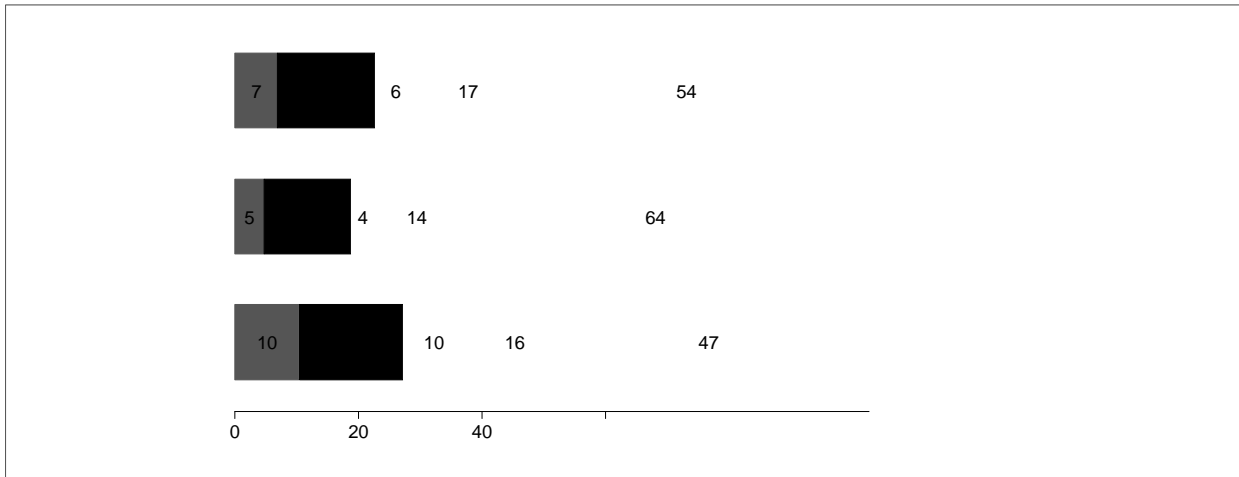
Dobie 2008	Percentage point change from 2007	All middle schools 2008
------------	--------------------------------------	----------------------------

SCHOOL SAFETY ITEMS

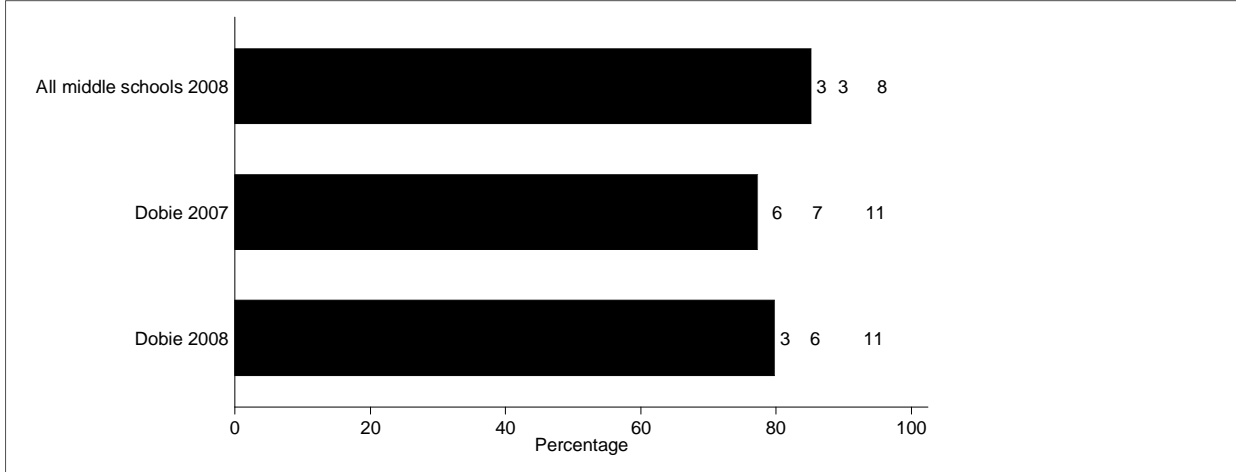
Q14: How often does racism occur at your school?



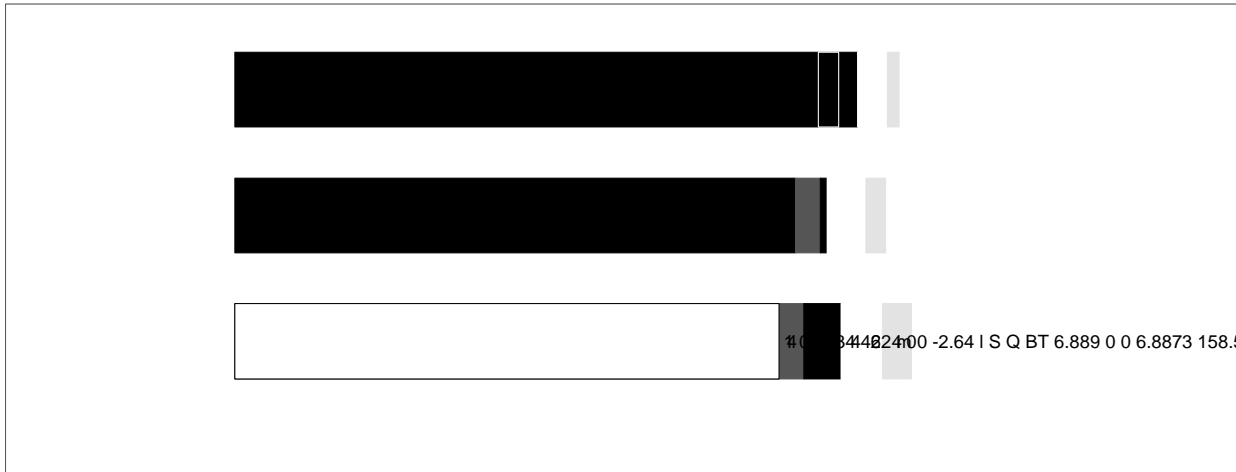
Q20: How often does your teacher have to interrupt class to deal with student misbehavior?



Q26: What is the most recent you have used Marijuana (e.g., pot, weed, joint, blunt, etc.)?

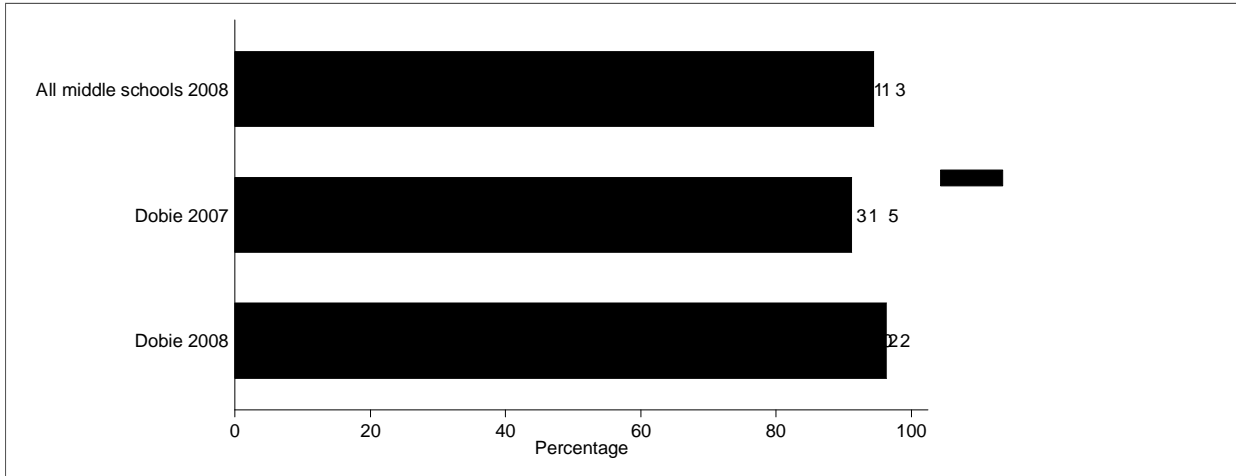


Q41: During this year, how often did you use Marijuana (e.g., pot, weed, joint, blunt, etc.)?

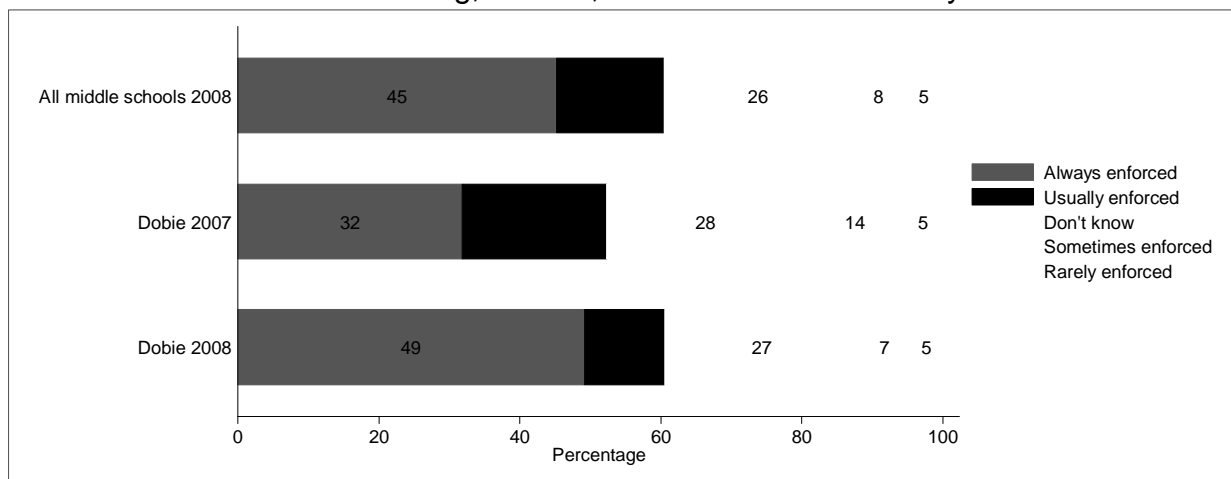


Q27:What is the most recent you have used Inhala

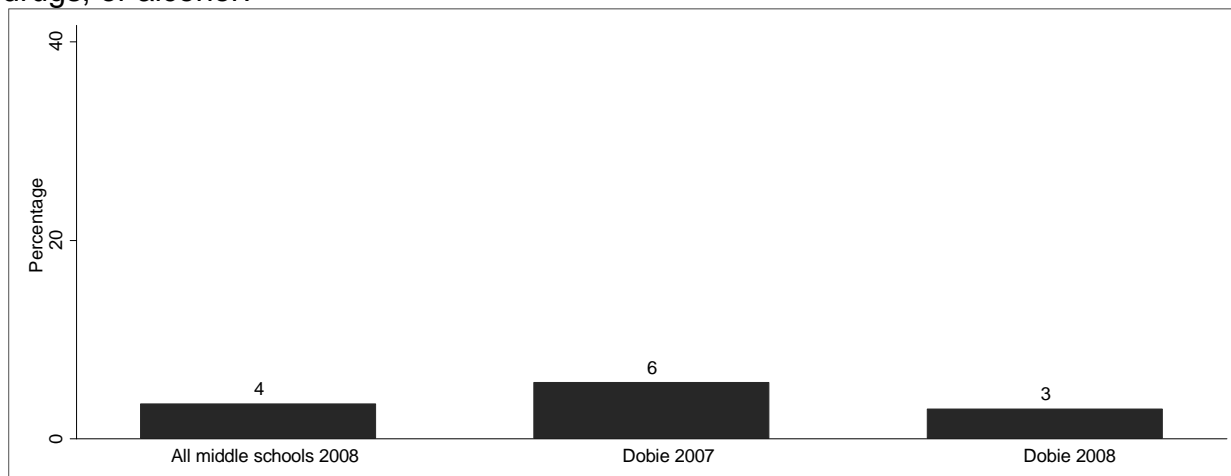
Q28: What is the most recent you have used Over Counter Medication (e.g., triple Cs, DXM, skittles, or Coricidin) to get high?



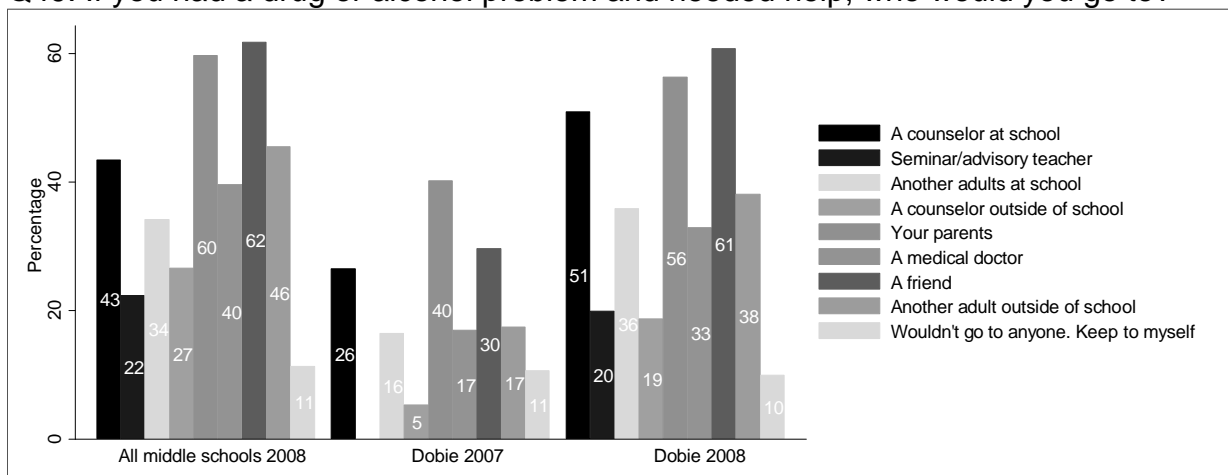
Q12: Are school rules about drug, alcohol, or tobacco use enforced by school staff?



Q37: During this school year, have you gotten in trouble with the police because of tobacco, drugs, or alcohol?

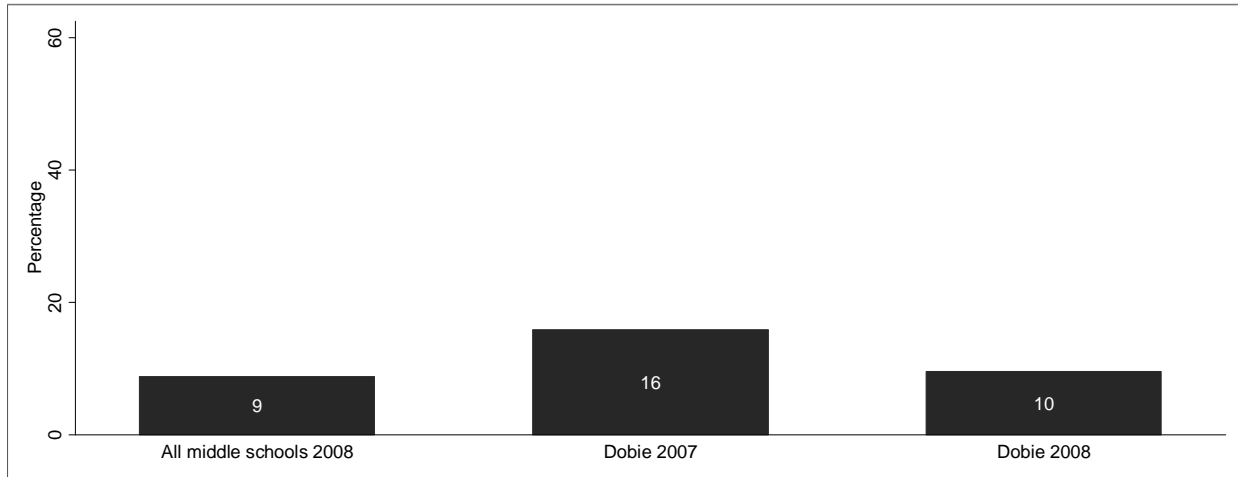


Q49: If you had a drug or alcohol problem and needed help, who would you go to?

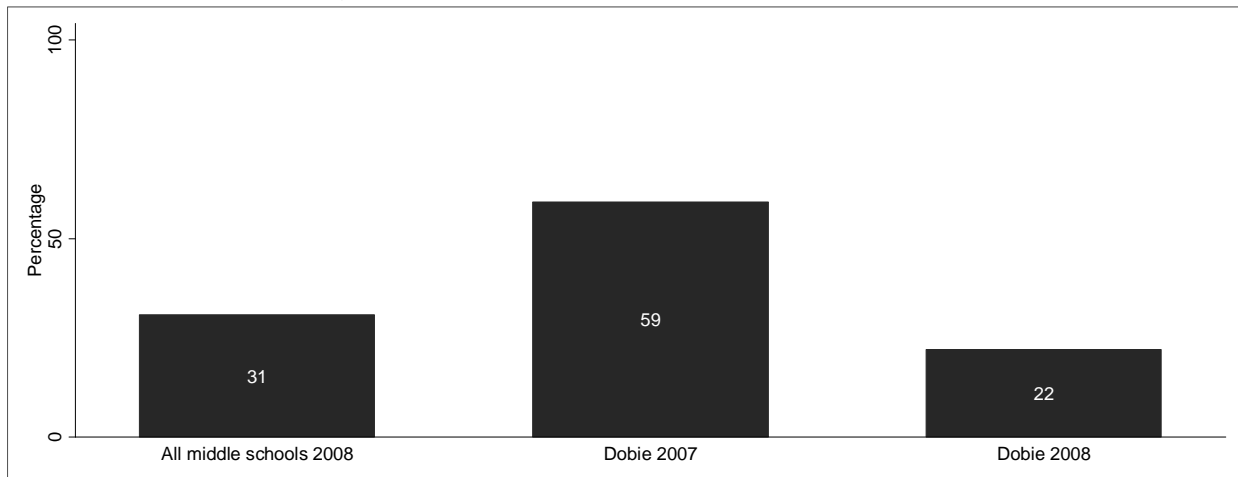


Note. Percentages may sum to more than 100% because respondents were allowed to choose multiple items. Differences between years should be interpreted with caution due to changes in the structure of the question between 2006-2007 and 2007-2008.

Q38: During this school year, have you attended any class while high, stoned, or drunk on any substance?



Q50: Within the past year, has your parent/guardian talked with you about the dangers of tobacco, alcohol, or drug use?



Note. This question was worded differently on the 2008 survey than it was on the 2007 survey. Specifically, the question asked: "Have you talked with at least one of your parents/guardians about the dangers of tobacco, alcohol, or drug use within the past year?"

AUSTIN INDEPENDENT SCHOOL DISTRICT

SUPERINTENDENT OF SCHOOLS

Pascal D. Forgione, Jr., Ph.D.

OFFICE OF ACCOUNTABILITY

Anne Ware, Ph.D.

DEPARTMENT OF PROGRAM EVALUATION

Holly Williams, Ph.D.

AUTHOR

Marshall Garland, M.A.

Cinda Christian, Ph.D.

Reetu Naik, M.A.

BOARD OF TRUSTEES

Mark Williams, President

Publication Number 07.87

February 2009