



## 2005-2006 AISD Parent Survey Results

The following report contains the results of the 2005-2006 AISD Parent Survey for your campus and all AISD schools at your level. The first section of this report provides a comparison of the campus demographics and the demographics reported by parents who responded to the survey from your campus. The next section describes the percentages of parents selecting specific responses for each survey item, and the final section indicates the actual number of parents who selected each response option. Campus survey results should be examined for areas of strength and opportunities for improvement. Results for all AISD schools at your level and results for your campus from 2004-2005 are presented to provide a reference for comparison.

### How many parents responded to the survey in 2004-2005 and 2005-2006, and how does this compare to the number of students in the population each year?

	Campus	District EL	District MS	District HS
<b># of Parents Responding in 2004-2005</b>	164	12,137	2,007	2,700
<b># of Students in 2004-2005</b>	593	43,566	15,705	19,976
<b>Ratio of Parent Respondents to Students, 2004-2005</b>	<b>27.7%</b>	<b>27.8%</b>	<b>12.8%</b>	<b>13.5%</b>
<b># of Parents Responding in 2005-2006</b>	99	10,900	1,801	2,085
<b># of Students in 2005-2006</b>	604	44,827	15,624	20,081
<b>Ratio of Parent Respondents to Students, 2005-2006</b>	<b>16.4%</b>	<b>24.3%</b>	<b>11.5%</b>	<b>10.4%</b>

Note: The ratio of parent respondents to students is listed above as a percentage.	Tuchman	4.8%	.9	13.1%	56.6%
	Native American			0.0%	0.2%
	White			51.7%	29.6%

### What did parents report as their child's ethnicity, and how does this compare to the ethnic distribution of the student population?

**African American** 11.1%

---

**What did parents report as their child's grade, and how does this compare to the grade level distribution of the student population?**

<b>Grade</b>	<b>% of Students, as Reported by Campus Parent Respondents</b>	<b>% of Students in Campus Population</b>
<b>EC</b>	0.0%	3.3%
<b>PK</b>	1.6%	8.4%
<b>K</b>	1.6%	14.2%
<b>1st</b>	27.4%	15.1%
<b>2nd</b>	19.4%	15.1%
<b>3rd</b>	19.4%	14.7%
<b>4th</b>	9.7%	13.7%
<b>5th</b>	21.0%	15.4%
<b>6th</b>	N/A	N/A

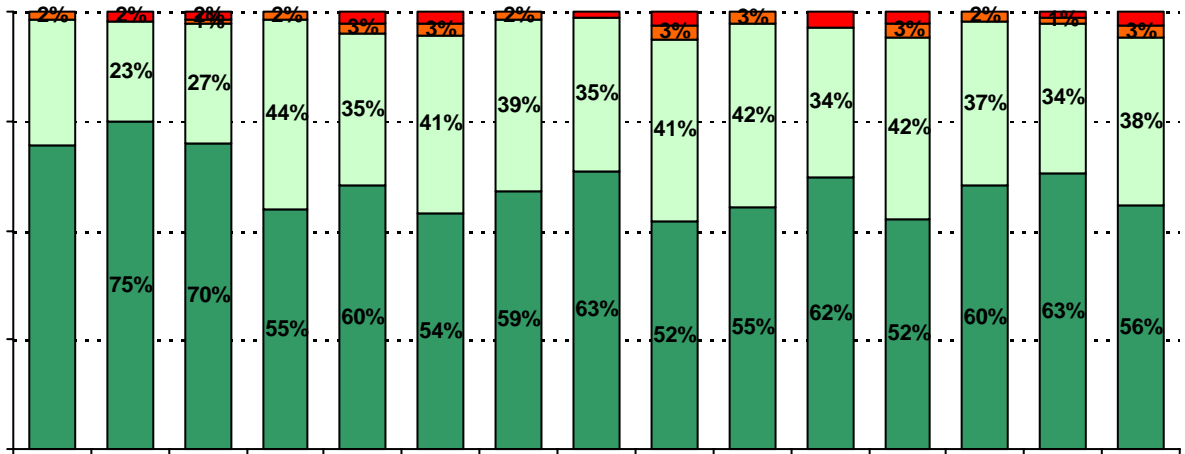
Note: Student population data are based on Fall PEIMS data submitted by the district to TEA, and may differ from the official AEIS report.

**USING THE RESULTS OF THE AISD PARENT SURVEY**

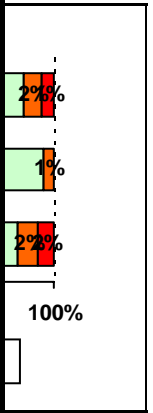
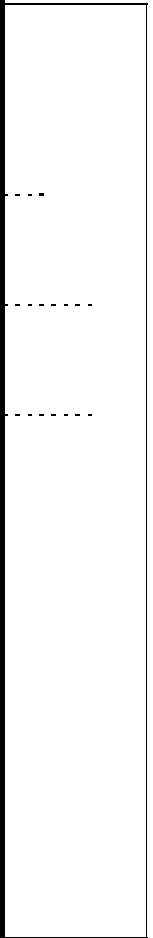
Each survey item is presented below, followed by a bar graph containing your school's results for

two years and this year as reported for all campus (ns) p. 17c5 (p. 15) (age 3-20) (submitted) 13.1 (507) 576903.mel89131

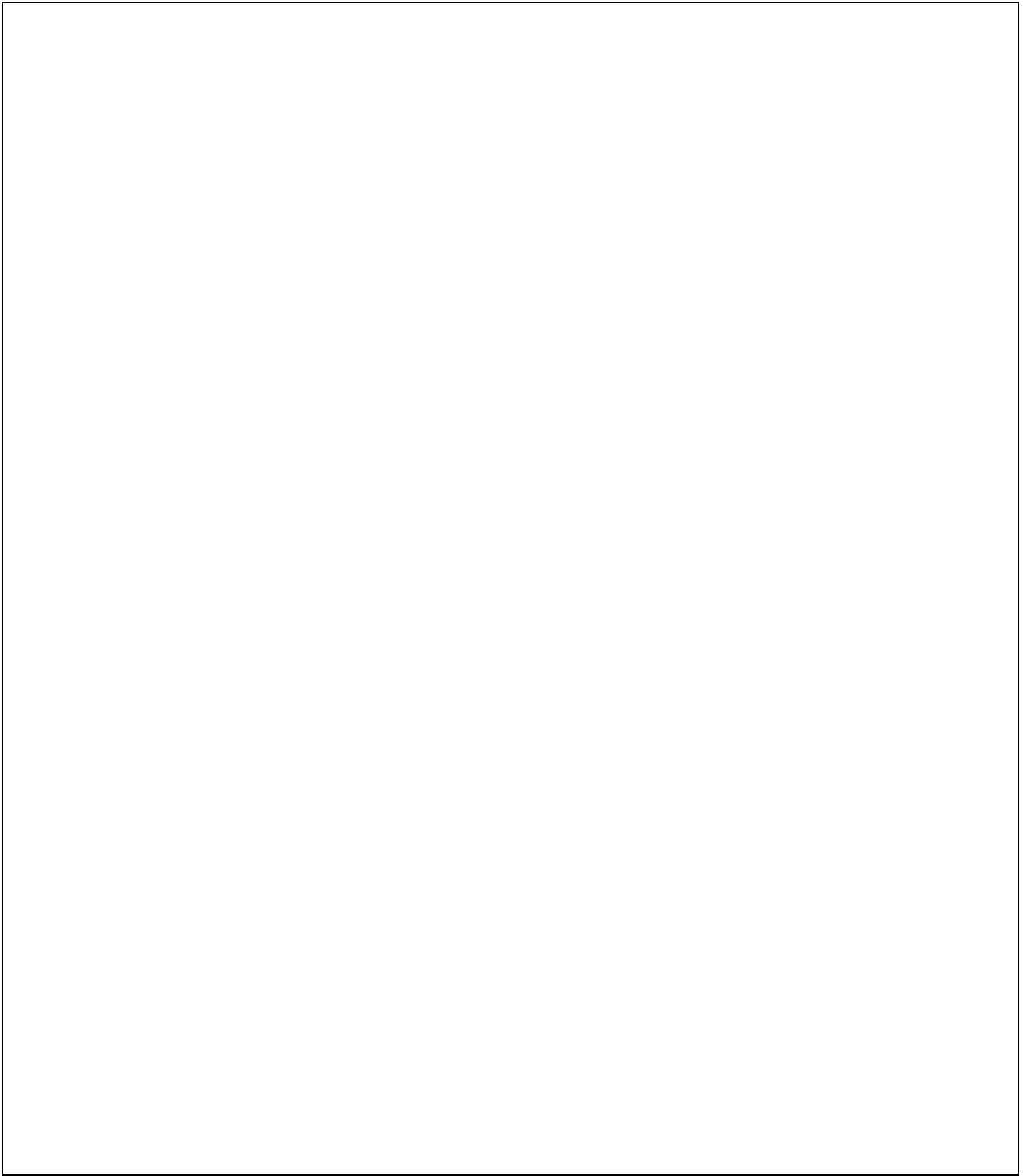
5. The following school staff provide me with opportunities for two-way communication.







.....



**Required**

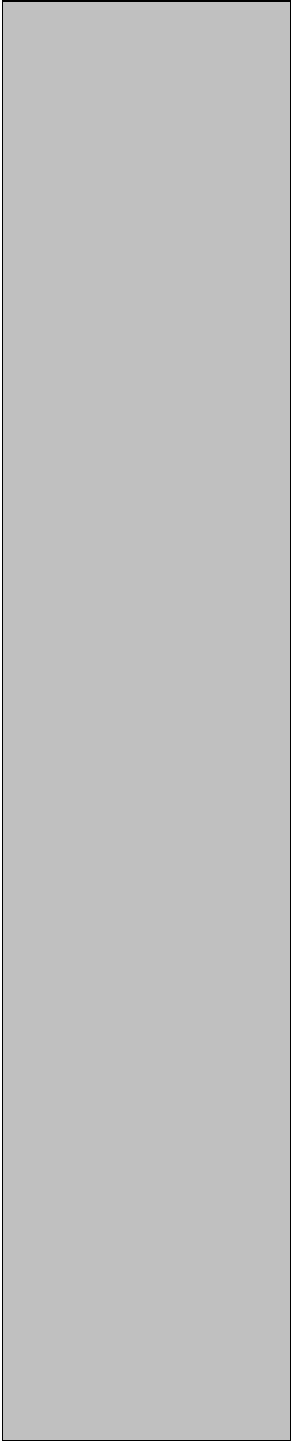


A rectangular box with a solid black border, containing four horizontal dotted lines spaced evenly down the page. This is a template for writing.

**Strongly Disagree**

**Disagree**

**Strongly  
Disagree**



Number of Cunningham Elementary School Parent Responses, by Response Option  
(Continued)

		Strongly Agree	Agree	Disagree	Strongly Disagree	Don't Know/NA
<b>11a.</b>	<b>n = 89</b>	50	33	1	0	5
<b>11b.</b>	<b>n = 88</b>	51	33	3	0	1
<b>11c.</b>	<b>n = 90</b>	48	37	1	0	4
<b>11d.</b>	<b>n = 91</b>	50	36	2	1	2
<b>11e.</b>	<b>n = 89</b>	51	34	1	0	3
<b>11f.</b>	<b>n = 90</b>	51	37	1	0	1
<b>11g.</b>	<b>n = 90</b>	48	37	1	0	4
<b>11h.</b>	<b>n = 91</b>	48	33	4	0	6
<b>11i.</b>	<b>n = 82</b>	37	25	1	0	19
<b>12a.</b>	<b>n = 87</b>	33	19	7	1	27
<b>12b.</b>	<b>n = 84</b>	25	19	9	1	30
<b>12c.</b>	<b>n = 87</b>	34	38	2	1	12
<b>12d.</b>	<b>n = 87</b>	34	22	9	1	20
<b>12e.</b>	<b>n = 88</b>	45	38	2	1	2
		30	29	12	1	15
<b>13a.</b>	<b>n = 90</b>	56	32	0	1	1
<b>13b.</b>	<b>n = 90</b>	42	29	7	2	10
<b>13c.</b>	<b>n = 88</b>	43	32	6	1	6
<b>13d.</b>	<b>n = 91</b>	37	31	6	1	16
		54	33	0	1	1