



## 2005-2006 AISD Parent Survey Results

### Cook Elementary School

The following report contains the results of the 2005-2006 AISD Parent Survey for your campus and all AISD schools at your level. The first section of this report provides a comparison of the campus demographics and the demographics reported by parents who responded to the survey from your campus. The next section describes the percentages of parents selecting specific responses for each survey item, and the final section indicates the actual number of parents who selected each response option. Campus survey results should be examined for areas of strength and opportunities for improvement. Results for all AISD schools at your level and results for your campus from 2004-2005 are presented to provide a reference for comparison.

#### How many parents responded to the survey in 2004-2005 and 2005-2006, and how does this compare to the number of students in the population each year?

	Campus	District EL	District MS	District HS
<b># of Parents Responding in 2004-2005</b>	235	12,137	2,007	2,700
<b># of Students in 2004-2005</b>	897	43,566	15,705	19,976
<b>Ratio of Parent Respondents to Students, 2004-2005</b>	<b>26.2%</b>	<b>27.8%</b>	<b>12.8%</b>	<b>13.5%</b>
<b># of Parents Responding in 2005-2006</b>	180	10,900	1,801	2,085
<b># of Students in 2005-2006</b>	949	44,827	15,624	20,081
<b>Ratio of Parent Respondents to Students, 2005-2006</b>	<b>19%</b>	<b>24.3%</b>	<b>11.5%</b>	<b>10.4%</b>

Note: The ratio of parent respondents to students is listed above as a percentage for ease of interpretation; however, it is the number of parents who responded per 100 students enrolled.

#### What did parents report as their child's ethnicity, and how does this compare to the ethnic distribution of the student population?

Ethnicity	% of Students, as Reported by Campus Parent Respondents	% of Students in Campus Population
African American	15.2%	20.7%
Asian	0.0%	0.7%
Hispanic	77.9%	70.8%
Native American	0.7%	0.2%
White	6.2%	7.6%

**What did parents report as their child's grade, and how does this compare to the grade level distribution of the student population?**

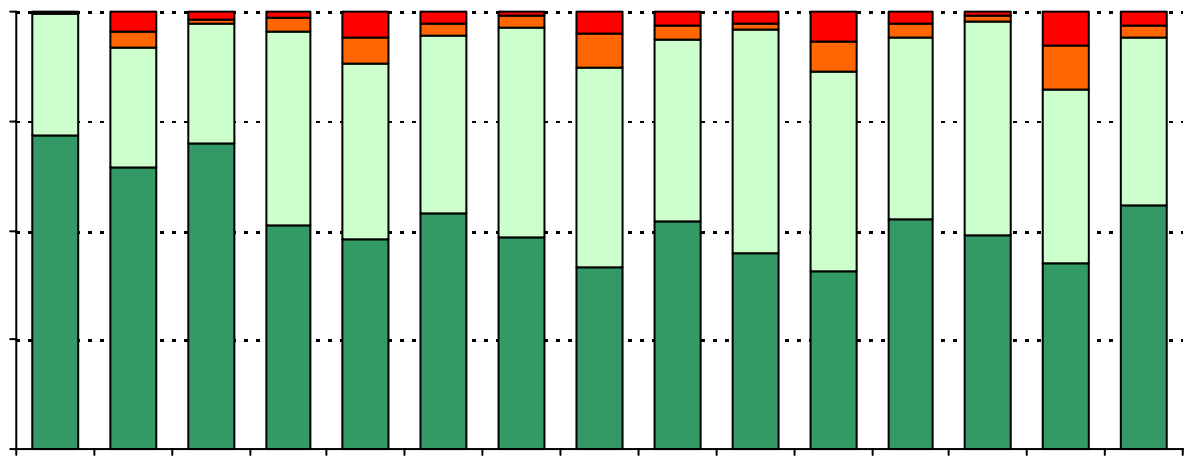
<b>Grade</b>	<b>% of Students, as Reported by Campus Parent Respondents</b>	<b>% of Students in Campus Population</b>
<b>EC</b>	0.0%	1.3%
<b>PK</b>	0.0%	15.1%
<b>K</b>	2.0%	15.7%
<b>1st</b>	13.1%	16.3%
<b>2nd</b>	25.3%	15.0%
<b>3rd</b>	32.3%	13.4%
<b>4th</b>	14.1%	13.2%
<b>5th</b>	13.1%	10.1%
<b>6th</b>	N/A	N/A

Note: Student population data are based on Fall PEIMS data submitted by the district to TEA, and may differ from the official AEIS report.

**USING THE RESULTS OF THE AISD PARENT SURVEY**

Each survey item is presented below, followed by a bar graph containing your school's results for two years and this year's results for all campuses at your level. You will be able to identify areas in which your school's results have changed over time, and you will be able to compare the responses of your school's parents to those of parents at your level district-wide.

Please examine your results to determine areas of strength and opportunities for improvement. Areas of strength can be identified by large percentages of parents who "Strongly Agree" or "Agree" with a statement. Opportunities for improvement can be identified by large percentages of parents who "Disagree" or "Strongly Disagree" with a statement. In addition, please look for patterns in which one staff category consistently receives more positive or negative responses than other staff categories. This will help you to identify opportunities for praise and areas in which training may be necessary. District responses for all schools at your level are also provided for comparison with 2005-2006 responses from your school. If your campus percentages are very





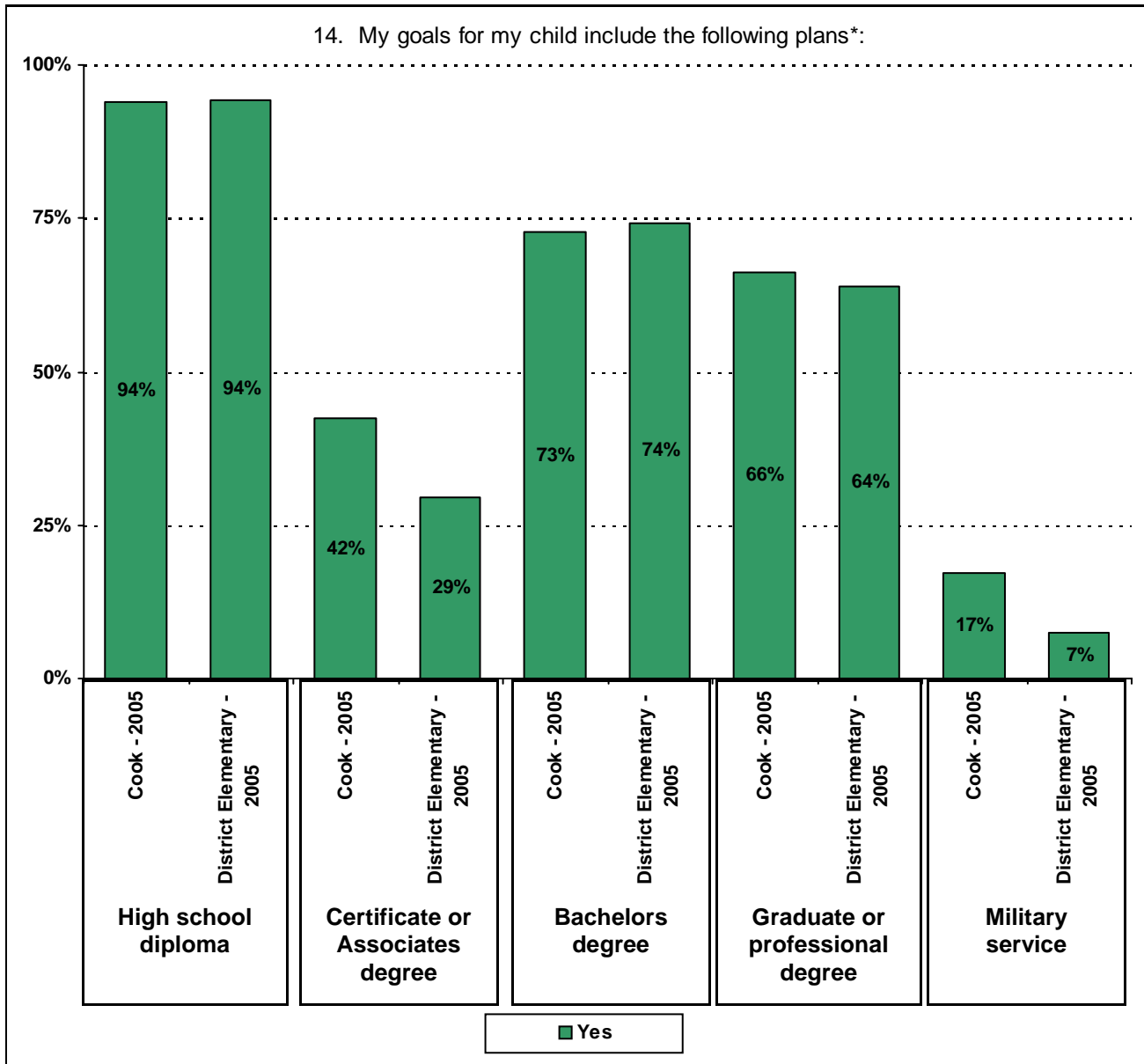


.....



**Required**





\* Item 14 was added to the survey in 2005. Respondents who selected Certificate, Associates, Bachelors, or Graduate degree were included in the "Yes" percentage for High School diploma, even if they did not select the High School diploma option. Respondents who selected Graduate degree were included in the "Yes" percentage for Bachelors degree, even if they did not select the Bachelors degree option.

## Item Response Details

Number of Cook Elementary School Parent Responses, by Response Option

		Strongly Agree	Agree	Disagree	Strongly Disagree	Don't Know/NA
<b>3a.</b>	<b>n = 159</b>	64	55	5	13	22
<b>3b.</b>	<b>n = 150</b>	56	54	3	11	26
<b>3c.</b>	<b>n = 146</b>	59	52	1	10	24
<b>3d.</b>	<b>n = 157</b>	74	60	2	7	14
<b>3e.</b>	<b>n = 164</b>	98	45	2	6	13
<b>5a.</b>	<b>n = 152</b>	55	51	13	10	23
<b>5b.</b>	<b>n = 141</b>	48	54	8	8	23
<b>5c.</b>	<b>n = 142</b>	48	53	9	6	26
<b>5d.</b>	<b>n = 150</b>	64	54	8	8	16
<b>5e.</b>	<b>n = 159</b>	95	41	5	7	11
<b>6a.</b>	<b>n = 148</b>	60	48	7	8	25
<b>6b.</b>	<b>n = 143</b>	46	60	5	6	26
<b>6c.</b>	<b>n = 143</b>	52	56	5	7	23
<b>6d.</b>	<b>n = 145</b>	51	55	8	6	25
<b>6e.</b>	<b>n = 166</b>	105	40	1	4	16
<b>7a.</b>	<b>n = 152</b>	57	51	8	11	25
<b>7b.</b>	<b>n = 144</b>	48	57	6	8	25
<b>7c.</b>	<b>n = 146</b>	52	53	6	8	27
<b>7d.</b>	<b>n = 145</b>	51	53	5	7	29
<b>7e.</b>	<b>n = 165</b>	90	46	4	7	18
<b>8a.</b>	<b>n = 155</b>	73	50	4	9	19
		66	49	2	6	23

Number of Cook Elementary School Parent Responses, by Response Option  
(Continued)

		Strongly Agree	Agree	Disagree	Strongly Disagree	Don't Know/NA
11a.	n = 151	74	50	3	7	17
11b.	n = 151	78	49	5	7	12
11c.	n = 156	82	51	1	11	11
11d.	n = 150	83	46	1	7	13
11e.	n = 147	72	51	2	6	16
11f.	n = 149	79	52	0	7	11
11g.	n = 150	75	54	4	5	12
11h.	n = 139	67	48	5	6	13
11i.	n = 129	56	36	2	6	29
12a.	n = 150	69	45	3	7	26
12b.	n = 151	71	43	4	8	25
12c.	n = 141	56	35	11	13	26
12d.	n = 150	63	47	5	7	24
12e.	n = 147	68	50	7	7	15
12f.	n = 149	68	48	7	8	18
13a.	n = 160	94	43	2	7	14
13b.	n = 148	75	41	3	8	21
13c.	n = 144	74	41	3	6	20
13d.	n = 148	71	42	2	8	25
13e.	n = 153	85	42	1	10	15
14.	n = 151	<p><i>Item 14 did not use the "Strongly Agree" to "Strongly Disagree" scale. Numbers below reflect the number of parents selecting each goal. These numbers will not sum to the total number of item respondents because parents may select multiple goals.</i></p> <p style="text-align: center;"> <b>Bachelors degree</b>      <b>Graduate/Professional</b> </p>				