



2006-2007 AISD Parent Survey Results

Casis Elementary School

The following report contains the results of the 2006-2007 AISD Parent Survey for your campus and all AISD schools at your level. The first section of this report provides a comparison of the campus demographics and the demographics reported by parents who responded to the survey from your campus. The next section describes the percentages of

How many parents responded to the survey in 2005-2006 and 2006-2007, and how does this compare to the number of students in the population each year?

	Campus	District EL	District MS	District HS
	110			
	700			
	175			
	743			

What did parents report as their child's ethnicity, and how does this compare to the ethnic distribution of the student population?

Ethnicity	% of Students, as Reported by Campus Parent Respondents	% of Students in Campus Population
	4.2%	
Asian	4.8%	3.2%
Hispanic	12.7%	11.4%
Native American	0.0%	0.0%
White	78.2%	82.4%

What did parents report as their child's grade, and how does this compare to the grade level distribution of the student population?

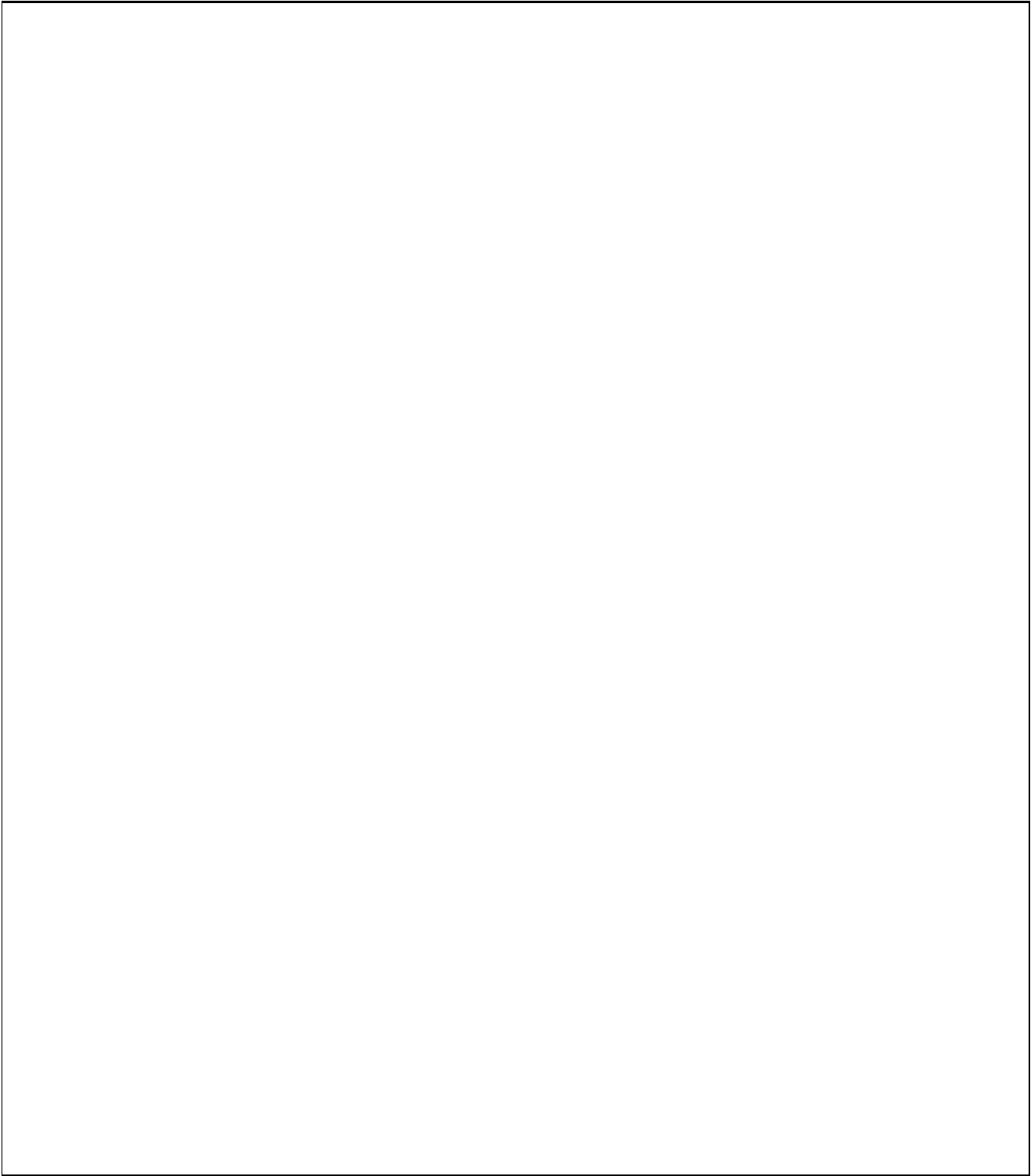
Grade	% of Students, as Reported by Campus Parent Respondents	% of Students in Campus Population
EC	2.4%	1.6%
PK	1.8%	1.3%
K	24.3%	17.8%
1st	24.3%	18.7%
2nd	12.4%	13.2%
3rd	12.4%	19.7%
4th	11.2%	14.3%
5th	11.2%	13.5%
6th	N/A	N/A

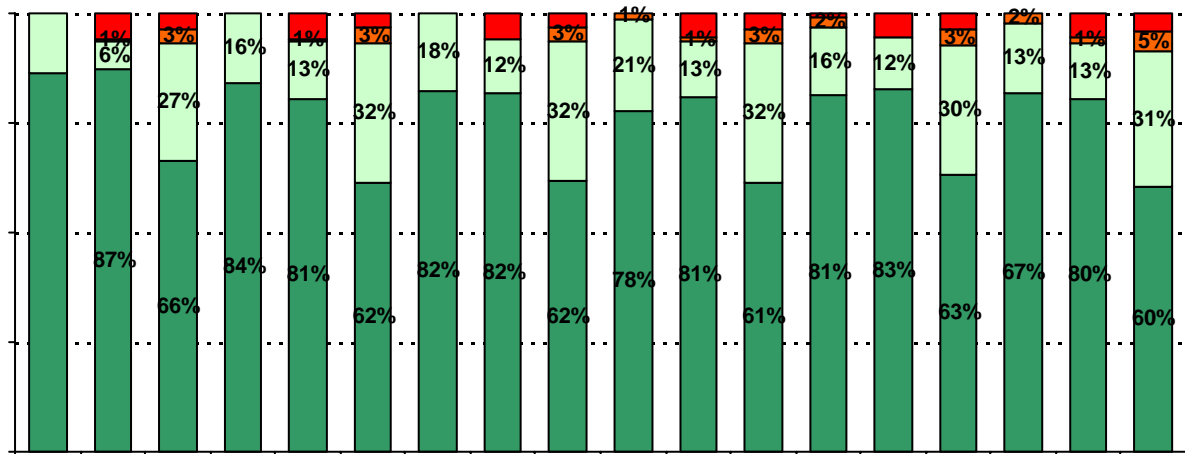
Note: Student population data are based on Fall PEIMS data submitted by the district to TEA, and may differ from the official AEIS report.

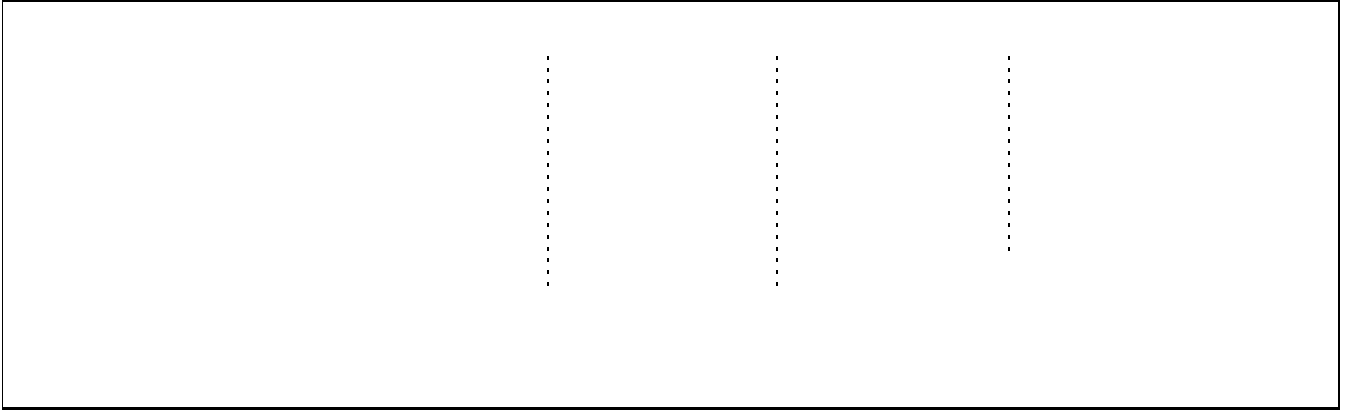
USING THE RESULTS OF THE AISD PARENT SURVEY

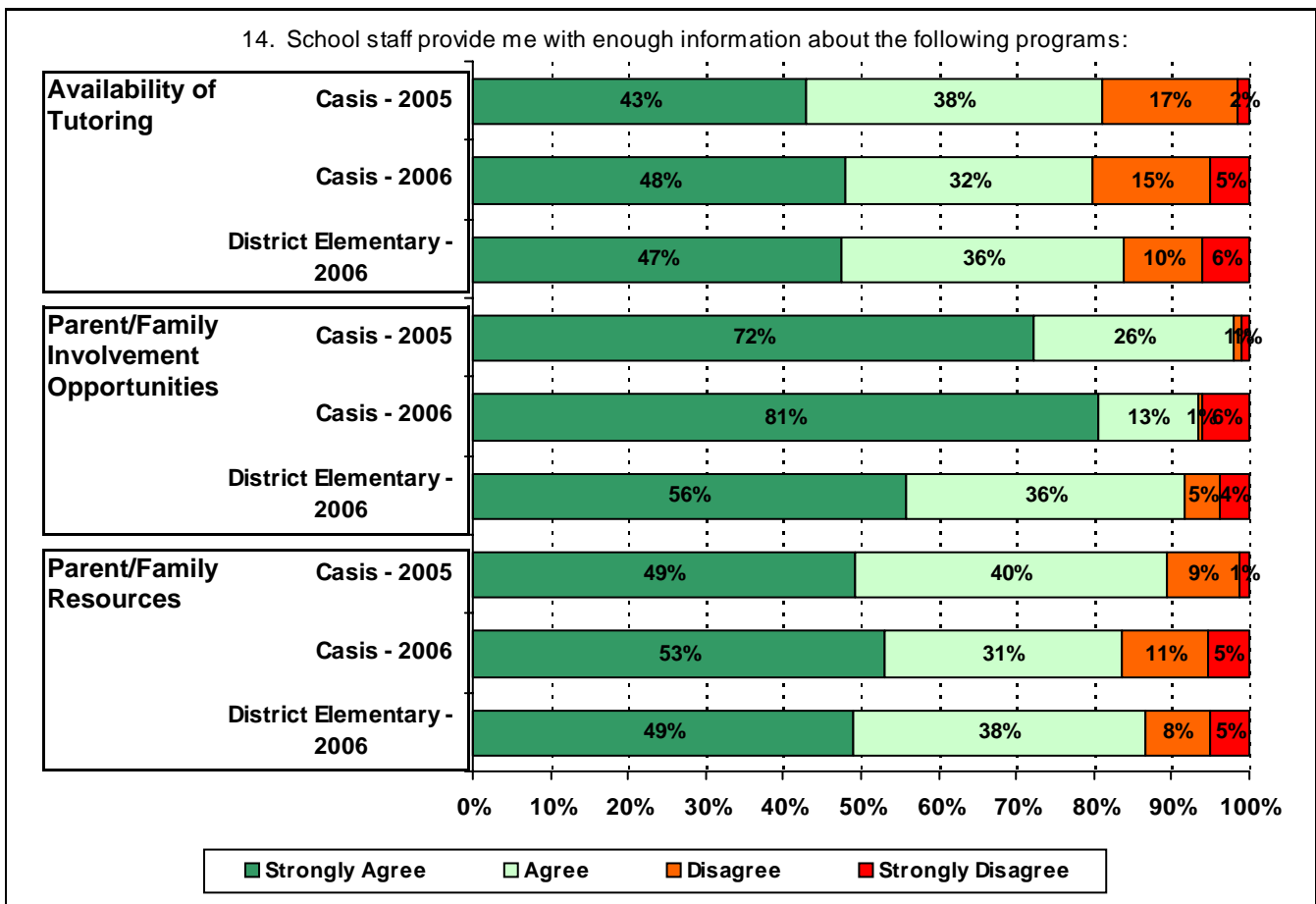
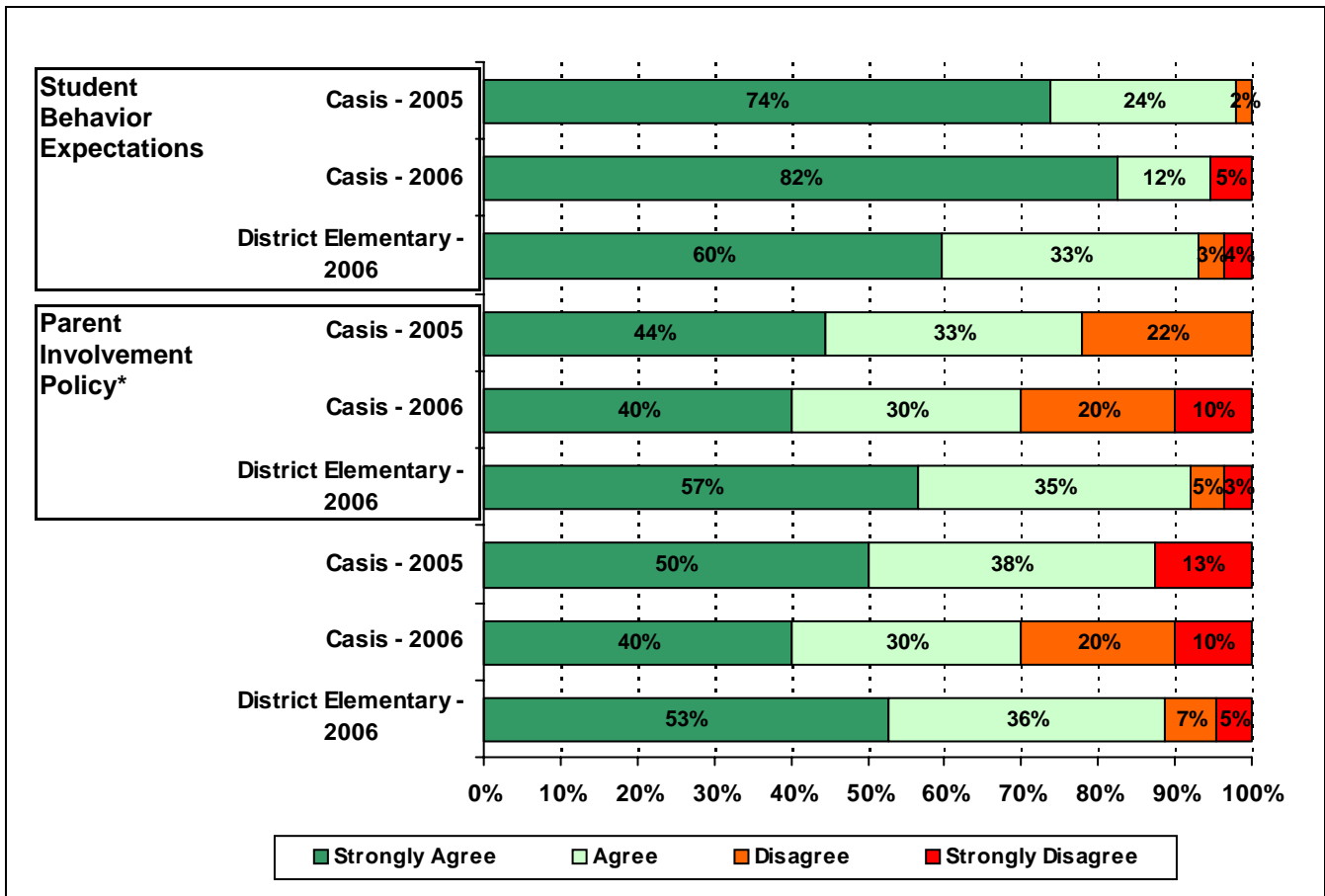
Each survey item is presented below, followed by a bar graph containing your school's results for two years and this year's results for all campuses at your level. You will be able to identify areas in which your school's results have changed over time, and you will be able to compare the responses of your school's parents to those of parents at your level district-wide.

Please examine your results to determine areas of strength and opportunities for improvement. Areas of strength can be identified by large percentages of parents who "Strongly Agree" or "Agree" with a statement. Opportunities for improvement can be identified by large percentages of parents who "Disagree" or "Strongly Disagree" with a statement. In addition, please look for patterns in which one staff category consistently receives more positive or negative responses than other staff categories. This will help you to identify opportunities for praise and areas in which training may be necessary. District responses for all schools at your level are also provided for comparison with 2006-2007 responses from your school. If your campus percentages are very

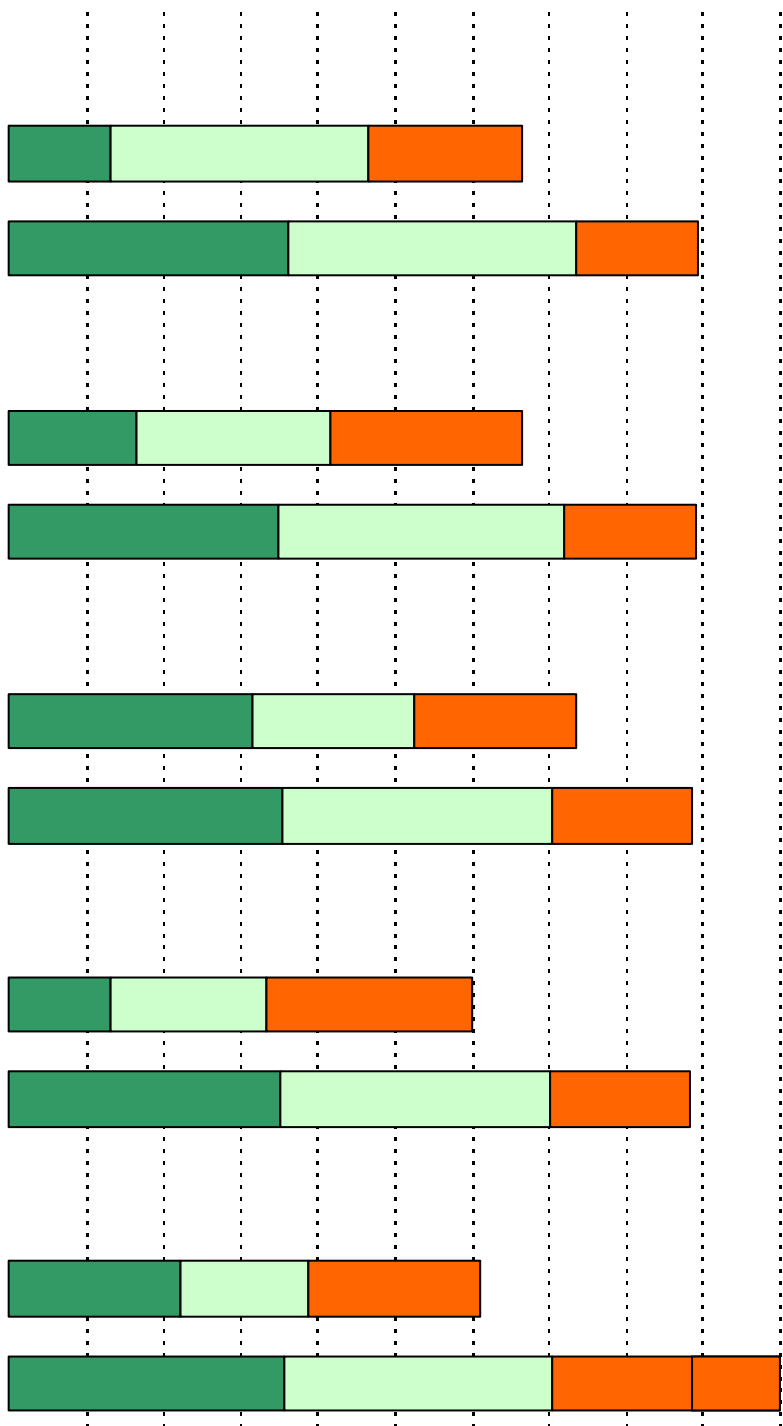








**Required
curriculum**





Item Response Details

Number of Casis Elementary School Parent Responses, by Response Option

		Strongly Agree	Agree	Disagree	Strongly Disagree	Don't Know/NA
4.	n = 163		1	162		
5a.	n = 171	141	20	0	9	1
5b.	n = 168	106	23	2	9	28
5c.	n = 168	108	21	0	9	30
5d.	n = 169	128	27	0	9	5
5e.	n = 168	146	12	0	10	0
6a.	n = 170	121	32	1	9	7
6b.	n = 168	94	30	1	8	35
6c.	n = 169	104	24	2	8	31
6d.	n = 169	112	33	0	8	16
6e.	n = 171	148	13	0	9	1
7a.	n = 166	96	48	3	8	11
7b.	n = 163	65	34	3	9	52
7c.	n = 164	79	32	5	7	41
7d.	n = 167	74	35	7	7	44
7e.	n = 171	140	19	0	10	2
8a.	n = 168	105	37	3	9	14
8b.	n = 168	77	33	4	9	45
8c.	n = 167	78	31	2	10	46
8d.	n = 167	69	30	3	7	58
8e.	n = 170	139	17	1	10	3
9a.	n = 170	135	19	0	9	7
9b.	n = 171	116	18	1	8	28
9c.	n = 171	122	18	0	9	22
9d.	n = 171	124	20	1	9	17
9e.	n = 172	148	11	1	10	2
9f.	n = 168	115	18	2	8	25
10.	n = 164	19	11	8	8	118
11.	n = 168	122	32	1	8	5
12.	n = 169	125	30	4	8	2

Number of Casis Elementary School Parent Responses, by Response Option
(Continued)

		Strongly Agree	Agree	Disagree	Strongly Disagree	Don't Know/NA
13a.	n = 167	136	20	0	9	2
13b.	n = 167	128	26	2	8	3
13c.	n = 168	117	32	5	5	9
14a.	n = 167	57	38	18	6	48
14b.	n = 166	133	21	1	10	1
14c.	n = 167	71	41	15	7	33
15a.	n = 169	128	29	2	9	1
15b.	n = 167	101	29	3	10	24
15c.	n = 167	84	28	4	7	44
15d.	n = 167	74	25	2	7	59
15e.	n = 168	127	27	2	9	3
20.	n = 175					