

How many parents responded to the survey in 2004-2005 and 2005-2006, and how does this compare to the number of students in the population each year?

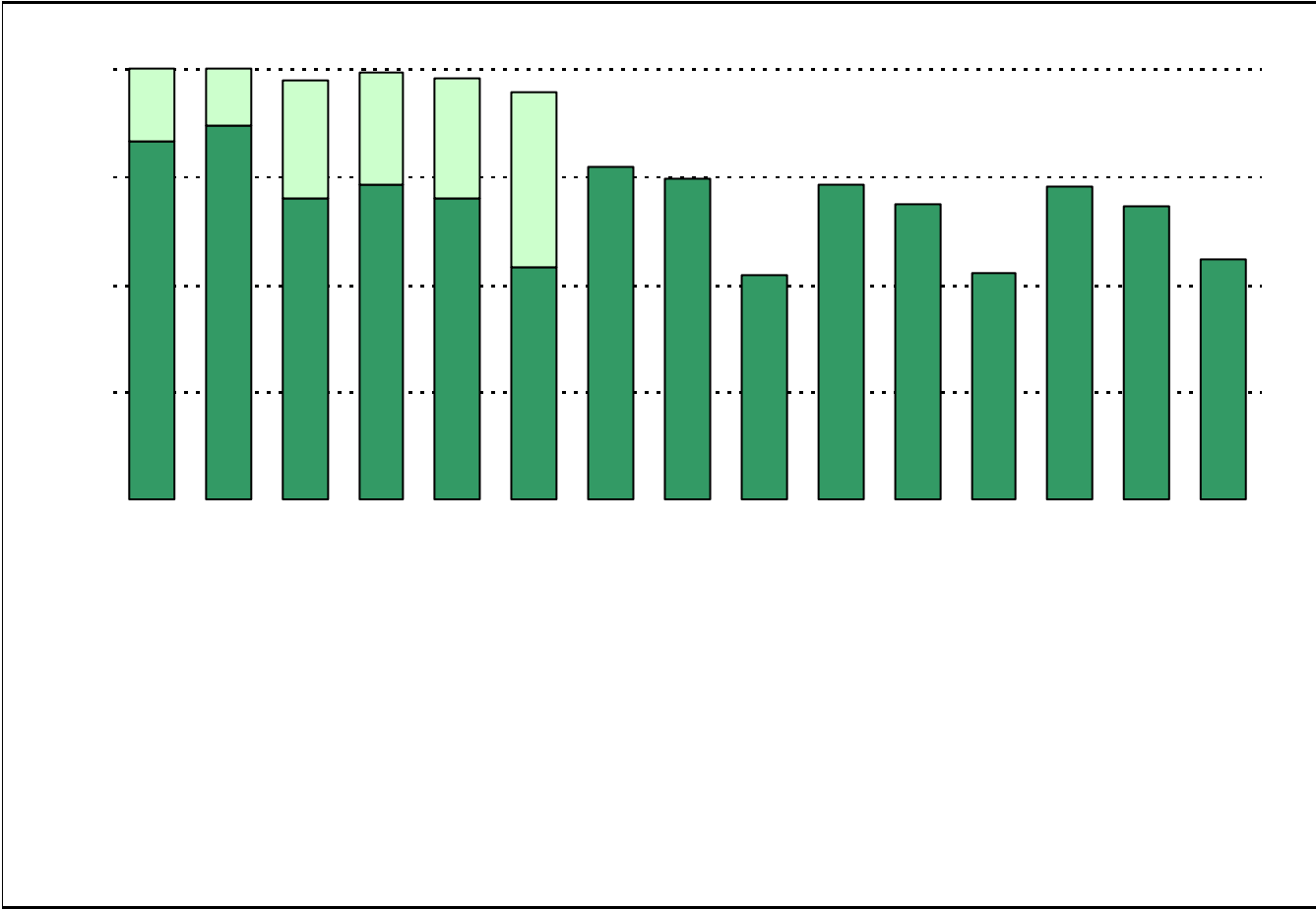
	Campus	District EL	District MS	District HS
	<i>16.4%</i>			
	<i>15.7%</i>			

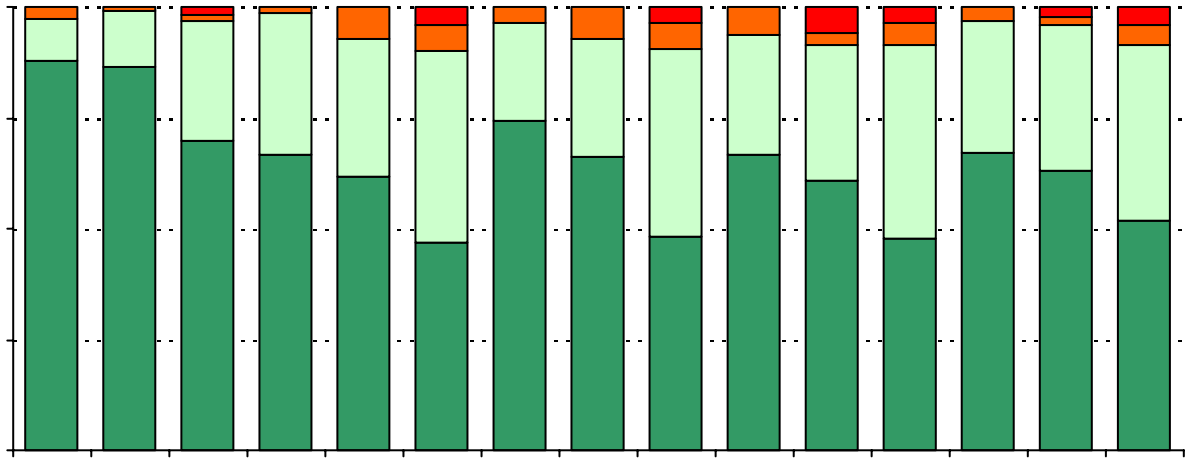


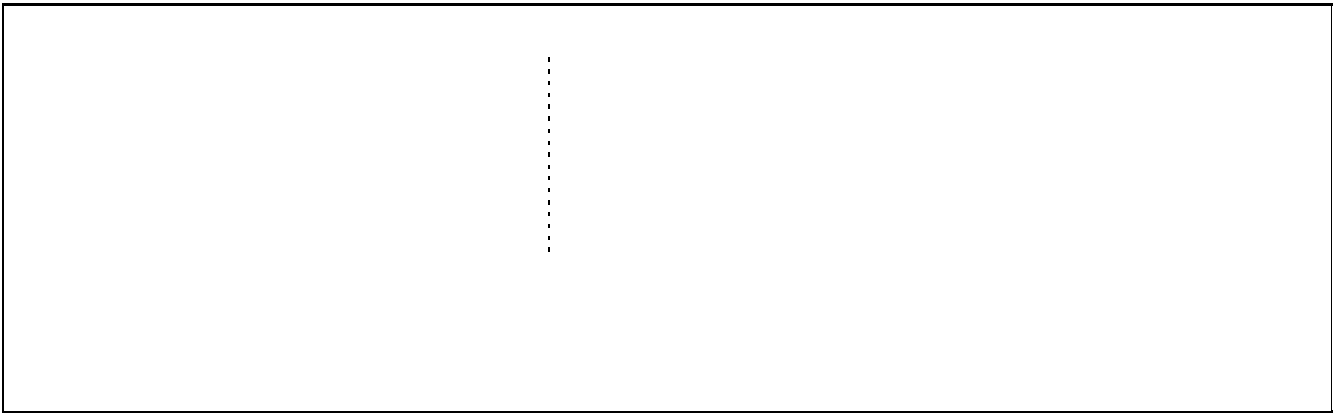
What did parents report as their child's grade, and how does this compare to the grade level distribution of the student population?

Grade	% of Students, as Reported by Campus Parent Respondents	% of Students in Campus Population
EC		
PK		
K		
1st		
2nd		
3rd		
4th		
5th		
6th		

USING THE RESULTS OF THE AISD PARENT SURVEY





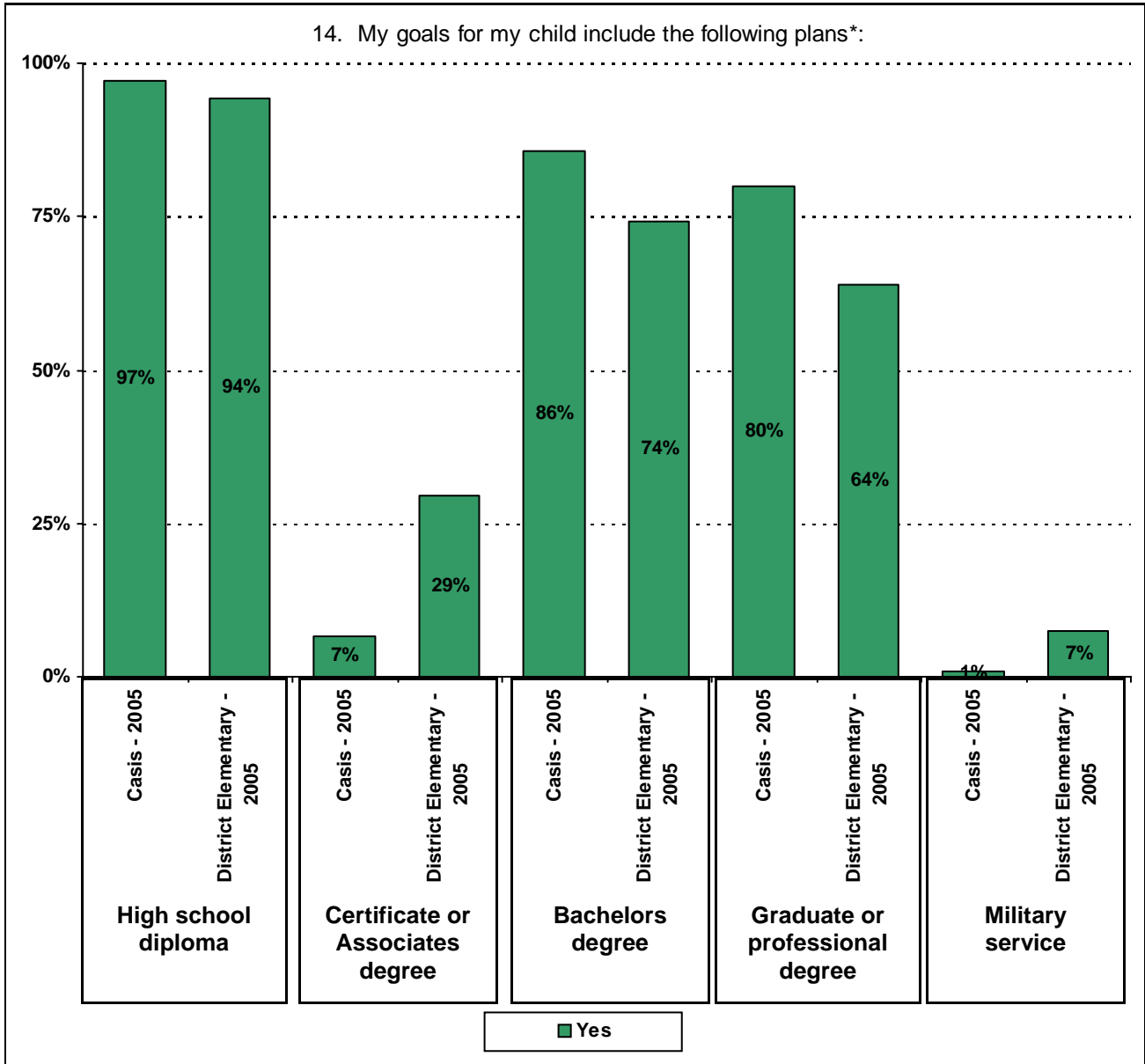


.....



Required

14. My goals for my child include the following plans*:



* Item 14 was added to the survey in 2005. Respondents who selected Certificate, Associates, Bachelors, or Graduate degree were included in the "Yes" percentage for High School diploma, even if they did not select the High School diploma option. Respondents who selected Graduate degree were included in the "Yes" percentage for Bachelors degree, even if they did not select the Bachelors degree option.

Item Response Details

		Strongly Agree	Agree	Disagree	Strongly Disagree	Don't Know/NA
4a.	n = 106					
4b.	n = 106					
4c.	n = 105					
4d.	n = 106					
4e.	n = 105					
5a.	n = 104					
5b.	n = 104					
5c.	n = 104					
5d.	n = 103					
5e.	n = 105					
6a.	n = 104					
6b.	n = 103					
6c.	n = 104					
6d.	n = 103					
6e.	n = 104					
7a.	n = 103					
7b.	n = 102					
7c.	n = 100					
7d.	n = 101					
7e.	n = 105					
8a.	n = 106					
8b.	n = 106					
8c.	n = 105					
8d.	n = 106					
8e.	n = 105					
8f.	n = 102					
9.	n = 103					
10.	n = 103					

		Strongly Agree	Agree	Disagree	Strongly Disagree	Don't Know/NA
11a.	n = 103					
11b.	n = 104					
11c.	n = 104					
11d.	n = 104					
11e.	n = 104					
11f.	n = 104					
11g.	n = 105					
11h=	104					
11i.	n = 101					
12a.	n = 98					
12b.	n = 97					
12c.	n = 101					
12d.	n = 98					
13a.	n = 103					
13b.	n = 101					
13c.	n = 103					
13d.	n = 102					
13e.	n = 104					