

	Casey	Casey	Casey	All Elementary Schools
	2.79	2.88	2.86	3.04
	2.52	2.59	2.63	2.79
	2.93	3.00	2.98	3.13

First, examine your campus scores for changes over time. Green upward-facing arrows indicate a statistically meaningful increase in average score from the previous year, red downward-facing arrows indicate a statistically meaningful decrease from the previous year. It is particularly important to examine the individual item responses on the following pages for any subscales with meaningful changes from year to year. If you do not see any arrows, changes in your school's dimension or subscale scores may not represent meaningful differences from year to year.

If the average score for your campus has increased in a particular area, please consider campus policies and practices that may be responsible for these improvements. Conversely, if the average score has decreased, please examine any changes on your campus that may account for these declines and consider possible strategies for improvement. Page 6 contains more information about ways to improve school climate.

Scores for your campus this year should be examined relative to the scores for all schools at your level. If your school's average score for a dimension or subscale is lower than the average for all schools at your level, individual item responses will help you to identify areas for targeted improvement efforts. Alternatively, if your school's average score for this year is higher than the average for all schools at your level, individual item responses will provide more detailed information regarding specific areas of strength to help you identify successful strategies.

The following pages contain response averages for each survey item, grouped by subscale. More detailed information regarding the percentage of students selecting each response option may be found in the Appendix at the end of this report.

All Elementary			
	2.59	2.65	2.74
	2.69	2.71	2.87
	2.75	2.86	2.98
	2.39	2.31	2.54

<i>Behavioral Expectations Items</i>	Casey 03-04	Casey 04-05	Casey 05-06	All Elementary Schools 05-06
9. Everyone knows what the school rules are.	2.88	2.93	2.89	3.11
12. The school rules are strictly enforced.	3.16	3.16	3.16	3.24
13. If a school rule is broken, students know what kind of punishment will follow.	2.74	2.97	2.99	3.08
Behavioral Expectations Average	2.93	3.00	2.98	3.13

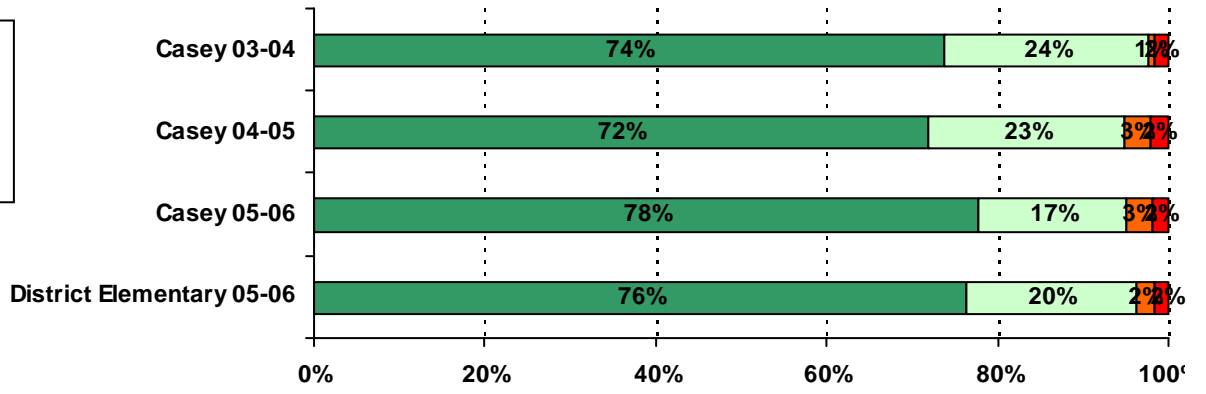


<i>Teacher Support and Engagement Items</i>	Casey 03-04	Casey 04-05	Casey 05-06	All Elementary Schools 05-06
18. Teachers give rewards or praise for good behavior.	3.31	3.22	3.31	3.37
31. Teachers give rewards or praise for good work.	3.27	3.16	3.21	3.33
27. My teachers are excited about what they teach.	3.17	3.28	3.33	3.41
28. My teachers seem to enjoy teaching.	3.49	3.45	3.52	3.54
36. Teachers give me the help I need with	3.32	3.33	3.36	
enthusias(81)-0.51.1th14 Tmat0.51.1te enjoy display 14 Tm.698 50rt14..140 --0.3.o0 Tw{22.534.ssig5807(n)teSupac grrera i for.the su	3.07	3.13	3.23	
	3.10	3.12	3.26	
Teacher Support and Engagement Average	3.24	3.22	3.30	3.39

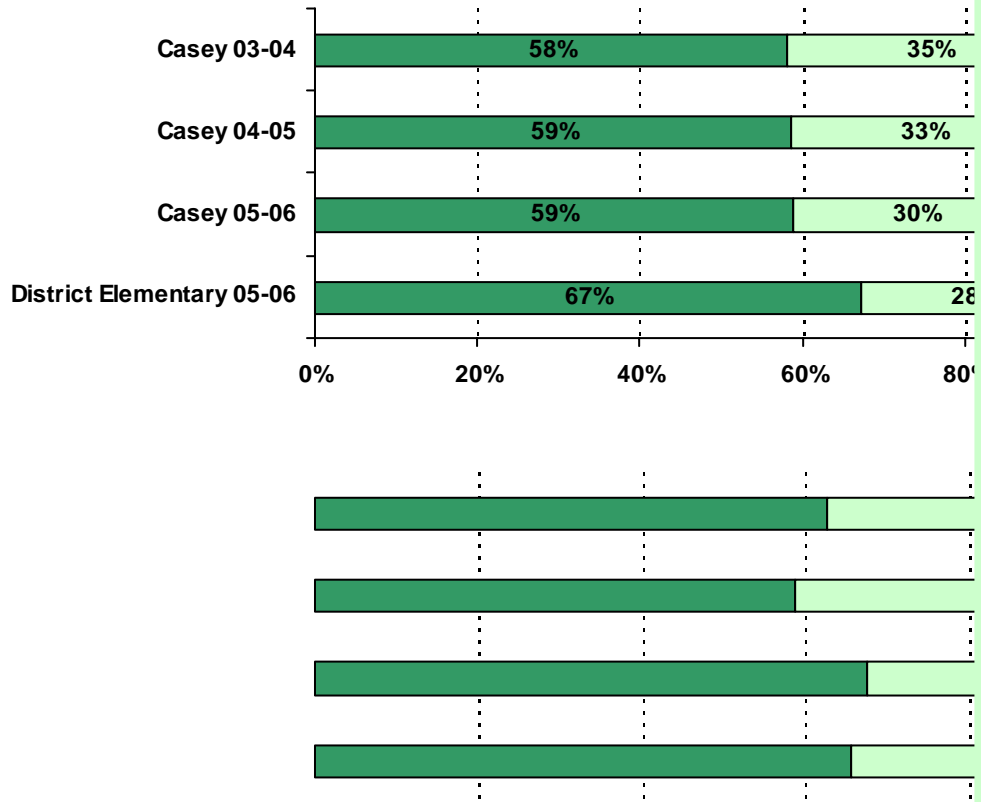
<i>Adult Fairness and Respect Items</i>	Casey 03-04	Casey 04-05	Casey 05-06	All Elementary Schools 05-06
4. Teachers at this school care about their students.	3.69	3.65	3.71	3.71
5. Adults at this school listen to student ideas and opinions	3.19	3.19	3.30	3.31
6. Adults at this school treat all students fairly.	3.14	3.19	3.28	3.28
7. The staff in the front office respect students.	3.49	3.48	3.43	3.60
	3.10	3.24	3.30	
	3.27	3.22	3.27	
Adult Fairness and Respect Average	3.31	3.31	3.36	3.41

<i>Academic Self-Confidence Items</i>	Casey 03-04	Casey 04-05	Casey 05-06	All Elementary Schools 05-06
22. I have learned how to listen better so I can understand the ideas of other students.	3.29	3.29	3.36	3.41
23. I have learned how to explain my ideas more clearly to others in discussions.	3.15	3.21	3.17	3.29
24. I have learned how to explain my ideas in writing more clearly.	3.22	3.18	3.22	3.34
32. I have learned to reach the goals I set for myself.			3.40	3.43
33. I h.6(.8534s8{3.}-9.1 1 1 scn497a1	3.30	3.29	3.39	
	3.40	3.31	3.27	
	3.27	3.21	3.30	
Academic Self-Confidence Average	3.29	3.25	3.30	3.39

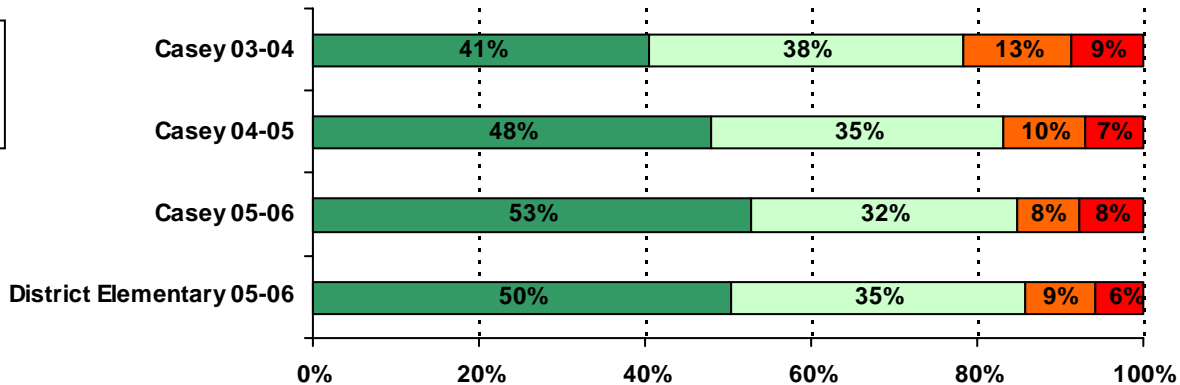
4. Teachers at this school care



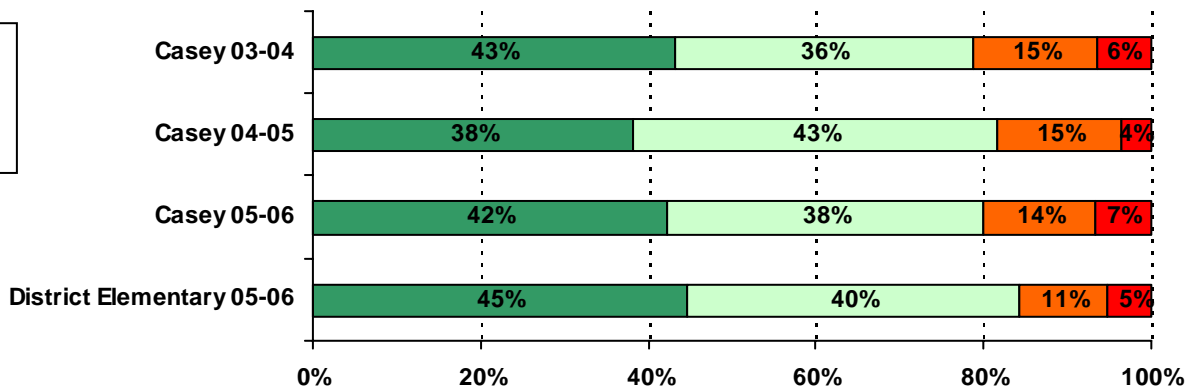
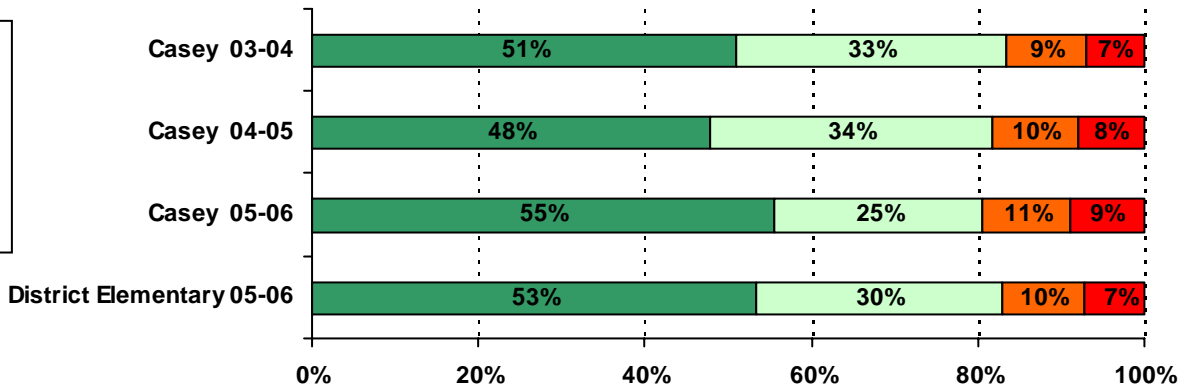
7. The staff in the front office respect students.

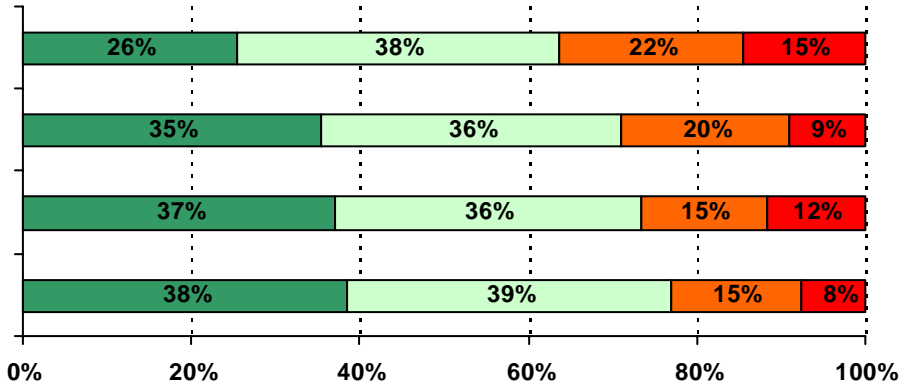


10. The school rules are fair.

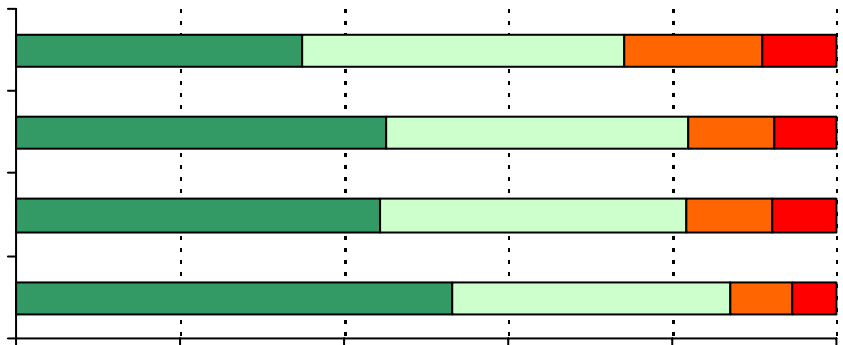
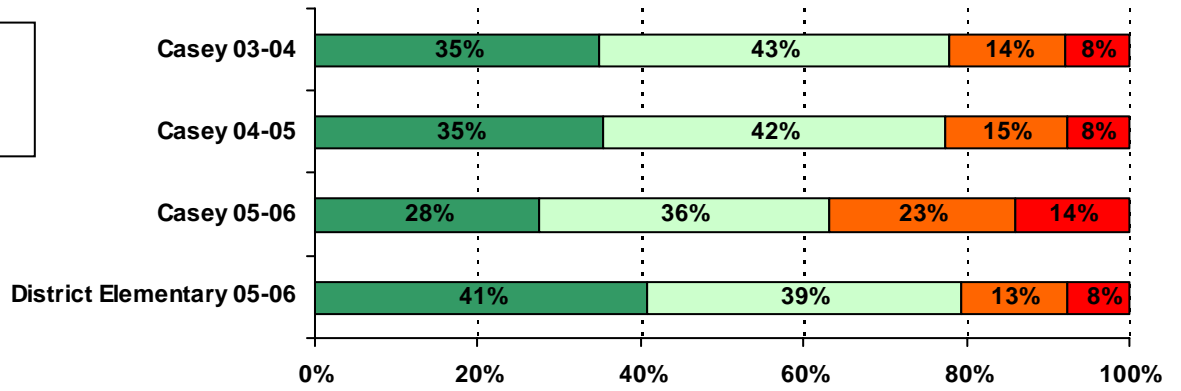


11. The punishment for breaking school rules is the same no matter who you are.

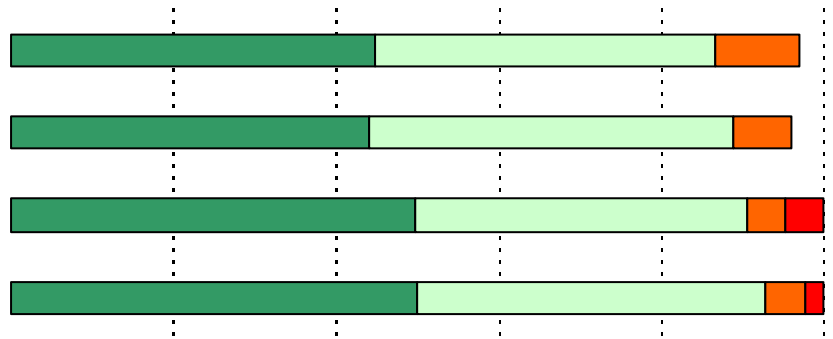


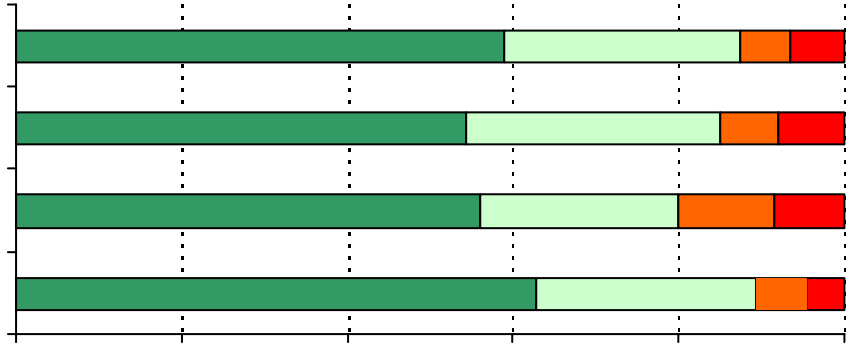


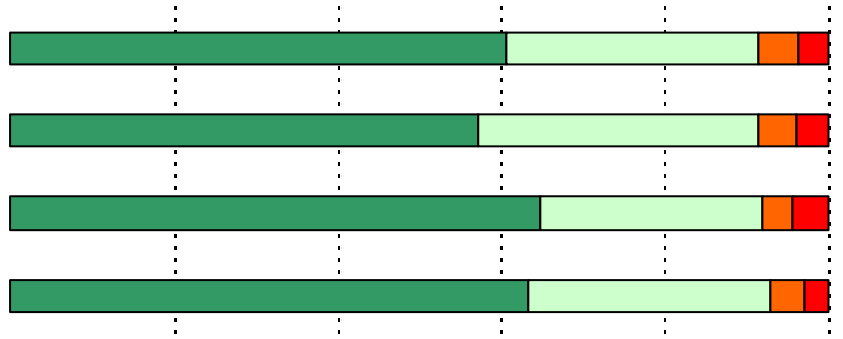
16. This school is clean.











.....

