



2006-2007 AISD Parent Survey Results

Casey Elementary School

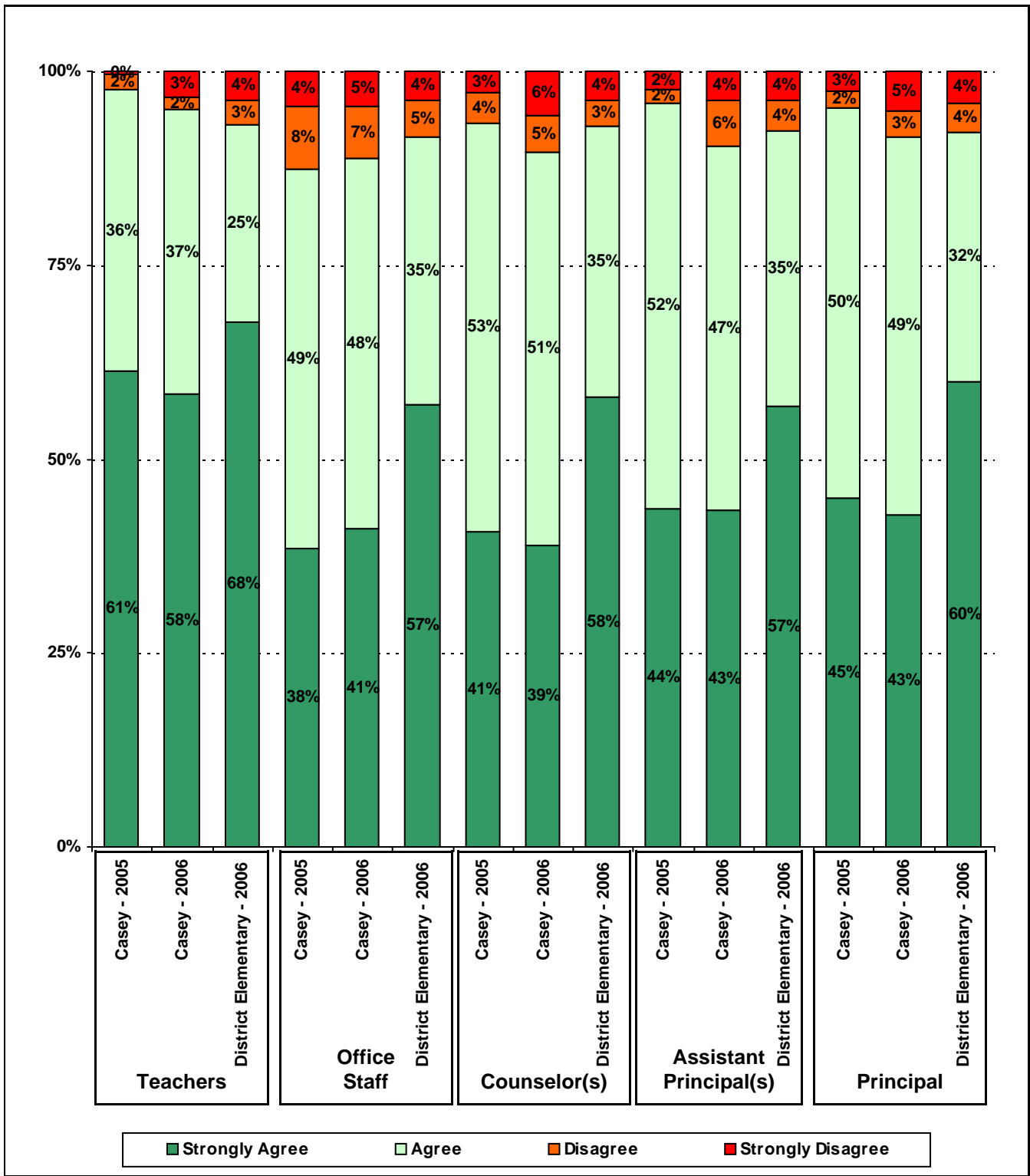
The following report contains the results of the 2006-2007 AISD Parent Survey for your campus and all AISD schools at your level. The first section of this report provides a comparison of the campus demographics and the demographics reported by parents who responded to the survey from your campus. The next section describes the percentages of parents selecting specific responses for each survey item, and the final section indicates the actual number of parents who selected each response option. Campus survey results should be examined for areas of strength and opportunities for improvement. Results for all AISD schools

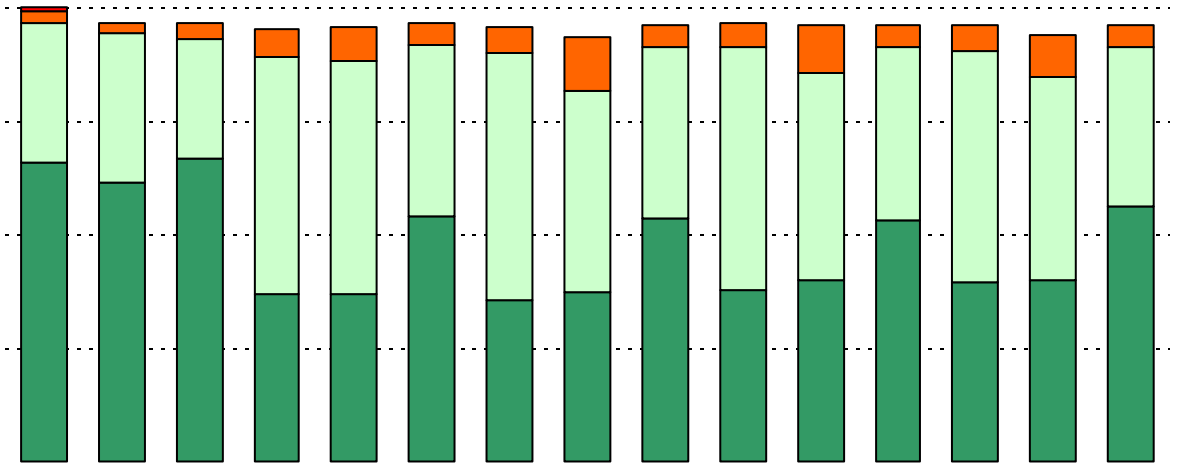
How many parents responded to the survey in 2005-2006 and 2006-2007, and how does this compare to the number of students in the population each year?

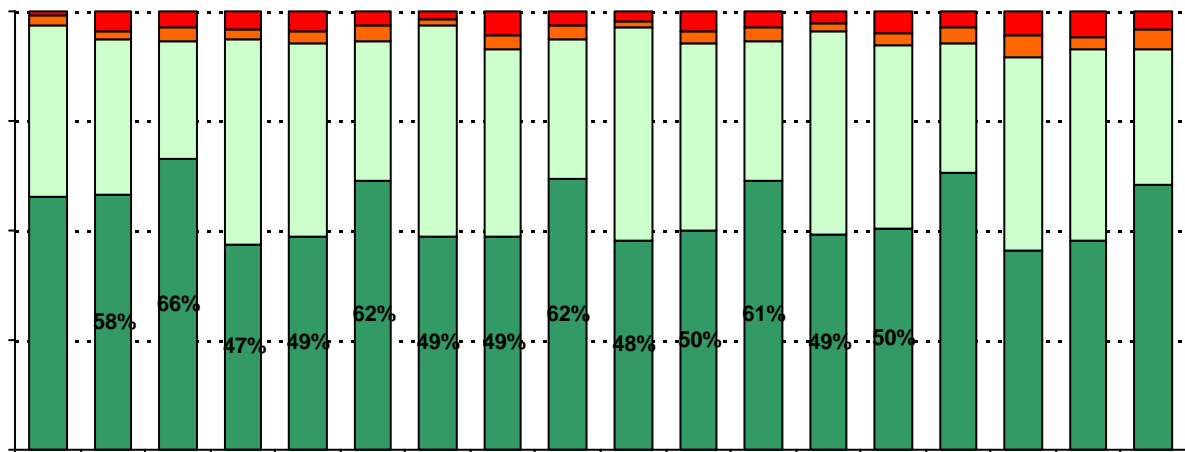
	Campus	District EL	District MS	District HS
	434			
	959			
	45.3%			
	349			
	918			
	38%			

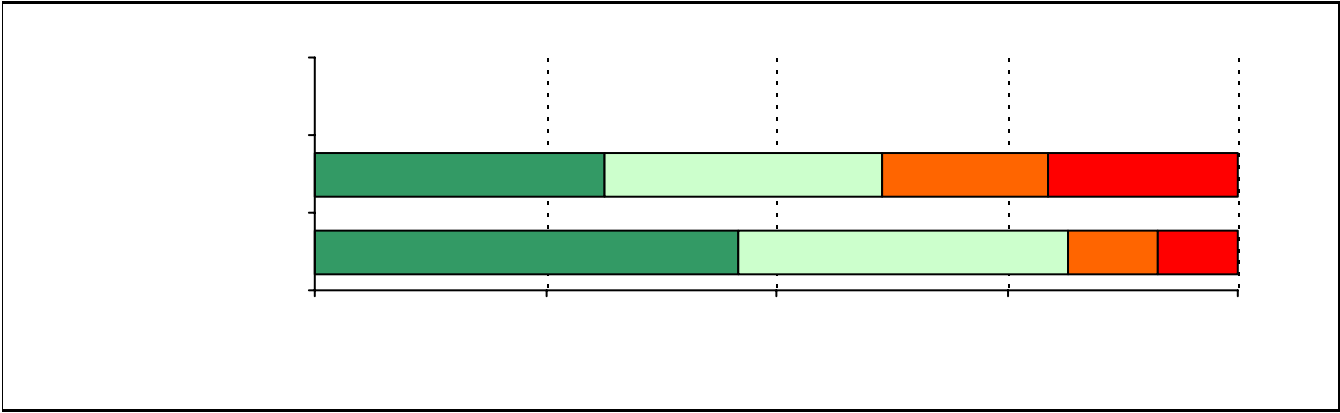
What did parents report as their child's ethnicity, and how does this compare to the ethnic distribution of the student population?

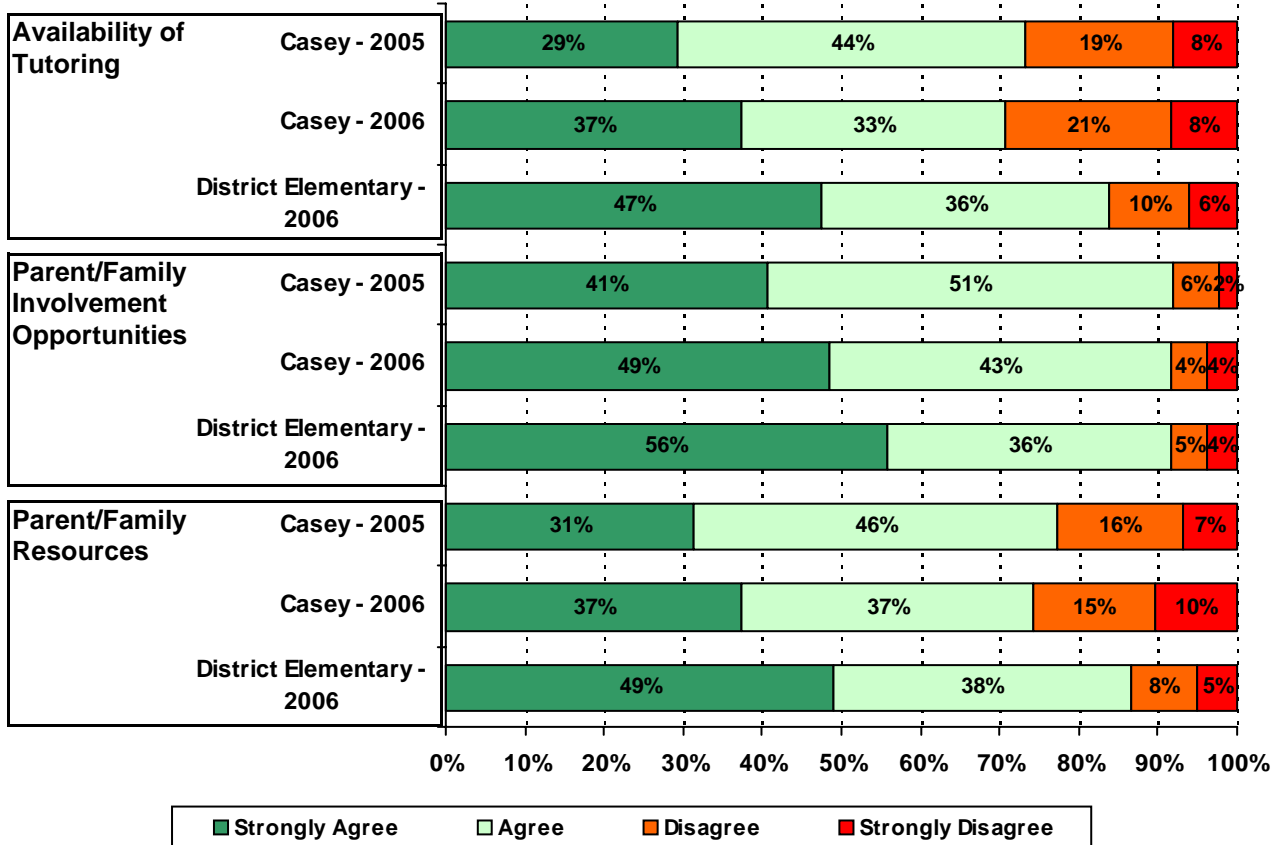
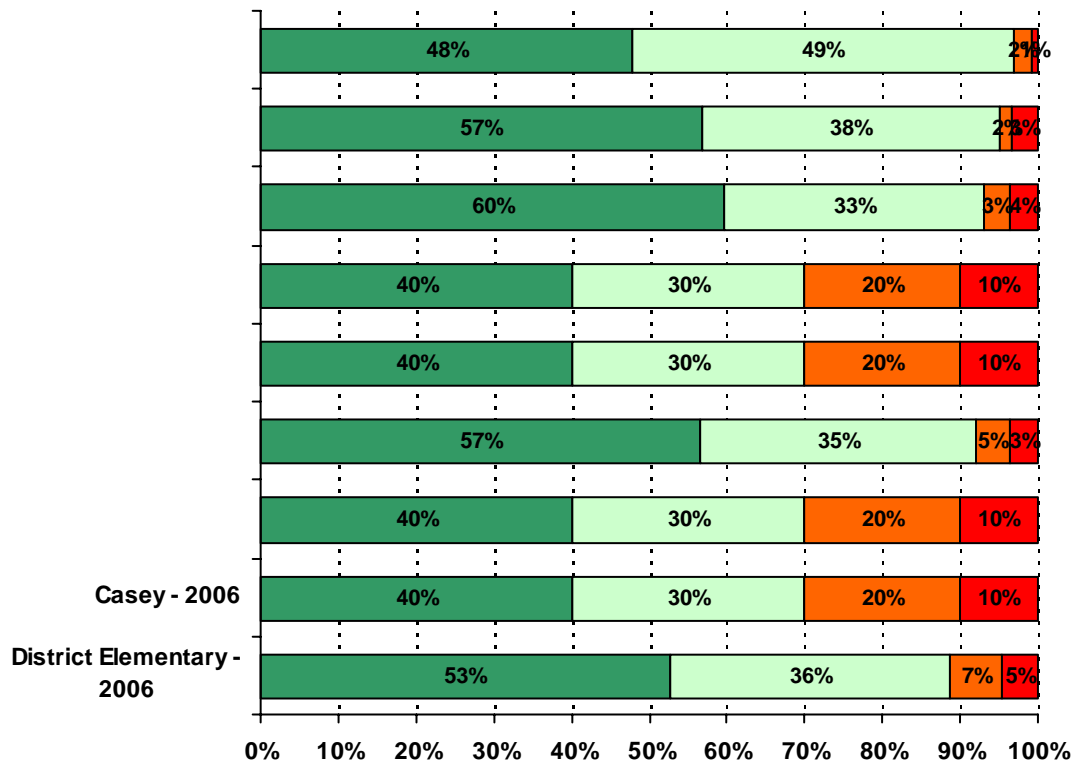
Ethnicity	% of Students, as Reported by Campus Parent Respondents	% of Students in Campus Population
Asian	7.0%	3.6%
Hispanic	63.5%	62.5%
Native American	1.3%	0.2%
White	23.1%	23.1%











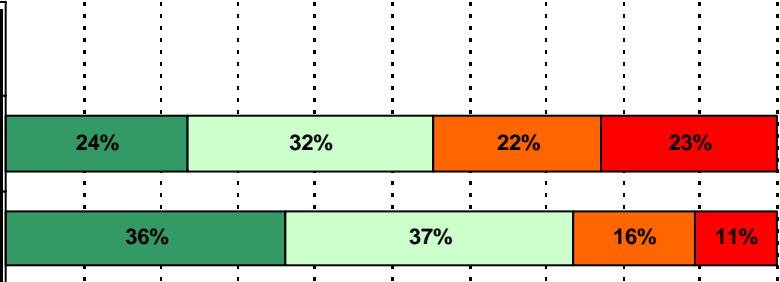
**Required
curriculum**

High school graduation requirements and plans

Casey - 2005

Casey - 2006

District Elementary - 2006

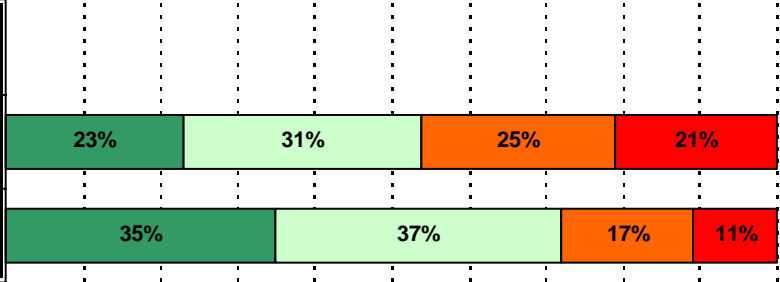


Personal graduation plans (PGPs)

Casey - 2005

Casey - 2006

District Elementary - 2006

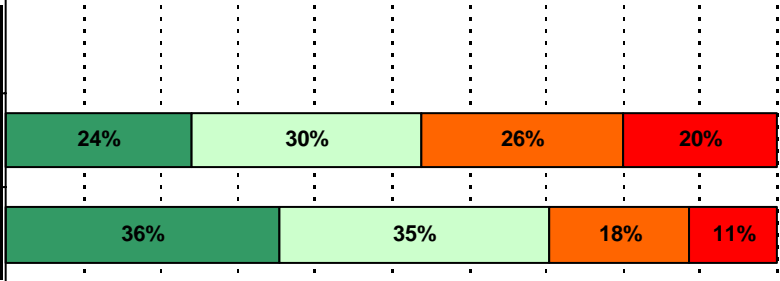


Financial aid and scholarships

Casey - 2005

Casey - 2006

District Elementary - 2006

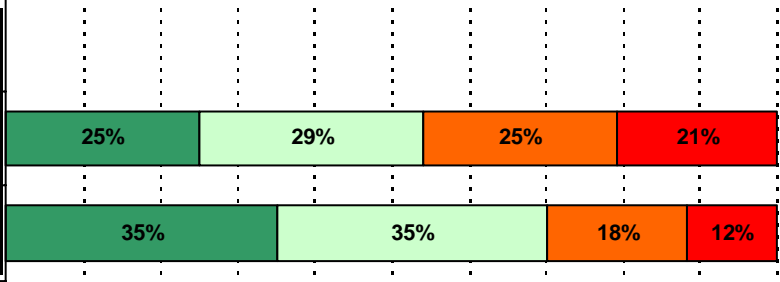


College opportunities

Casey - 2005

Casey - 2006

District Elementary - 2006

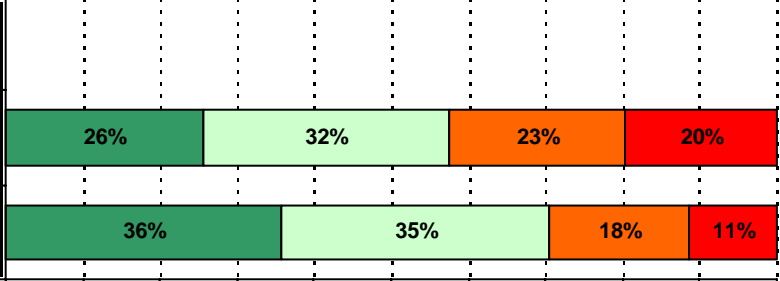


Career opportunities

Casey - 2005

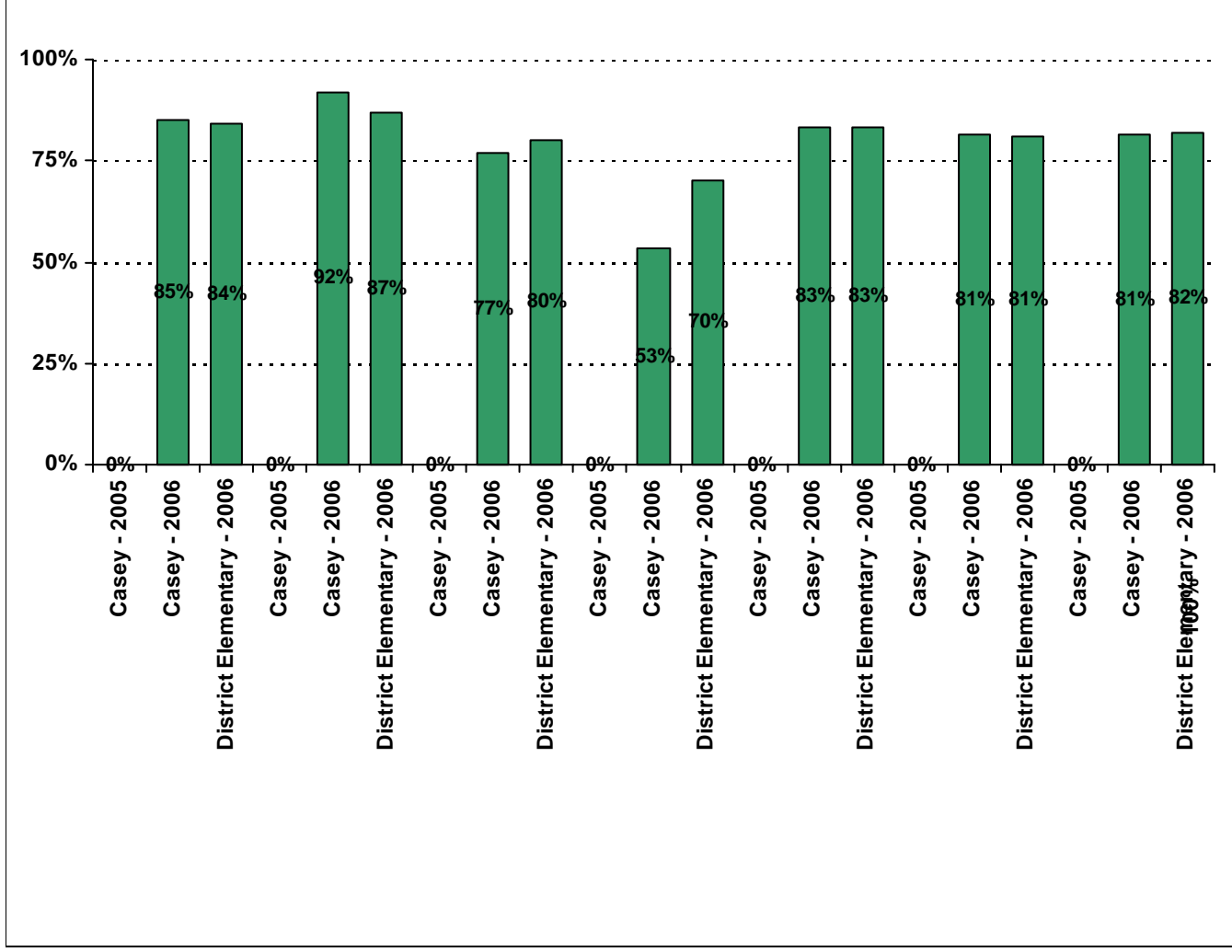
Casey - 2006

District Elementary - 2006

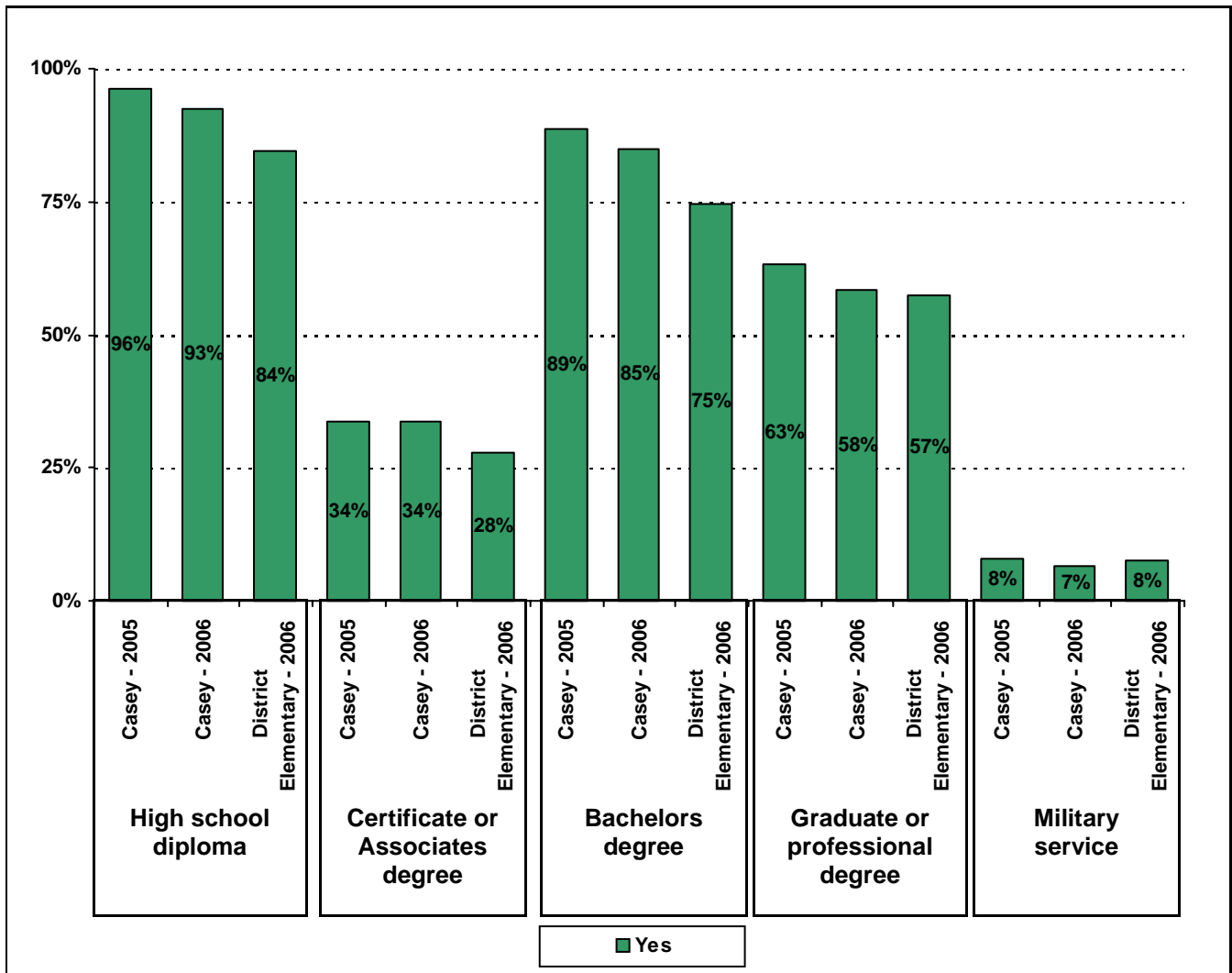


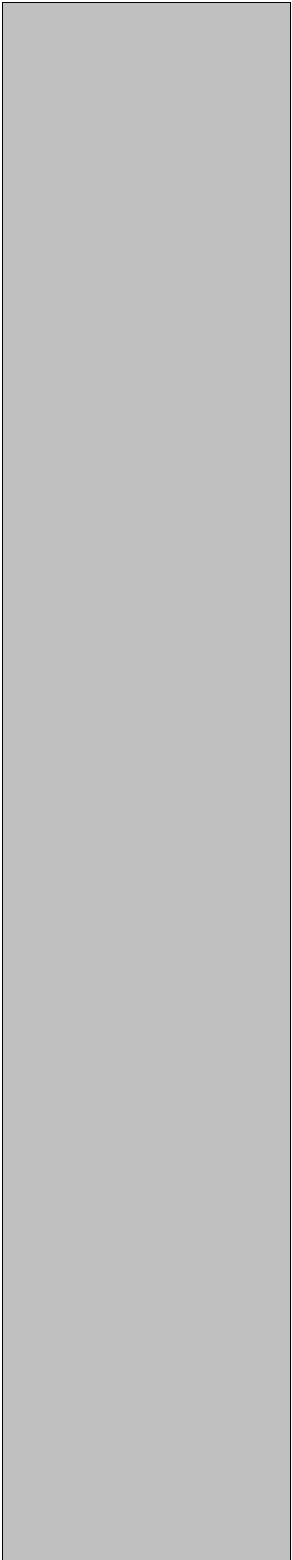
0% 10% 20% 30% 40% 50% 60% 70% 80% 90% 100%





2-04TJe2(v)9242n4 8c5(5#A0-7/n16n6(2006)J#60811-24217 TD-00563 T21 5m)1256i98562(#Agre





Number of Casey Elementary School Parent Responses, by Response Option
(Continued)

		Strongly Agree	Agree	Disagree	Strongly Disagree	Don't Know/NA
13a.	n = 336	186	125	5	11	9
13b.	n = 336	164	129	15	12	16
13c.	n = 333	143	122	28	20	20
14a.	n = 333	100	89	56	22	66
14b.	n = 334	153	136	14	12	19
14c.	n = 329	97	96	40	27	69
15a.	n = 342	196	123	9	9	5
15b.	n = 331	139	117	31	8	36
15c.	n = 330	144	110	21	9	46
15d.	n = 329	136	106	20	11	56
15e.	n = 329	192	115	7	7	8

20d a.-5.4(n = 349)

Item 20 did not use the "Strongly Agree" to "Strongly Disagree" scale. Numbers below reflect

1294 4666 13 -1.6169 TD01.8589 -c34358)6a.25)6.36agre28.8(40)3105.3272-4593.916T1684-0.0