



2005-2006 AISD Parent Survey Results

Campbell Elementary School

The following report contains the results of the 2005-2006 AISD Parent Survey opportunities for improvement. Responses from other schools at your level and results for your campus from 2004-2005 are presented for comparison.

How many parents responded to the survey in 2004-2005 and 2005-2006, and how does this compare to the number of students in the population each year?

	Campus	District EL	District MS	District HS
2004-2005	211			
2005-2006	429			
	49.2%			
2004-2005	187			
2005-2006	418			
	44.7%			

Note: The ratio of parent respondents to students is listed above as a percentage for ease of interpretation; however, it is the number of parents who responded per 100 students enrolled.

What did parents report as their child's ethnicity, and how does this compare to the ethnic distribution of the student population?

Ethnicity	% of Students, as Reported by Campus Parent Respondents	% of Students in Campus Population
Asian	65.2%	0.2%
Hispanic	0.0%	35.9%
Native American	34.2%	0.0%
White	0.0%	0.7%

What did parents report as their child's grade, and how does this compare to the grade level distribution of the student population?

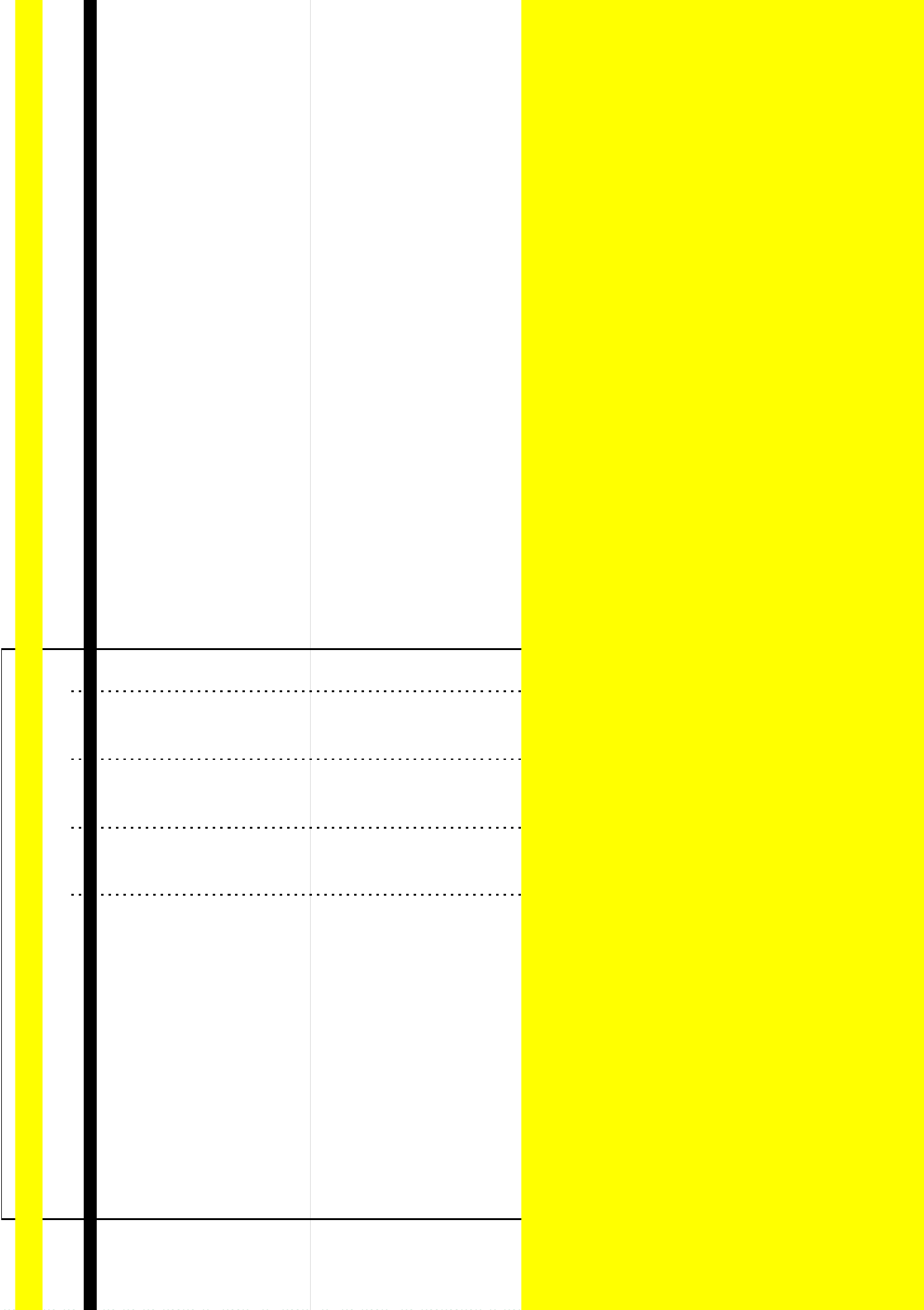
Grade	% of Students, as Reported by Campus Parent Respondents	% of Students in Campus Population
EC	N/A	N/A
PK	0.8%	12.7%
K	0.8%	19.1%
1st	26.8%	15.1%
2nd	16.5%	12.4%
3rd	12.6%	13.9%
4th	22.0%	12.9%
5th	20.5%	13.9%
6th	N/A	N/A

Note: Student population data are based on Fall PEIMS data submitted by the district to TEA, and may differ from the official AEIS report.

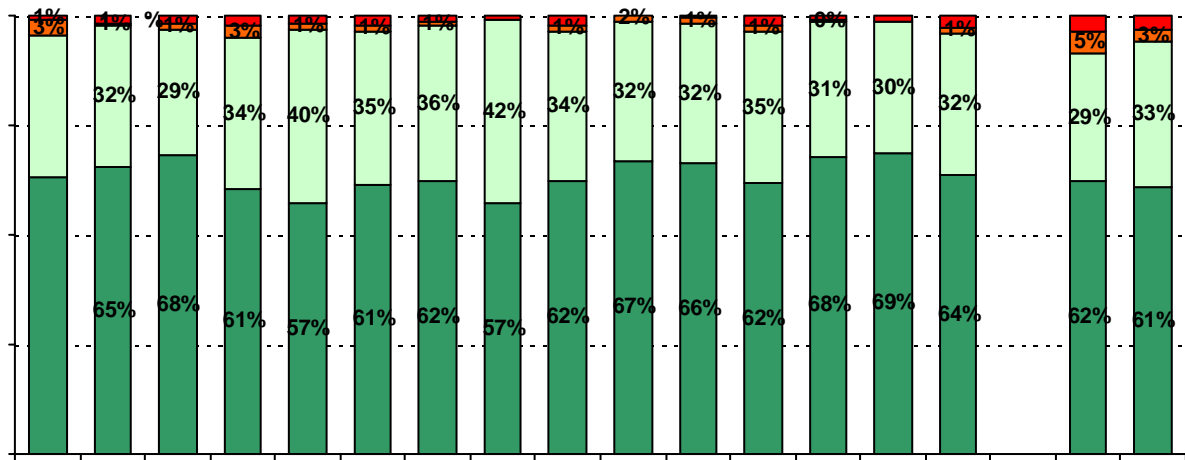
USING THE RESULTS OF THE AISD PARENT SURVEY

Each survey item is presented below, followed by a bar graph containing your school's results for two years and this year's results for all campuses at your level. You will be able to identify areas in which your school's results have changed over time, and you will be able to compare the responses of your school's parents to those of parents at your level district-wide.

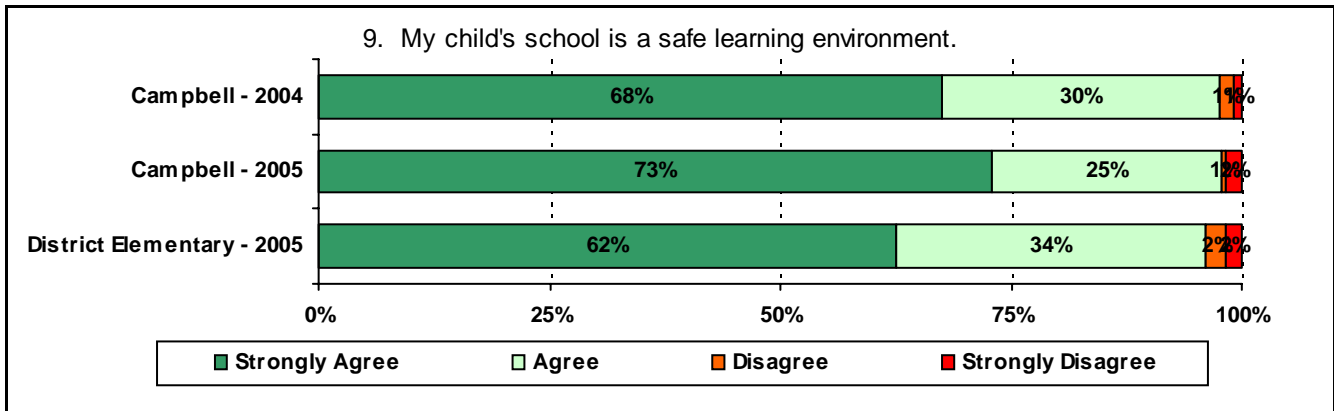
Please examine your results to determine areas of strength and opportunities for improvement. Areas of strength can be identified by large percentages of parents who "Strongly Agree" or "Agree" with a statement. Opportunities for improvement can be identified by large percentages of parents who "Disagree" or "Strongly Disagree" with a statement. In addition, please look for patterns in which one staff category consistently receives more positive or negative responses than other staff categories. This will help you to identify opportunities for praise and areas in which training may be necessary. District responses for all schools at your level are also provided for comparison with 2005-2006 responses from your school. If your campus percentages are very different from the percentages reported by parents





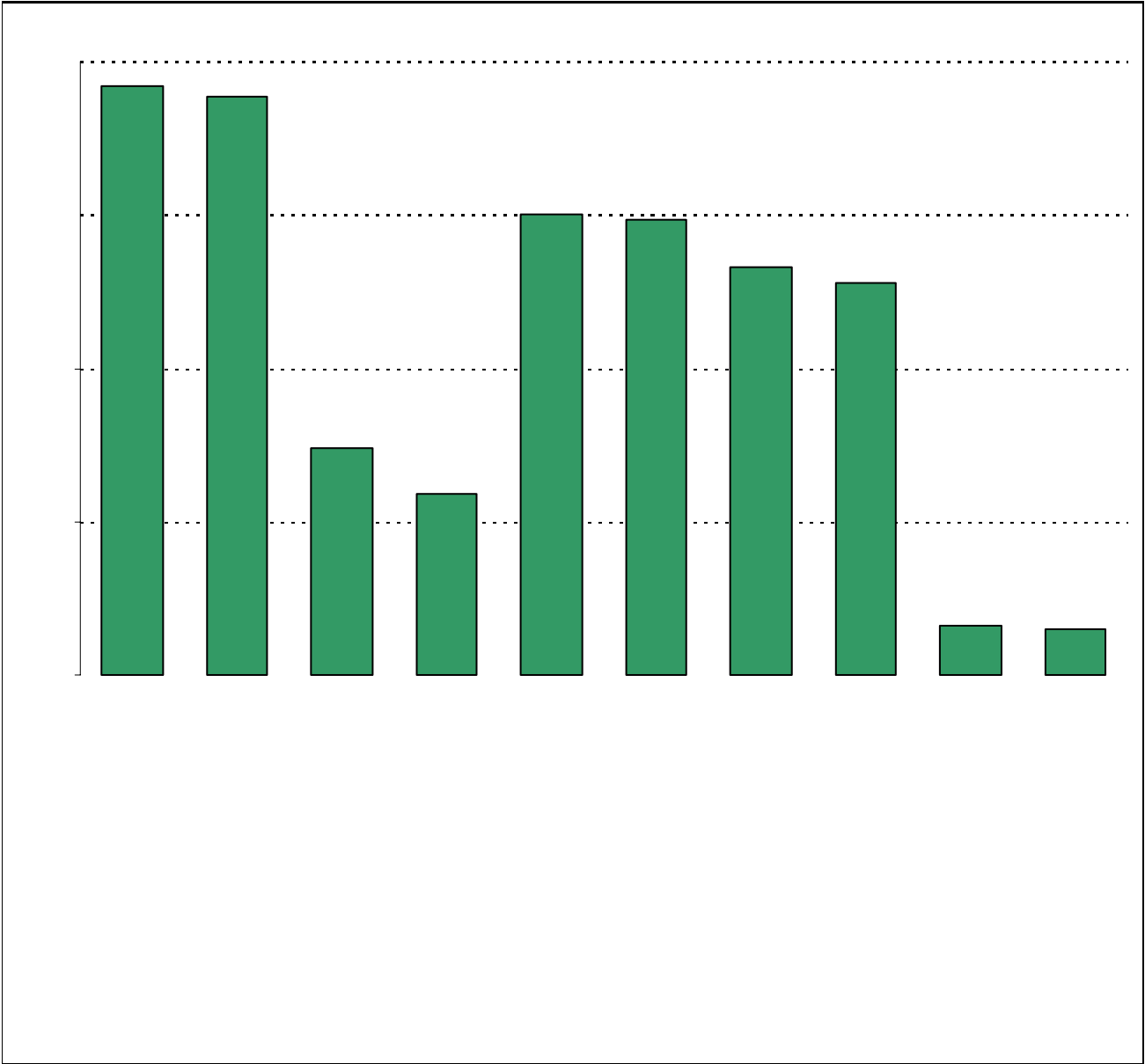


* The "Other" category was added to the survey in 2005.



.....





Item Response Details

Number of Campbell Elementary School Parent Responses, by Response Option

		Strongly Agree	Agree	Disagree	Strongly Disagree	Don't Know/NA
4a.	n = 185	129	39	0	4	13
4b.	n = 183	124	37	0	3	19
4c.	n = 182	76	40	0	3	63
4d.	n = 184	101	69	6	4	4
4e.	n = 186	127	52	1	3	3
5a.	n = 184	106	60	0	4	14
5b.	n = 183	99	57	1	5	21
5c.	n = 179	62	49	1	6	61
5d.	n = 182	88	68	5	4	17
5e.	n = 185	114	61	2	4	4
6a.	n = 185	101	54	3	3	24
6b.	n = 183	92	56	3	3	29
6c.	n = 179	59	46	1	4	69
6d.	n = 183	75	61	6	4	37
6e.	n = 184	123	52	0	2	7
7a.	n = 183	94	62	0	4	23
7b.	n = 183	93	54	1	3	32
7c.	n = 179	53	53	2	2	69
7d.	n = 182	73	60	4	5	40
7e.	n = 186	108	60	2	3	13
8a.	n = 179	117	51	0	2	9
8b.	n = 179	109	52	2	1	15
8c.	n = 177	71	52	0	1	53
8d.	n = 176	91	63	2	3	17
8e.	n = 179	113	56	1	3	6
8f.	n = 177	102	48	8	6	0
9.	n = 183	130	44	1	3	5
10.	n = 180	119	53	1	3	4

Number of Campbell Elementary School Parent Responses, by Response Option ((C12 ref413.2(3)-5101.8(6)TE

		Strongly Agree	Agree	Disagree	Strongly Disagree	Don't Know/NA
11a.	n = 180	104	59	1	4	12
11b.	n = 181	113	56	1	3	8
11c.	n = 181	115	56	2	4	4
11d.	n = 178	113	57	1	3	4
11e.	n = 181	108	61	3	3	6
11f.	n = 180	114	58	1	3	4
11i.	n = 168	90	40	3	3	32
		72	55	9	4	41
12b.	n = 180	63	56	4	4	53
12c.	n = 181	86	61	6	6	22
12d.	n = 181	90	60	3	7	20
13a.	n = 181	123	48	1	3	6
13b.	n = 178	88	56	5	4	25
13c.	n = 177	89	47	4	4	33
13d.	n = 180	96	51	2	5	26
13e.	n = 179	121	50	1	4	3