



2006-2007 AISD Parent Survey Results

Brown Elementary School

The following report contains the results of the 2006-2007 AISD Parent Survey for your campus and all AISD schools at your level. The first section of this report provides a comparison of the campus demographics and the demographics reported by parents who responded to the survey from your campus. The next section describes the percentages of

How many parents responded to the survey in 2005-2006 and 2006-2007, and how does this compare to the number of students in the population each year?

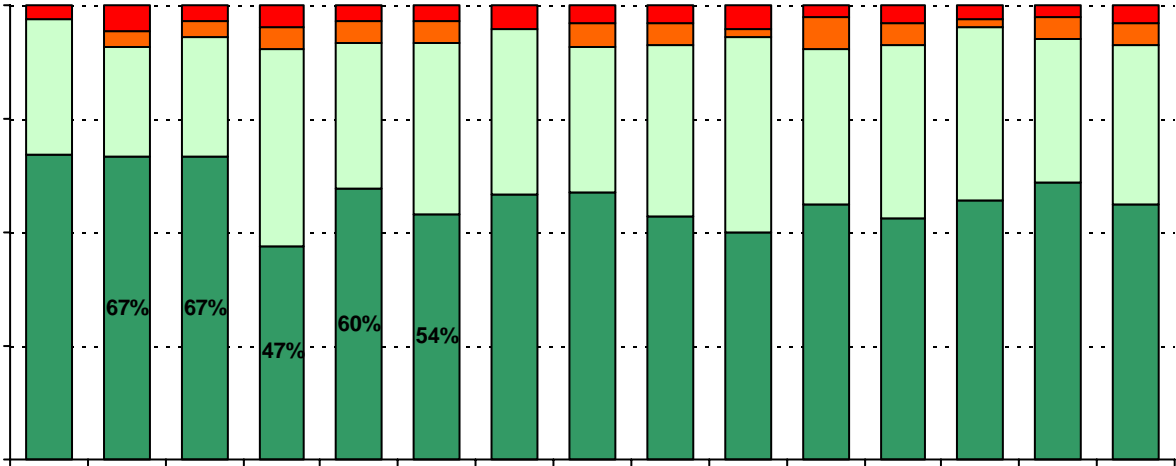
	Campus	District EL	District MS	District HS
	88			
	513			
	<i>17.2%</i>			
	98			
	525			
	<i>18.7%</i>			

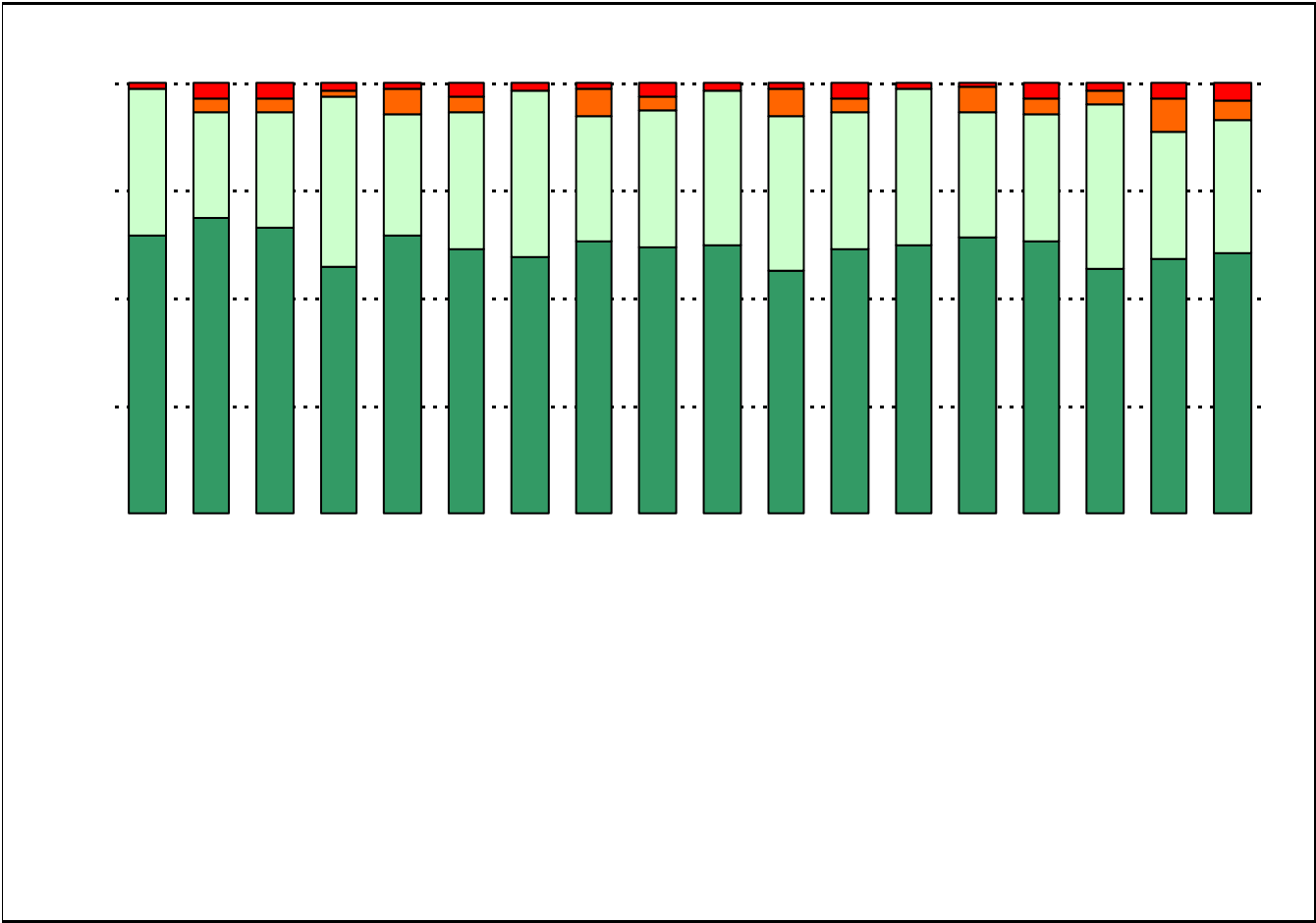
What did parents report as their child's ethnicity, and how does this compare to the ethnic distribution of the student population?

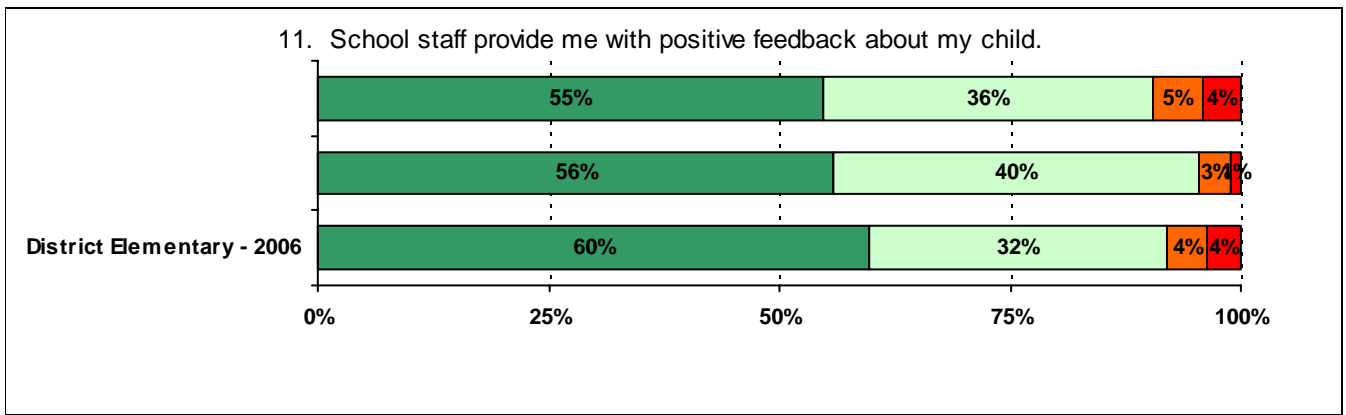
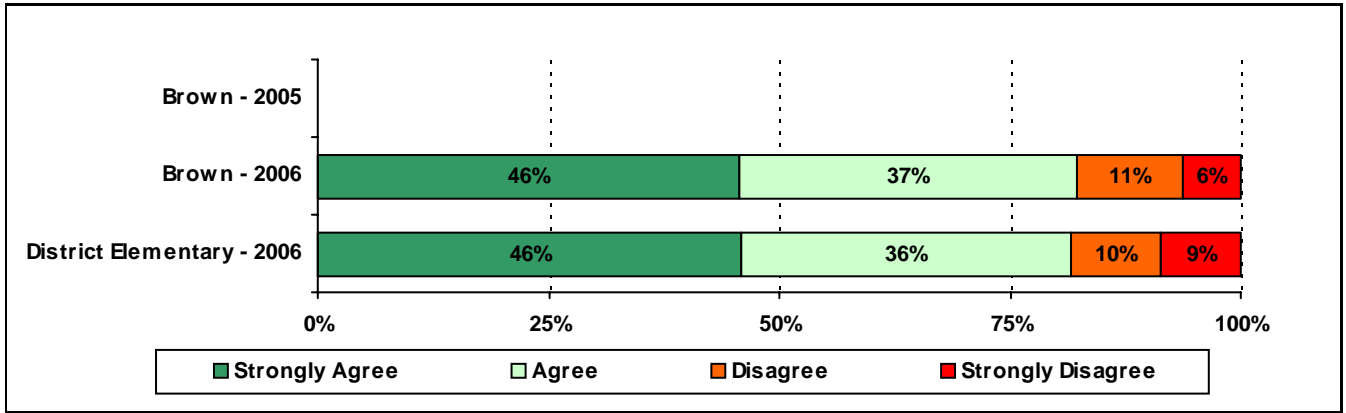
Ethnicity	% of Students, as Reported by Campus Parent Respondents	% of Students in Campus Population
Asian	8.9%	1.0%
Hispanic	82.3%	89.5%
Native American	0.0%	0.2%
White	5.1%	3.2%

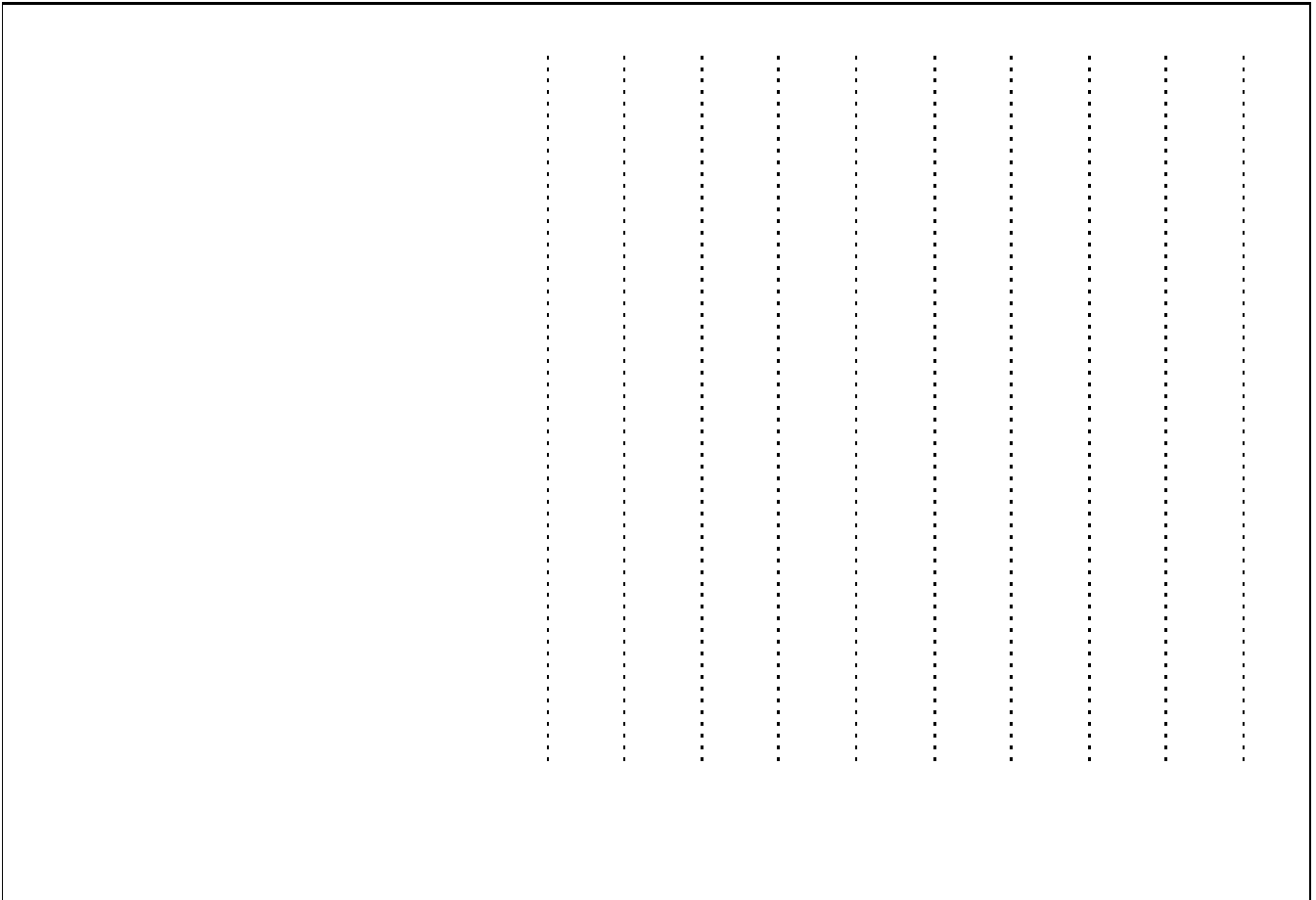
USING THE R

6. The following school staff provide me with opportunities for two-way communication.



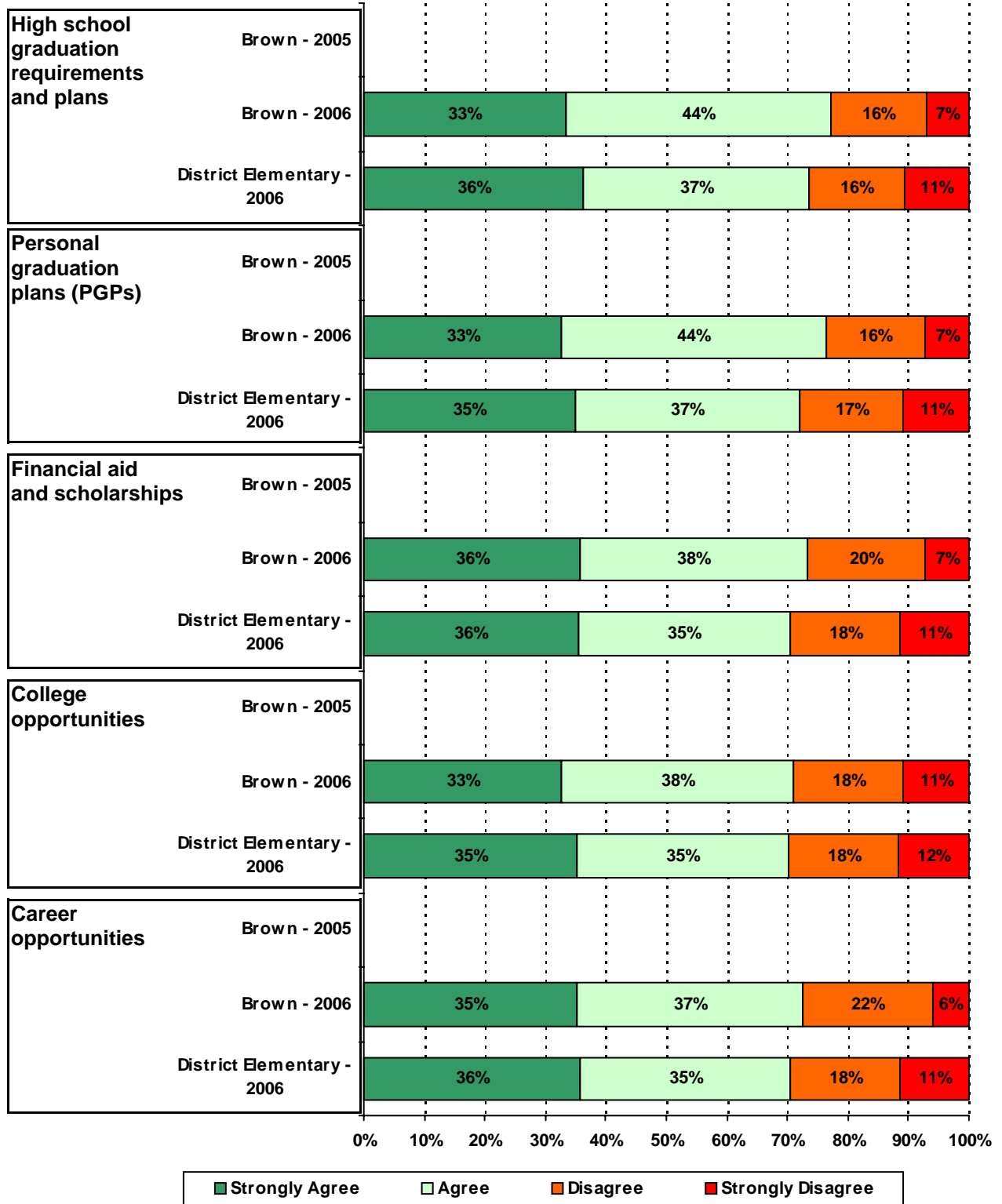


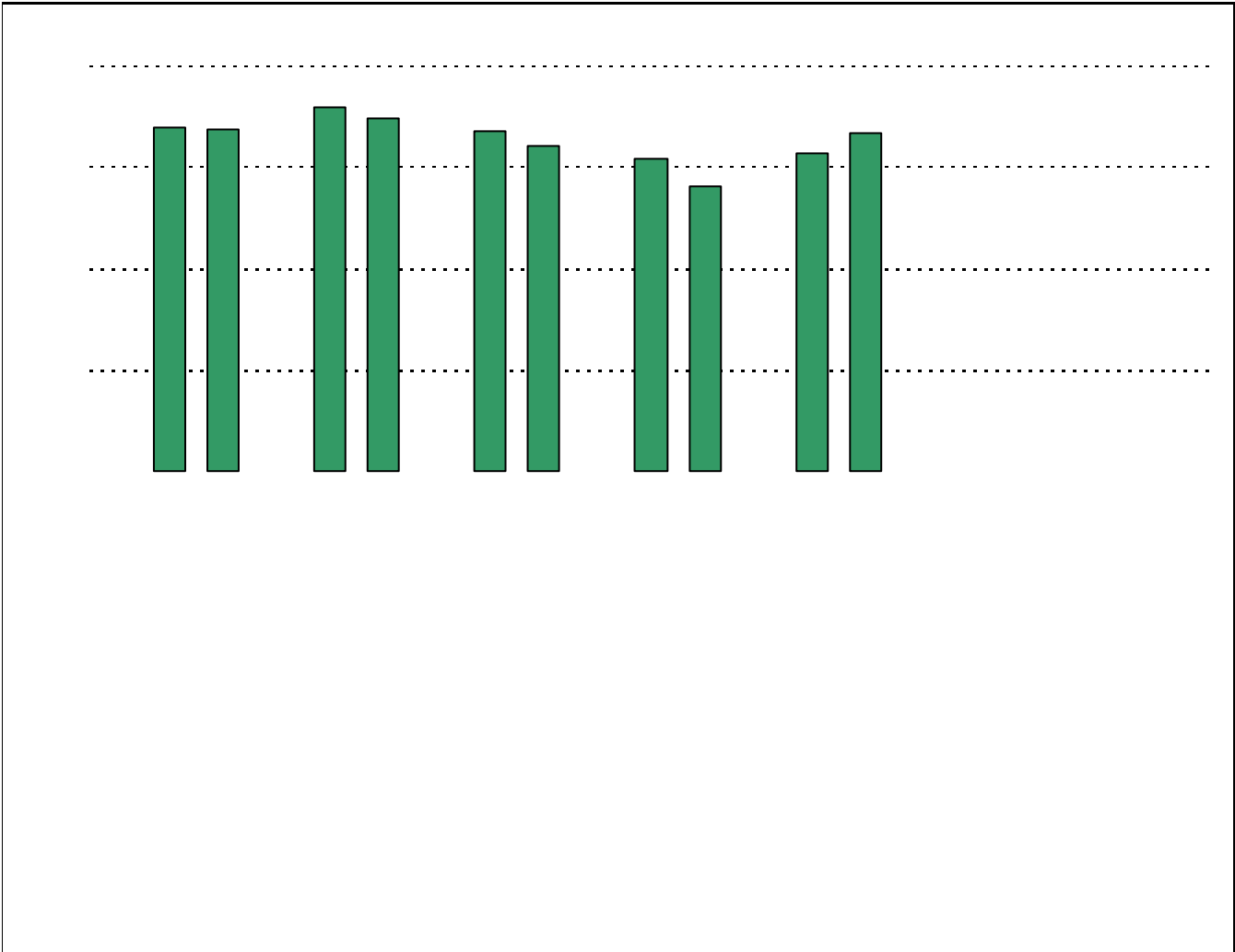




**Required
curriculum**

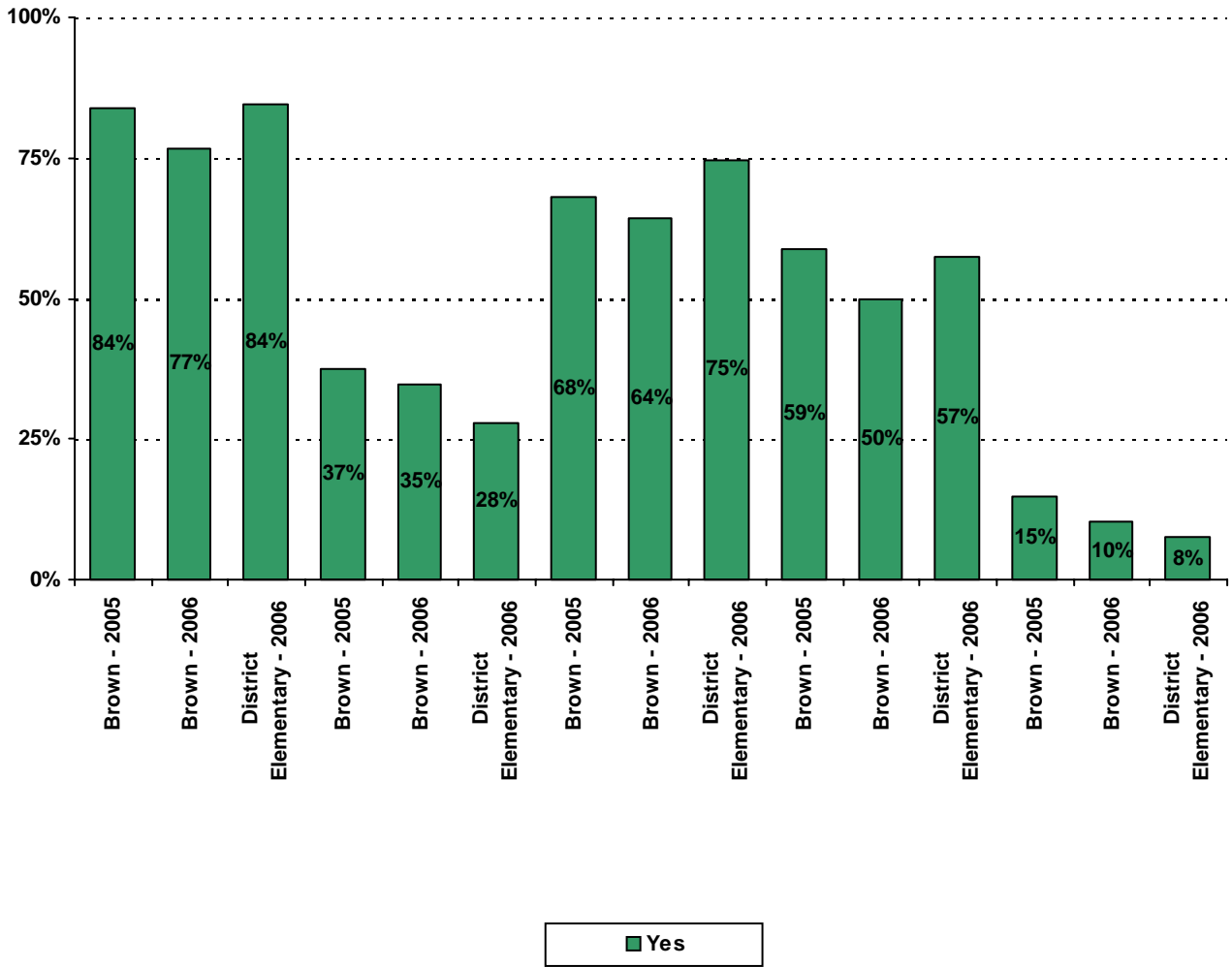
16. School staff provide me with useful information about the following graduation and post-graduation topic





* Item(s) #17, #18, #19 added to the survey in 2006

20. My goals for my child include the following plans:



Item Response Details

Number of Brown Elementary School Parent Responses, by Response Option

		Strongly Agree	Agree	Disagree	Strongly Disagree	Don't Know/NA
4.	n = 64		6	58		
5a.	n = 90	58	18	5	4	5
5b.	n = 84	47	22	6	2	7
5c.	n = 83	53	14	6	3	7
5d.	n = 84	54	21	4	2	3
5e.	n = 89	58	22	4	4	1
6a.	n = 85	48	25	4	2	6
6b.	n = 81	41	25	5	2	8
6c.	n = 83	44	24	4	3	8
6d.	n = 85	49	26	4	3	3
6e.	n = 88	58	21	3	5	1
7a.	n = 84	43	30	4	3	4
7b.	n = 80	39	24	7	3	7
7c.	n = 80	42	21	6	1	10
7d.	n = 79	40	26	4	2	7
7e.	n = 91	59	25	3	3	1
8a.	n = 82	43	25	4	1	9
8b.	n = 79	37	24	5	2	11
8c.	n = 84	41	24	5	2	12
8d.	n = 80	39	23	5	2	11
8e.	n = 87	51	22	4	4	6
9a.	n = 90	57	26	5	1	1
9b.	n = 83	44	28	5	1	5
9c.	n = 83	50	23	5	1	4
9d.	n = 83	53	23	5	1	1
9e.	n = 86	59	21	3	3	0
9f.	n = 81	46	23	6	3	3
10.	n = 91	36	29	9	5	12
11.	n = 86	48	34	3	1	0
12.	n = 80	44	30	5	0	1

Number of Brown Elementary School Parent Responses, by Response Option
(Continued)

		Strongly Agree	Agree	Disagree	Strongly Disagree	Don't Know/NA
13a.	n = 91	50	34	5	1	1
13b.	n = 86	48	31	5	0	2
13c.	n = 82	42	30	7	1	2
14a.	n = 84	37	34	6	1	6
14b.	n = 86	48	28	6	1	3
14c.	n = 88	46	33	5	2	2
15a.	n = 93	60	28	3	1	1
15b.	n = 93	45	32	4	5	7
15c.	n = 89	45	33	5	0	6
15d.	n = 90	43	37	3	1	6
15e.	n = 87	49	33	3	1	1
16a.	n = 85	19	25	9	4	28
16b.	n = 85	18	24	9	4	30
16c.	n = 84	20	21	11	4	28
16d.	n = 82	18	21	10	6	27
16e.	n = 80	18	19	11	3	29
17.	n = 93	55	26	9	2	1
18.	n = 92	55	31	3	2	1
		Yes	No			
19a.	n = 85	65	20			
19b.	n = 86	77	9			
19c.	n = 81	61	20			
19d.	n = 83	56	27			
19e.	n = 83	58	25			
19f.	n = 84	64	17			
19g.	n = 84	65	19			
20.	n = 98	<p><i>Item 20 did not use the "Strongly Agree" to "Strongly Disagree" scale. Numbers below reflect the number of parents selecting each goal. These numbers will not sum to the total number of item respondents because parents may select multiple goals.</i></p>				
		High School diploma	Certificate/ Associates degree	Bachelors degree	Graduate/ Professional degree	Military service
		75	34	63	49	10