

Brooke Elementary School

How many parents responded to the survey in 2004-2005 and 2005-2006, and how does this compare to the number of students in the population each year?

	Campus	District EL	District MS	District HS
# of Parents Responding in 2004-2005	94	12,137	2,007	2,700
# of Students in 2004-2005	356	43,566	15,705	19,976
# of Parents Responding in 2005-2006	123	10,900	1,801	2,085
# of Students in 2005-2006	371	44,827	15,624	20,081

Note: The ratio of parent respondents to students is listed above as a percentage for ease of interpretation; however, it is the number of parents who responded per 100 students enrolled.

	% of Students, as Reported by Campus Parent Respondents	% of Students in Campus Population
African American		11.9%
Asian		1.3%
Hispanic		82.7%
Native American		0.0%
White		4.6%

of the 2005-2006 AISD Parent Survey campus and all AISD schools at your level. The first section of this report provides a comparison of the campus demographics and the demographics reported by parents who responded to the survey from your campus. The next section describes the percentage of parents selecting specific response options for each survey item, and the final section provides the actual number of parents who selected each response option. Campus survey results are examined for areas of strength and opportunities for improvement. Results for your campus are compared to results for schools at your level and results for your campus from 2004-2005 are presented for reference for comparison.

What did parents report as their child's grade, and how does this compare to the grade level distribution of the student population?

Grade	% of Students, as Reported by Campus Parent Respondents	% of Students in Campus Population
EC	0.0%	0.8%
PK	1.2%	13.5%
K	0.0%	19.4%
1st	14.1%	13.2%
2nd	18.8%	13.5%
3rd	29.4%	14.3%
4th	12.9%	10.2%
5th	23.5%	15.1%
6th	N/A	N/A

Note: Student population data are based on Fall PEIMS data submitted by the district to TEA, and may differ from the official AEIS report.

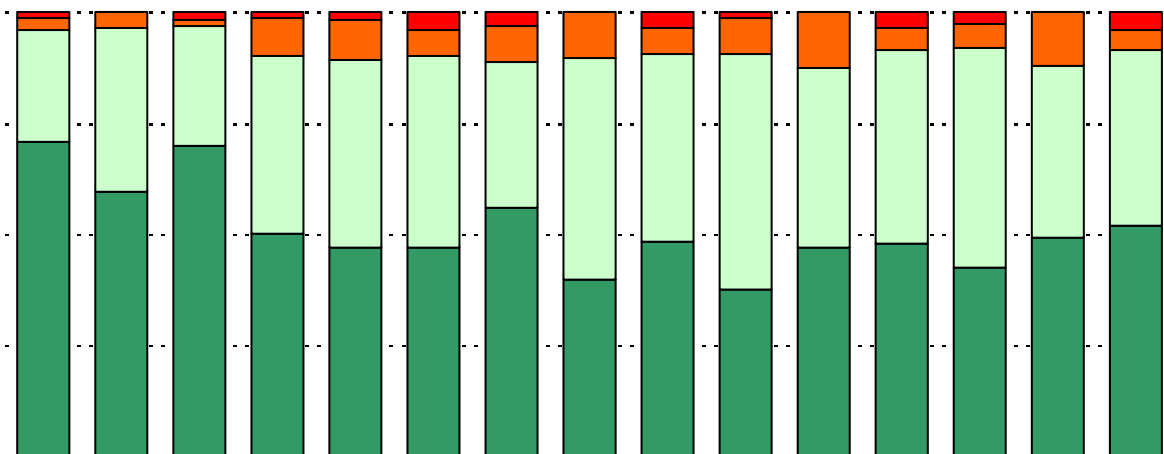
USING THE RESULTS OF THE AISD PARENT SURVEY

Each survey item is presented below, followed by a bar graph containing your school's results for two years and this year's results for all campuses at your level. You will be able to identify areas in which your school's results have changed over time, and you will be able to compare the responses of your school's parents to those of parents at your level district-wide.

Please examine your results to determine areas of strength and opportunities for improvement. Areas of strength can be identified by large percentages of parents who "Strongly Agree" or "Agree" with a statement. Opportunities for improvement can be identified by large percentages of parents who "Disagree" or "Strongly Disagree" with a statement. In addition, please look for patterns in which one staff category consistently receives more positive or negative responses than other staff categories. This will help you to identify opportunities for praise and areas in which training may be necessary. District responses for all schools at your level are also provided for comparison with 2005-2006 responses from your school. If your campus percentages are very different from the percentages reported by parents district-wide, please consider potential reasons for discrepancies.

With the longitudinal data that are provided, where available, look at the responses from year to year to determine whether there are any areas in which percentages have changed by more than a few percentage points. Think about any changes in campus policies and practices that may have resulted in these positive or negative changes. Also, think about ways your campus staff can continue to support the positive changes and how your staff might address any undesirable changes that may have occurred. Because parental perceptions of treatment by school personnel are based on interactions with a variety of school staff, representatives from all areas should be included in discussions regarding school planning and improvement processes.

A rectangular box with a solid black border, containing four horizontal dotted lines. The lines are evenly spaced and extend across most of the width of the box, providing a guide for handwriting practice.

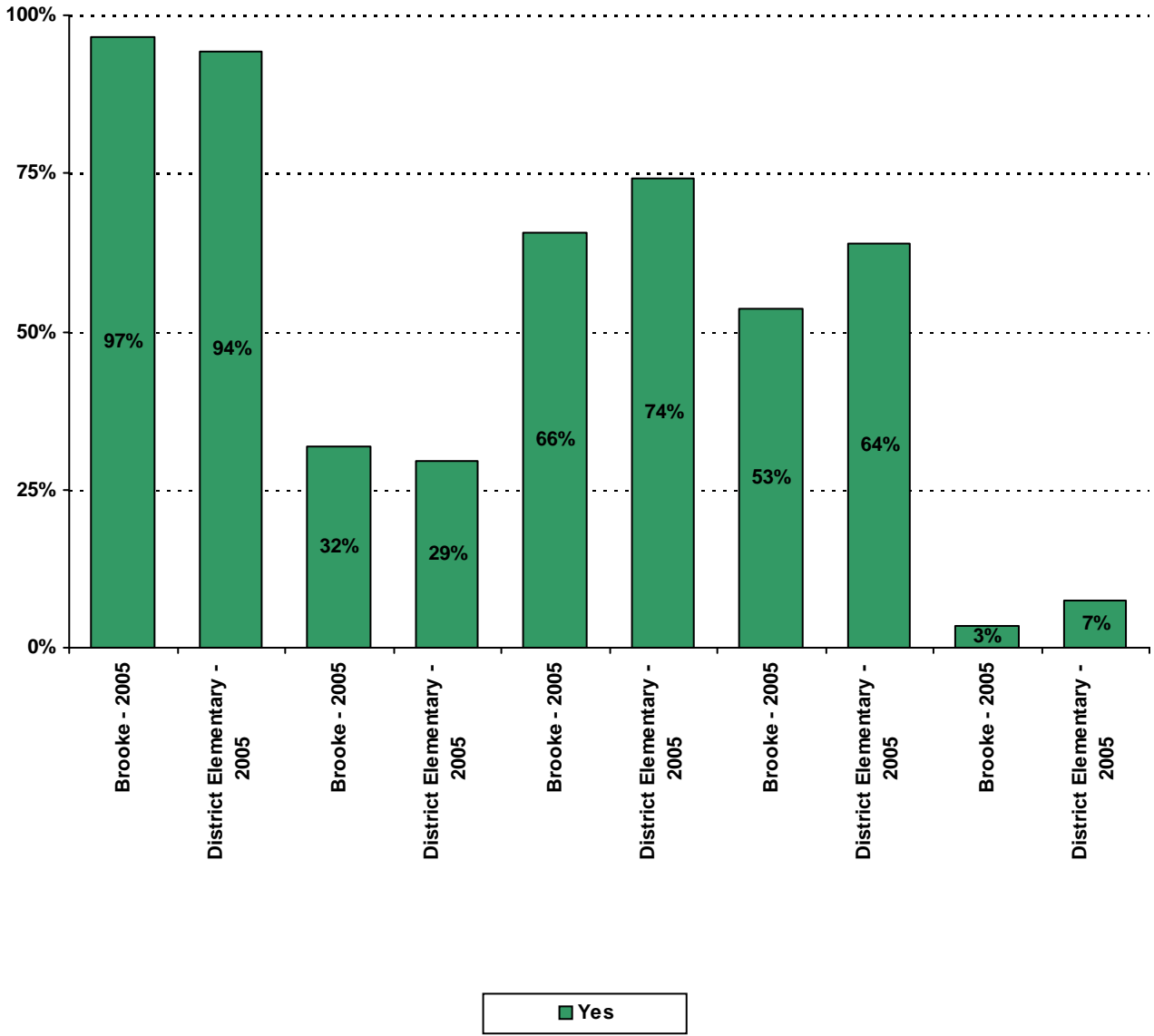


.....



Required

14. My goals for my child include the following plans*:



Item Response Details

Number of Brooke Elementary School Parent Responses, by Response Option

		Strongly Agree	Agree	Disagree	Strongly Disagree	Don't Know/NA
3a.	n = 120	55	49	2	5	9
3b.	n = 116	51	51	3	2	9
3c.	n = 114	41	50	2	1	20
3d.	n = 118	58	55	3	1	1
3e.	n = 117	67	48	2	0	0
5a.	n = 118	46	53	3	2	14
5b.	n = 114	45	51	3	0	15
5c.	n = 113	39	46	3	2	23
5d.	n = 115	56	49	2	2	6
5e.	n = 116	68	44	3	0	1
6a.	n = 115	49	39	12	0	15
6b.	n = 110	44	38	12	0	16
6c.	n = 111	34	43	9	0	25
		47	42	9		ponse Details

11a.	n = 116	66	44	1	0	5
11b.	n = 114	67	46	1	0	0
11c.	n = 113	64	45	2	1	1
11d.	n = 115	63	48	2	0	2