

How many parents responded to the survey in 2005-2006 and 2006-2007, and how does this compare to the number of students in the population each year?

	% of Students, as Reported by Campus Parent Respondents	Campus % of Students in	District EL	District MS	District HS
White		41.6%			

What did parents report as their child's grade, and how does this compare to the grade level distribution of the student population?

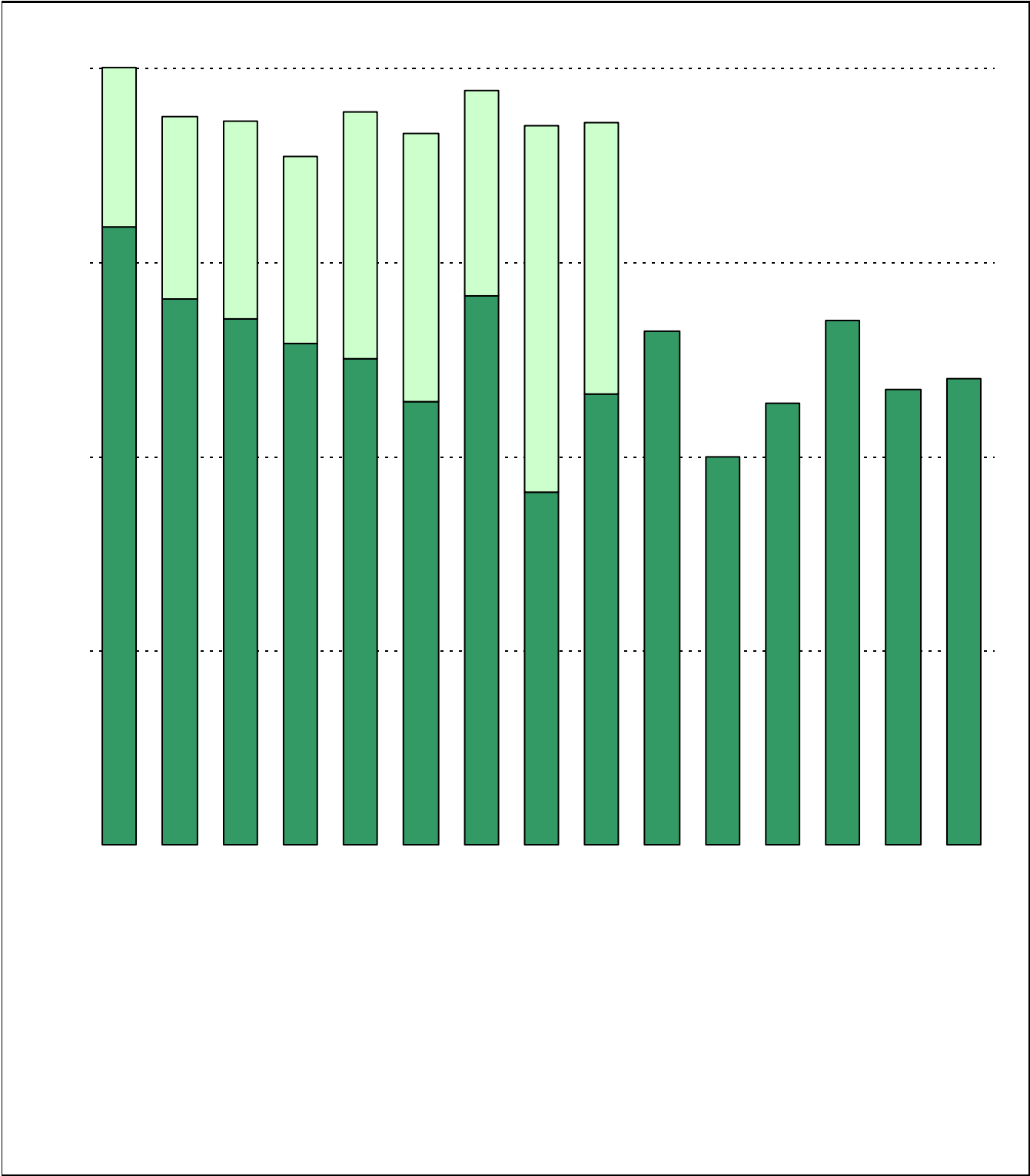
Grade	% of Students, as Reported by Campus Parent Respondents	% of Students in Campus Population
EC	1.2%	1.7%
PK	9.4%	8.0%
K	14.1%	19.4%
1st	11.8%	15.0%
2nd	16.5%	15.7%
3rd	16.5%	13.8%
4th	12.9%	13.1%
5th	17.6%	13.3%
6th	N/A	N/A

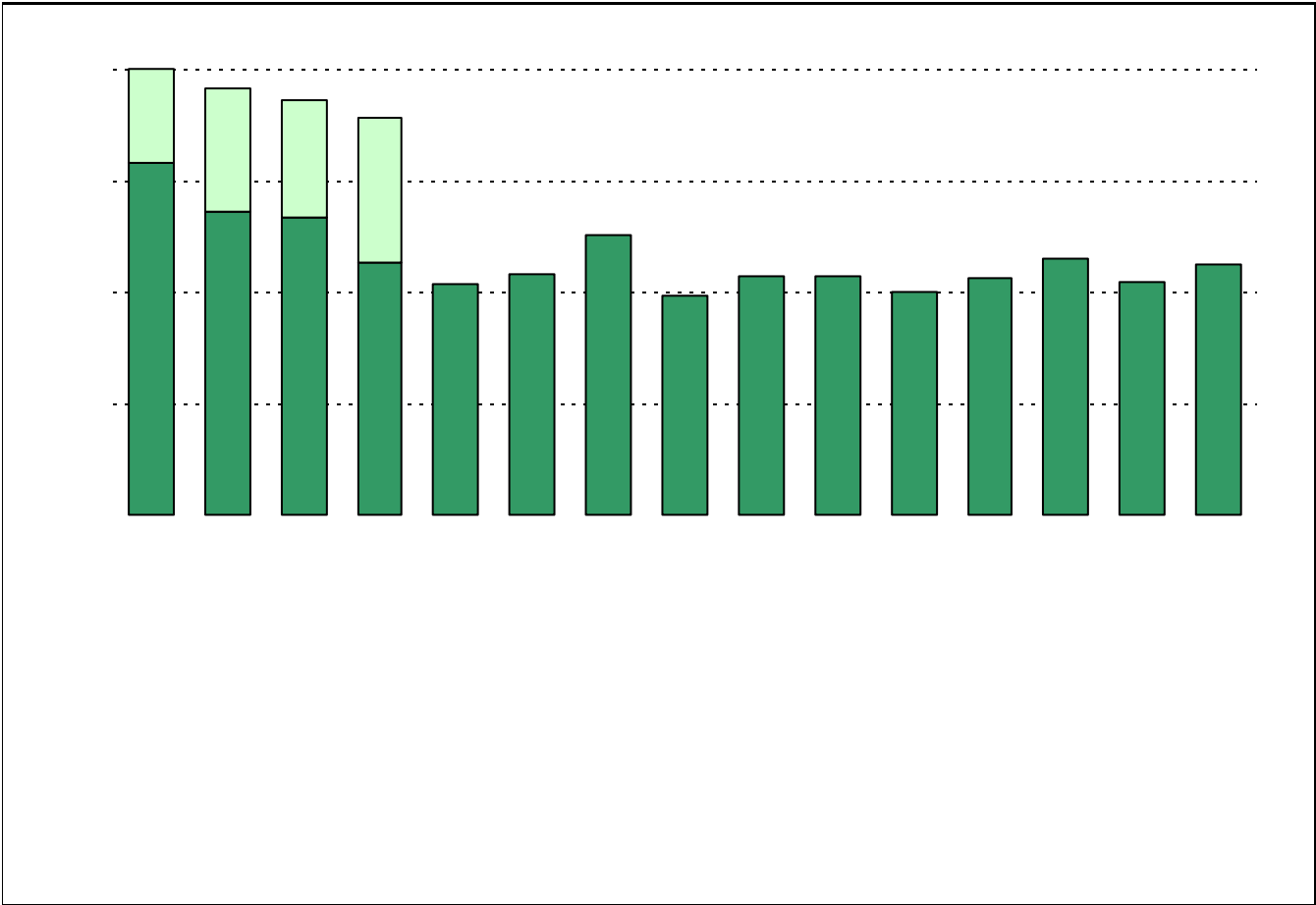
Note: Student population data are based on Fall PEIMS data submitted by the district to TEA, and may differ from the official AEIS report.

USING THE RESULTS OF THE AISD PARENT SURVEY

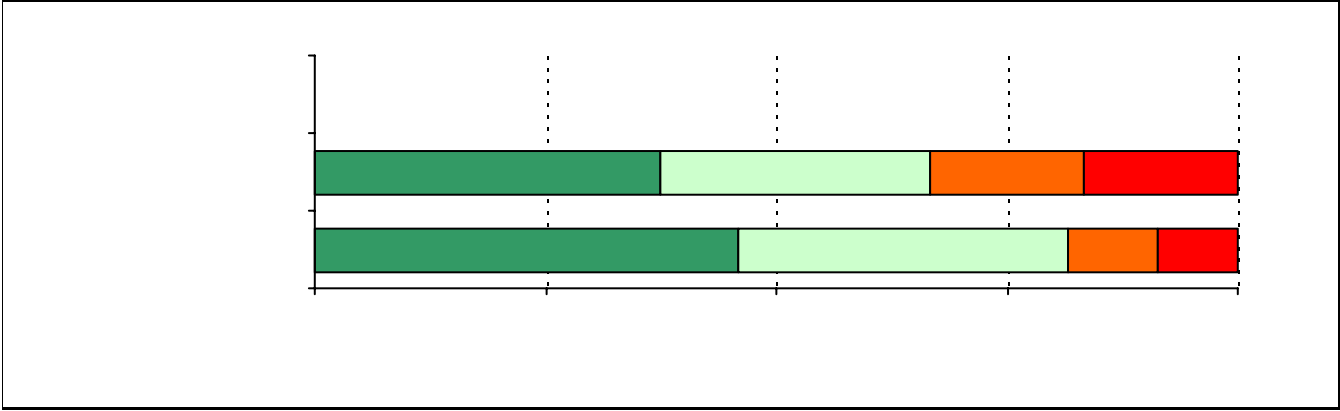
Each survey item is presented below, followed by a bar graph containing your school's results for two years and this year's results for all campuses at your level. You will be able to identify areas in which your school's results have changed over time, and you will be able to compare the responses of your school's parents to those of parents at your level district-wide.

Please examine your results to determine areas of strength and opportunities for improvement. Areas of strength can be identified by large percentages of parents who "Strongly Agree" or "Agree" with a statement. Opportunities for improvement can be identified by large percentages of



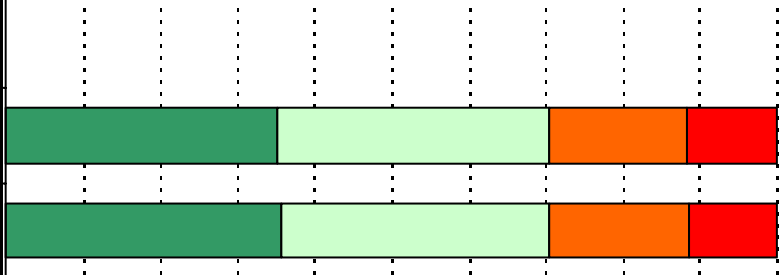
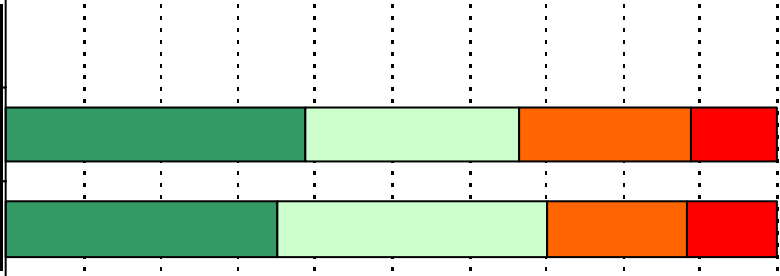
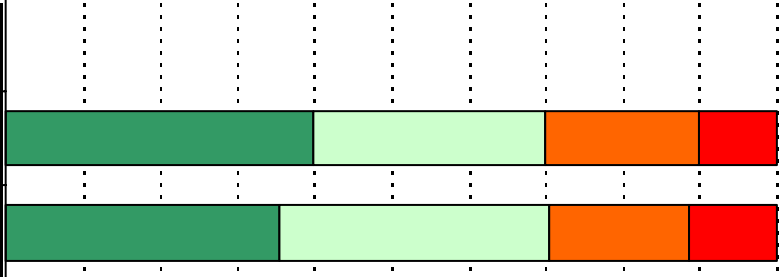
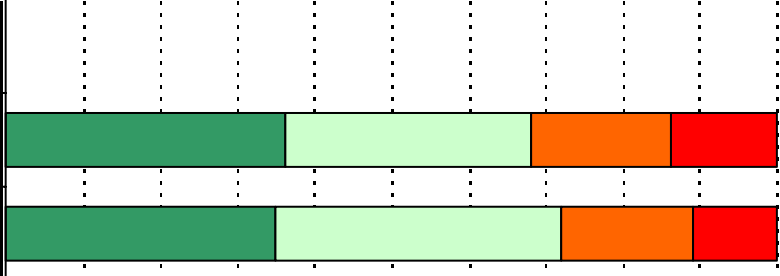
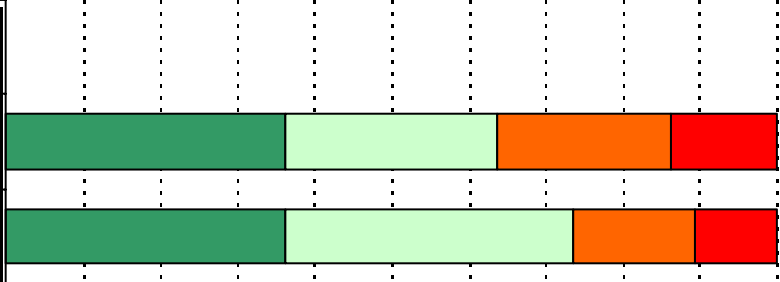


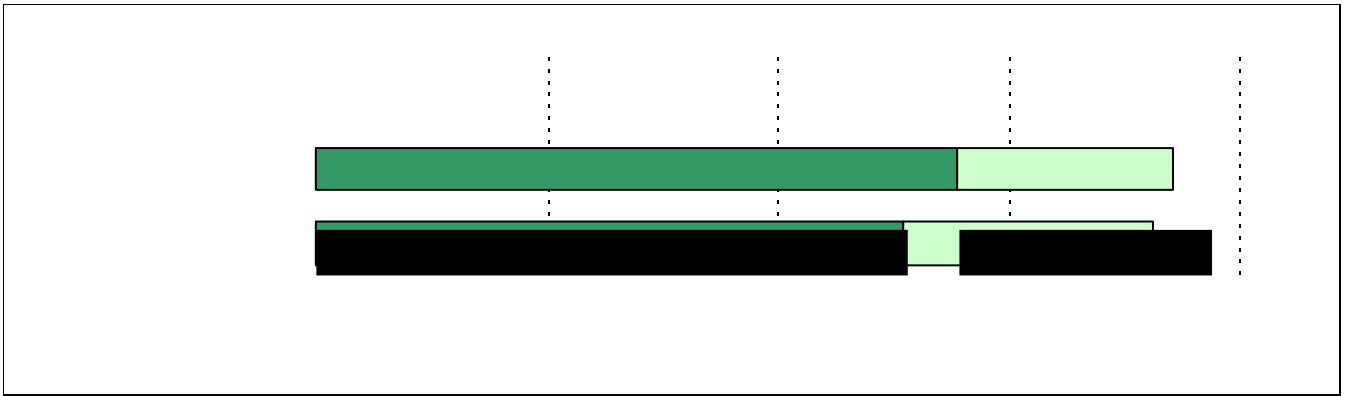
A rectangular box with a solid black border, containing four horizontal dotted lines. The lines are evenly spaced and extend across most of the width of the box, providing a template for writing.



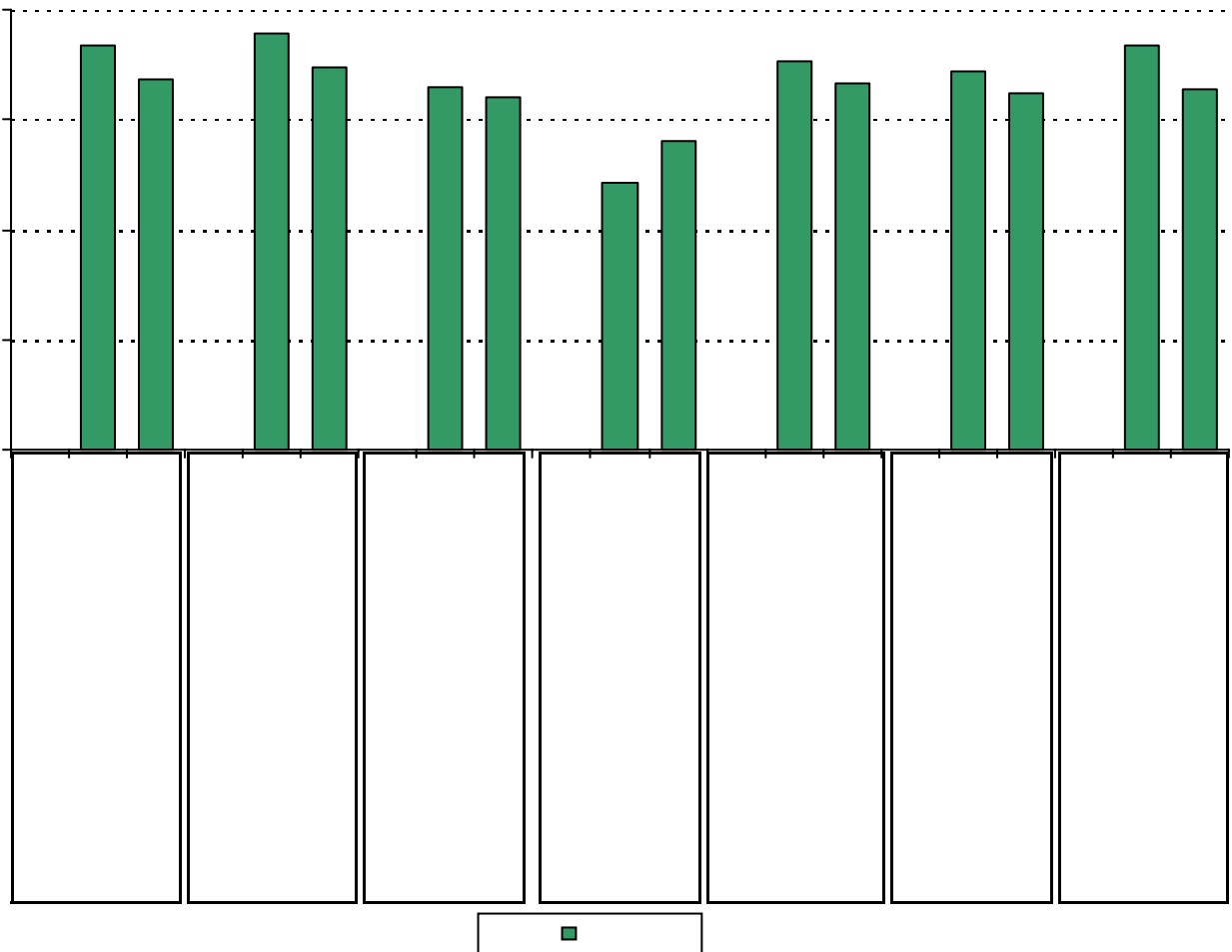


16. School staff provide me with useful information about the following graduation and post-graduation topic





19. Which of the following activities do you participate in at your child's school:*



* Item(s) #17, #18, #19 added to the survey in 2006

Item Response Details

Number of Brentwood Elementary School Parent Responses, by Response Option

		Strongly Agree	Agree	Disagree	Strongly Disagree	Don't Know/NA
4.	n = 77		3	74		
5a.	n = 94	51	30	2	4	7
5b.	n = 94	32	25	2	5	30
5c.	n = 92	30	31	3	2	26
5d.	n = 95	55	28	2	3	7
5e.	n = 96	66	22	2	4	2
6a.	n = 91	39	30	2	4	16
6b.	n = 90	28	24	1	3	34
6c.	n = 91	31	28	2	2	28
6d.	n = 91	41	34	2	2	12
6e.	n = 92	60	24	0	4	4
7a.	n = 89	36	30	4	3	16
7b.	n = 88	19	22	3	3	41
7c.	n = 87	24	25	2	1	35
7d.	n = 88	27	29	2	2	28
7e.	n = 96	61	23	2	5	5
8a.	n = 90	36	23	2	6	23
8b.	n = 88	22	17	3	3	43
8c.	n = 88	27	19	3	1	38
8d.	n = 90	27	22	5	1	35
8e.	n = 91	58	17	5	5	6
9a.	n = 94	50	27	4	4	9
9b.	n = 92	40	20	3	6	23
9c.	n = 94	43	18	5	3	25
9d.	n = 92	46	26	4	5	11
9e.	n = 93	59	23	2	5	4
9f.	n = 93	46	28	4	4	11
10.	n = 89	18	14	8	8	41
11.	n = 92	54	25	4	5	4
12.	n = 93	56	27	5	4	1

Number of Brentwood Elementary School Parent Responses, by Response Option
(Continued)

		Strongly Agree	Agree	Disagree	Strongly Disagree	Don't Know/NA
13a.	n = 93	47	36	4	4	2
13b.	n = 93	44	36	4	5	4
13c.	n = 92	40	29	9	7	7
14a.	n = 90	27	26	10	9	18
14b.	n = 92	50	29	3	4	6
14c.	n = 93	32	25	11	7	18
15a.	n = 95	61	25	3	4	2
15b.	n = 90	43	27	4	4	12
15c.	n = 92	42	22	3	4	21
15d.	n = 93	39	28	5	3	18
15e.	n = 95	56	27	6	5	1
20.	n = 97	Item 20 did not use the "Strongly Agree" to "Strongly Disagree" response options. n = 97. Two items were used: 100% Strongly Agree, 100% Strongly Disagree.				