

RESULTS OF THE AISD HIGH

	Percentage of Enrolled Seniors Responding ²			
	Class of 2004	Class of 2005	Class of 2006	Class of 2007
BOWIE	94.5%	100.0%	94.6%	92.8%
ALL HIGH SCHOOLS	81.5%	85.3%	86.0%	82.0%

INDIVIDUAL ITEM RESPONSES FOR BOWIE HIGH SCHOOL

Results for your campus and all High Schools are presented below. Please use these data to identify trends in the responses of your seniors over time, and to examine how your campus results compare to the results for All High Schools.

¹ Previous years' data not available for items indicated with **.

² Corrected response rate for All High Schools in 2007 is 87.0%. Please see Appendix for detailed information about campus response rates for 2007. Response rates are based on enrollment during the 6th six weeks reporting period.

Item 1. *What is the ONE thing that you especially want the administration of AISD to know.*

Themes from this open-ended comment section have been identified and summarized each year. Generally, comments remain consistent from year to year; commonly identified themes expressed by the Class of 2007 include:

- **Respect.** Students continued to express a desire to be treated with respect and fairness by school staff, including administrators, office/attendance staff, hall monitors, security and parking lot personnel. Many felt that they were treated with suspicion and disrespect as a result of the behavior of other students. Students also were concerned that some rules (e.g., parking, dress code, off-campus lunch) were enforced inconsistently.
- **Academics.** Many students wished they had been told about the importance of good grades and rigorous coursework starting as early as middle school. They also questioned the quality of instruction during High school. Students stressres

Item 2. I

t

e

m

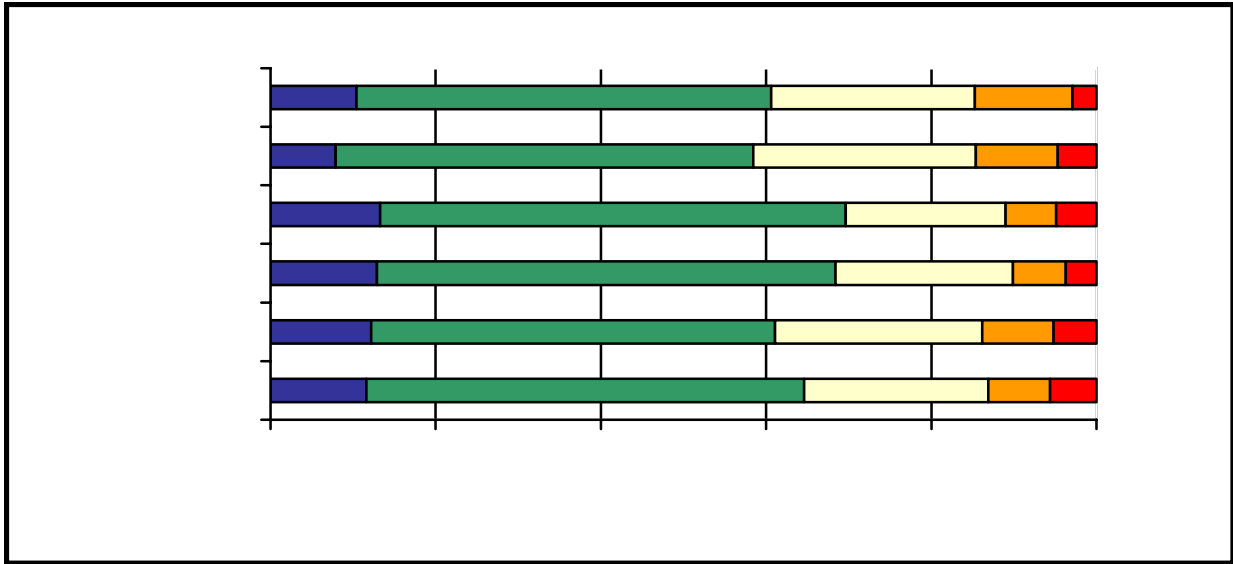
Item 7. In which of the following activities did you participate outside of school during your senior year?

Activity	2004-2005	2005-2006	2006-2007
----------	-----------	-----------	-----------

Item 8. *Here is a list of community organizations found in and around Austin. Please indicate which of them, if any, you have participated in while in High School.*

Organization	AKINS	ANDERSON	AUSTIN	BOWIE	CROCKETT	GARZA
--------------	-------	----------	--------	-------	----------	-------

Item 9. *Thinking back on your years in high school, how many hours per week did you typically spend studying, doing research, or completing homework assignments OUTSIDE of class?*



Item 11. How well did your high school help you to further develop knowledge and skills in the following areas?

	2004-2005		2005-2006		2006-2007	
	ALL HS	BOWIE	ALL HS	BOWIE	ALL HS	BOWIE
Creative Thinking	2.4	2.3	2.4	2.3	2.3	2.2
Problem Solving	2.4	2.4	2.3	2.2	2.3	2.3
Conflict Resolution	2.2	2.2	2.0	1.9	2.2	2.1
Personal Health/Fitness	2.2	2.2	2.0	1.9	2.1	2.0
Composite Score	2.3	2.3	2.2	2.1	2.2	3.0

Note: Responses can range from 1 (not well) to 3 (very well).

Item 12. Please rate the quality of instruction that you feel that you received in the following areas:

	2005-2006		2006-2007	
	ALL HS	BOWIE	ALL HS	BOWIE

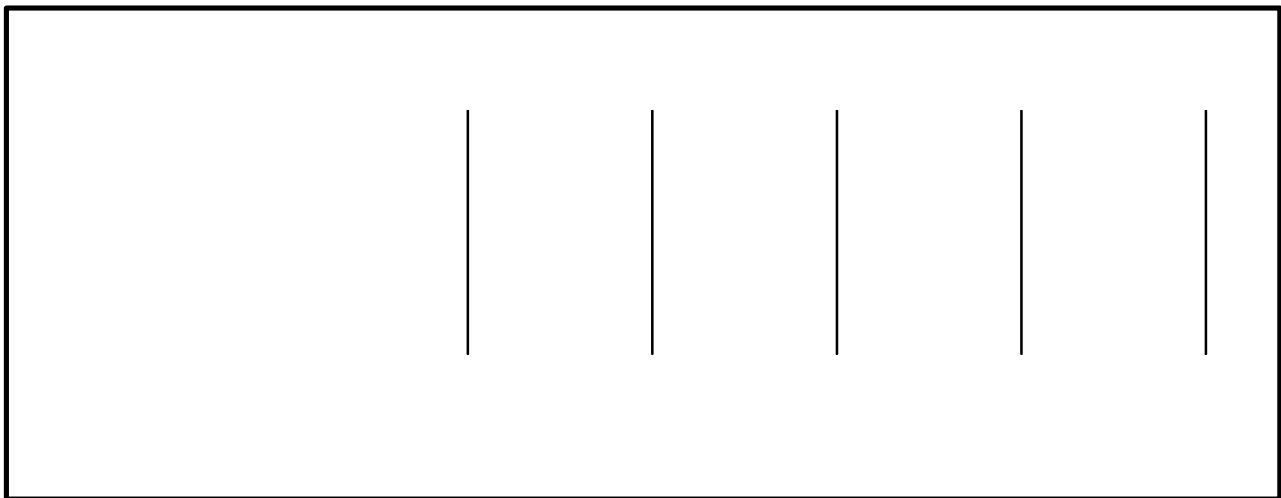
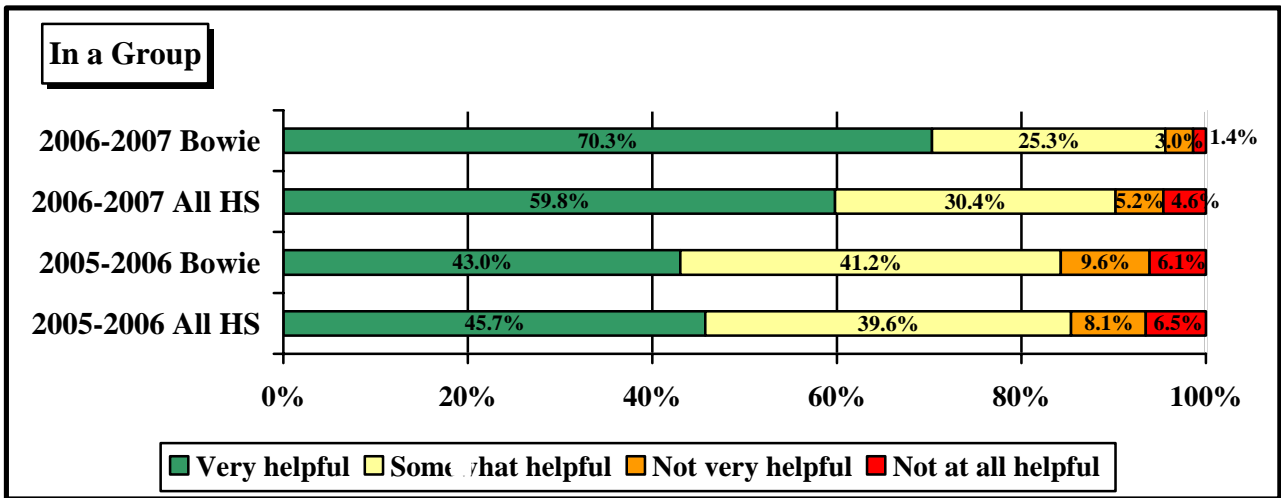
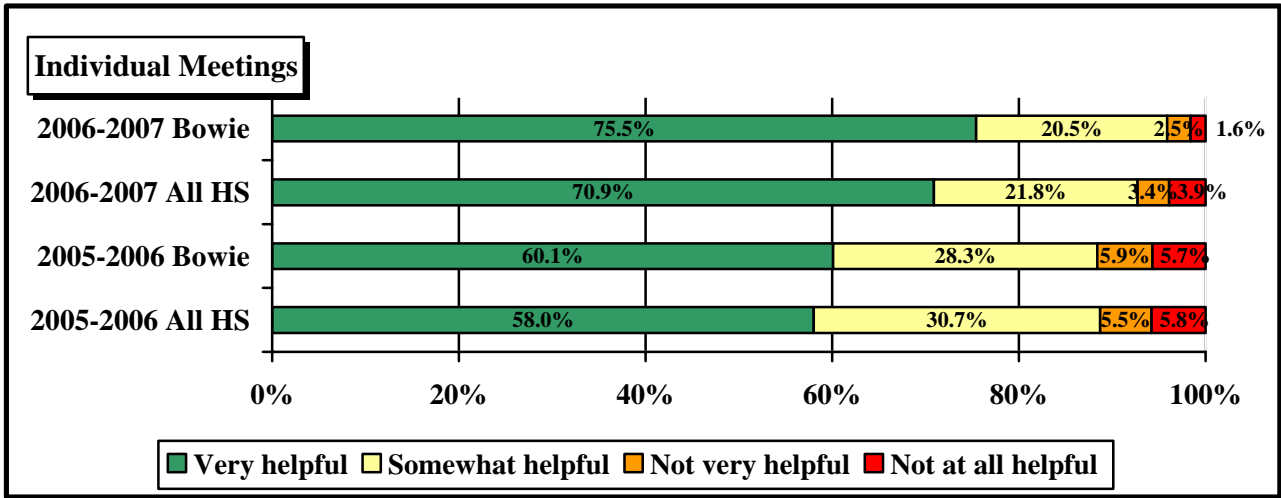
Item 14. *How often do you use a computer...*

	2005-2006	2006-2007
Location or Activity	A	

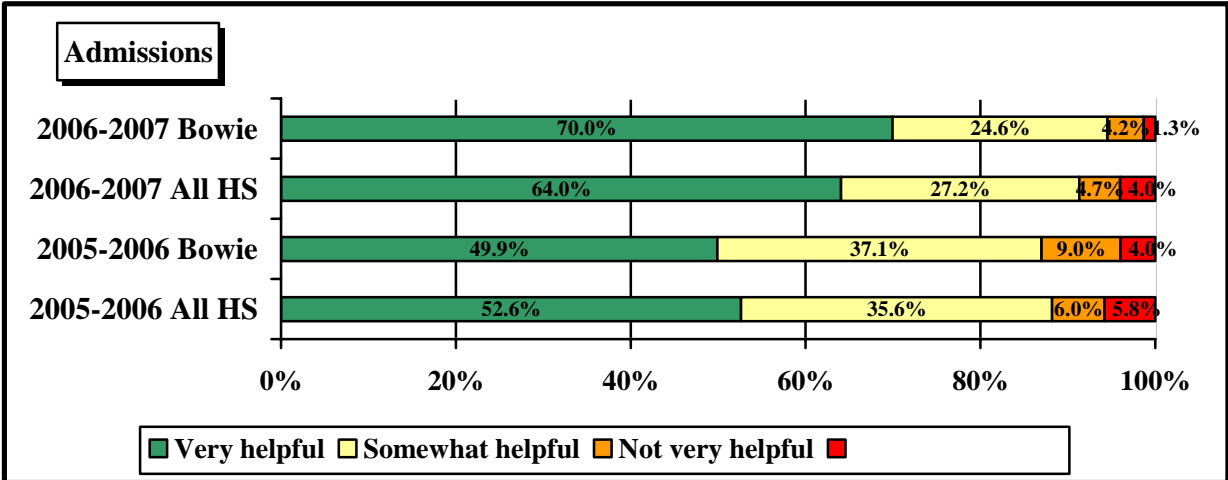
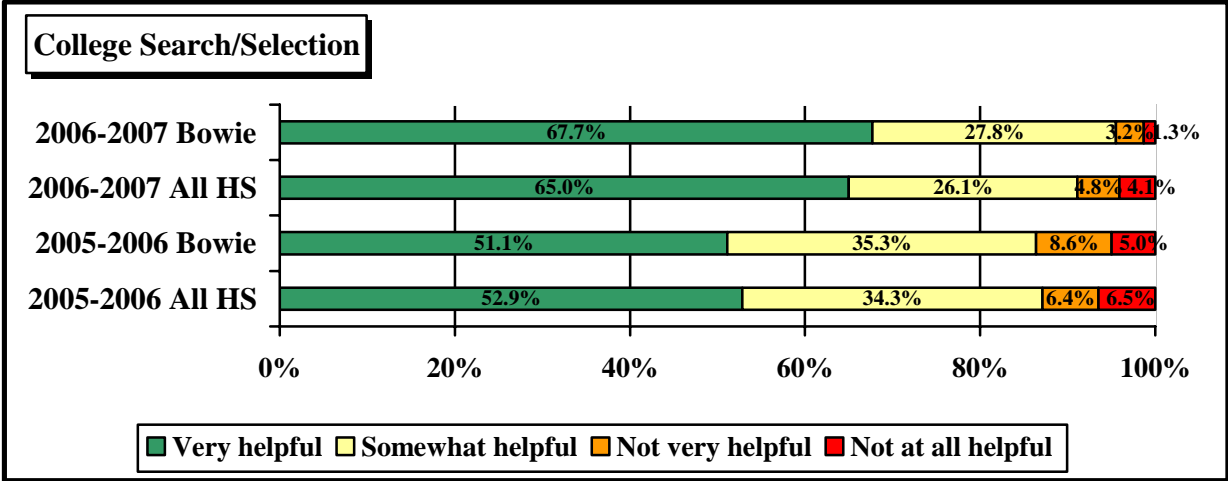
Item 16. High school preparation for post-graduation opportunities

	2004-2005		2005-2006		2006-2007	
	ALL HS	BOWIE	ALL HS	BOWIE	ALL HS	BOWIE
How well prepared were you to plan your course selections? ⁺	2.3	2.3	2.3	2.2	2.2	2.3
How well prepared were you to meet your college and career goals?	2.3	2.3	2.3	2.2	2.2	2.3

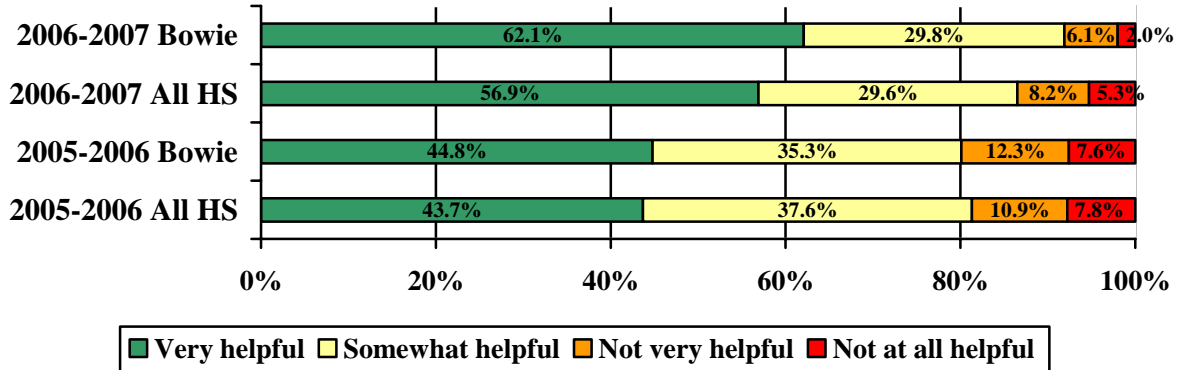
Item 19. How helpful was your Project ADVANCE/College Advisor in the following types of meetings?



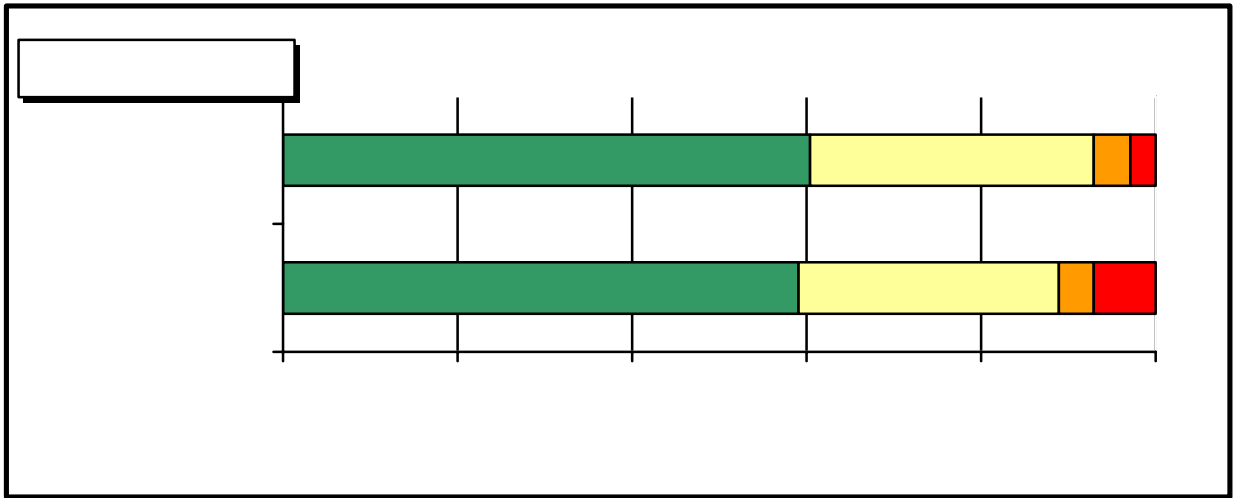
Item 20. How helpful was your Project ADVANCE Facilitator/College Advisor with the following processes?



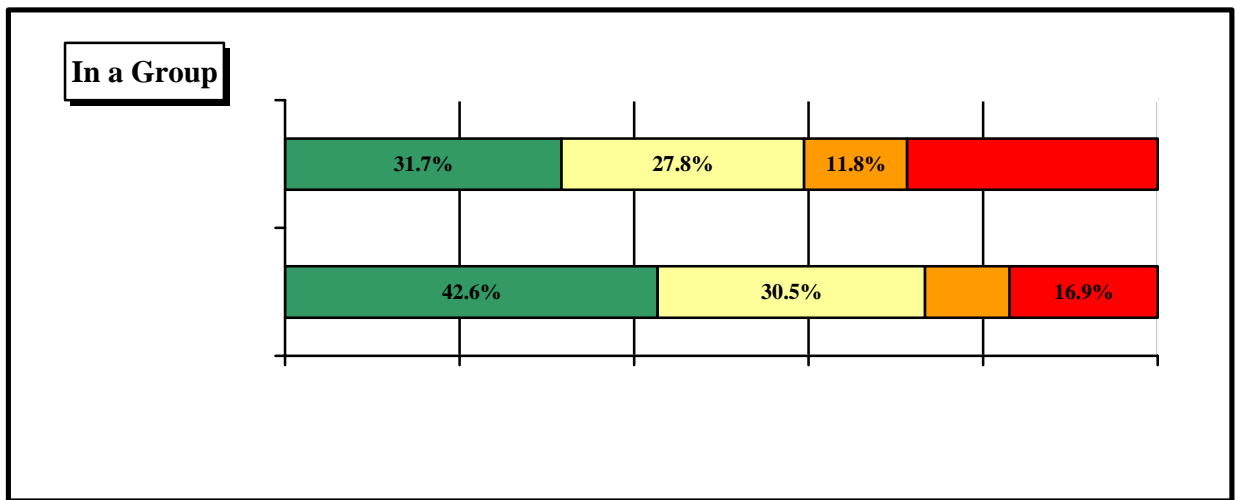
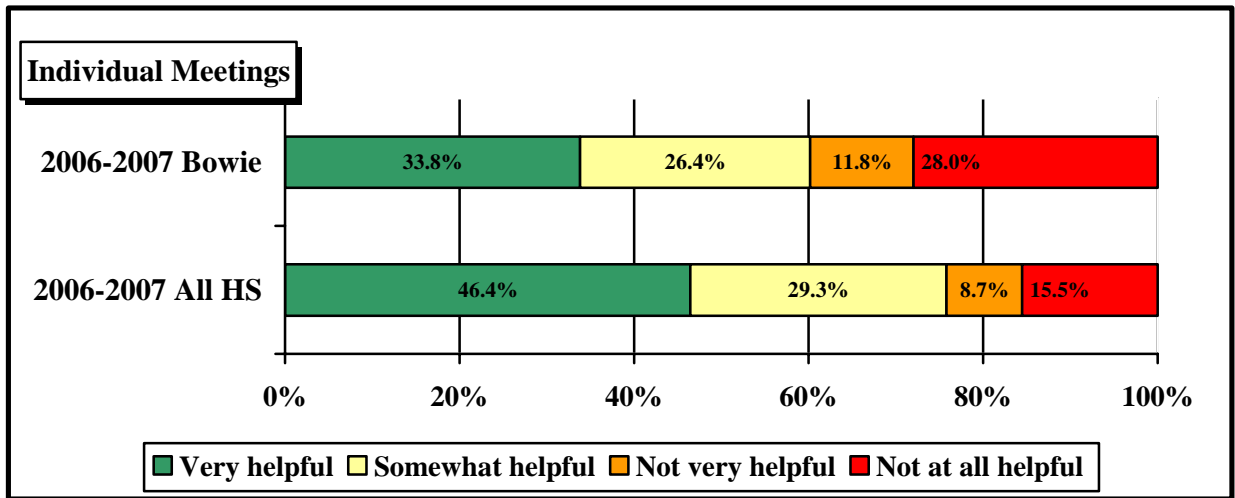
Scholarships



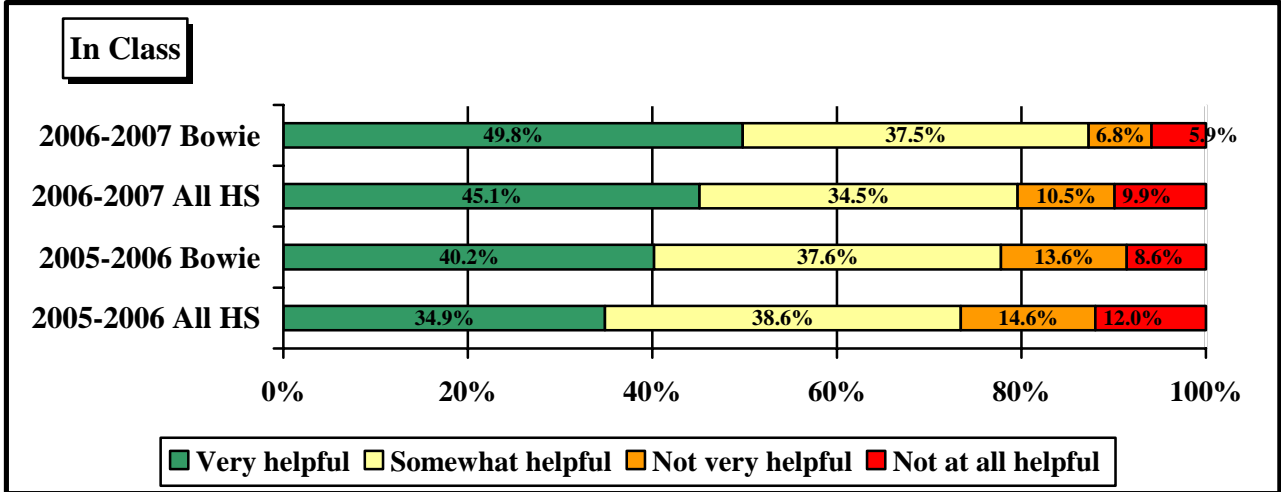
Item 21. *How helpful was your Advocate in the following types of meetings? (Skip this question if you do not have an Advocate).*



Item 22. How helpful was your Advisory Teacher in the following types of meetings? (Skip this question if you do not have an Advisory Teacher).



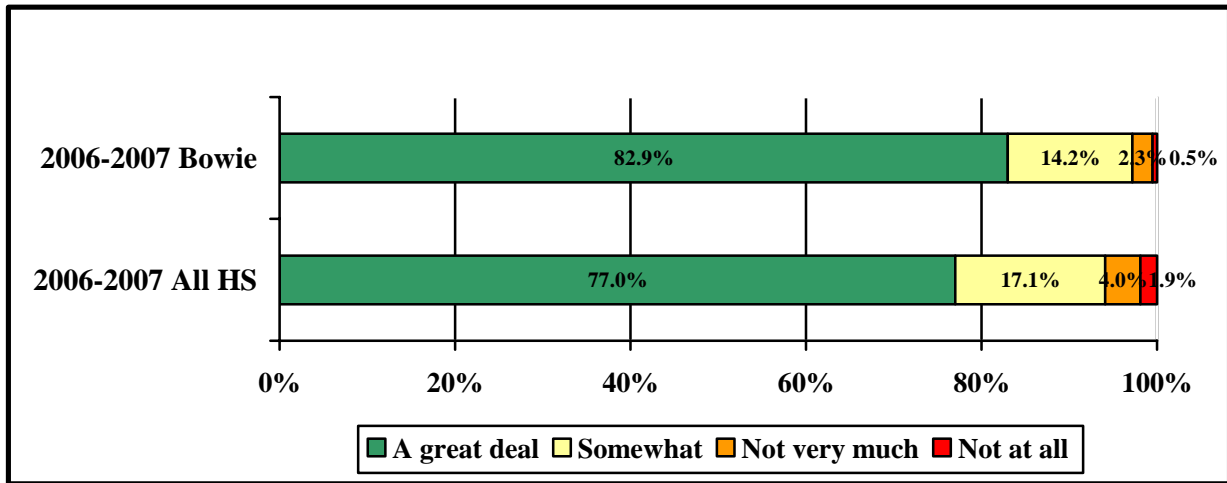
Item 23. *How helpful was your School Counselor in the following types of meetings?*



Item 24. For which of the following issues did you meet with a school counselor?

	2005-2006	2006-2007
Issue	<input type="text"/>	

Item 25. To what extent do your parents / family support your plans for after high school?+



Note: +In previous years, this item was worded, “To what extent did your parents / family encourage you to participate in post-secondary education?”

Item 26. To what extent were your parents involved in the following school-related things?

	2005-2006	2006-2007
ALL		

Item 28. How far did your parents go in school? Indicate your mother and father's highest level of education.

Education Level	2005-2006*		2006-2007			
	MOTHER		MOTHER		FATHER	
	ALL HS	BOWIE	ALL HS	BOWIE	ALL HS	BOWIE
Did not finish high school	16.7%	2.9%	17.4%	4.4%	18.5%	6.0%
Graduated from high school or earned a GED	20.2%	16.1%	22.1%	18.5%	19.6%	12.4%
Attended a 2-yr community/junior college or vocational/technical school, but did not complete a degree	7.9%	9.4%	9.4%	8.9%	6.9%	7.1%
Graduated from a 2-yr community/junior college or vocational/technical school	4.4%	5.7%	5.4%	5.6%	4.6%	4.8%
Attended a 4-yr college, but did not complete a degree	7.3%	10.5%	7.1%	11.8%	6.6%	8.4%
Graduated from college	19.3%	29.5%	19.8%	33.6%	17.5%	31.3%

Items 30-35. To which of the following have you submitted applications; to which of the following have you already been accepted?

	2004-2005		Applied 2005-2006		2006-2007	
	All HS	BOWIE	All HS	BOWIE	All HS	BOWIE
2-yr college	25.4%	21.1%	54.5%	51.2%	49.8%	56.1%
4-yr college	59.9%	70.0%	68.0%	74.3%	69.1%	75.2%
Business/technical/ vocational school	8.1%	4.5%	14.7%	9.0%	13.8%	9.5%

	2004-2005		Accepted 2005-2006		2006-2007	
	All HS	BOWIE	All HS	BOWIE	All HS	BOWIE
2-yr college	10.1%	10.1%	10.1%	10.1%	10.1%	10.1%
4-yr college	10.1%	10.1%	10.1%	10.1%	10.1%	10.1%
Business/technical/ vocational school	10.1%	10.1%	10.1%	10.1%	10.1%	10.1%

For those students who plan to attend a school for postsecondary education or certification:

Item 38. *Will you be the first person in your immediate family to attend college?*

	2005-2006		2006-2007	
	ALL HS	BOWIE	ALL HS	BOWIE
“Yes”	27.9%	12.3%	29.1%	13.0%

Item 39. *Which type of school are you planning to attend within the next year?*

	In Texas			
	2005-2006		2006-2007	
	ALL HS	BOWIE	ALL HS	BOWIE
2-yr college	40.9%	28.4%	38.5%	31.3%
4-yr college	61.2%	60.6%	60.1%	58.8%
Business/technical/vocational school	14.9%	7.0%	11.9%	6.0%

	Out of State	
	2005-2006	2006-2007

Item 41. How important is each of the following in choosing a college?

	2005-2006		2006-2007	
	ALL HS	BOWIE	ALL HS	BOWIE
College expenses	**	**	2.4	2.4
Availability of financial aid	**	**	2.4	2.3
Availability of specific courses or curriculum	**	**	2.6	2.6
Reputation of the college in athletic programs	**	**	1.8	1.7
Social life at the college	**	**	2.2	2.2
Ability to live at home and attend college	**	**	1.8	1.7
Job or employment placement record of the college	**	**	2.1	2.1
Reputation of the college in academic programs	**	**	2.2	2.5
Easy admission standards	**	**	2.5	1.9
Ability to take courses online	**	**	2.0	1.6

Note: Scores range from 1 (not important) to 3 (very important).

For those students without plans to attend postsecondary education within the next year:

Item 42. If you are not planning to pursue further education at this time, what are your primary reasons?

	2004-2005		2005-2006		2006-2007	
	ALL HS	BOWIE	ALL HS	BOWIE	ALL HS	BOWIE
Cannot afford.	33.6%	26.0%	25.0%	18.2%	25.9%	18.2%
Childcare responsibilities.	7.3%	5.5%	6.5%	0.0%	7.8%	4.5%
Don't like school.	15.9%	16.4%	13.6%	13.6%	15.8%	18.2%
Low grades/scores.	28.4%	35.6%	23.7%	9.1%	19.8%	11.4%
Not academically prepared.	17.5%	15.1%	13.1%	9.1%	13.4%	4.5%
Need income for myself.	**	**	23.7%	11.4%	28.9%	27.3%
Need income for others.	**	**	11.8%	4.5%	9.6%	6.8%
Not needed for job.	10.0%	12.3%	11.8%	2.3%	9.4%	15.9%
Military service	**	**	**	**	11.2%	6.8%
Other.	17.7%	20.5%	44.9%	61.4%	16.8%	13.6%

Note: Respondents may select more than one option; percentages will not total 100%.

Item 43. *If you are not planning to pursue further education at this time, do you intend to pursue it at a later time?*

	2005-2006		2006-2007	
	ALL HS	BOWIE	ALL HS	BOWIE
Yes, Definitely	36.6%	38.6%	45.8%	35.3%
Yes, Probably	15.3%	11.4%	15.9%	26.5%
Maybe	21.3%	11.4%	20.6%	17.6%
Probably Not	2.6%	2.3%	4.0%	11.8%
Definitely Not	2.1%	4.5%	2.2%	2.9%
Don't Know	22.1%	31.8%	11.5%	5.9%

For all students:

Items 45-47. *Voting*

	2004-2005		2005-2006	2006-2007
	ALL HS	BOWIE	ALL HS 5	

APPENDIX

Table A.1. Response Rate and Respondent Demographic Characteristics

	Seniors Enrolled	# Surveys	Initial Response Rate	African Am	Hispanic	White	Female	Male	# Removed	Final N	Corrected Response Rate
Akins		354	79.2%	11.9%	62.4%	22.0%	46.0%	54.0%	<39>	408	86.8%
Anderson		407	89.3%	5.2%	18.9%	67.0%	48.6%	51.4%	<20>	437	93.3%