

Boone Elementary School

	111 577 <b>19.2%</b>
	190 556 <b>34.2%</b>





1.1%

5.5%

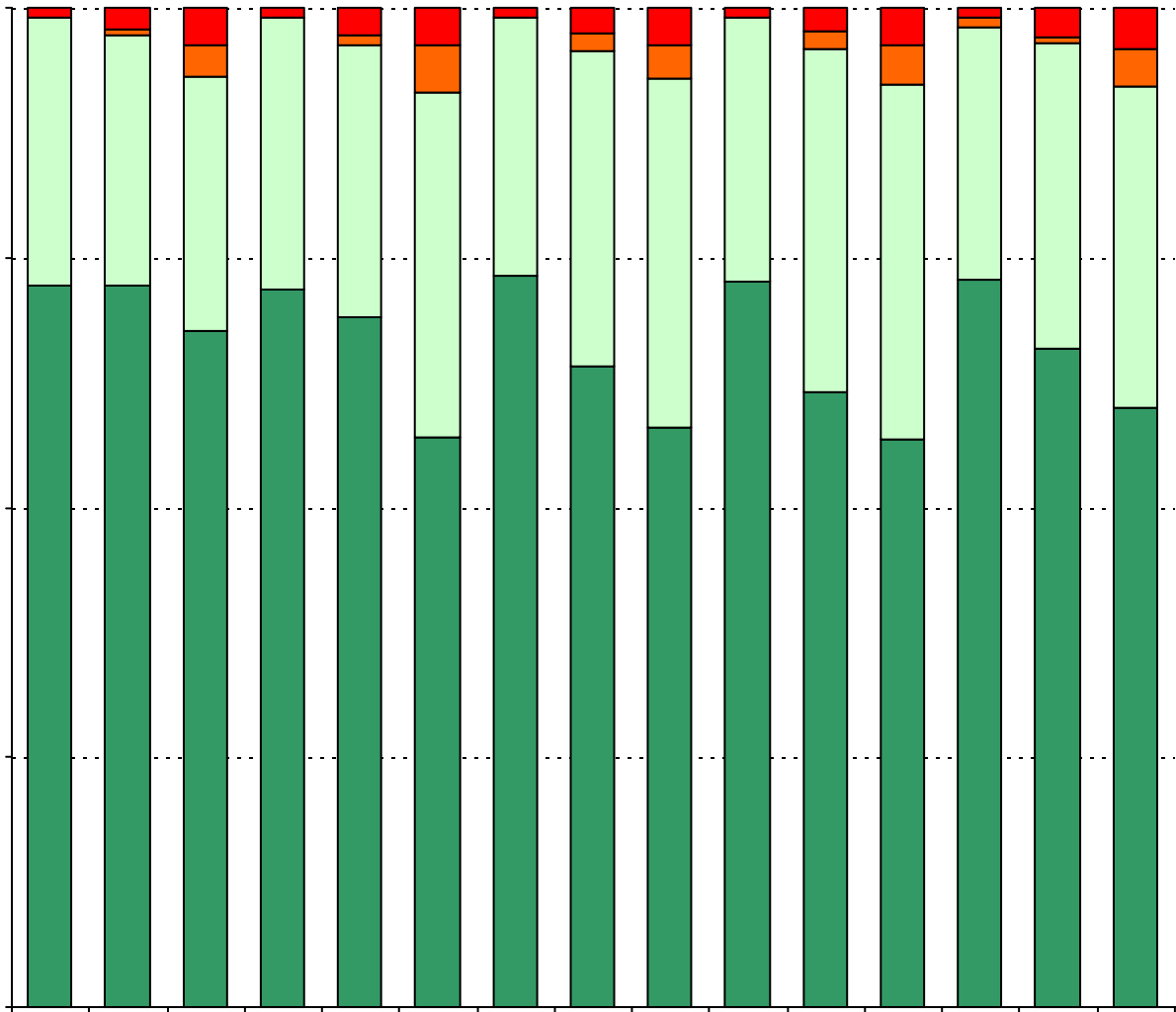
13.7%

20.9%

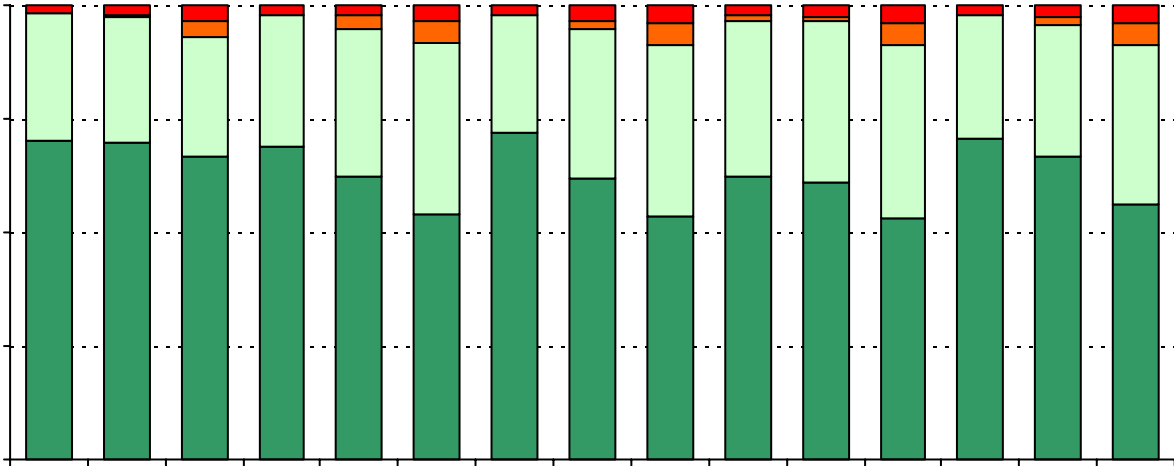
10.4%

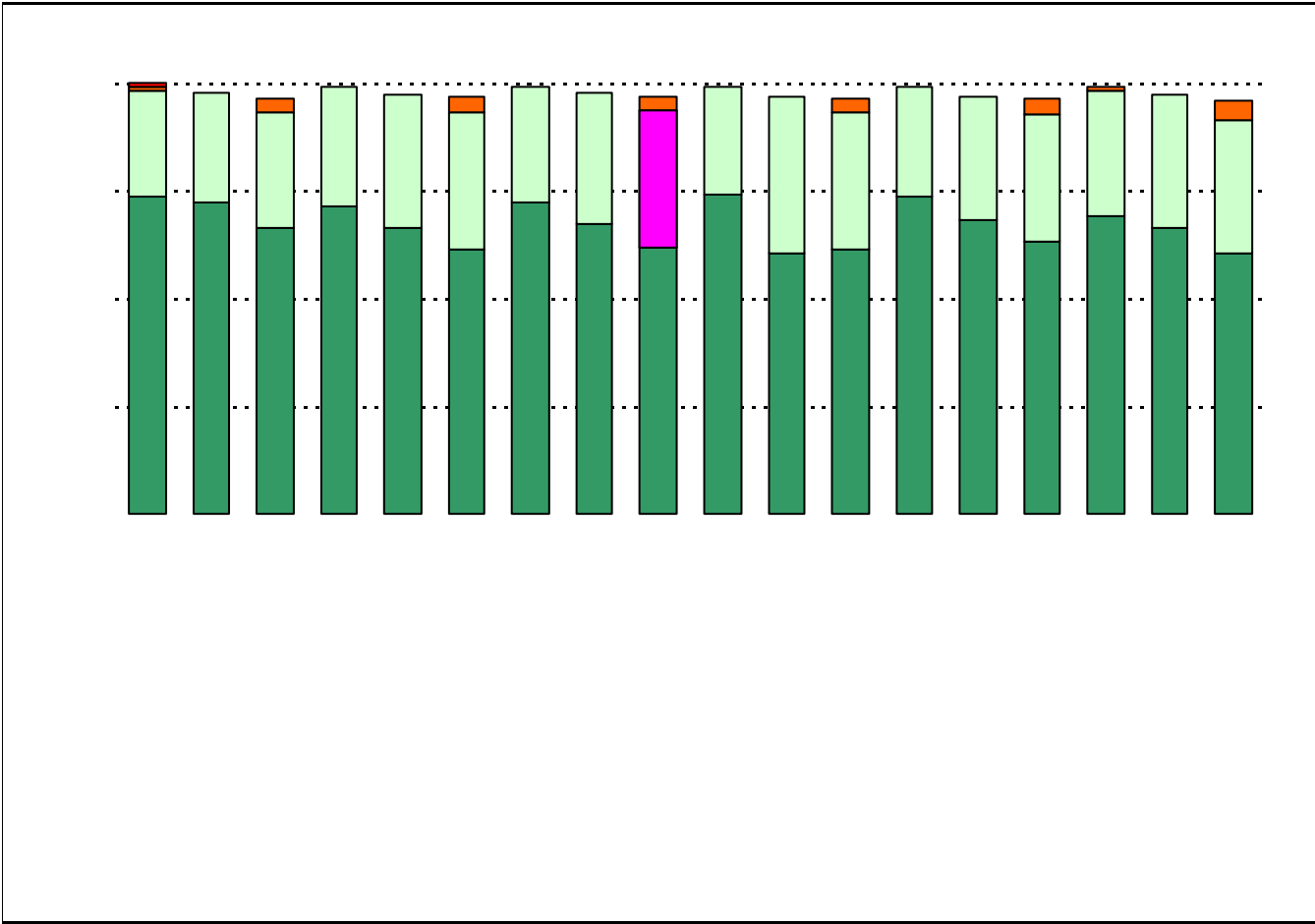
21.4%

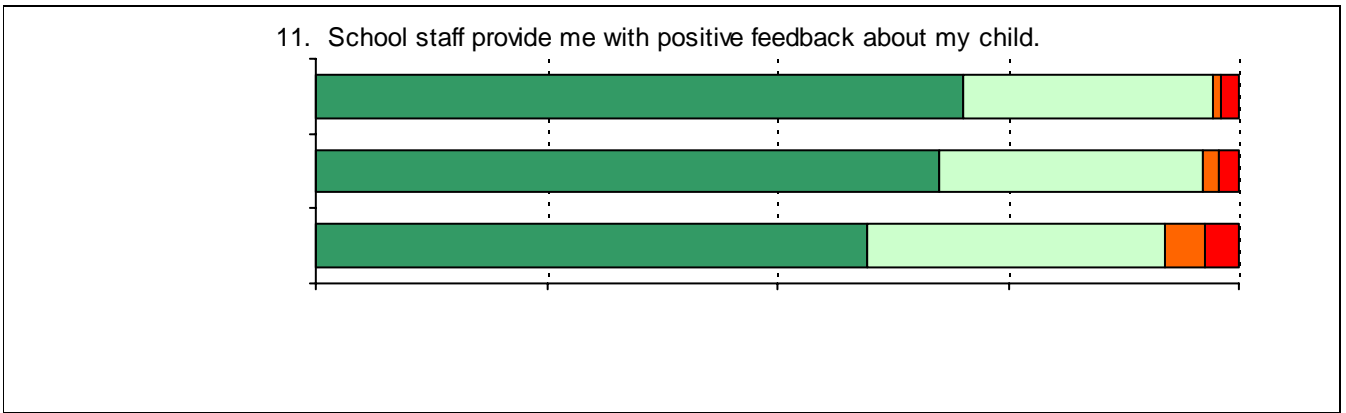
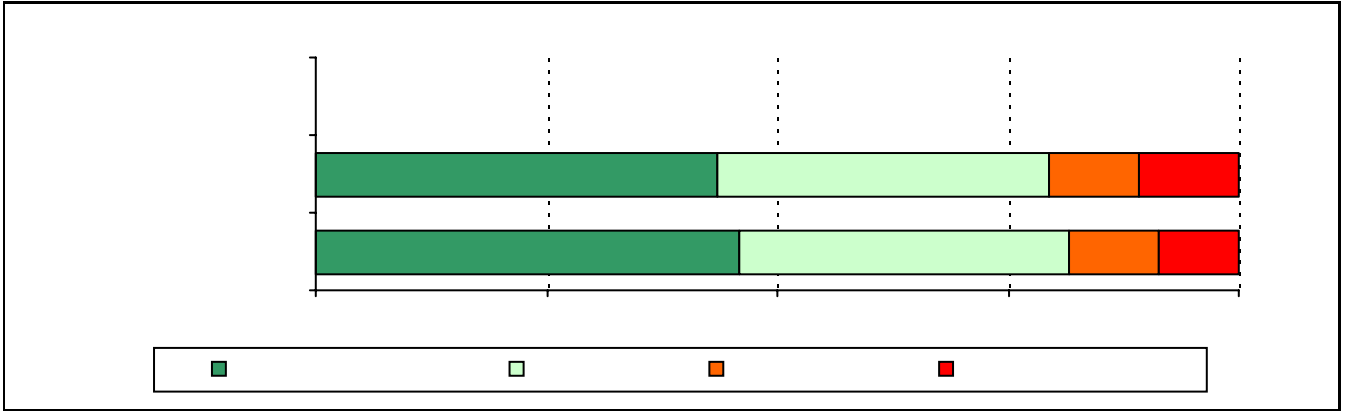
5. The following school staff treat me with courtesy and respect.

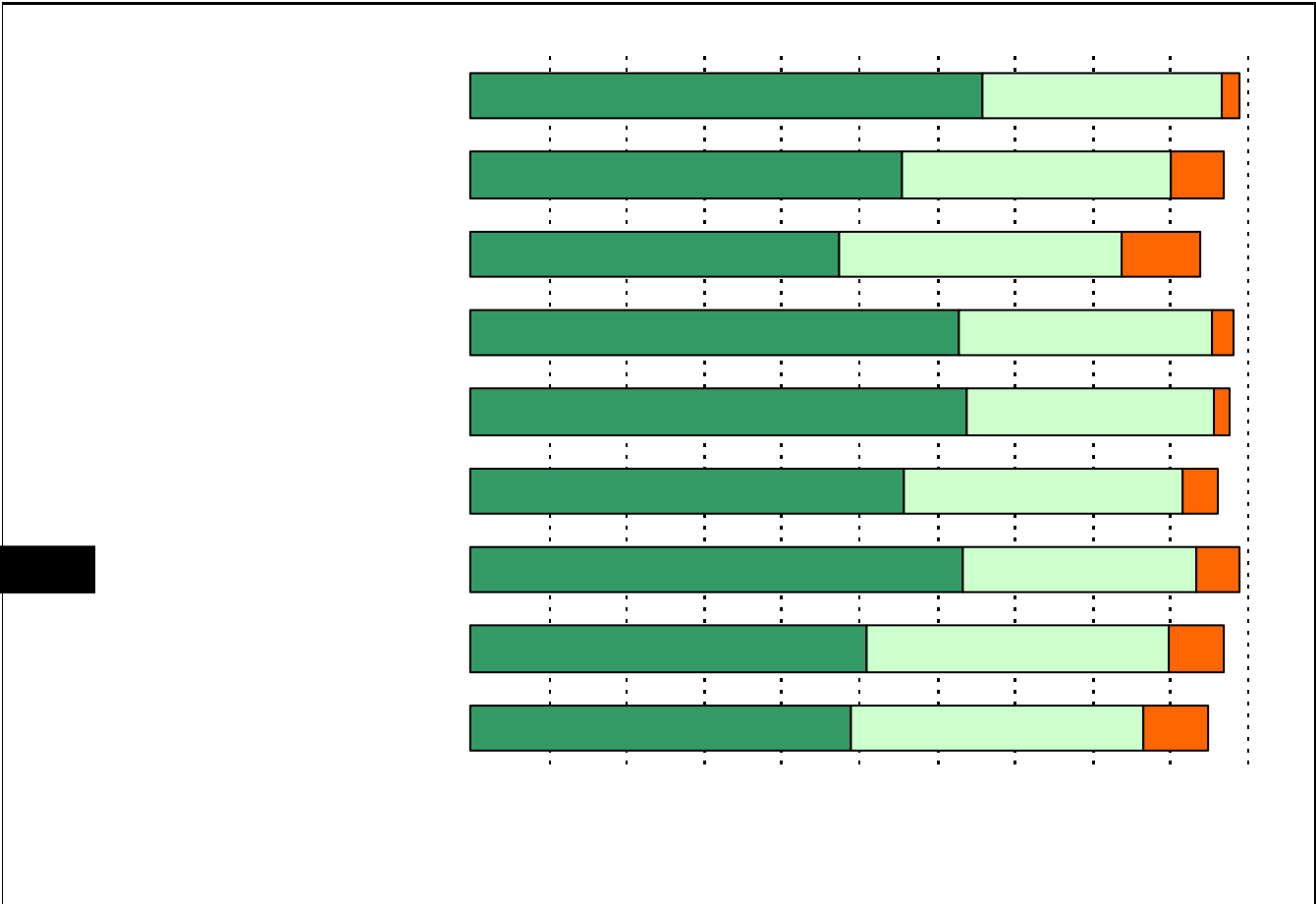


6. The following school staff provide me with opportunities for two-way communication.



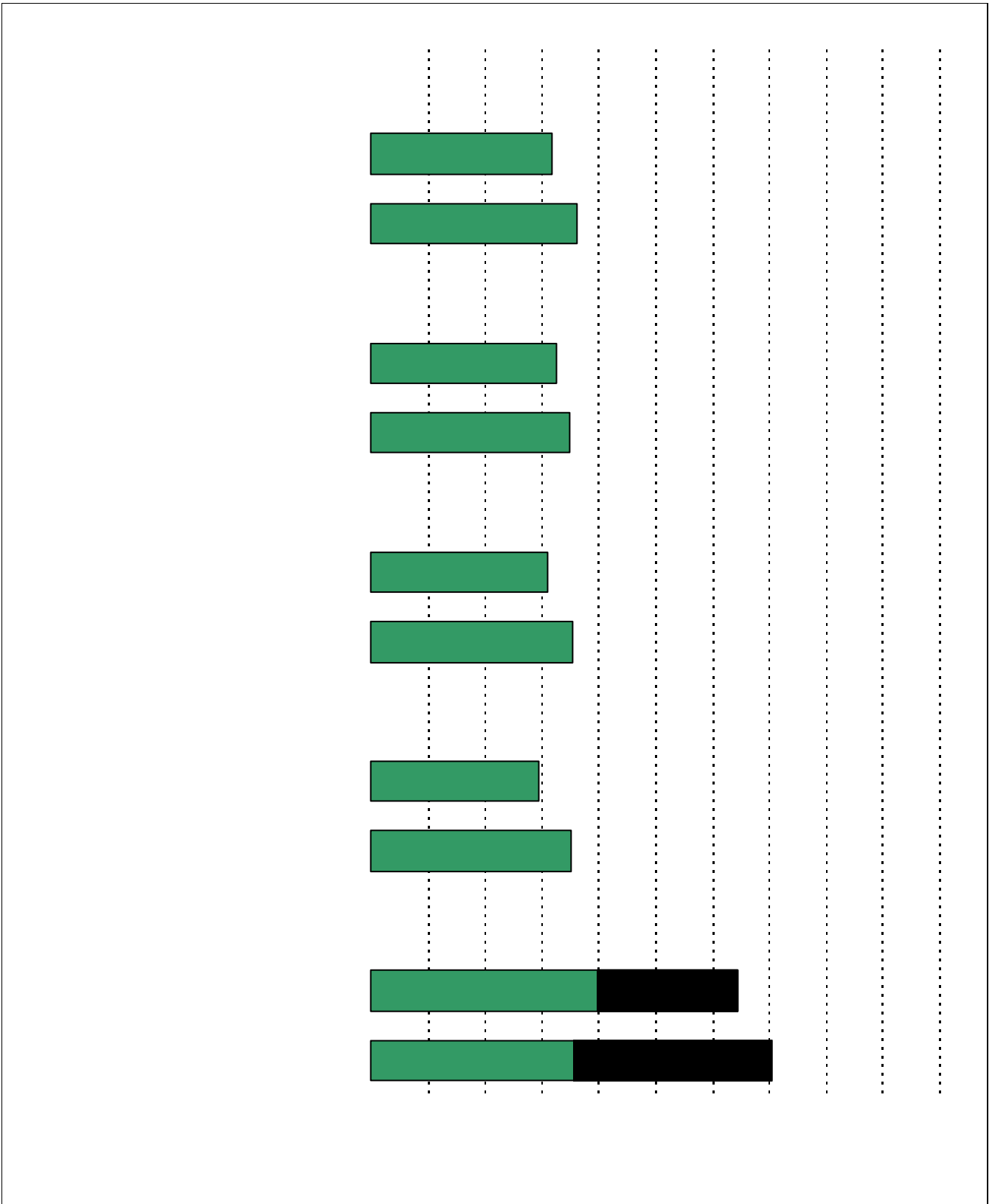












.....

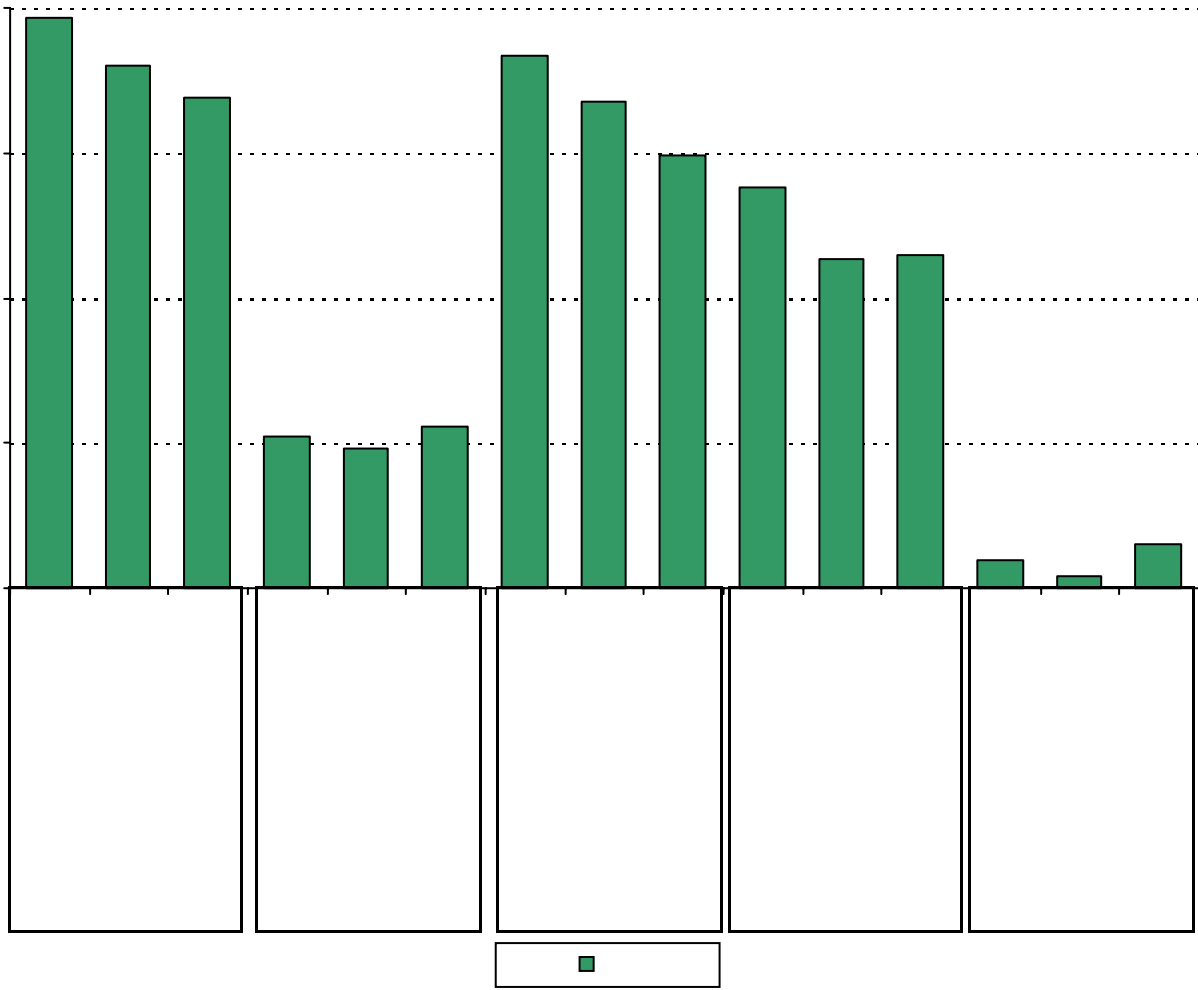
.....

.....

.....

\* Item(s) #17, #18 #19 added to the survey in 2006

20. My goals for my child include the following plans:



Respondents who selected Certificate, Associates, Bachelors, or Graduate degree were included in the "Yes" percentage for High School diploma, even if they did not select the High School diploma option. Respondents who selected Graduate degree were included in the "Yes" percentage for Bachelors degree, even if they did not select the Bachelors degree option.

Number of Boone Elementary School Parent Responses, by Response Option

		0	157		
	114	53	1	5	13
	75	42	2	3	59
	104	51	3	4	20
	127	50	2	5	2
	135	47	1	4	0
	103	45	3	4	24
	70	41	1	3	63
	92	49	3	5	29
	107	56	5	4	9
	130	52	1	4	0
	83	49	4	6	30
	56	43	4	5	65
	76	55	4	6	32
	76	55	6	5	32
	132	44	0	7	3
	74	54	3	6	38
	52	47	4	4	67
	67	54	5	4	44
	66	48	4	4	52
	117	56	1	4	8
	114	48	0	5	17
	80	48	0	4	46
	111	50	0	4	16
	114	53	0	5	12
	131	46	0	4	4
	104	49	0	4	19
	40	33	9	10	91
	123	52	3	4	2
	113	63	2	4	3

Number of Boone Elementary School Parent Responses, by Response Option  
(Continued)

	119	61	1	5	1
	115	56	5	4	5
	99	59	9	6	7
	90	56	11	5	25
	117	58	4	4	2
	85	65	12	5	17
	126	56	0	5	0
	98	48	8	5	28
	81	50	7	6	38
	86	47	5	3	41
	121	52	3	3	4
	15	19	9	4	133
	15	16	10	5	133
	14	13	13	5	134
	13	14	12	5	134
	18	11	11	5	133
	110	38	5	6	28
	135	40	4	4	0
	154	25			
	166	19			
	124	44			
	100	77			
	136	43			
	118	58			
	138	38			
	171	46	159	108	4