



2005-2006 AISD Parent Survey Results

Blanton Elementary School

The following report contains the results of the 2005-2006 AISD Parent Survey for your campus and all AISD schools at your level. The first section of this report provides a comparison of the campus demographics and the demographics reported by parents who responded to the survey from your campus. The next section describes the percentages of parents selecting specific responses for each survey item, and the final section indicates the actual number of parents who selected each response option. Campus survey results should be examined for areas of strength and opportunities for improvement. Results for all AISD schools at your level and results for your campus from 2004-2005 are presented to provide a reference for comparison.

How many parents responded to the survey in 2004-2005 and 2005-2006, and how does this compare to the number of students in the population each year?

	Campus	District EL	District MS	District HS
# of Parents Responding in 2004-2005	306	12,137	2,007	2,700
# of Students in 2004-2005	626	43,566	15,705	19,976
Ratio of Parent Respondents to Students, 2004-2005	48.9%	27.8%	12.8%	13.5%
# of Parents Responding in 2005-2006	273	10,900	1,801	2,085
# of Students in 2005-2006	617	44,827	15,624	20,081
Ratio of Parent Respondents to Students, 2005-2006	44.2%	24.3%	11.5%	10.4%

Note: The ratio of parent respondents to students is listed above as a percentage for ease of interpretation; however, it is the number of parents who responded per 100 students enrolled.

What did parents report as their child's ethnicity, and how does this compare to the ethnic distribution of the student population?

Ethnicity	% of Students, as Reported by Campus Parent Respondents	% of Students in Campus Population
African American	17.9%	19.1%
Asian	0.0%	0.0%
Hispanic	77.1%	77.8%
Native American	3.1%	0.0%
White	1.8%	3.1%

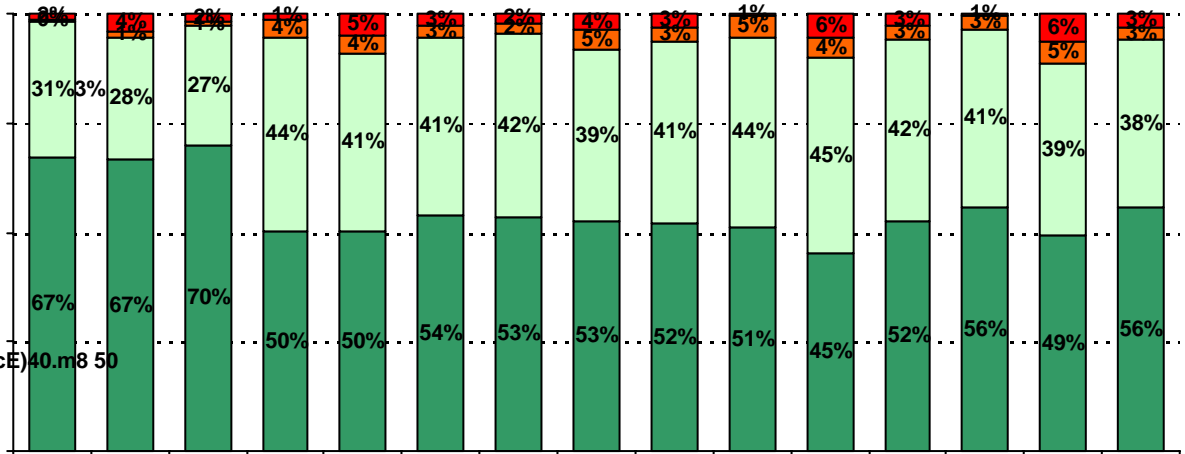
What did parents report as their child's grade, and how does this compare to the

Grade	% of Students, as Reported by Campus Parent Respondents	% of Students in Campus Population
EC	N/A	N/A
PK	0.0%	13.1%
K	1.2%	17.3%
1st	23.1%	15.6%
2nd	28.4%	14.3%
3rd	14.2%	12.6%
4th	8.3%	13.1%
5th	24.9%	13.9%
6th	N/A	N/A

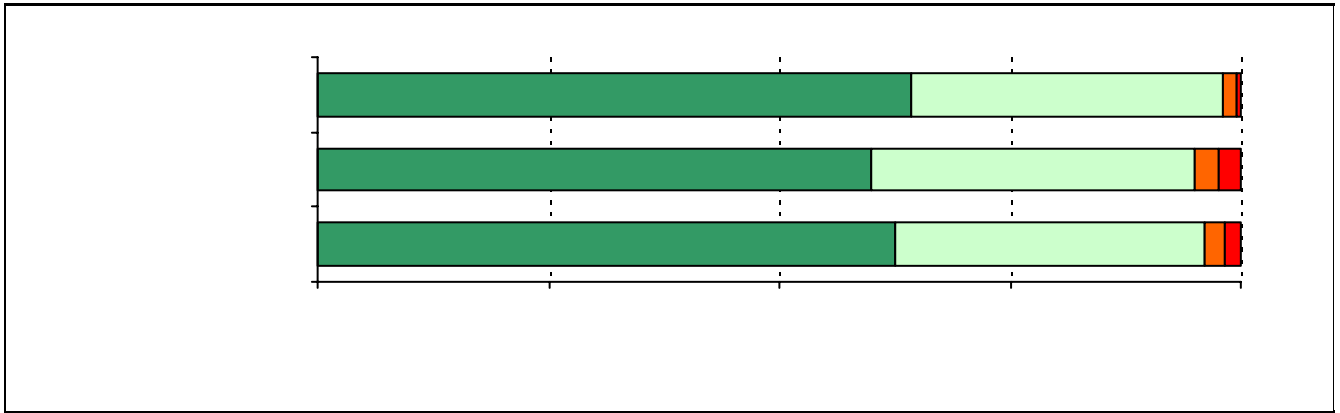
Note: Student population data are based on Fall PEIMS data submitted by the district to TEA, and may differ from the official AEIS report.

USING THE RESULTS OF THE AISD PARENT SURVEY

5. The following school staff provide me with opportunities for two-way communication.



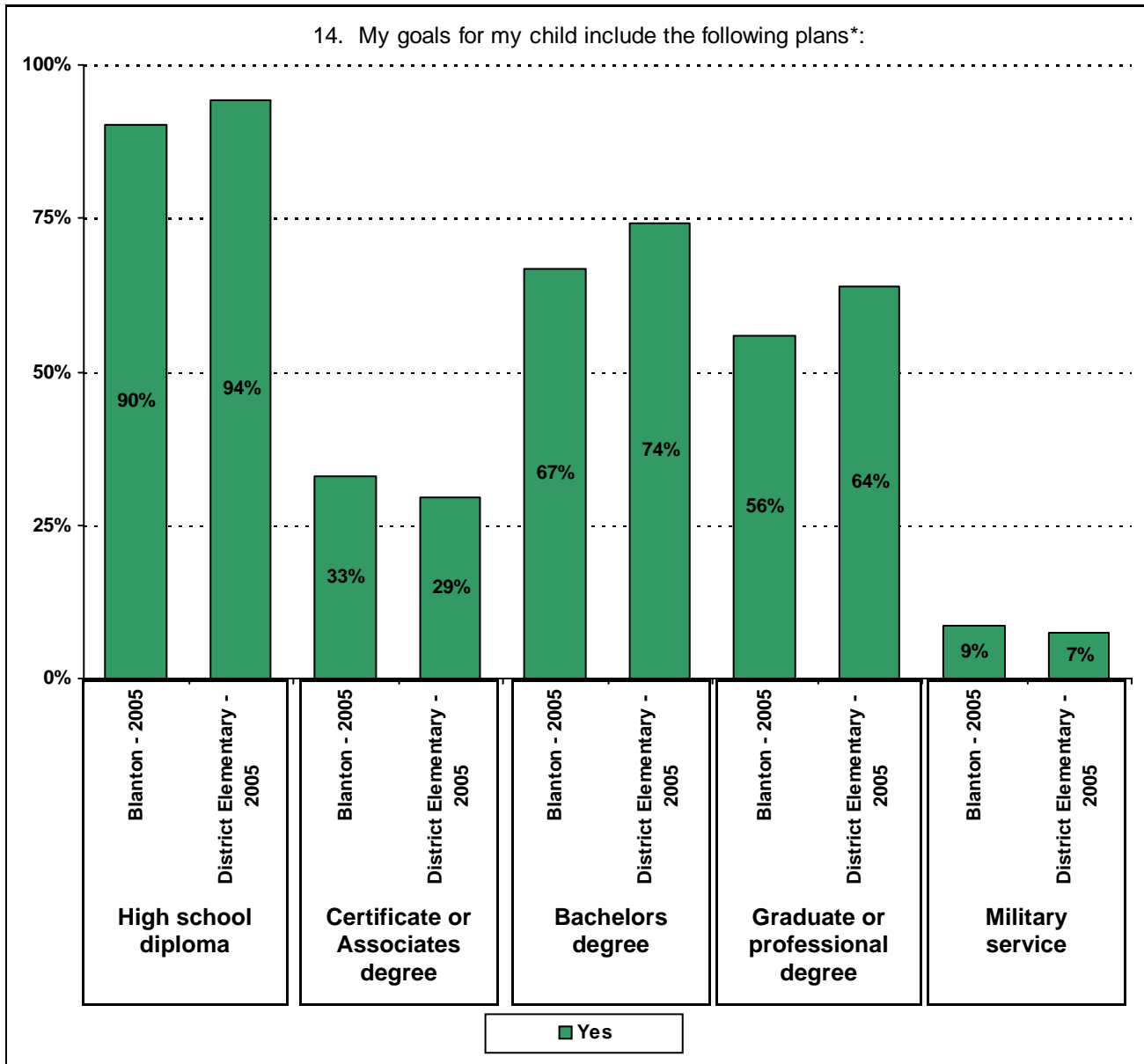
)-5(c)-50(cc)-503.5()7(cE)40.m8 50



.....



Required



* Item 14 was added to the survey in 2005. Respondents who selected Certificate, Associates, Bachelors, or Graduate degree were included in the "Yes" percentage for High School diploma, even if they did not select the High School diploma option. Respondents who selected Graduate degree were included in the "Yes" percentage for Bachelors degree, even if they did not select the Bachelors degree option.

Item Response Details

Number of Blanton Elementary School Parent Responses, by Response Option

		Strongly Agree	Agree	Disagree	Strongly Disagree	Don't Know/NA
4a.	n = 229	96	86	7	20	20
4b.	n = 217	86	85	9	10	27
4c.	n = 209	88	71	2	4	44
4d.	n = 230	104	82	15	15	14
4e.	n = 250	172	59	2	9	8
5a.	n = 220	96	76	10	12	26
5b.	n = 207	82	81	8	10	26
5c.	n = 207	89	66	8	6	38
5d.	n = 222	98	79	8	10	27
5e.	n = 245	156	65	3	10	11
6a.	n = 213	85	76	13	20	19
6b.	n = 209	77	79	13	16	24
6c.	n = 210	78	74	12	8	38
6d.	n = 212	86	72	14	11	29
6e.	n = 259	174	62	2	10	11
7a.	n = 215	85	76	5	18	31
7b.	n = 209	76	78	9	17	29
7c.	n = 209	83	73	4	9	40
7d.	n = 206	82	65	10	10	39
7e.	n = 244	148	72	0	8	16
8a.	n = 217	105	70	4	17	21
8b.	n = 208	96	72	8	9	23
8c.	n = 206	102	61	1	8	34
8d.	n = 213	111	64	5	10	23
8e.	n = 238	158	58	2	8	12
8f.	n = 212	117	60	2	11	0
9.	n = 257	147	86	6	6	12
10.	n = 259	135	96	2	10	16

Number of Blanton Elementary School Parent Responses, by Response Option
(Continued)

		Strongly Agree	Agree	Disagree	Strongly Disagree	Don't Know/NA
11a.	n = 227	114	81	2	7	23
11b.	n = 233	134	78	2	6	13
11c.	n = 233	121	83	5	6	18
11d.	n = 231	123	81	10	6	11
11e.	n = 222	106	89	2	7	18
11f.	n = 236	132	85	4	8	7
11g.	n = 232	119	86	4	7	16
11h.	n = 219	102	88	5	10	14
11i.	n = 212	93	68	5	7	39
12a.	n = 215	95	61	3	11	45
12b.	n = 228	100	68	10	10	40
12c.	n = 221	97	70	9	12	33
12d.	n = 215	95	70	10	12	32
12e.	n = 226	111	89	4	9	13
12f.	n = 234	111	88	5	10	20
13a.	n = 242	147	77	3	9	6
13b.	n = 220	108	78	6	10	18
13c.	n = 216	110	66	6	6	28
13d.	n = 224	113	73	5	7	26
13e.	n = 238	150	67	4	7	10
14.	n = 234	<i>Item 14 did not use the "Strongly Agree" to "Strongly Disagree" scale. Numbers below reflect the number of parents selecting each goal. These numbers will not sum to the total number of item respondents because parents may select multiple goals.</i>				
		High School diploma	Certificate/ Associates degree	Bachelors degree	Graduate/ Professional degree	Military service
		211	77	156	131	20