



2006-2007 AISD Parent Survey Results

Bedichek Middle School

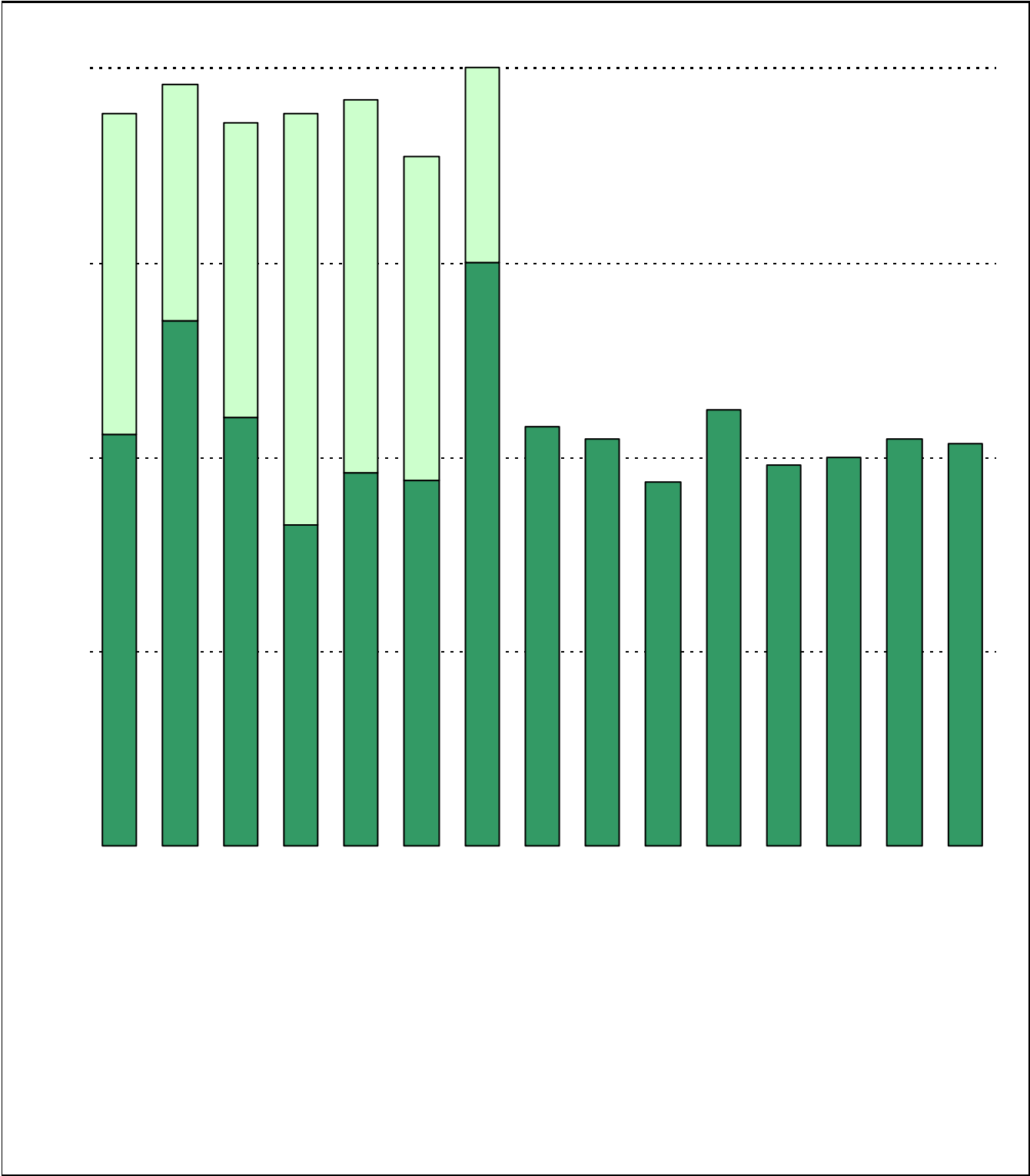
The following report contains the results of the 2006-2007 AISD Parent Survey for your campus and all AISD schools at your level. The first section of this report provides a comparison of the campus demographics and the demographics reported by parents who responded to the survey from your campus. The next section describes the percentages of parents selecting specific responses for each survey item, and the final section indicates the actual number of parents who selected each response option. Campus survey results should be examined for areas of strength and opportunities for improvement. Results for all AISD schools at your level and results for your campus from 2005-2006 are presented to provide references for comparison. Please note that due to differences in response rates by campus, ranging from 1.67% to 19.79%, district level results are more influenced by some campuses than others.

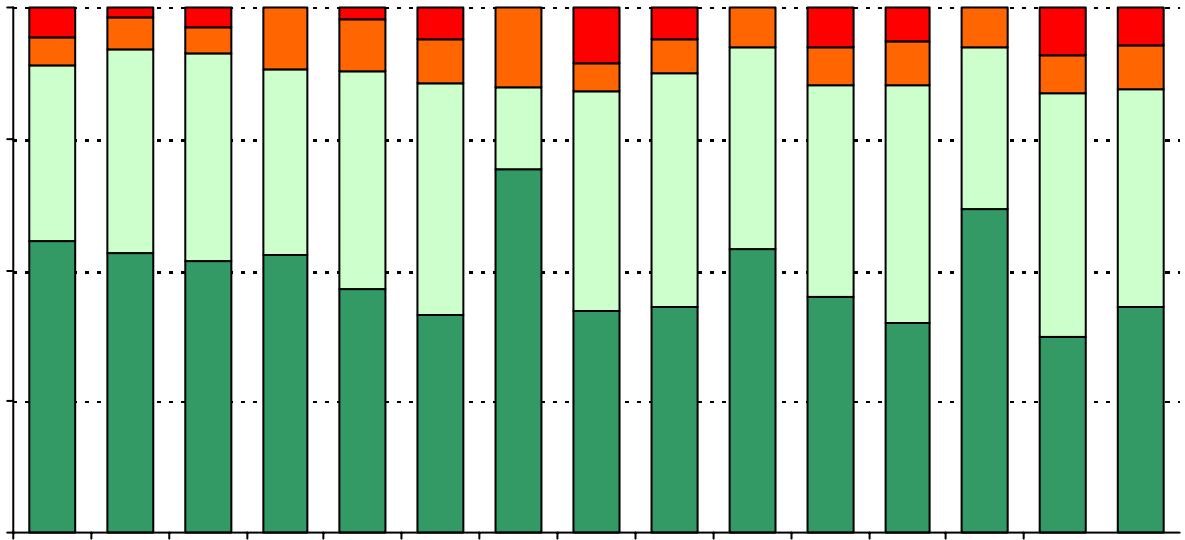
How many parents responded to the survey in 2005-2006 and 2006-2007, and how does this compare to the number of students in the population each year?

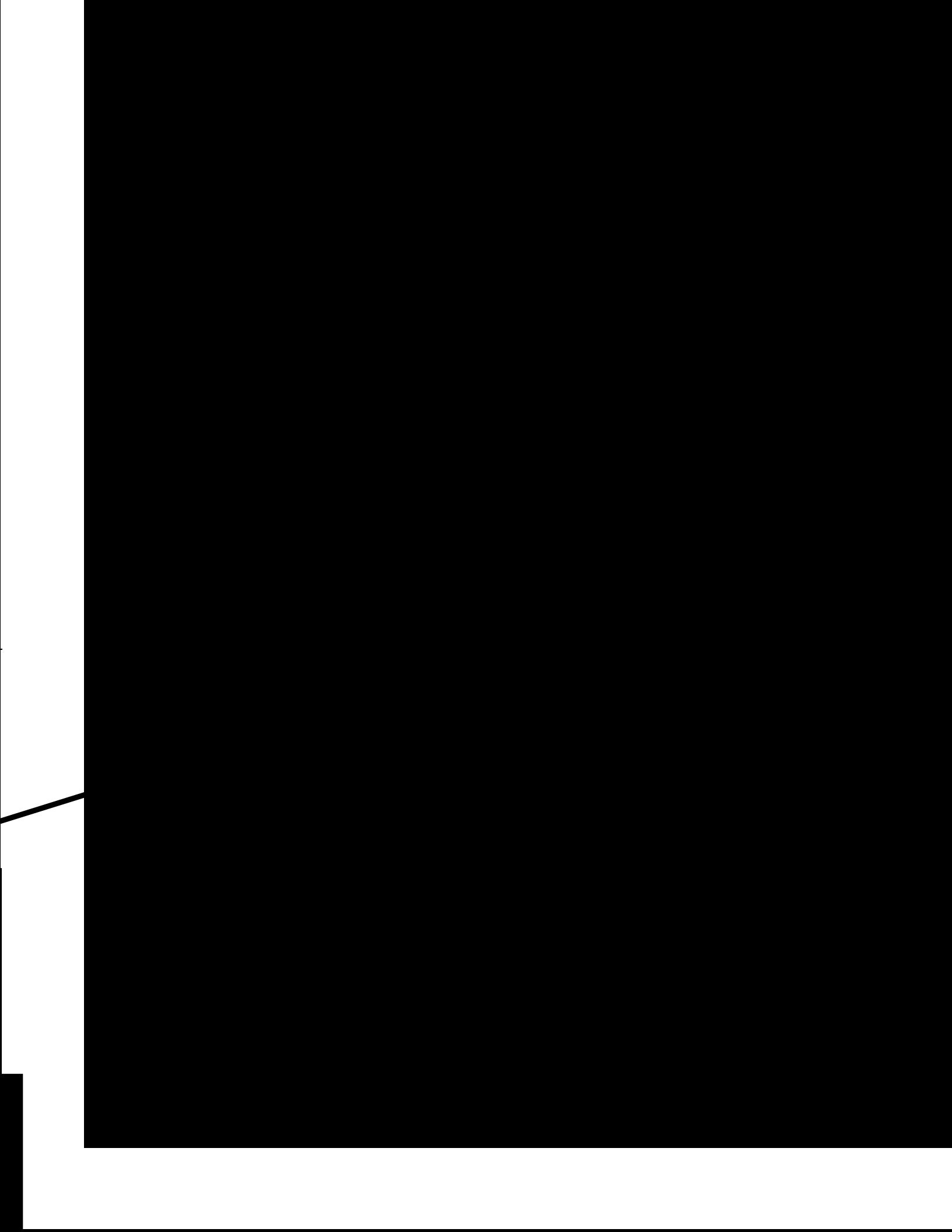
	Campus	District EL	District MS	District HS
# of Parents Responding in 2005-2006	19			
# of Students in 2005-2006	914	44,827	15,624	20,081
<i>Ratio of Parent Respondents to Students, 2005-2006</i>	2.1%	24.3%	11.5%	10.4%
# of Parents Responding in 2006-2007	54	11,812	1,354	1,426
# of Students in 2006-2007	1,023	45,431	15,790	20,279
	5.3%	26%	8.6%	7%

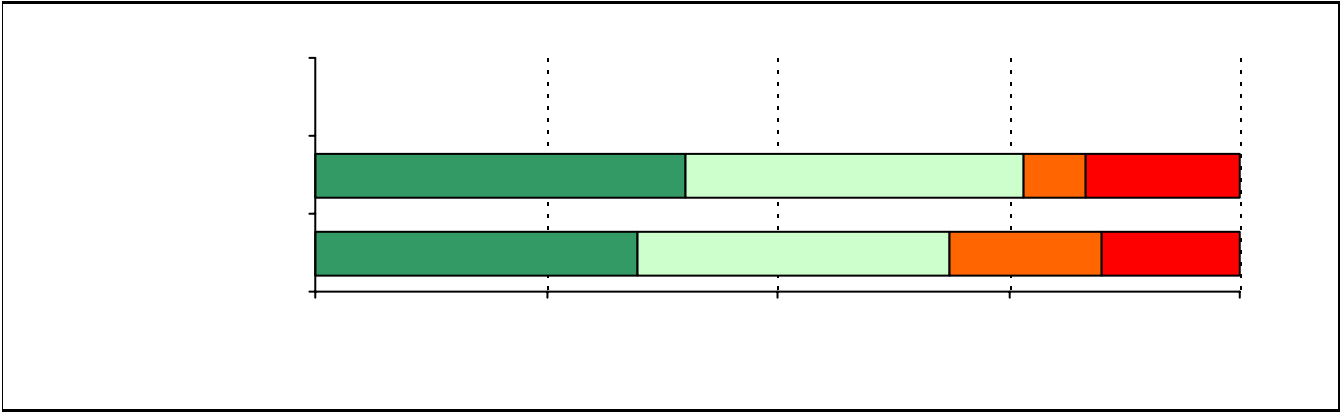
What did parents report as their child's ethnicity, and how does this compare to the ethnic distribution of the student population?

Ethnicity	% of Students, as Reported by Campus Parent Respondents	% of Students in Campus Population
	4.2%	
	0.0%	
	81.3%	
Native American	0.0%	0.1%
White	14.6%	16.8%

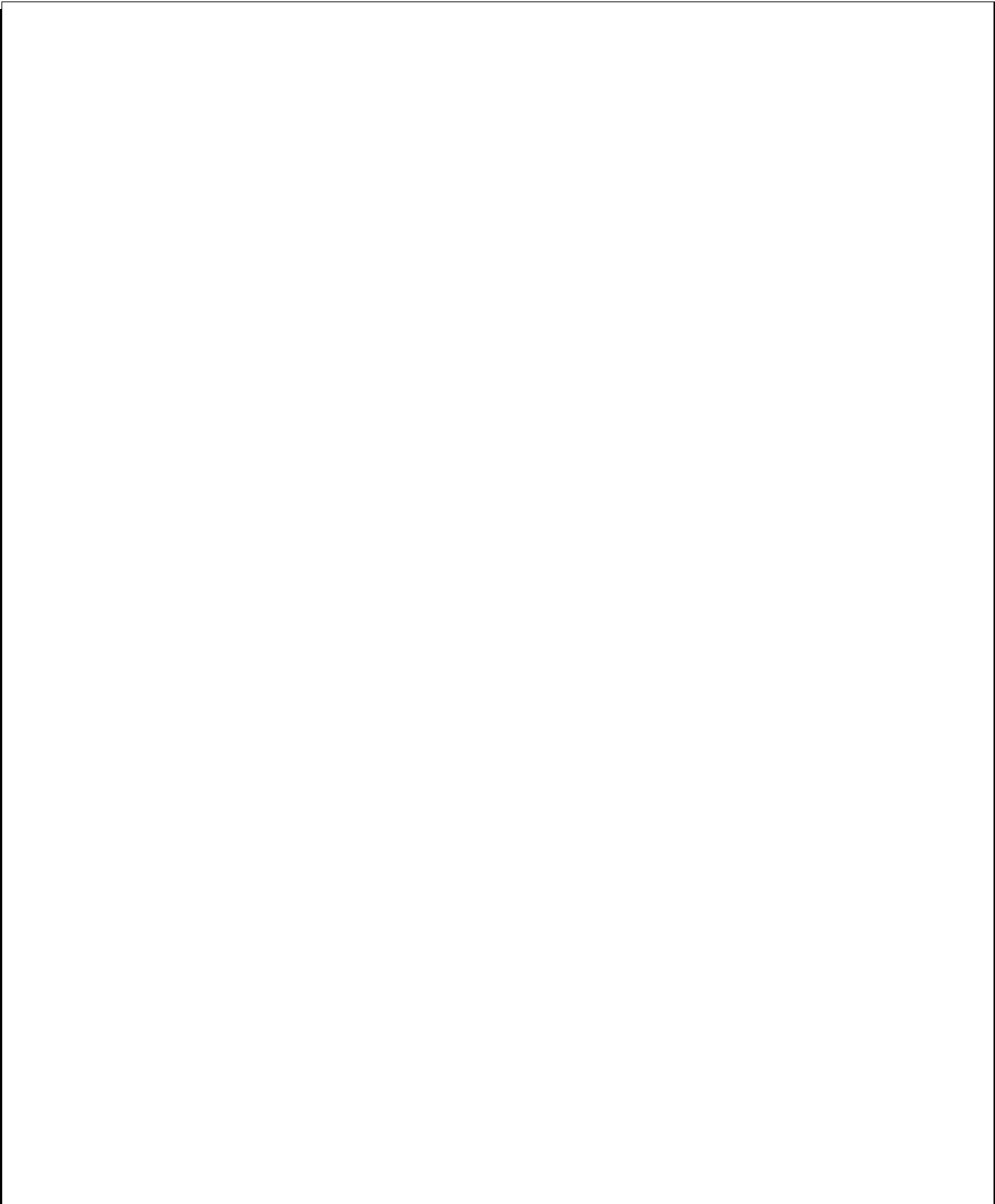
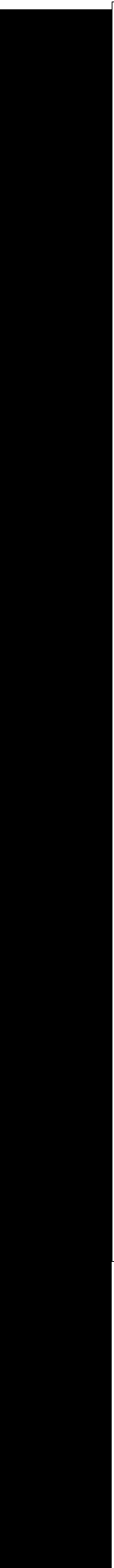


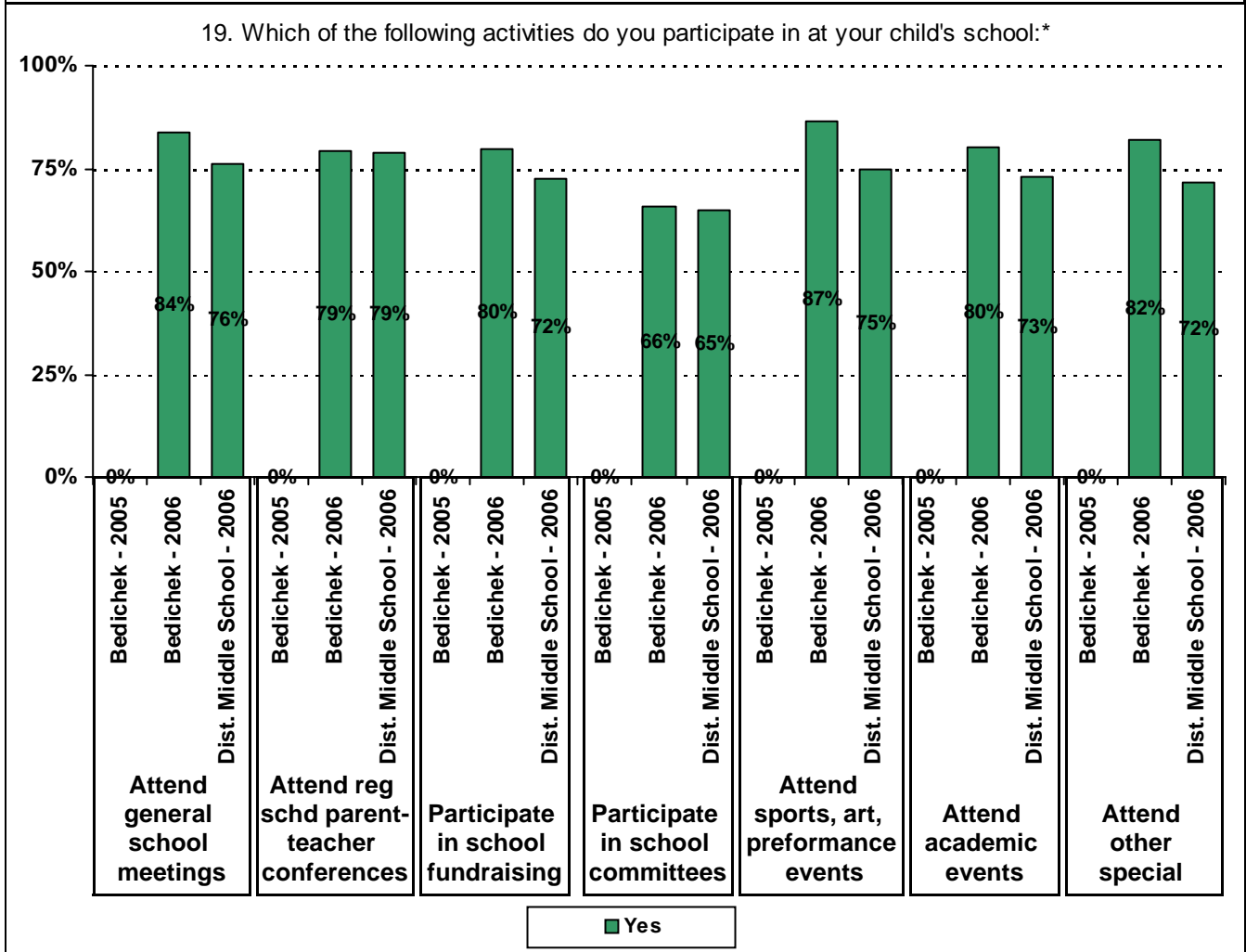
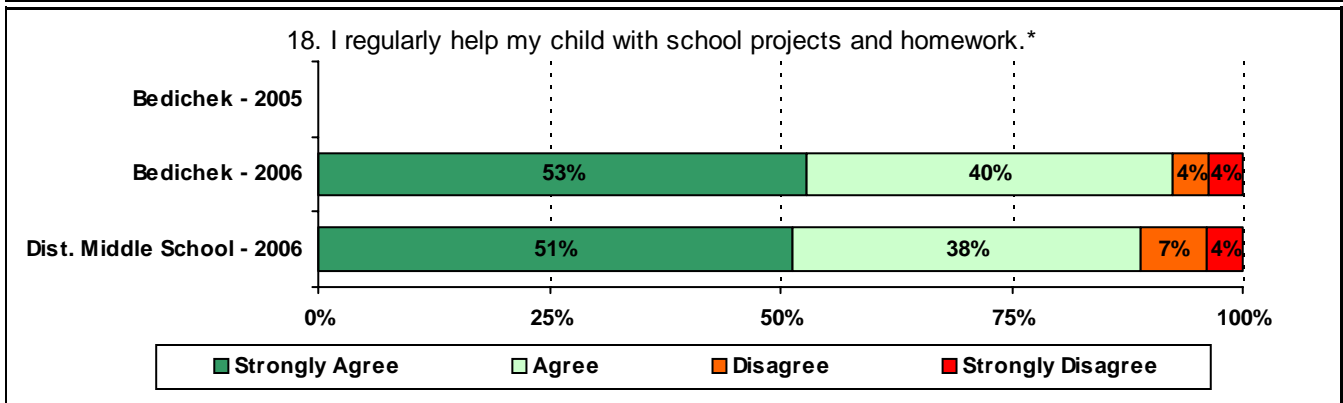
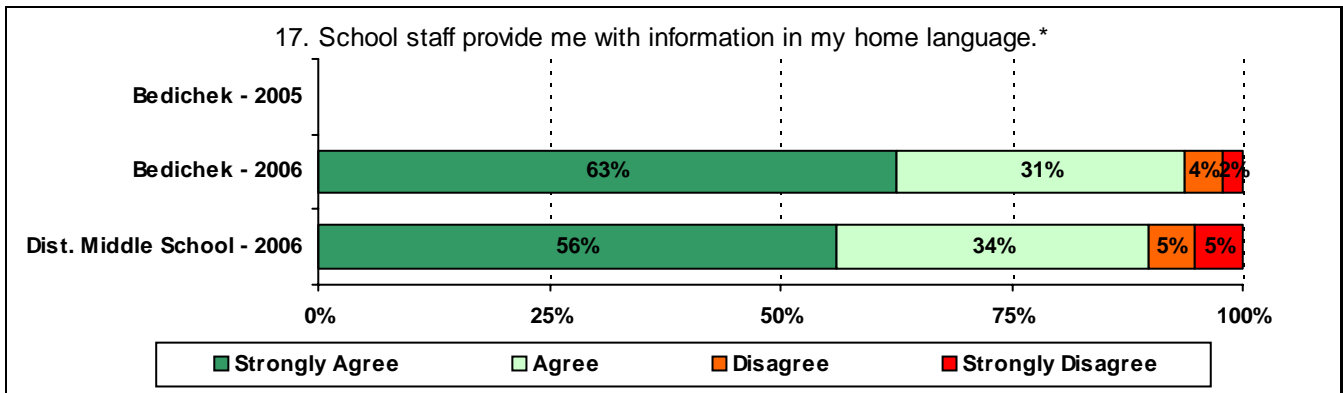












* Item(s) #17, #18, #19 added to the survey in 2006

**Strongly
Agree**

Agree

Disagree

**Strongly
Disagree**

23

