



In Spring 2010, 54 students returned surveys for Becker, representing 84% of eligible students from Becker (compared to the district Elementary School response rate, 87%). The table below shows the total number and percentage of students surveyed from each eligible grade at Becker in 2009-2010.

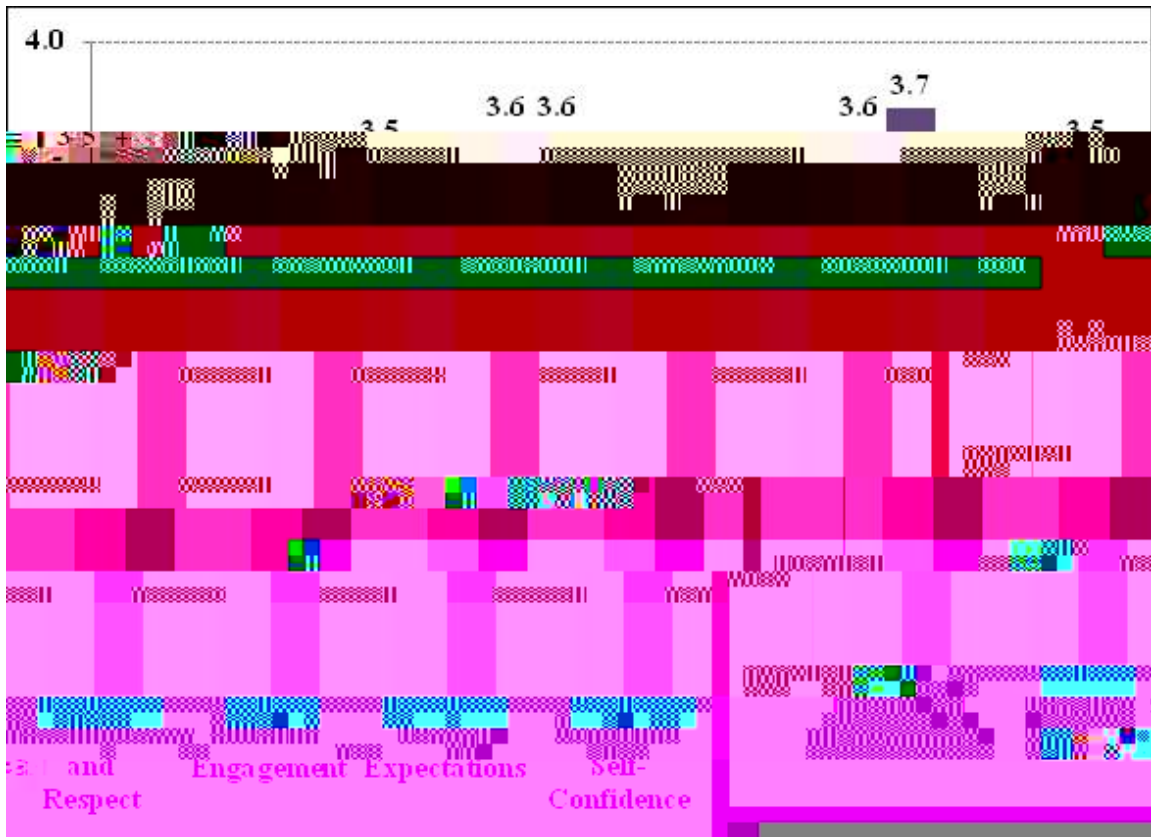
Table 1. Response Rate by Grade, 2009-2010

<b>Becker</b>		
<b>Grade</b>	<b>Population</b>	<b>Response Rate</b>
<b>3rd</b>	17	82%
<b>4th</b>	20	85%
<b>5th</b>	27	85%
<b>6th</b>	n/a	n/a
<b>Total</b>	64	84%

Survey results for Becker for the 2009-2010 school year are presented on the next page. Please note the green and red text boxes that highlight specific areas in which Becker excels, as well as areas in which Becker can improve. The appendix provides more detailed information regarding Becker's student climate survey results from 2007-2008 through 2009-2010. Please review the individual items on each subscale with particular attention to how Becker's average ratings have changed or remained consistent over time. Please note that some subscales have changed from previous years, making longitudinal comparisons inappropriate for some items and subscales. For items and subscales where longitudinal data are available, statistically meaningful changes are flagged with + or - symbols. Please share the results of this report with all campus staff and your Campus Advisory Council to inform campus improvement planning.

The graph below depicts Becker’s average student climate survey ratings, compared with average ratings for students across all Elementary Schools in 2009-2010. Scores of 3.0 or above are desirable, as indicated by the red dashed line. The first step in improving these characteristics is to examine the item-level scores for each area (see Appendix).

Student Climate Survey Subscale Scores for Becker and all Elementary Schools, 2009-2010



Note. The light purple bars represent 2009-2010 data for Becker and the dark purple bars represent 2009-2010 data for all Elementary Schools.

**Becker’s highest subscale score on the 2009-2010 Student Climate Survey was for Teacher Expectations, a new subscale in 2009-2010 that measures the expectations students perceive from their teachers. It is believed that Teacher Expectations are associated with academic achievement. Please think about what your school does to foster high expectations, and share your strategies with others.**

**Becker’s lowest subscale score on the 2009-2010 Student Climate Survey was for Behavioral Environment, which measures the extent to which students report feeling safe and respected at Becker. Higher ratings of Behavioral Environment have been associated with academic achievement. For resources on how to improve your campus’ Behavioral Environment, please visit AISD’s Positive Behavior Support (PBS) website: <http://www.austinisd.org/academics/sss/pbs/index.phtml>**

**APPENDIX**

Behavioral Environment	Becker			All Elementary Schools
	2007-08	2008-09	2009-10	
1. My classmates show respect to each other.	2.9	2.7	2.9+	3.0
2. My classmates show respect to other students who are different.	2.9	2.7	3.0+	3.1
3. I am happy with the way my classmates treat me.	3.0	2.9	3.0	3.1
14. Students at my school follow the school rules.	2.6	2.7	2.7	2.8
15. I feel safe at my school.	3.3	3.2	3.4+	3.5
16. I feel safe on the school property.	3.3 -	3.3	3.4	3.5
<b>Behavioral Environment average</b>	<b>3.0</b>	<b>2.9</b>	<b>3.1+</b>	<b>3.2</b>

*Note:* Response options range from 1 (strongly disagree) to 4 (strongly agree). It is desirable to have a response of at least 3.0.

Teacher Support	Becker			All Elementary Schools
	2007-08	2008-09	2009-10	
4. Teachers at this school care about their students.	3.9	3.6 -	3.7	3.9
17. Teachers give rewards or praise for good behavior.	3.7	3.2 -	3.2	3.3
28. Teachers give rewards or praise for good work.	3.5	3.3	3.1 -	3.2
32. My teachers care about how I do in school.	3.6	3.8	3.8	3.8
34. Teachers help students with personal problems.	3.5	3.5	3.4	3.5
<b>Teacher Support average</b>	<b>3.6</b>	<b>3.5 -</b>	<b>3.4</b>	<b>3.5</b>

*Note:* Response options range from 1 (strongly disagree) to 4 (strongly agree). It is desirable to have a response of at least 3.0.



Teacher Expectations	2007-08	2009-10	All Elementary Schools
13. My teachers believe I can learn.			3.7
18. My teachers expect me to do my best work.			3.9
19. My teachers challenge me to do better.			3.6
24. My teachers believe I can do well in school.			3.7
27. My teachers show me how to know if my work is good.			3.6
Teacher Expectations average			3.7

---

## REFERENCES

Schmitt, L., & Carney, D. (2008). *Austin ISD Board Level Reports*. Austin, TX: Austin Independent School District.

### Austin Independent School District

**Superintendent of Schools**

Meria Carstarphen, Ed.D.

**Office of Accountability**

William Caritj, M.Ed.

**Department of Program Evaluation**

Holly Williams, Ph.D.

**Authors**

Lindsay M. Lamb, Ph.D.

Lisa N. T. Schmitt, Ph.D.

**Board of Trustees**

Mark Williams, President

Vincent Torres, M.S., Vice President

Lori Moya, Secretary

Cheryl Bradley

Annette LoVoi, M.A.

Christine Brister

Robert Schneider

Tamala Barksdale

Sam Guzman