



## 2006-2007 AISD Parent Survey Results

### Becker Elementary School

The following report contains the results of the 2006-2007 AISD Parent Survey for your campus and all AISD schools at your level. The first section of this report provides a comparison of the campus demographics and the demographics reported by parents who responded to the survey from your campus. The next section describes the percentages of

**How many parents responded to the survey in 2005-2006 and 2006-2007, and how does this compare to the number of students in the population each year?**

	Campus	District EL	District MS	District HS
	73			
	235			
	<b>31.1%</b>			
	41			
	226			
	<b>18.1%</b>			

% of Students, as Reported by Campus	
Asian	0.4%
Hispanic	79.6%
Native American	0.0%
White	5.3%

**What did parents report as their child's grade, and how does this compare to the grade level distribution of the student population?**

<b>Grade</b>	<b>% of Students, as Reported by Campus Parent Respondents</b>	<b>% of Students in Campus Population</b>
<b>EC</b>	2.7%	4.9%
<b>PK</b>	18.9%	14.2%
<b>K</b>	8.1%	10.2%
<b>1st</b>	13.5%	15.5%
<b>2nd</b>	24.3%	15.5%
<b>3rd</b>	5.4%	18.6%
<b>4th</b>	2.7%	11.1%
<b>5th</b>	24.3%	10.2%
<b>6th</b>	N/A	N/A

Note: Student population data are based on Fall PEIMS data submitted by the district to TEA, and may differ from the official AEIS report.

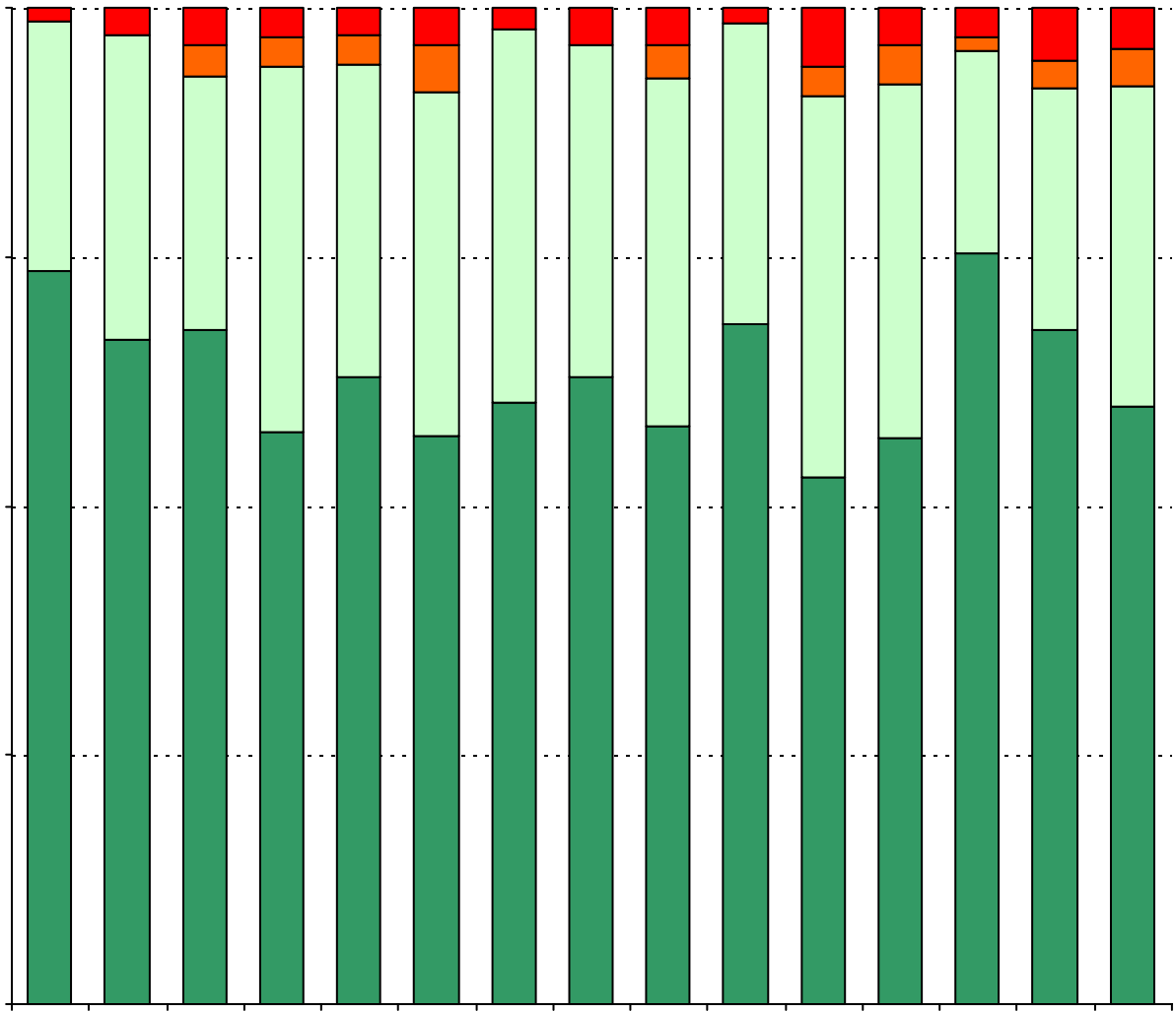
**USING THE RESULTS OF THE AISD PARENT SURVEY**

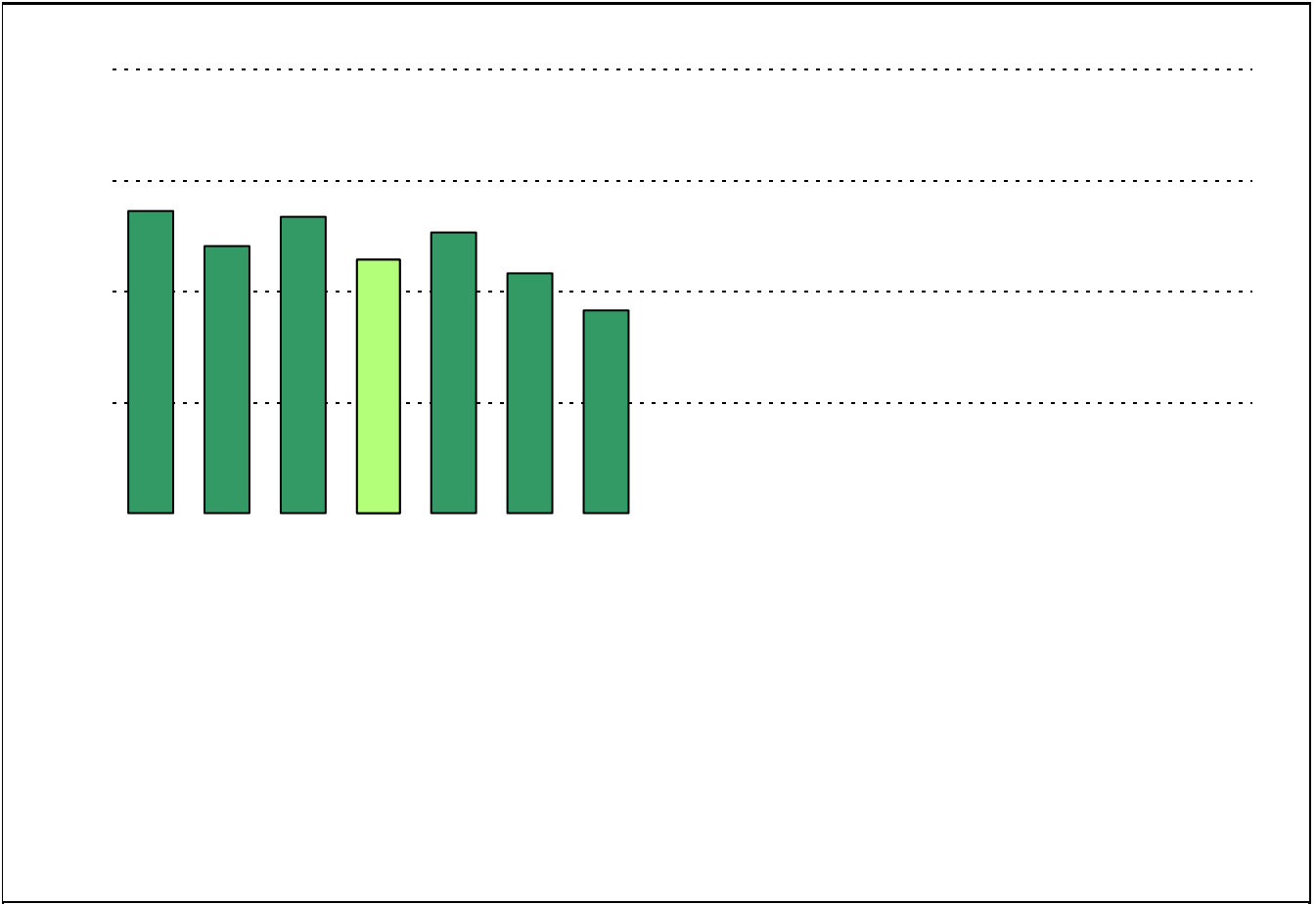
Each survey item is presented below, followed by a bar graph containing your school's results for two years and this year's results for all campuses at your level. You will be able to identify areas in which your school's results have changed over time, and you will be able to compare the responses of your school's parents to those of parents at your level district-wide.

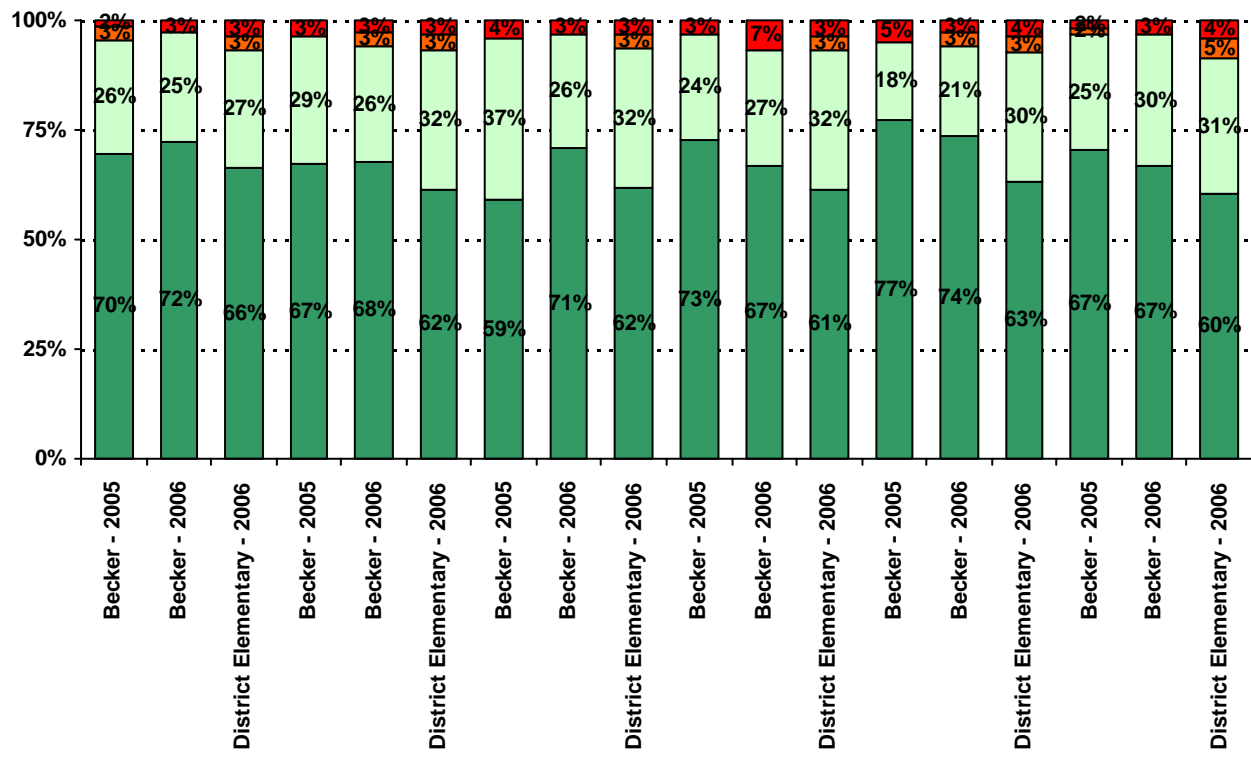
Please examine your results to determine areas of strength and opportunities for improvement. Areas of strength can be identified by large percentages of parents who "Strongly Agree" or "Agree" with a statement. Opportunities for improvement can be identified by large percentages of parents who "Disagree" or "Strongly Disagree" with a statement. In addition, please look for patterns in which one staff category consistently receives more positive or negative responses than other staff categories. This will help you to identify opportunities for praise and areas in which training may be necessary. District responses for all schools at your level are also provided for comparison with 2006-2007 responses from your school. If your campus percentages are very different from the percentages reported by parents district-wide, please consider potential reasons for discrepancies.

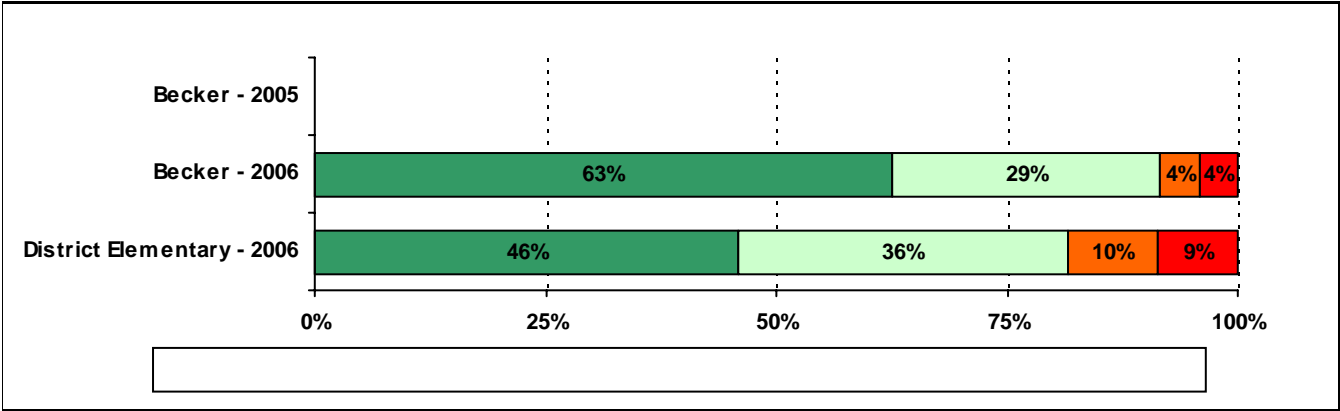
Longitudinal data are provided, when available. It is important to look at the responses from year to year to determine whether there are any areas in which percentages have changed by more than ti-0.0004swsidited.

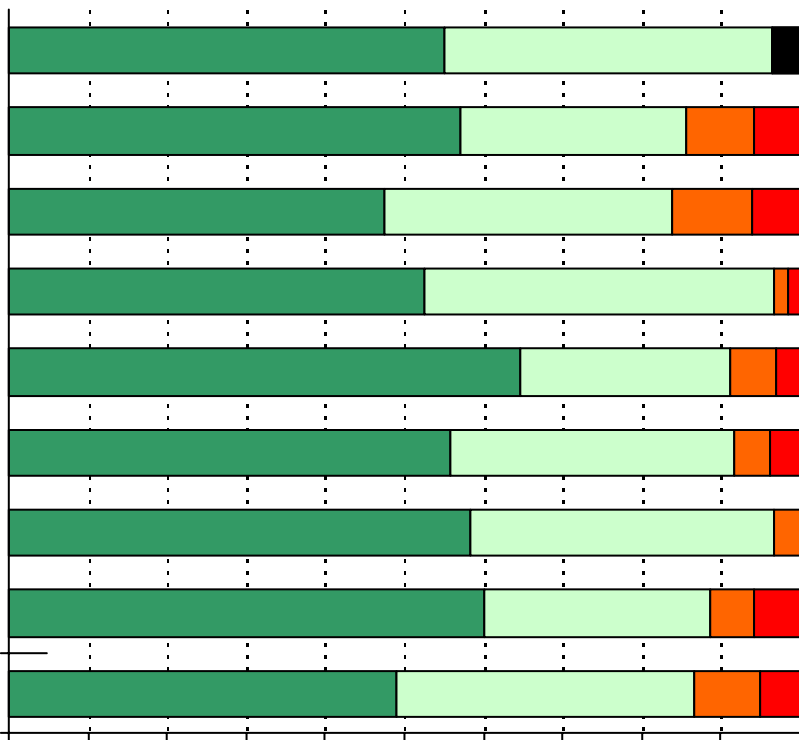
58%





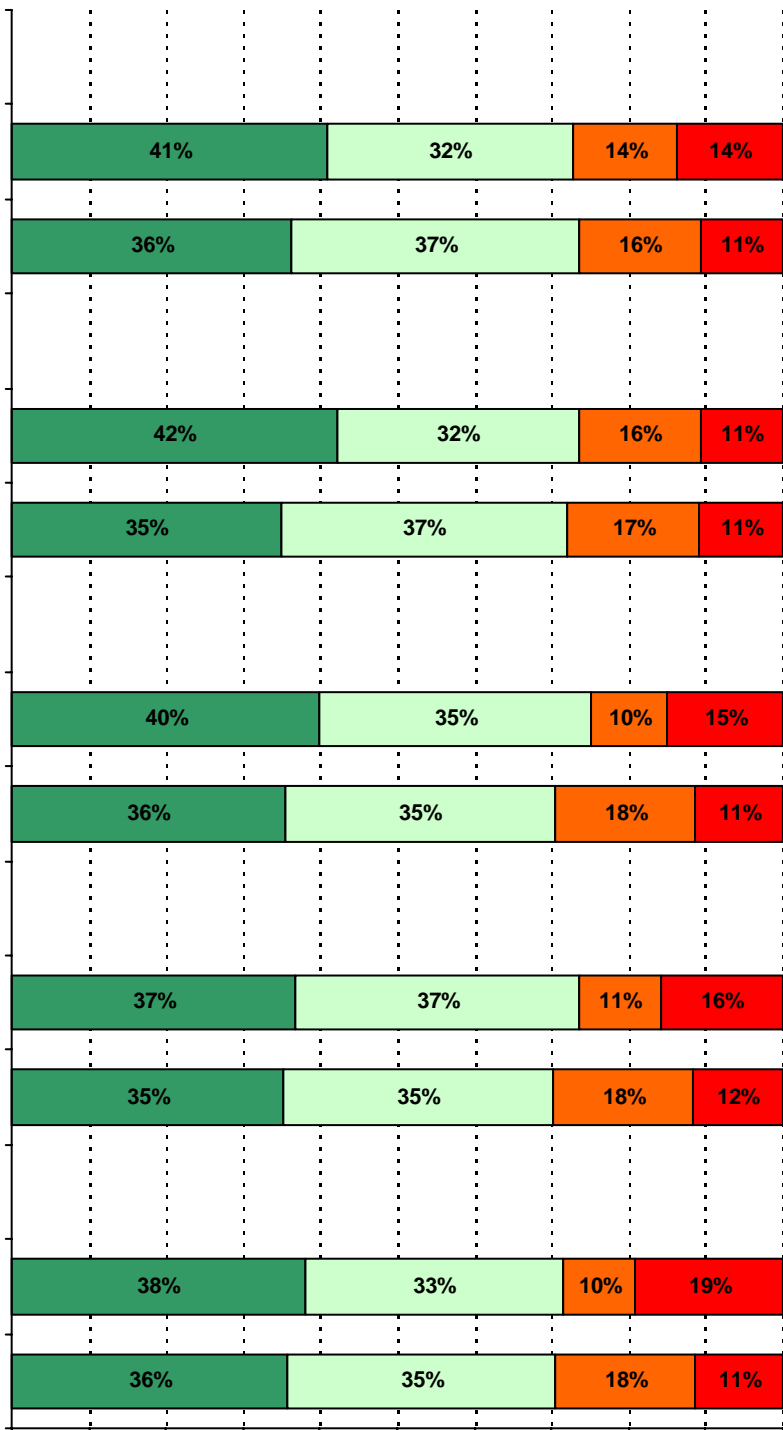




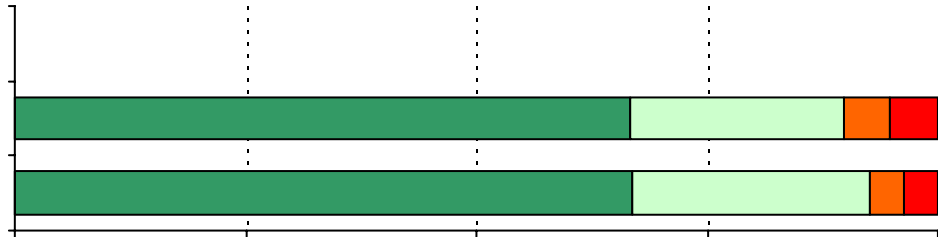
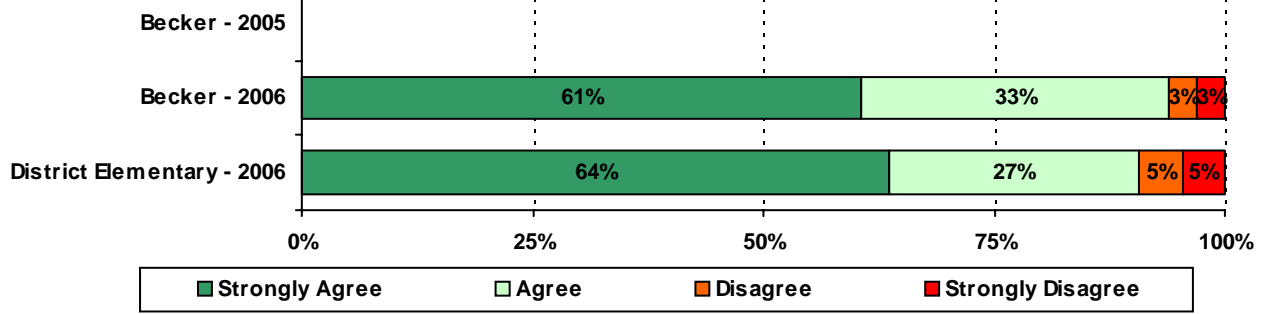


**Required  
curriculum**

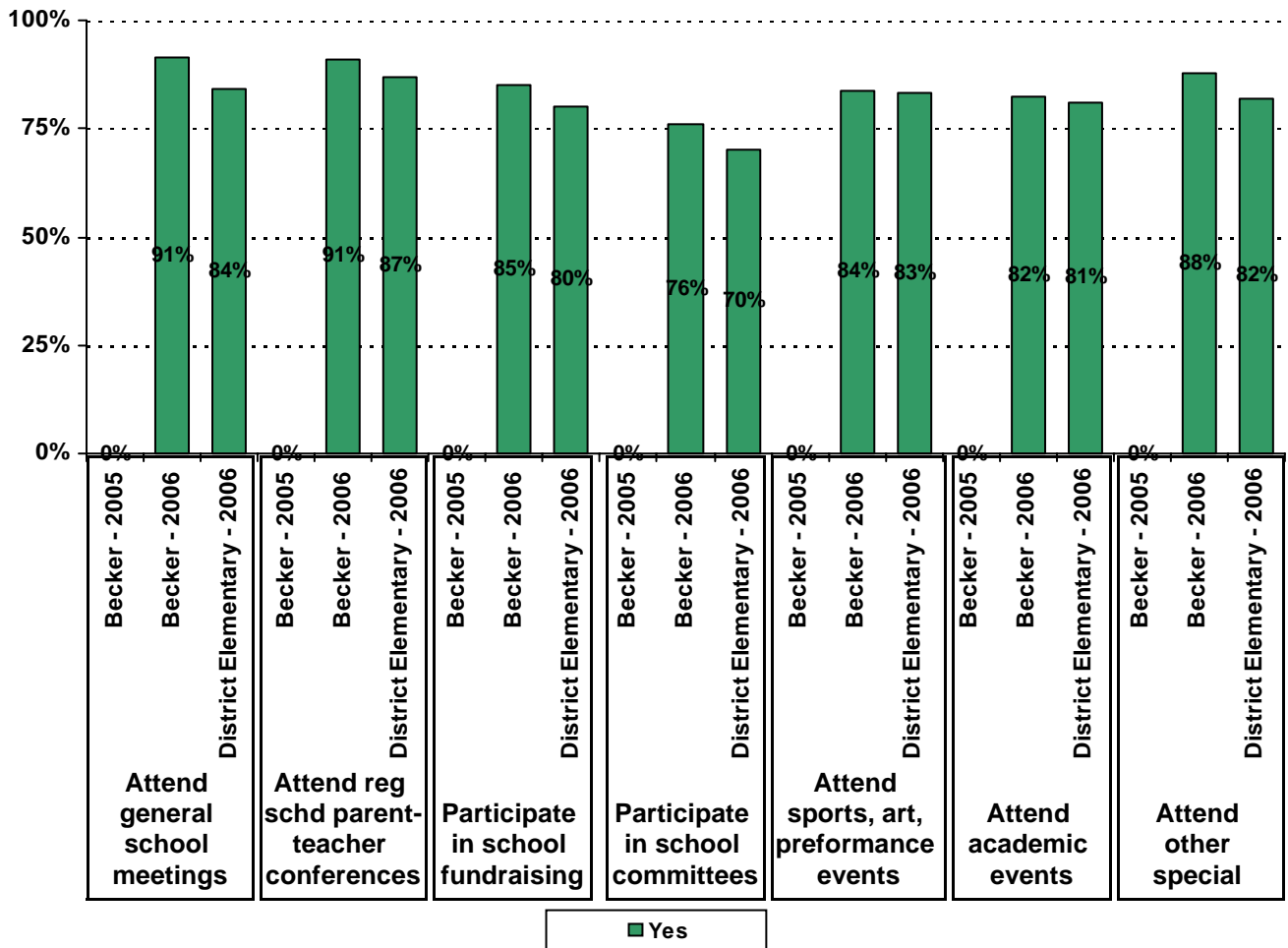




17. School staff provide me with information in my home language.\*

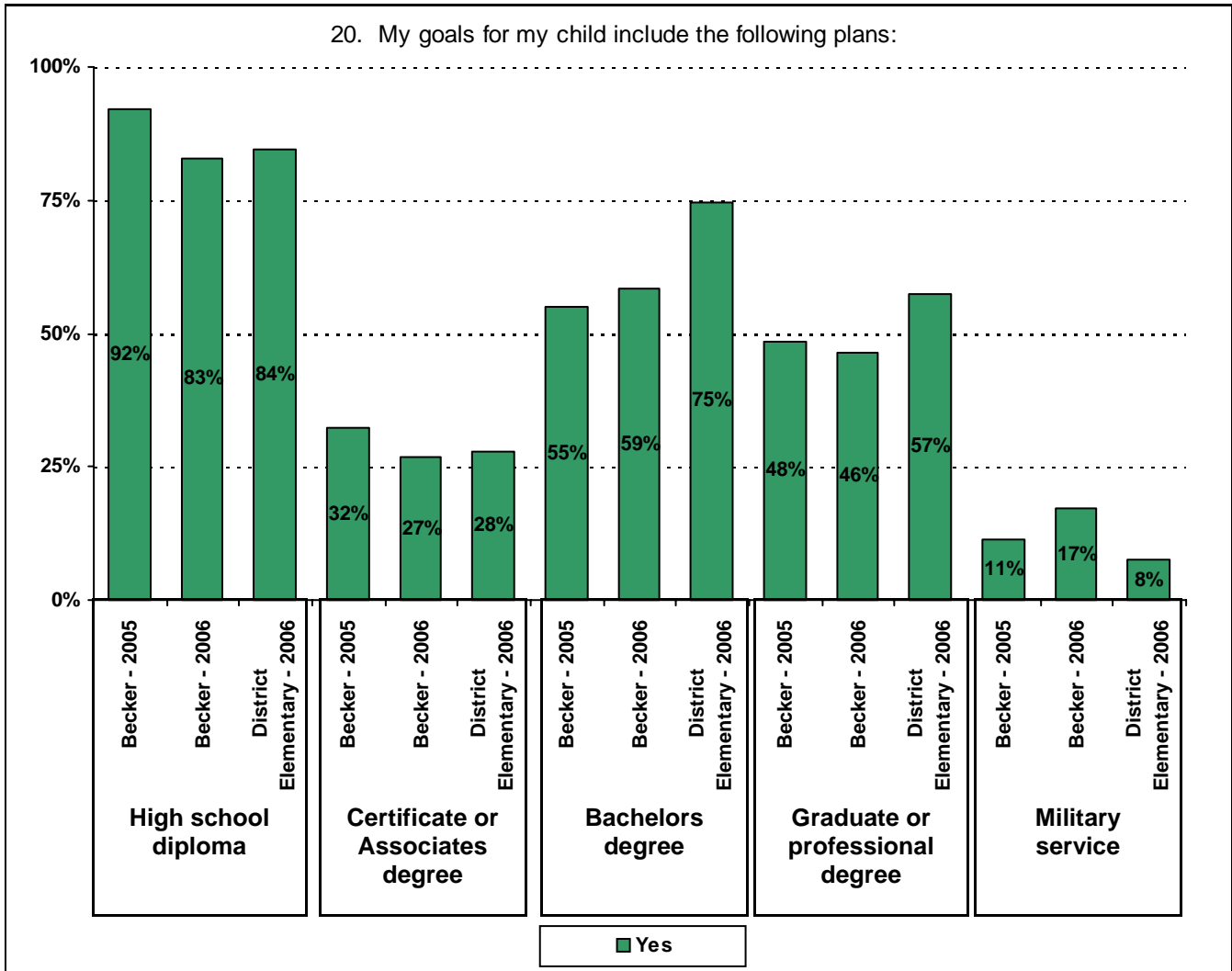


19. Which of the following activities do you participate in at your child's school:\*



\* Item(s) #17, #18, #19 added to the survey in 2006

20. My goals for my child include the following plans:



Respondents who selected Certificate, Associates, Bachelors, or Graduate degree were included in the "Yes" percentage for High School diploma, even if they did not select the High School diploma option. Respondents who selected Graduate degree were included in the "Yes" percentage for Bachelors degree, even if they did not select the Bachelors degree option.

## Item Response Details

Number of Becker Elementary School Parent Responses, by Response Option

		Strongly Agree	Agree	Disagree	Strongly Disagree	Don't Know/NA
<b>4.</b>	<b>n = 29</b>		5	24		
<b>5a.</b>	<b>n = 39</b>	25	9	1	2	2
<b>5b.</b>	<b>n = 36</b>	18	13	1	2	2
<b>5c.</b>	<b>n = 35</b>	17	9	0	1	8
<b>5d.</b>	<b>n = 35</b>	22	11	1	1	0
<b>5e.</b>	<b>n = 36</b>	24	11	0	1	0
<b>6a.</b>	<b>n = 35</b>	20	8	1	1	5
<b>6b.</b>	<b>n = 35</b>	16	9	2	2	6
<b>6c.</b>	<b>n = 34</b>	14	8	0	1	11
<b>6d.</b>	<b>n = 34</b>	19	9	1	1	4
<b>6e.</b>	<b>n = 36</b>	21	11	2	1	1
<b>7a.</b>	<b>n = 36</b>	18	11	0	1	6
<b>7b.</b>	<b>n = 32</b>	10	11	3	2	6
<b>7c.</b>	<b>n = 35</b>	13	10	0	2	10
<b>7d.</b>	<b>n = 33</b>	13	12	1	1	6
<b>7e.</b>	<b>n = 36</b>	21	12	1	1	1
<b>8a.</b>	<b>n = 36</b>	13	14	1	2	6
<b>8b.</b>	<b>n = 34</b>	8	14	0	3	9
<b>8c.</b>	<b>n = 34</b>	9	14	0	1	10
<b>8d.</b>	<b>n = 35</b>	12	11	2	2	8
<b>8e.</b>	<b>n = 36</b>	15	16	1	1	3
<b>9a.</b>	<b>n = 37</b>	25	7	1	1	3
<b>9b.</b>	<b>n = 35</b>	20	8	0	2	5
<b>9c.</b>	<b>n = 36</b>	22	8	0	1	5
<b>9d.</b>	<b>n = 38</b>	23	9	1	1	4
<b>9e.</b>	<b>n = 36</b>	26	9	0	1	0
<b>9f.</b>	<b>n = 36</b>	22	10	0	1	3
<b>10.</b>	<b>n = 35</b>	15	7	1	1	11
<b>11.</b>	<b>n = 37</b>	25	8	1	2	1
<b>12.</b>	<b>n = 34</b>	25	7	0	1	1

