



## 2006-2007 AISD Parent Survey Results

### Barton Hills Elementary School

The following report contains the results of the 2006-2007 AISD Parent Survey for your campus and all AISD schools at your level. The first section of this report provides a comparison of the campus demographics and the demographics reported by parents who responded to the survey from your campus. The next section describes the percentages of parents selecting specific responses for each survey item, and the final section indicates the actual number of parents who selected each response option. Campus survey results should be examined for areas of strength and opportunities for improvement. Results for all AISD schools

	79 355 <b>22.3%</b>
	75 358 <b>20.9%</b>

	1.5%	
	4.5%	3.4%
	19.7%	22.3%
	0.0%	0.0%
	74.2%	71.8%

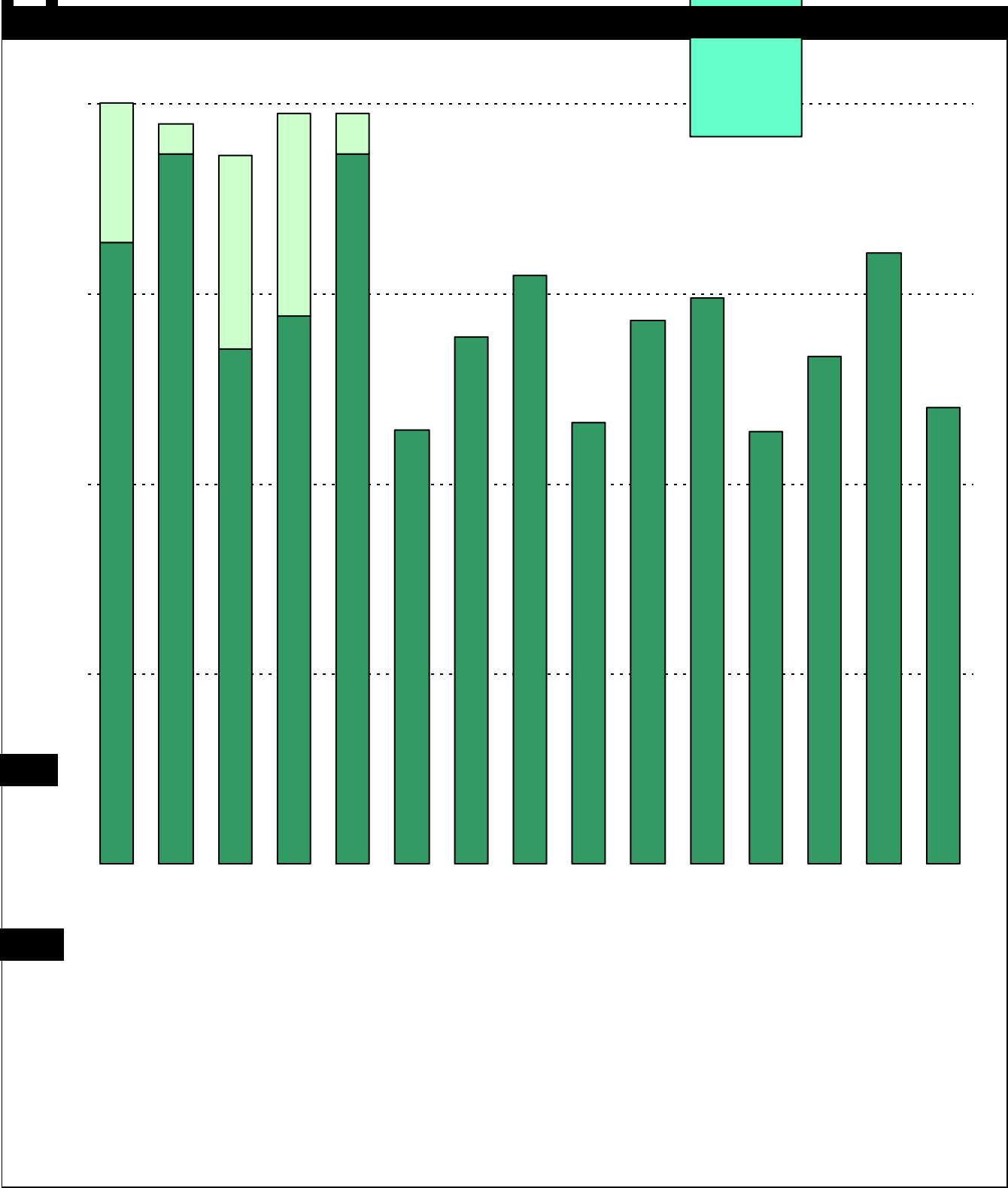
	N/A	N/A
	N/A	N/A
	15.3%	13.4%
	20.8%	20.4%
	12.5%	13.4%
	11.1%	16.2%
	26.4%	15.1%
	12.5%	14.0%
	1.4%	7.5%

Note: Student population data are based on Fall PEIMS data submitted by the district to TEA, and may differ from the official AEIS report.

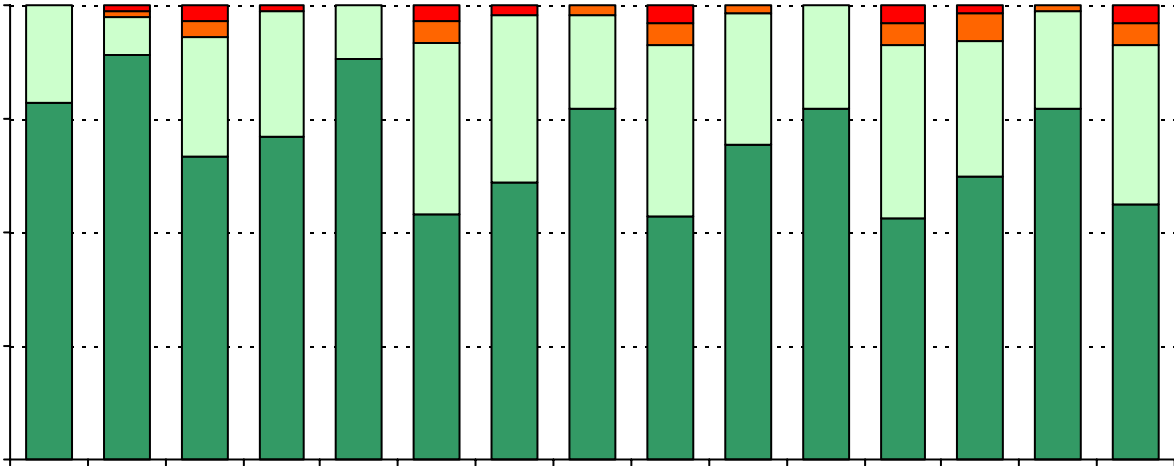
Each survey item is presented below, followed by a bar graph containing your school’s results for two years and this year’s results for all campuses at your level. You will be able to identify areas in which your school’s results have changed over time, and you will be able to compare the responses of your school’s parents to those of parents at your level district-wide.

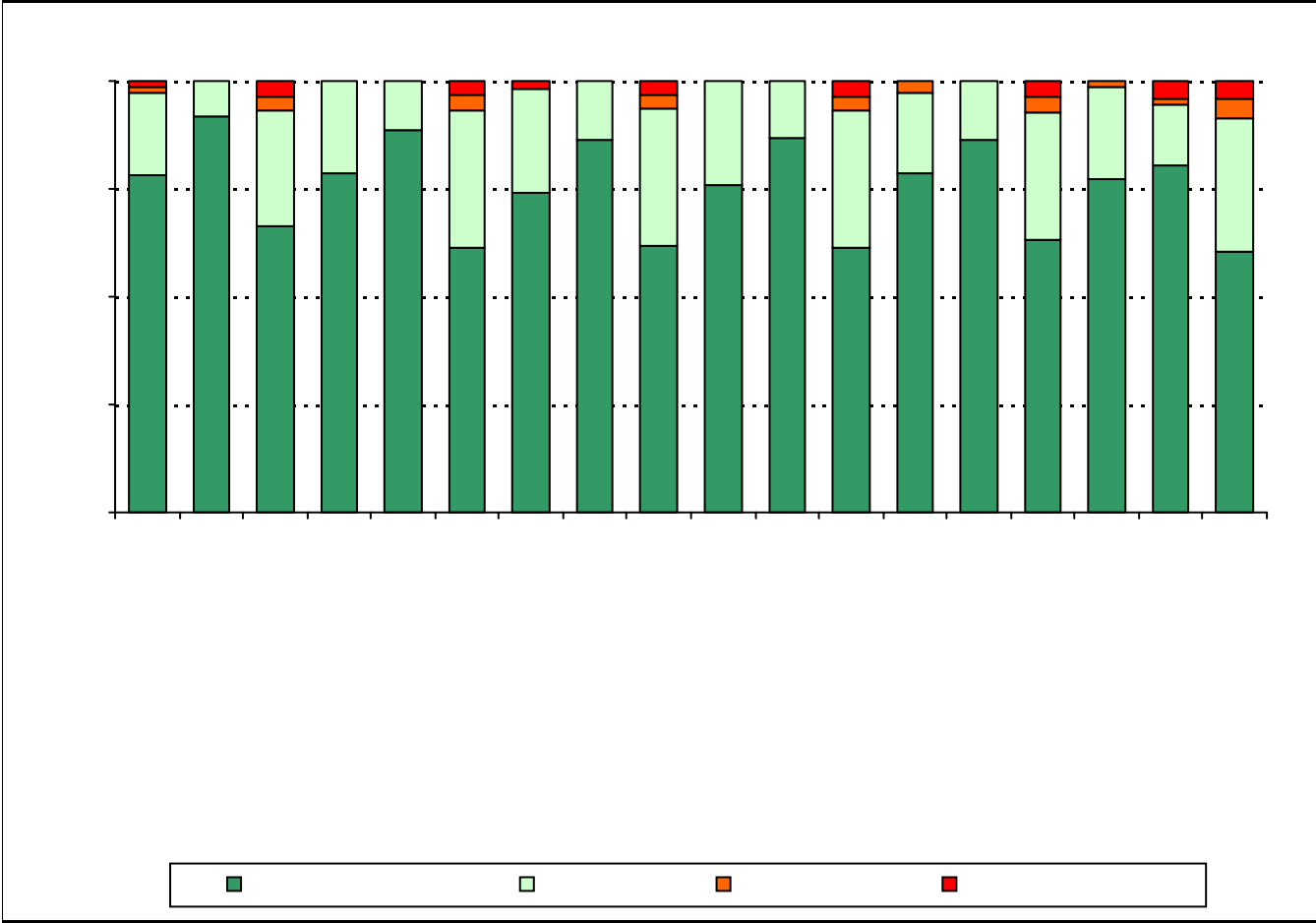
Please examine your results to determine areas of strength and opportunities for improvement. Areas of strength can be identified by large percentages of parents who “Strongly Agree” or “Agree” with a statement. Opportunities for improvement can be identified by large percentages of parents who “Disagree” or “Strongly Disagree” with a statement. In addition, please look for patterns in which one staff category consistently receives more positive or negative responses than other staff categories. This will help you to identify opportunities for praise and areas in which training may be necessary. District responses for all schools at your level are also provided for comparison with 2006-2007 responses from your school. If your campus percentages are very different from the percentages reported by parents district-wide, please consider potential reasons for discrepancies.

Longitudinal data are provided, when available. It is important to look at the responses from year to year to determine whether there are any areas in which percentages have changed by more than a few points. Keep in mind that when response rates are low, the percentages may appear to fluctuate more without necessarily signaling a serious shift in perception. Also, think about any changes in campus policies and practices that may have resulted in positive or negative changes. How can campus staff continue to support the positive changes? How might your staff address any undesirable changes that may have occurred? Because parental perceptions of treatment by school personnel are based on interactions with a variety of school staff, representatives from all areas should be included in discussions regarding school planning and improvement processes.

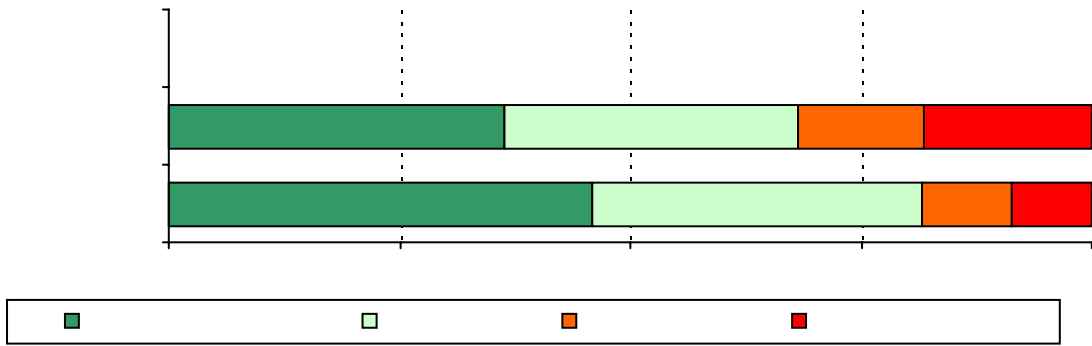


6. The following school staff provide me with opportunities for two-way communication.

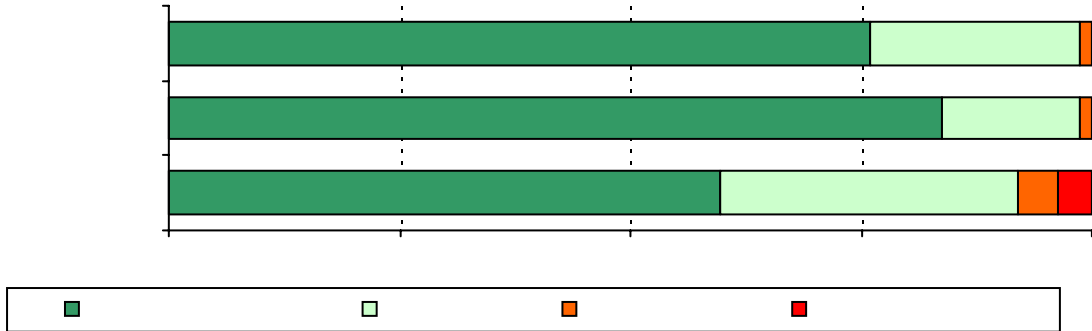




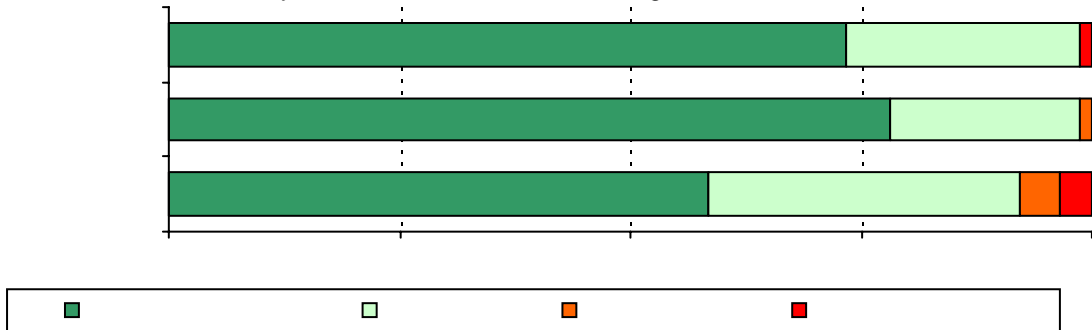
10. The Parent Support Specialist at my Child's Scho



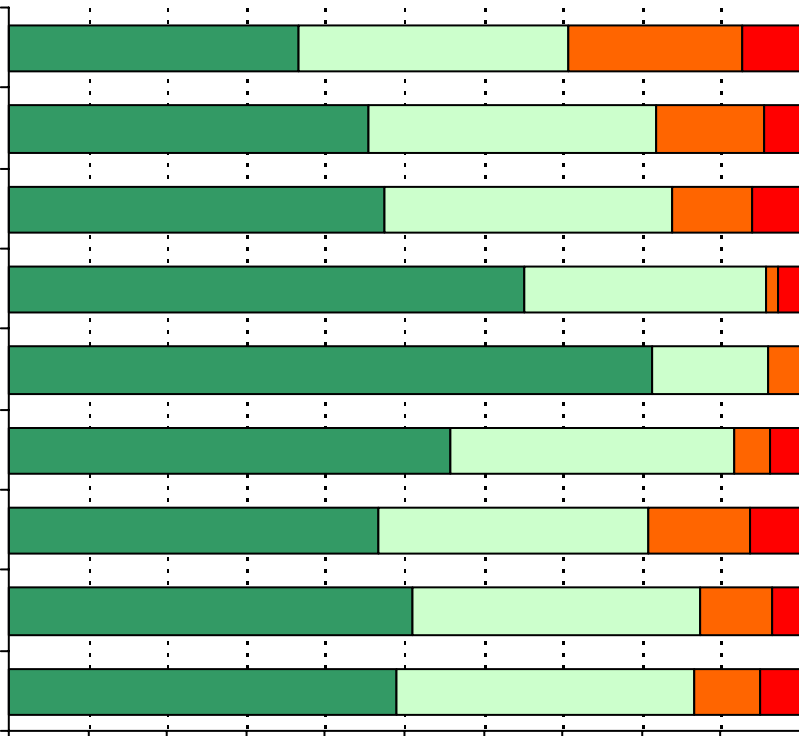
11. School staff provide me with positive feedback about my child.



12. My child's school is a safe learning environment.



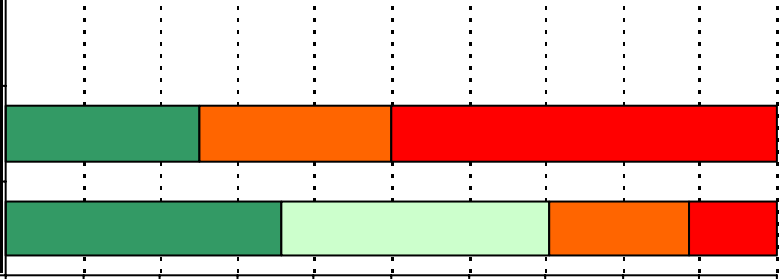
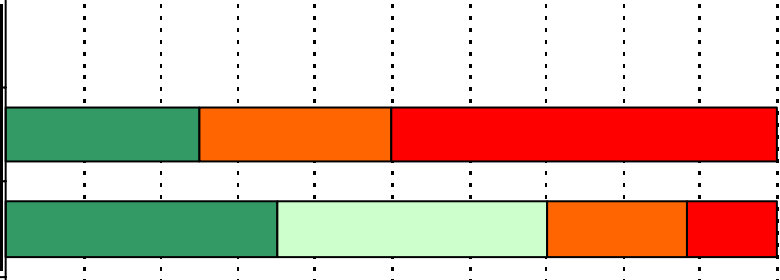
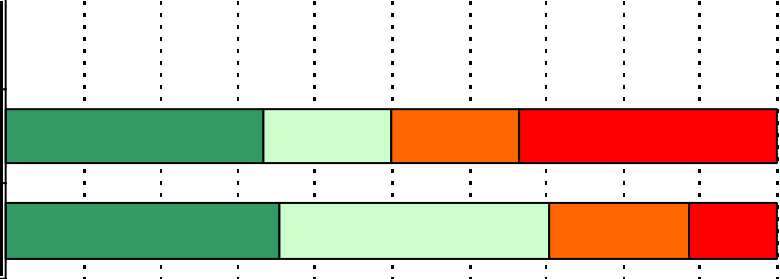
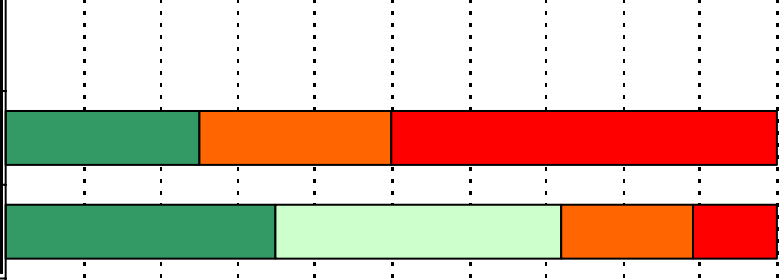
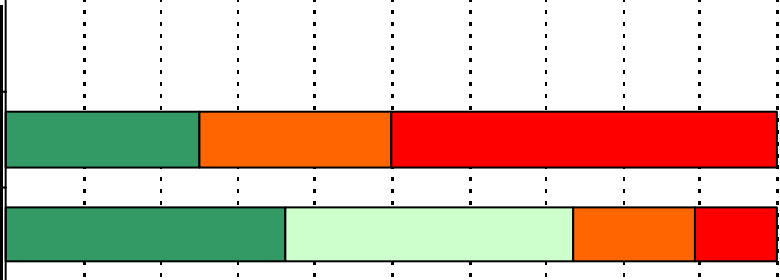
14. School staff provide me with enough information about the following programs:

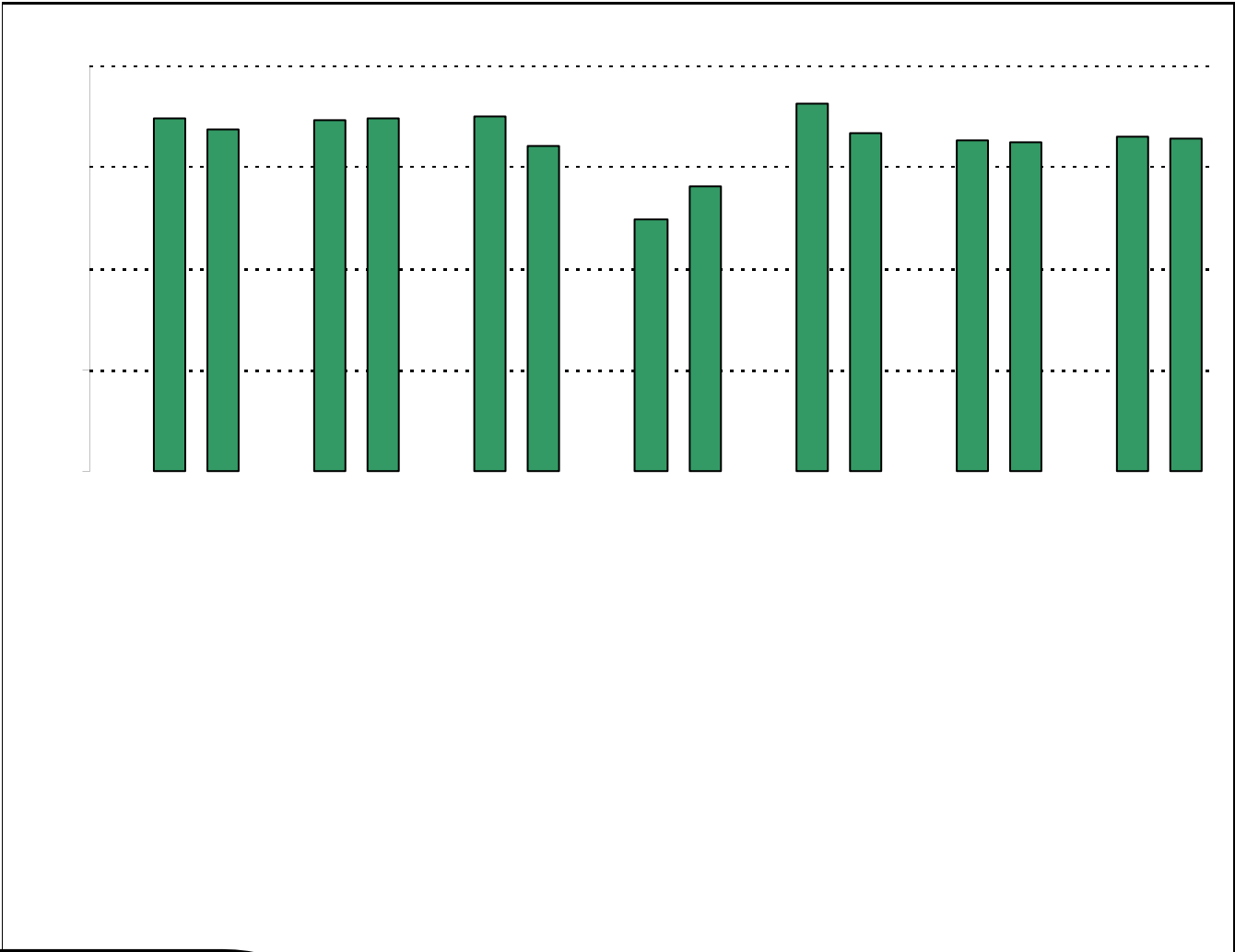






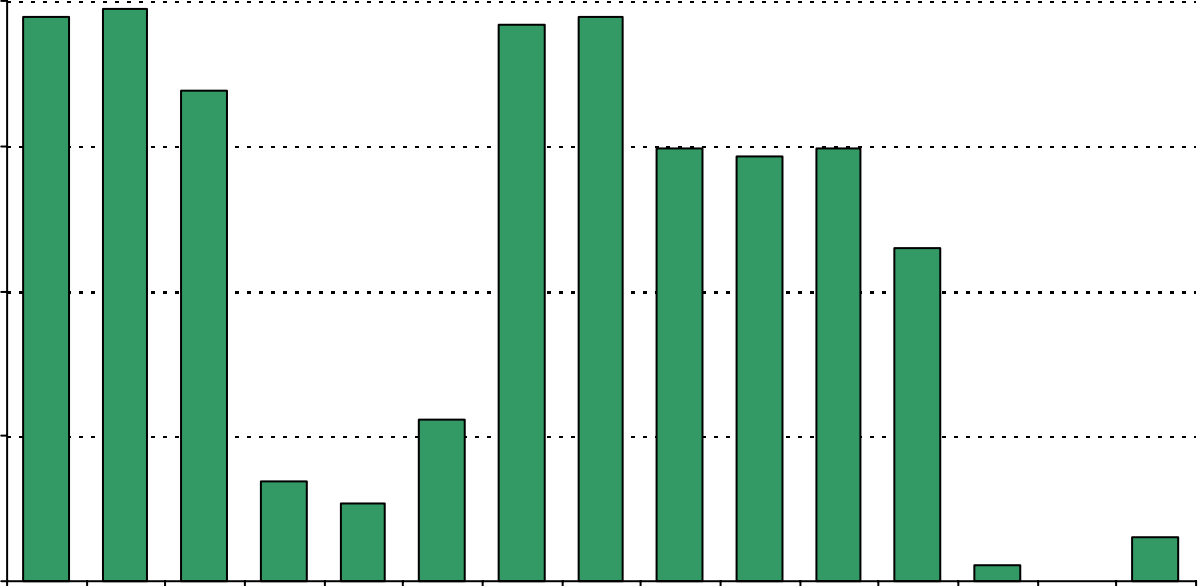
16. School staff provide me with useful information about their (a.002 f98.46 Tm -1.02 rm9uPb)5.6(o)-6.5st-g 2.2(iPnr topic





the survey in 2006

20. My goals for my child include the following plans:



\_\_\_\_\_

Number of Barton Hills Elementary School Parent Responses, by Response Option

	57	13	0	1	3
	32	11	0	0	31
	41	12	0	0	21
	69	4	1	0	0
	69	3	2	0	0
	51	14	1	0	9
	27	8	0	0	38
	37	10	1	0	25
	53	7	0	0	13
	64	6	1	1	1
	38	19	1	0	16
	18	9	2	0	43
	25	10	2	0	35
	35	15	3	0	21
	64	7	1	1	1
	40	11	3	0	19
	21	3	0	0	45
	29	4	0	0	37
	39	5	0	0	27
	65	5	1	1	1
	58	9	0	0	8
	39	6	0	0	27
	51	8	0	0	14
	62	8	0	0	4
	67	6	0	0	1
	57	10	1	3	3
	62	11	1	0	1
	57	15	1	0	0

