



2006-2007 AISD Parent Survey Results

Barrington Elementary School

The following report contains the results of the 2006-2007 AISD Parent Survey for your campus and all AISD schools at your level. The first section of this report provides a comparison of the campus demographics and the demographics reported by parents who responded to the survey from your campus. The next section describes the percentages of

How many parents responded to the survey in 2005-2006 and 2006-2007, and how does this compare to the number of students in the population each year?

	Campus	District EL	District MS	District HS
	123			
	753			
	236			
	745			

What did parents report as their child's ethnicity, and how does this compare to the ethnic distribution of the student population?

Ethnicity	% of Students, as Reported by Campus Parent Respondents	% of Students in Campus Population
Asian	9.4%	0.3%
Hispanic	83.2%	84.3%
Native American	3.0%	0.0%
White	4.0%	3.9%

What did parents report as their child's grade, and how does this compare to the grade level distribution of the student population?

Grade	% of Students, as Reported by Campus Parent Respondents	% of Students in Campus Population
EC	0.0%	2.0%
PK	16.8%	13.0%
K	7.7%	16.8%
1st	13.6%	16.5%
2nd	9.1%	11.5%
3rd	11.8%	11.7%
4th	17.3%	13.6%
5th	13.6%	10.2%
6th	10.0%	4.7%

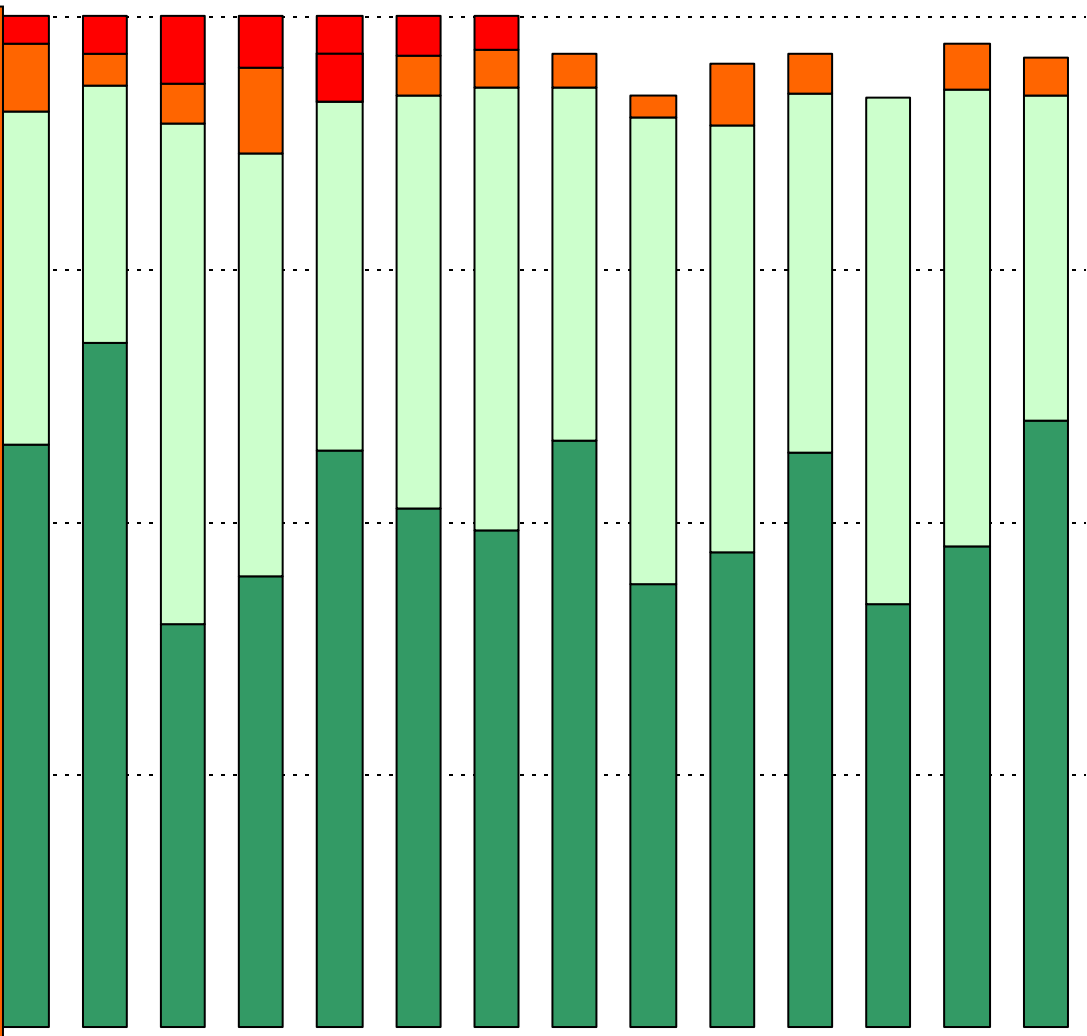
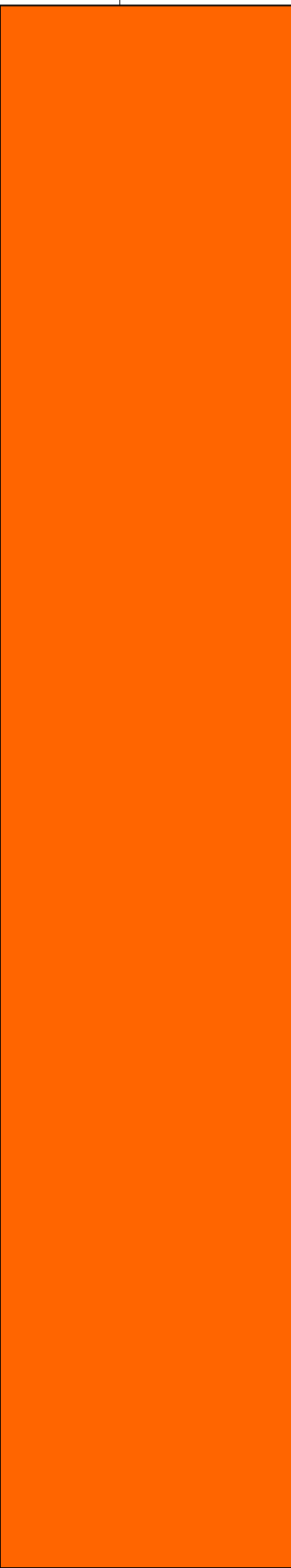
Note: Student population data are based on Fall PEIMS data submitted by the district to TEA, and may differ from the official AEIS report.

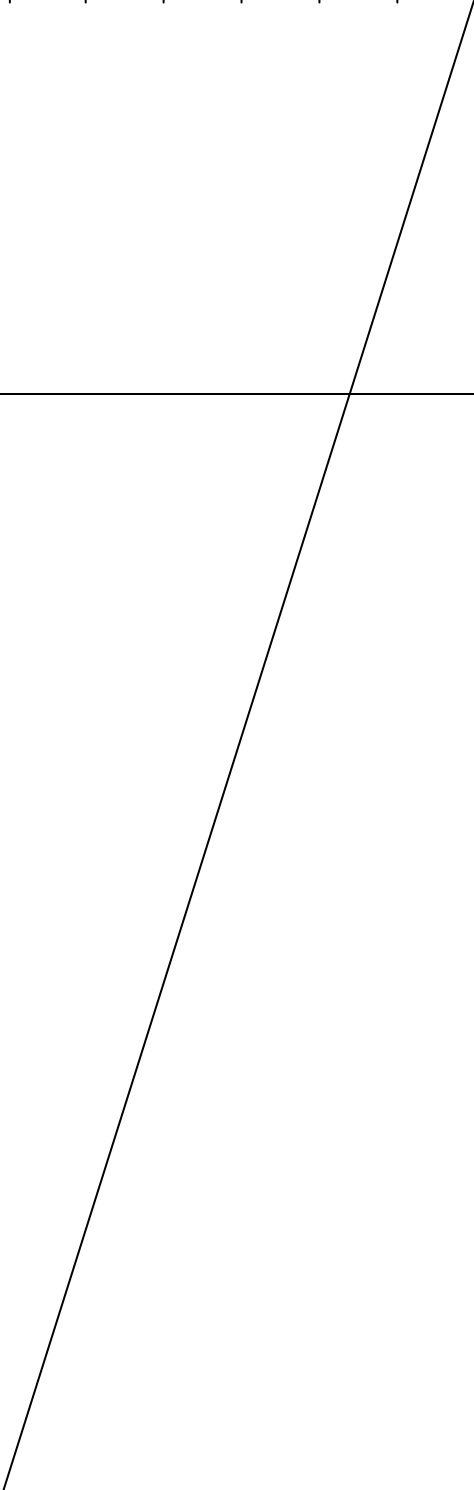
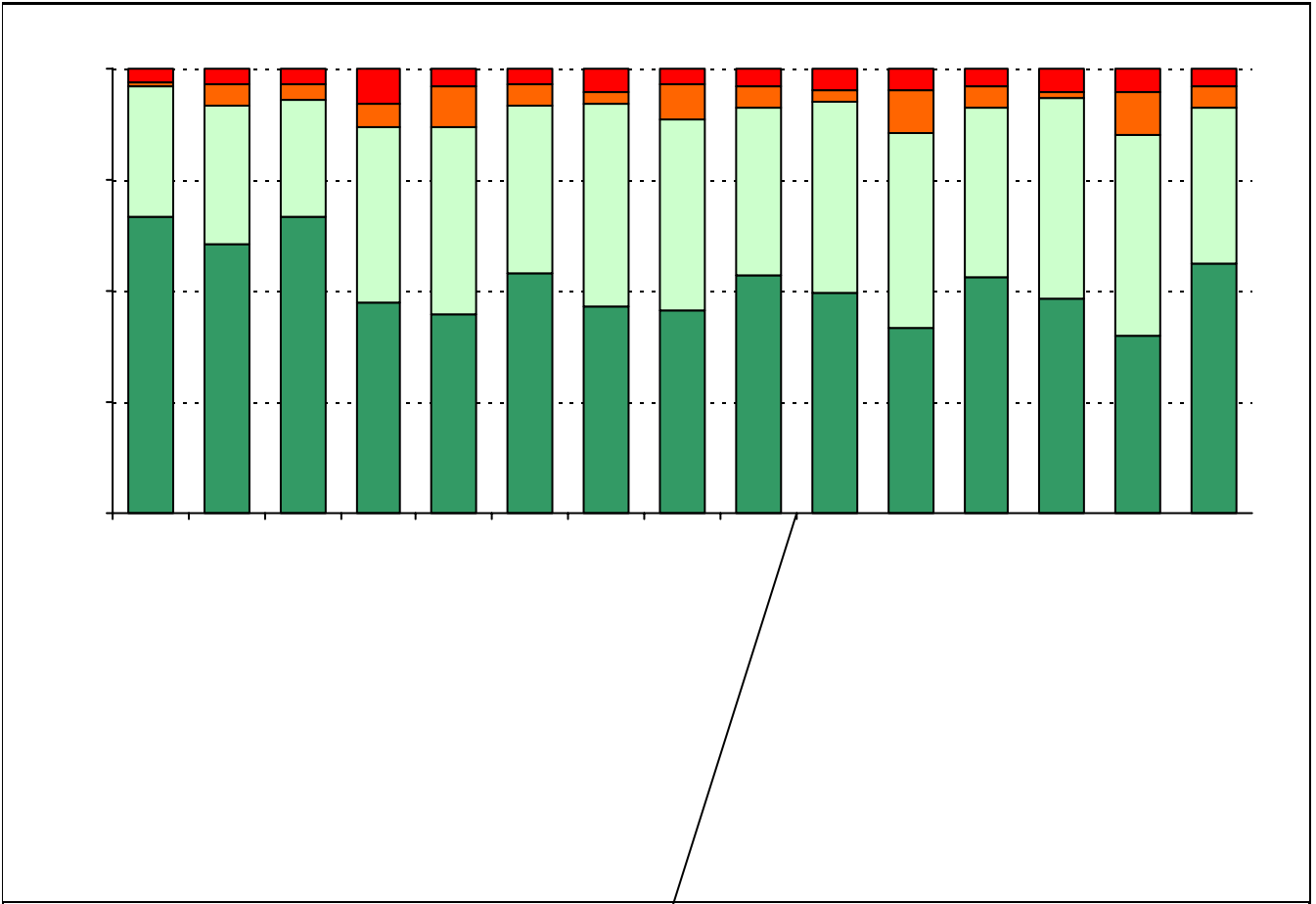
USING THE RESULTS OF THE AISD PARENT SURVEY

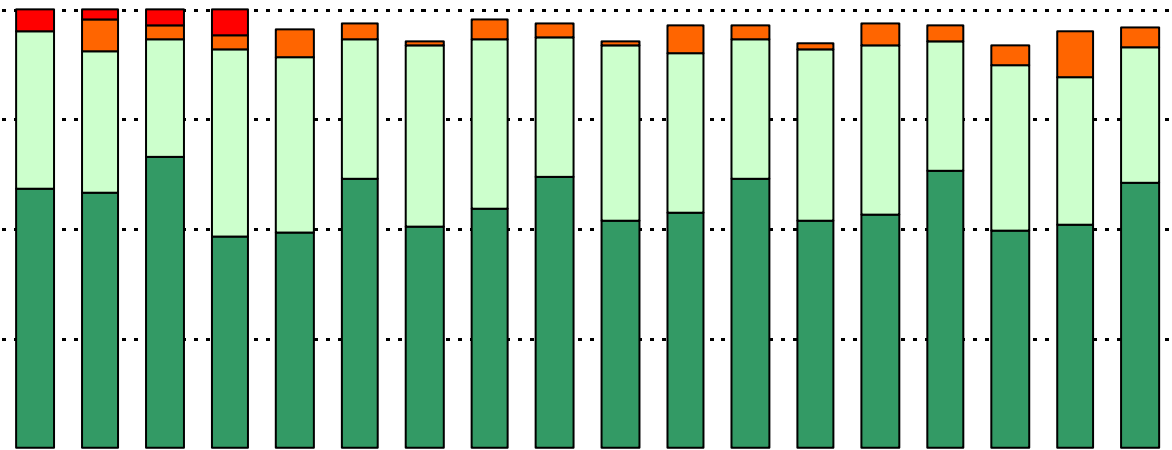
Each survey item is presented below, followed by a bar graph containing your school's results for two years and this year's results for all campuses at your level. You will be able to identify areas in which your school's results have changed over time, and you will be able to compare the responses of your school's parents to those of parents at your level district-wide.

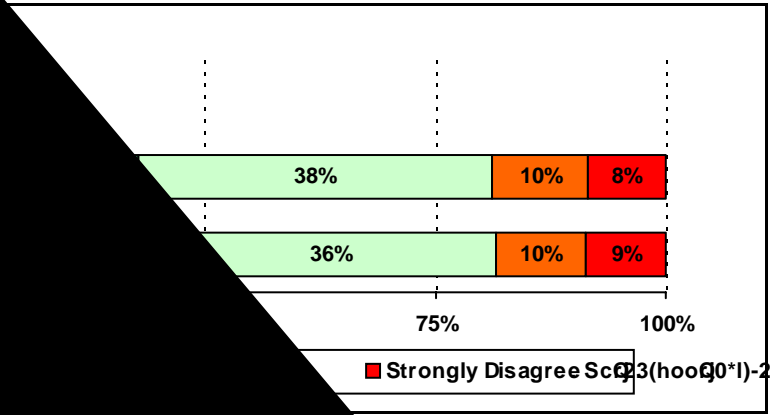
Please examine your results to determine areas of strength and opportunities for improvement.

Areas of strength can be identified by large percentages of parents who "Strongly Agree" or "Agree" with items. Areas of concern can be identified by large percentages of parents who "Disagree" or "Strongly Disagree" with items. Areas of opportunity can be identified by large percentages of parents who "Disagree" or "Strongly Disagree" with items.

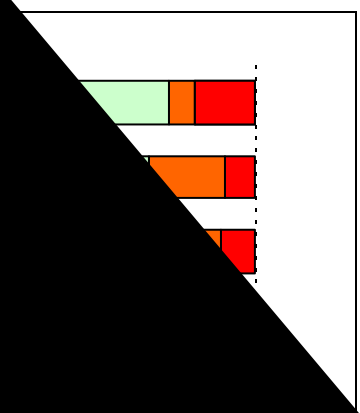


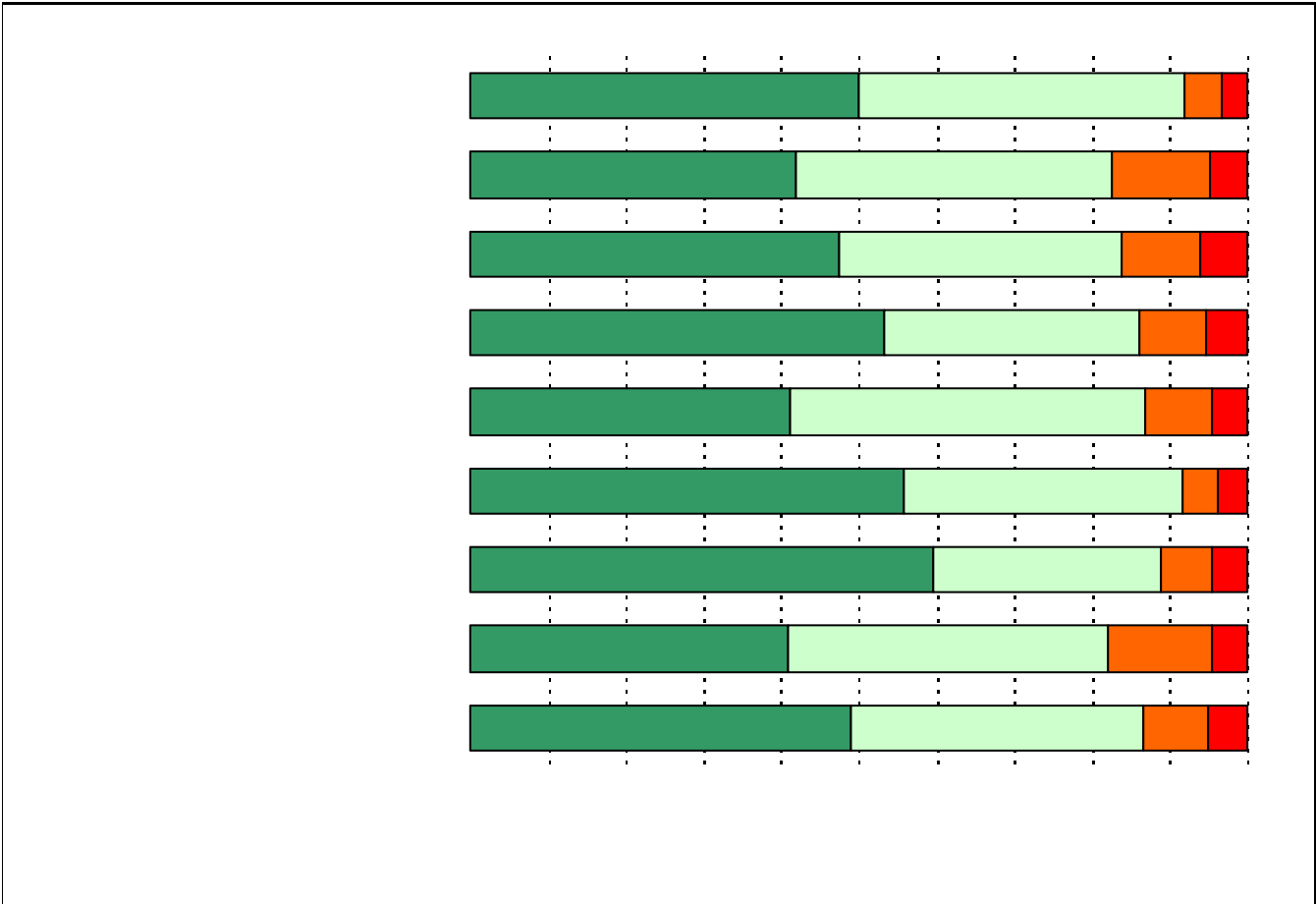




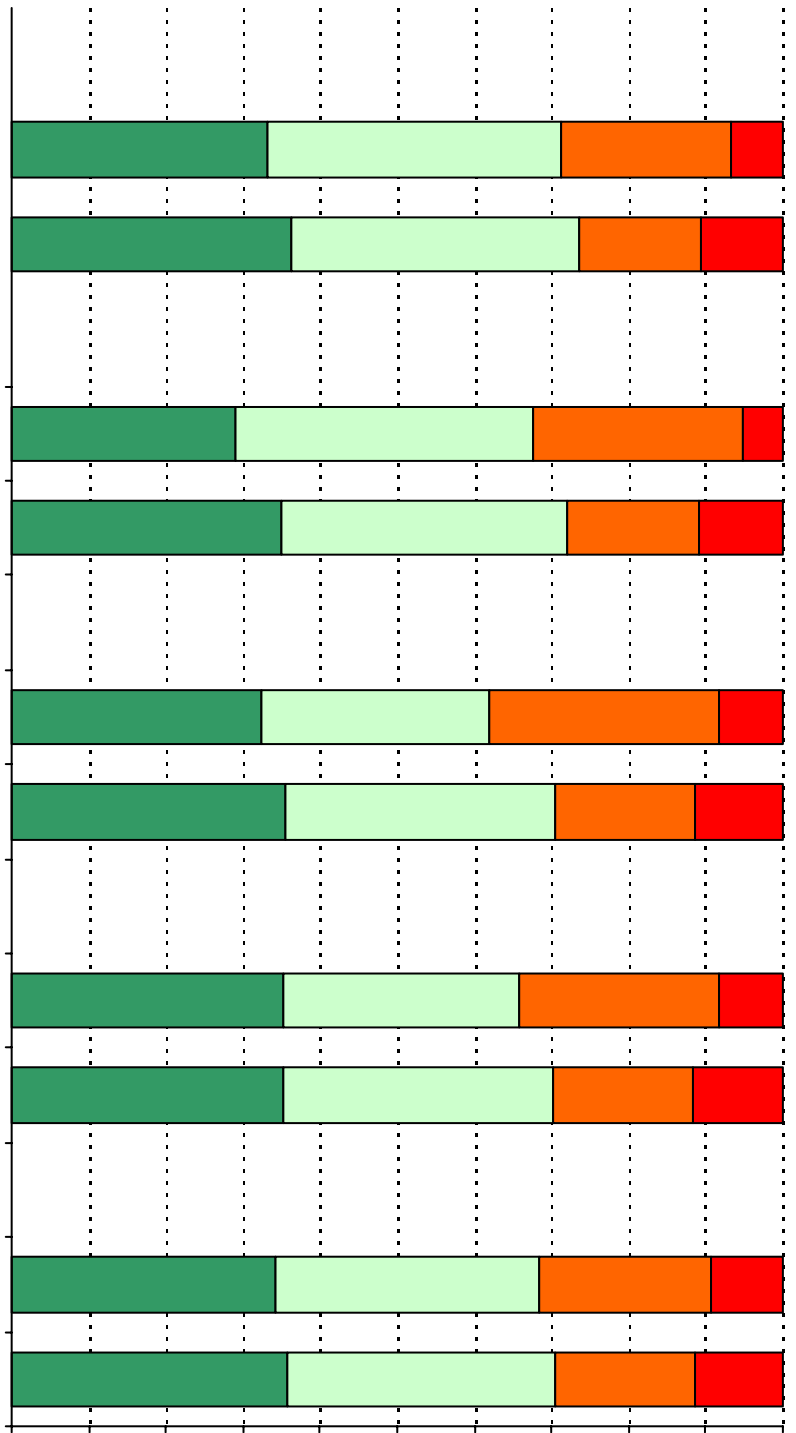


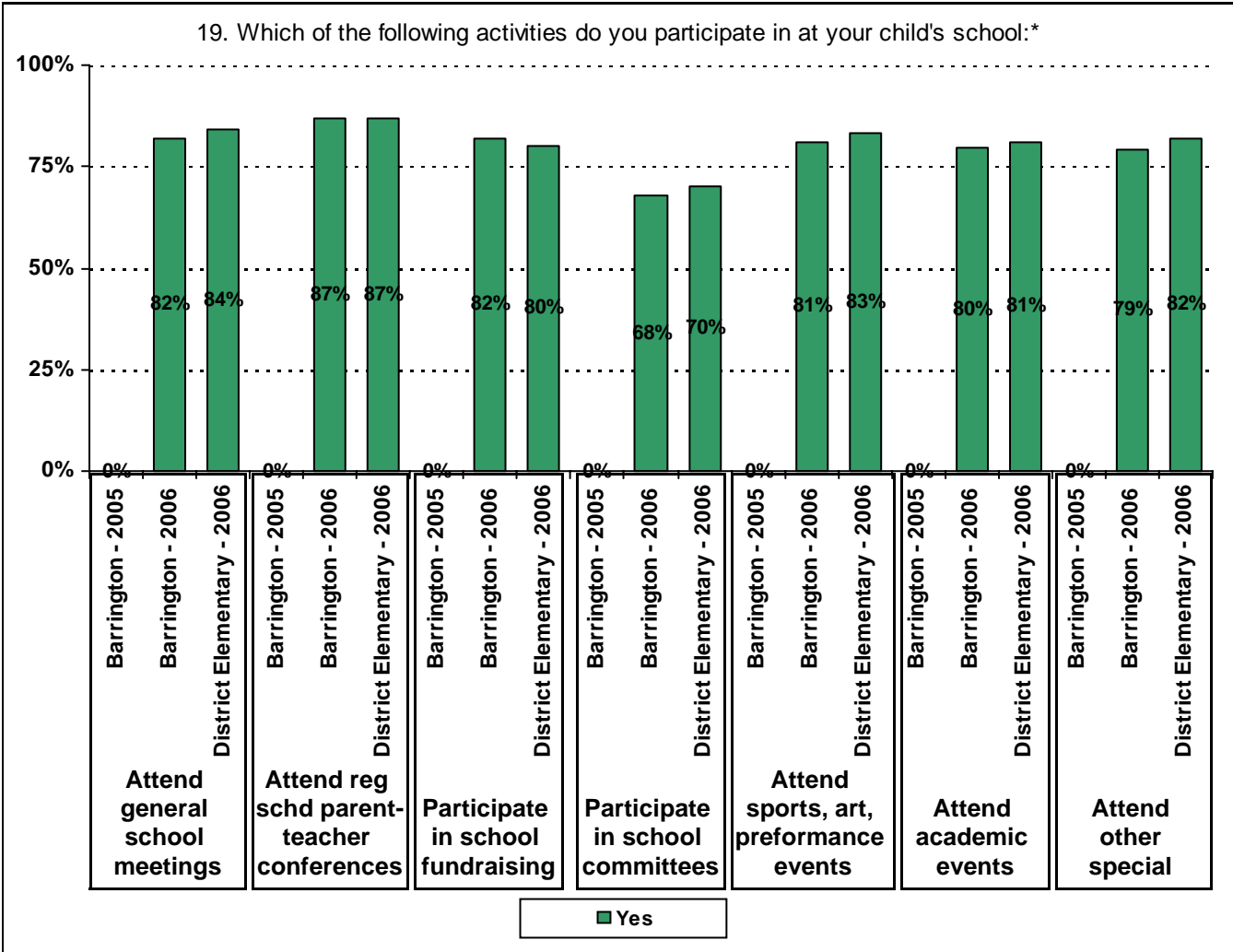
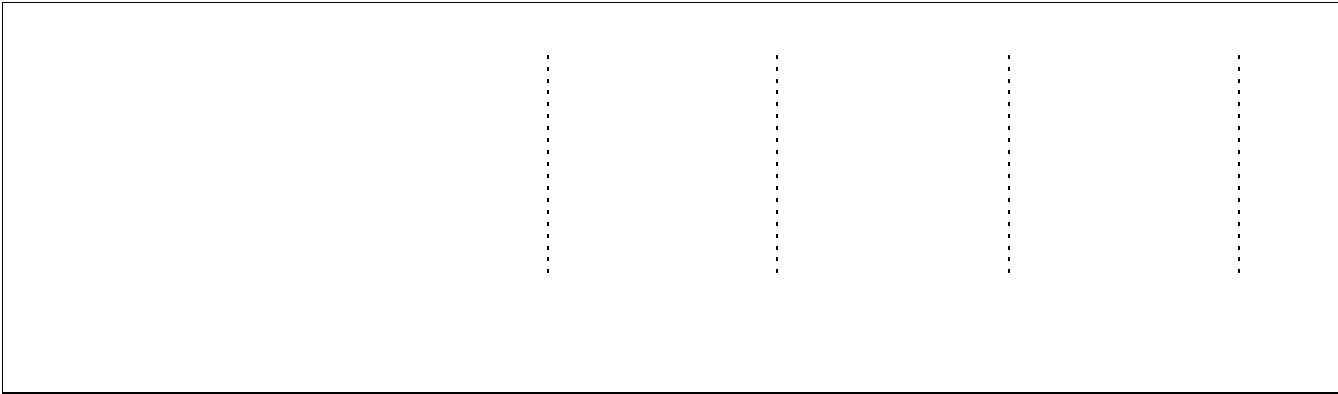
Strongly Disagree Score (hoo0*)-2 43(s03(t)-49





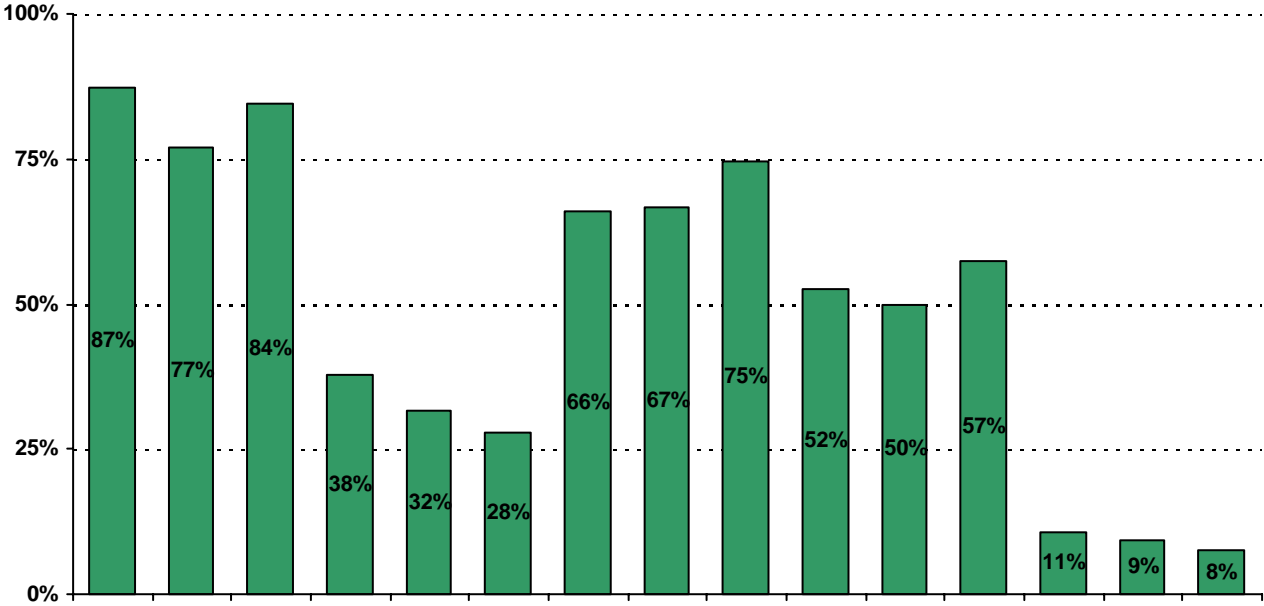
**Required
curriculum**





* Item(s) #17, #18, #19 added to the survey in 2006

20. My goals for my child include the following plans:



13a.	n = 218	104	86	11	6	11
13b.	n = 215					
13c.	n = 200					
14a.	n = 218	79	77	24	9	29
14b.	n = 218					
14c.	n = 221					
15a.	n = 226	124	77	17	6	2
15b.	n = 210	94	75	13	6	22
15c.	n = 218	92	74	19	10	23
15d.	n = 203	91	65	15	9	23
		117	68	10	5	9