



2006-2007 AISD Parent Survey Results

Baranoff Elementary School

The following report contains the results of the 2006-2007 AISD Parent Survey for your campus and all AISD schools at your level. The first section of this report provides a comparison of the campus demographics and the demographics reported by parents who responded to the survey from your campus. The next section describes the percentages of

How many parents responded to the survey in 2005-2006 and 2006-2007, and how does this compare to the number of students in the population each year?

	Campus	District EL	District MS	District HS
	224			
	822			
	27.3%			
	192			
	777			
	24.7%			

What did parents report as their child's ethnicity, and how does this compare to the ethnic distribution of the student population?

Ethnicity	% of Students, as Reported by Campus Parent Respondents	% of Students in Campus Population
	4.0%	
Asian	5.2%	5.8%
Hispanic	16.8%	21.1%
Native American	1.2%	0.6%
White	72.8%	69.2%

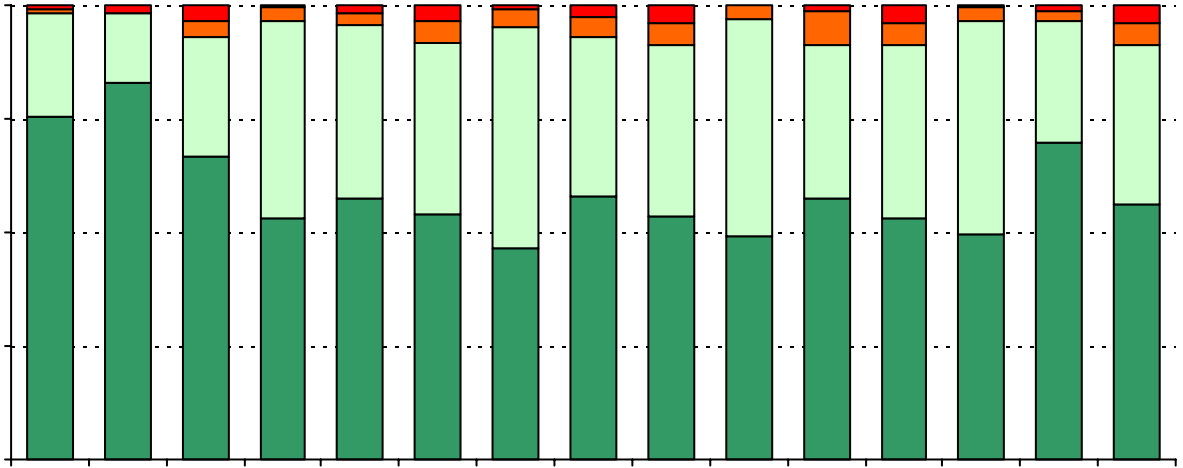
What did parents report as their child's grade, and how does this compare to the grade level distribution of the student population?

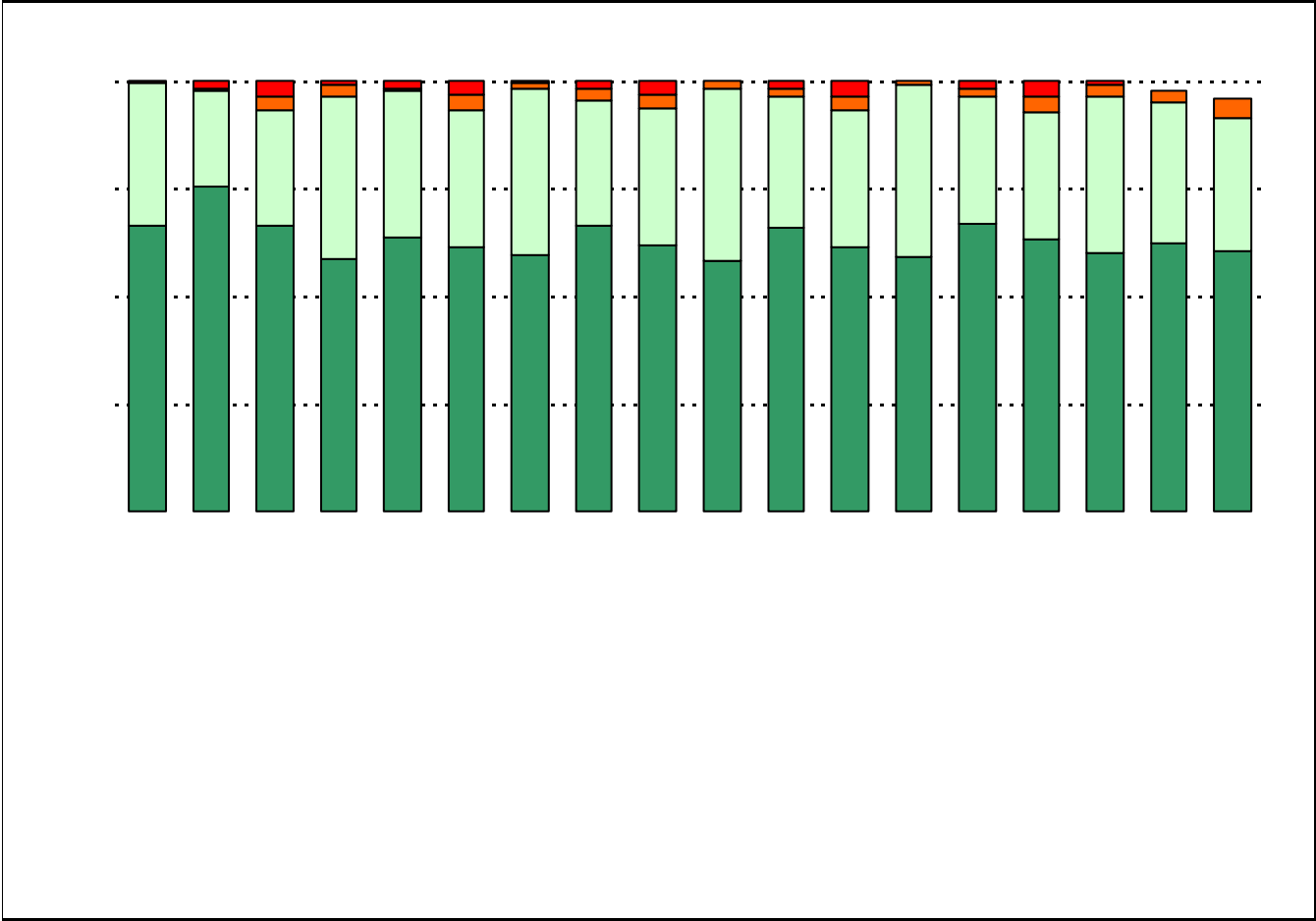
Grade	% of Students, as Reported by Campus Parent Respondents	% of Students in Campus Population
EC	N/A	N/A
PK	N/A	N/A
K	17.4%	15.1%
1st	14.7%	14.7%
2nd	13.7%	14.8%
3rd	17.9%	17.5%
4th	21.1%	19.2%
5th	15.3%	18.8%
6th	N/A	N/A

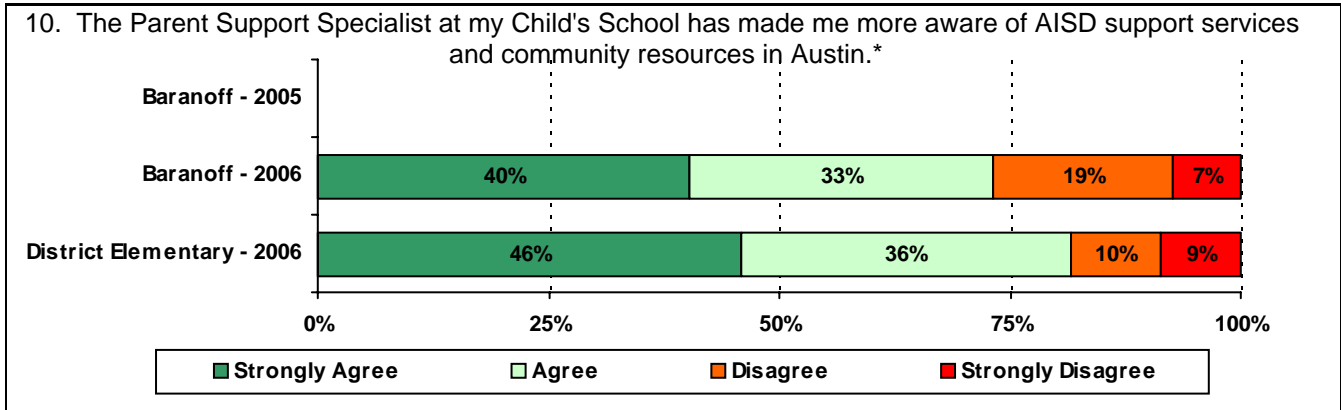
Note: Student population data are based on Fall PEIMS data submitted by the district to TEA, and may differ from the official AEIS report.

USING THE RESULTS OF THE AISD PARENT SURVEY

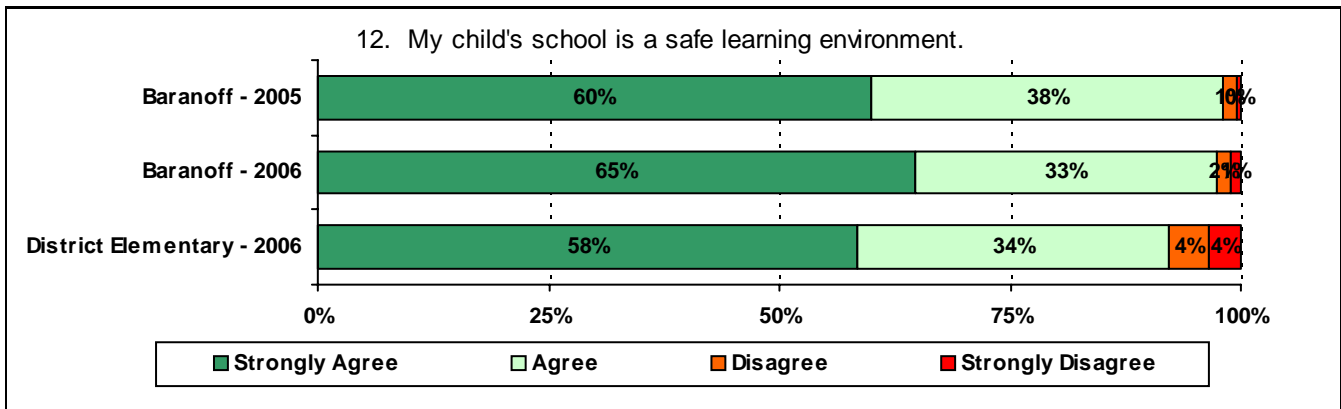
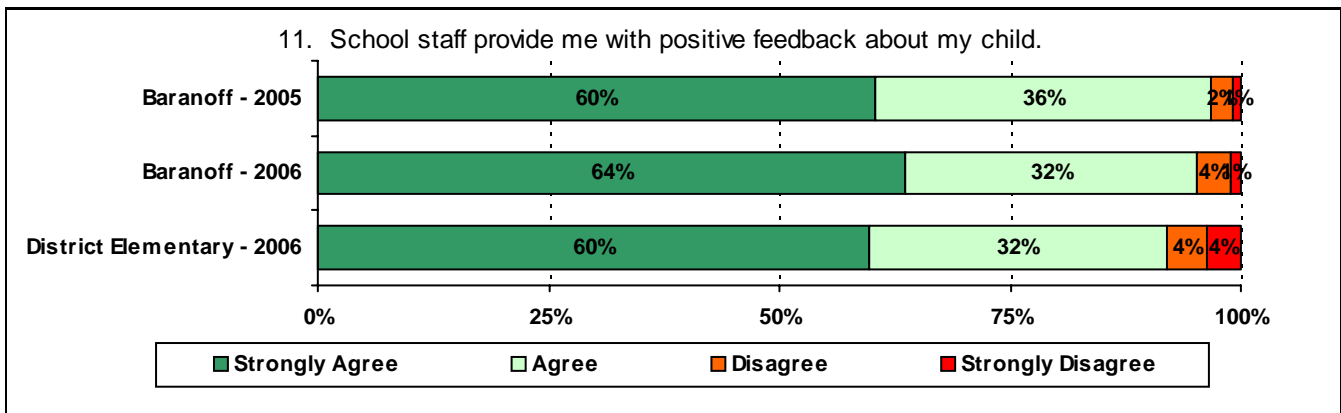
Each survey item is presented below, followed by a bar graph containing your school's results for two years and this year's results for all campuses at your level. You will be able to identify areas

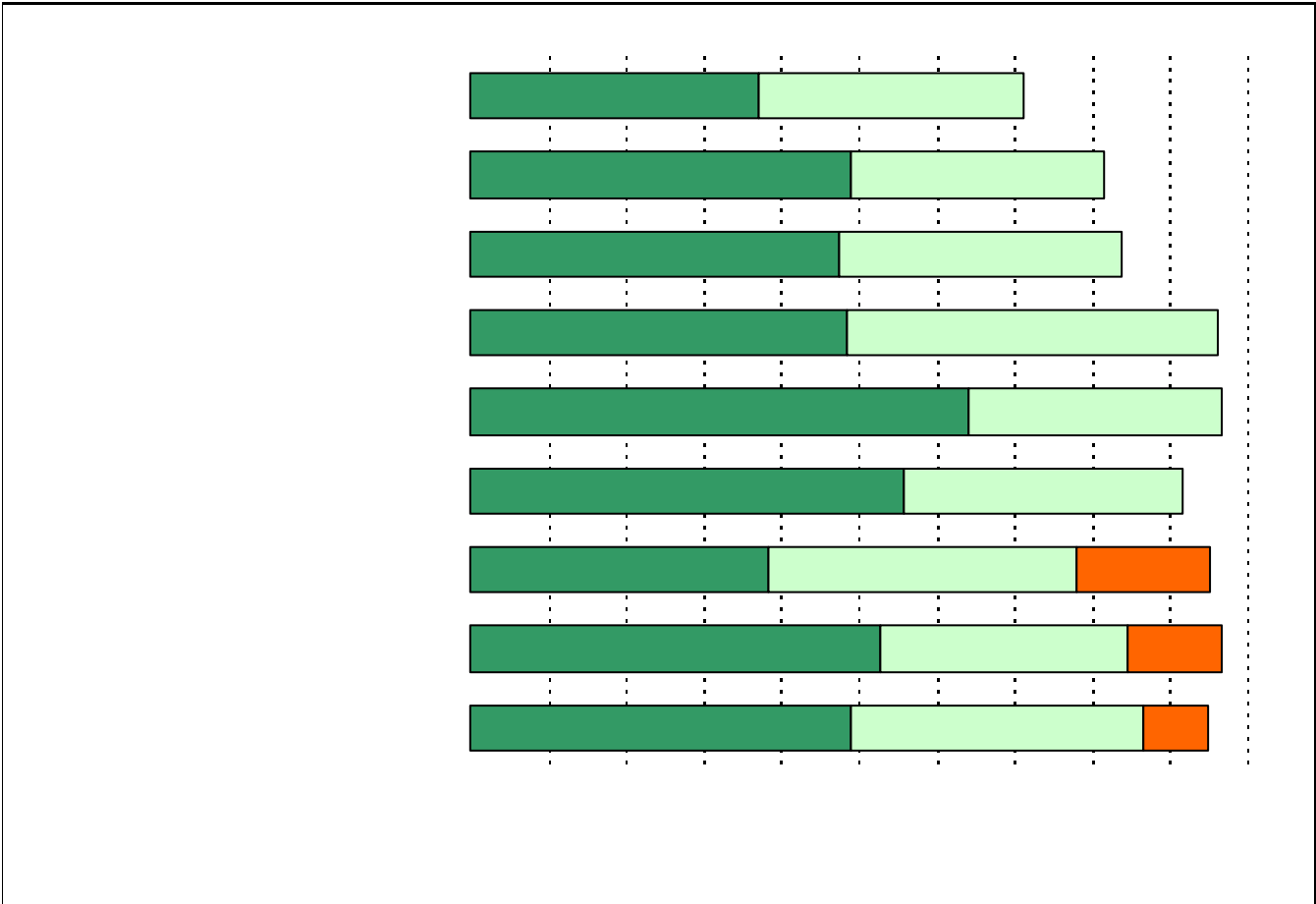




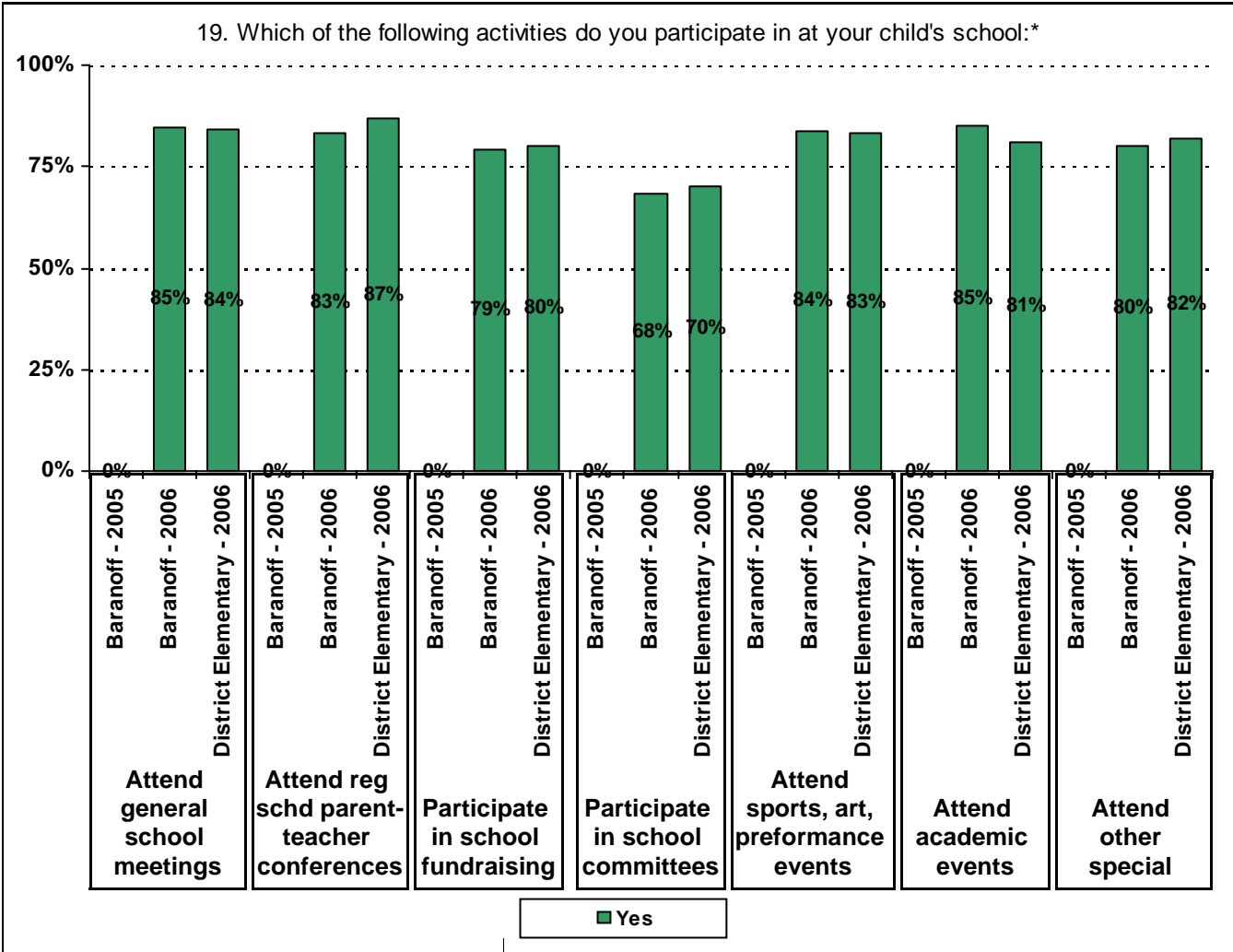
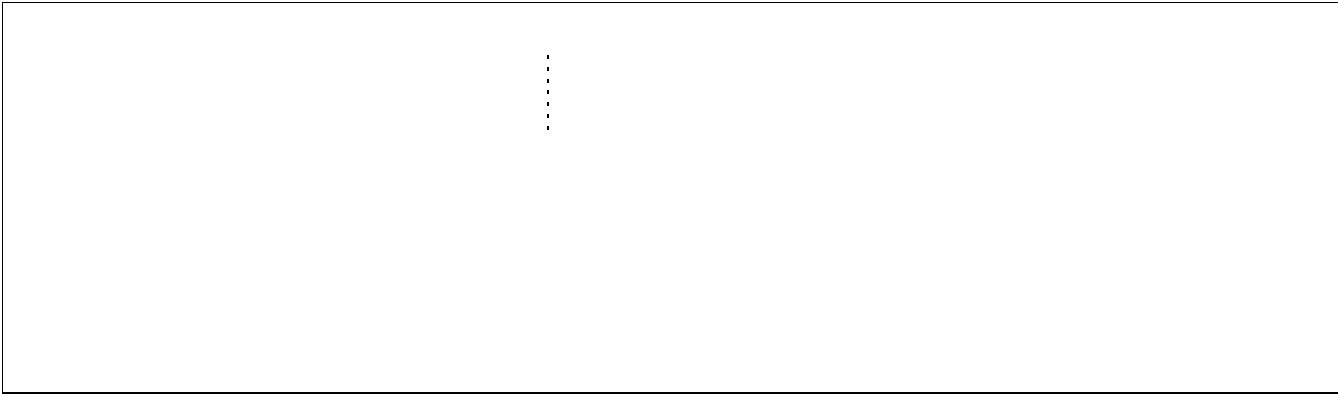


* Item #10 was added to the survey in 2006





**Required
curriculum**



* Item(s) #17, #18, #19 added to the survey in 2006



Item Response Details

Number-0.136599er-0.136599er-0.136599er-0.136599ere136599entary School0.132(Parent21.06 re TDee TD, 1146249 TD0.0030404 -0.1366 T60 Tc(2029 Tc90.75

	Strongly Agree	Agree	Disagree	Strongly Disagree	Don't Know/NA
--	----------------	-------	----------	-------------------	---------------

3a. n = 190	108	59	6	4	13
3b. n = 189	87	71	12	1	18
3c. n = 187	88	55	6	2	36
3d. n = 190	100	72	12	4	2
3e. n = 188	152	31	3	2	0

Number of Baranoff Elementary School Parent Responses, by Response Option
(Continued)

		Strongly Agree	Agree	Disagree	Strongly Disagree	Don't Know/NA
13a.	n = 187	137	45	0	4	1
13b.	n = 189	126	56	1	5	1
13c.	n = 188	116	58	5	5	4
14a.	n = 188	74	49	17	11	37
14b.	n = 189	120	61	1	5	2
14c.	n = 188	82	49	19	5	33
15a.	n = 188	125	56	3	4	0
15b.	n = 187	100	51	6	7	23
15c.	n = 188	93	53	8	6	28
15d.	n = 187	95	41	4	4	43
		124	56	2	5	0
20.	n = 192	Item 20 did not use the "Strongly Agree" to "Strongly Disagree" response options.				