



2005-2006 AISD Parent Survey Results

Baranoff Elementary School

The following report contains the results of the 2005-2006 AISD Parent Survey for your campus and all AISD schools at your level. The first section of this report provides a comparison of the campus demographics and the demographics reported by parents who responded to the survey from your campus. The next section describes the percentages of parents selecting specific responses for each survey item, and the final section indicates the actual number of parents who selected each response option. Campus survey results should be examined for areas of strength and opportunities for improvement. Results for all AISD schools at your level and results for your campus from 2004-2005 are presented to provide a reference for comparison.

How many parents responded to the survey in 2004-2005 and 2005-2006, and how does this compare to the number of students in the population each year?

	Campus	District EL	District MS	District HS
# of Parents Responding in 2004-2005	263	12,137	2,007	2,700
# of Students in 2004-2005	785	43,566	15,705	19,976
# of Parents Responding in 2005-2006	224	10,900	1,801	2,085
# of Students in 2005-2006	822	44,827	15,624	20,081

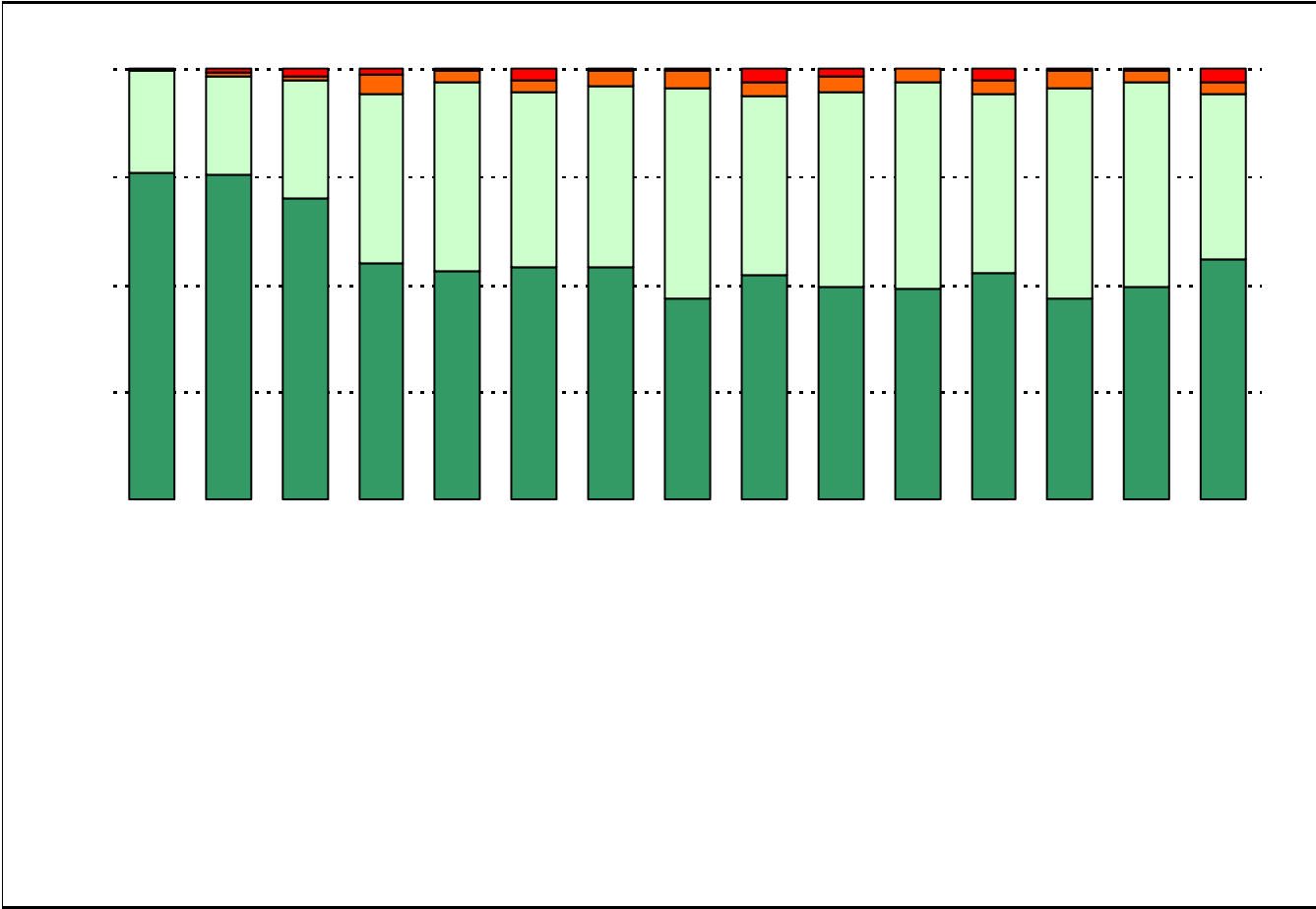
Note: The ratio of parent respondents to students is listed above as a percentage for ease of interpretation; however, it is the number of parents who responded per 100 students enrolled.

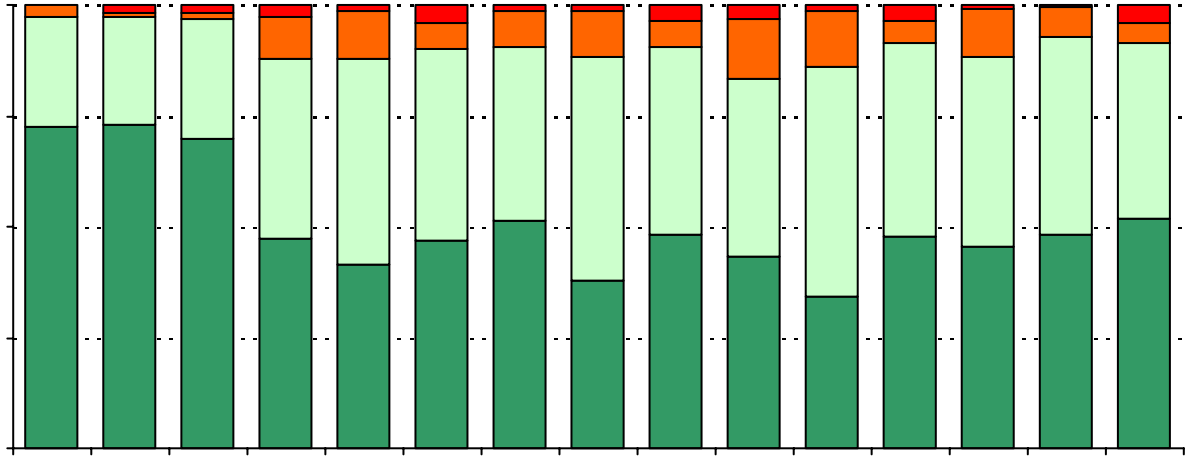
What did parents report as their child's ethnicity, and how does this compare to the ethnic distribution of the student population?

Ethnicity	% of Students, as Reported by Campus Parent Respondents	% of Students in Campus Population
African American	1.0%	2.8%
Asian	4.5%	5.1%
Hispanic	12.9%	19.2%
Native American	1.0%	0.5%
White	80.6%	72.4%

Grade	% of Students, as Reported by Campus Parent Respondents	% of Students in Campus Population
EC		
PK		
K		

USING THE RESULTS OF THE AISD PARENT SURVEY

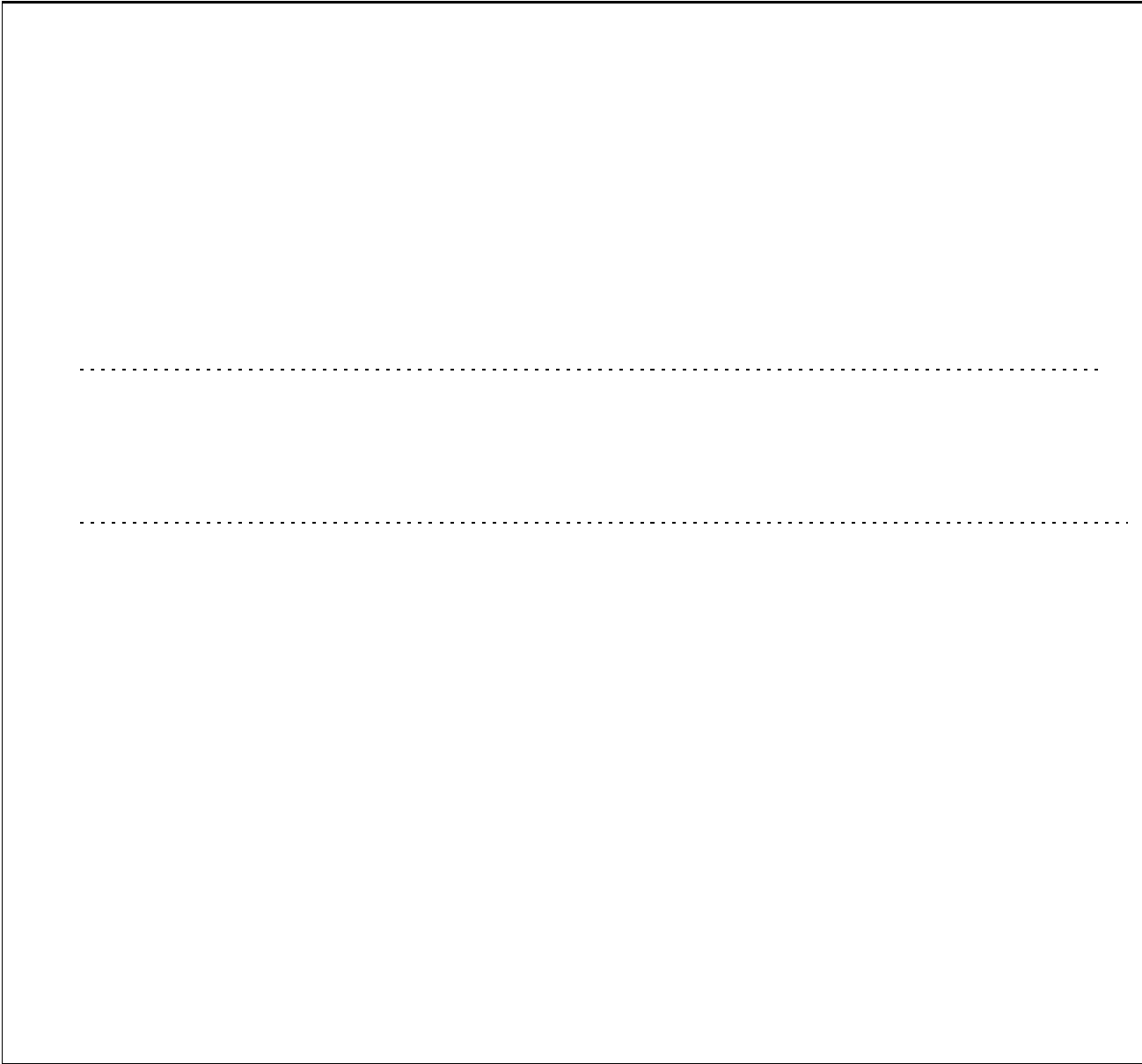




.....



Required



Item Response Details

Number of Baranoff Elementary School Parent Responses, by Response Option

		Strongly Agree	Agree	Disagree	Strongly Disagree	Don't Know/NA
4a.	n = 216	100	82	3	1	30
4b.	n = 214	94	84	10	1	25
4c.	n = 213	85	66	6	1	55
4d.	n = 217	116	81	13	2	5
<hr/>						
5a.	n = 215	88	84	5	1	37
5b.	n = 214	79	77	5	0	53
5c.	n = 216	70	73	6	1	66
5d.	n = 216	95	78	5	1	37
5e.	n = 216	163	49	2	2	0
6a.	n = 214	82	76	11	1	44
6b.	n = 211	49	74	18	2	68
6c.	n = 211	49	66	13	2	81
6d.	n = 215	57	64	15	2	77
6e.	n = 217	158	52	2	4	1
7a.	n = 213	81	59	9	5	59
7b.	n = 211	55	59	12	7	78
7c.	n = 212	49	60	10	6	87
7d.	n = 211	47	61	11	3	89
7e.	n = 217	144	64	3	4	2
8a.	n = 216	106	71	2	0	37
8b.	n = 215	100	69	3	0	43
8c.	n = 213	96	62	2	1	52
8d.	n = 215	110	71	5	2	27
8e.	n = 218	141	70	0	1	6
		130	83	3	1	1

