



2006-2007 AISD Parent Survey Results

Anderson High School

How many parents responded to the survey in 2005-2006 and 2006-2007, and how does this compare to the number of students in the population each year?

	Campus	District EL	District MS	District HS
	163			
	2,088			
	7.8%			
	67			
	2,023			
	3.3%			

What did parents report as their child's ethnicity, and how does this compare to the ethnic distribution of the student population?

Ethnicity	% of Students, as Reported by Campus Parent Respondents	% of Students in Campus Population
	1.6%	
	4.8%	
	1.6%	
Native American	1.6%	0.2%
White	90.5%	63.6%

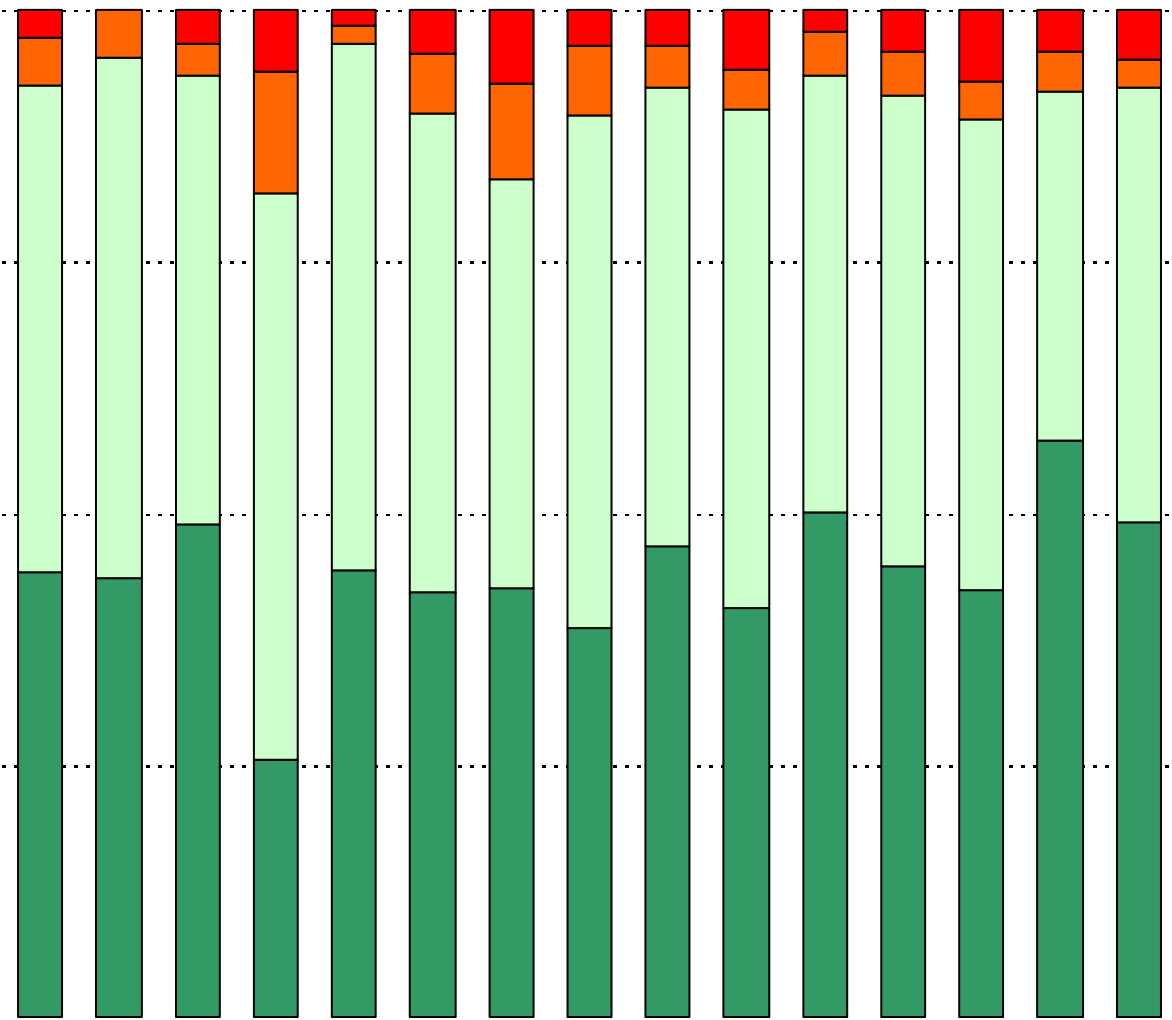
What did parents report as their child's grade, and how does this compare to the grade level distribution of the student population?

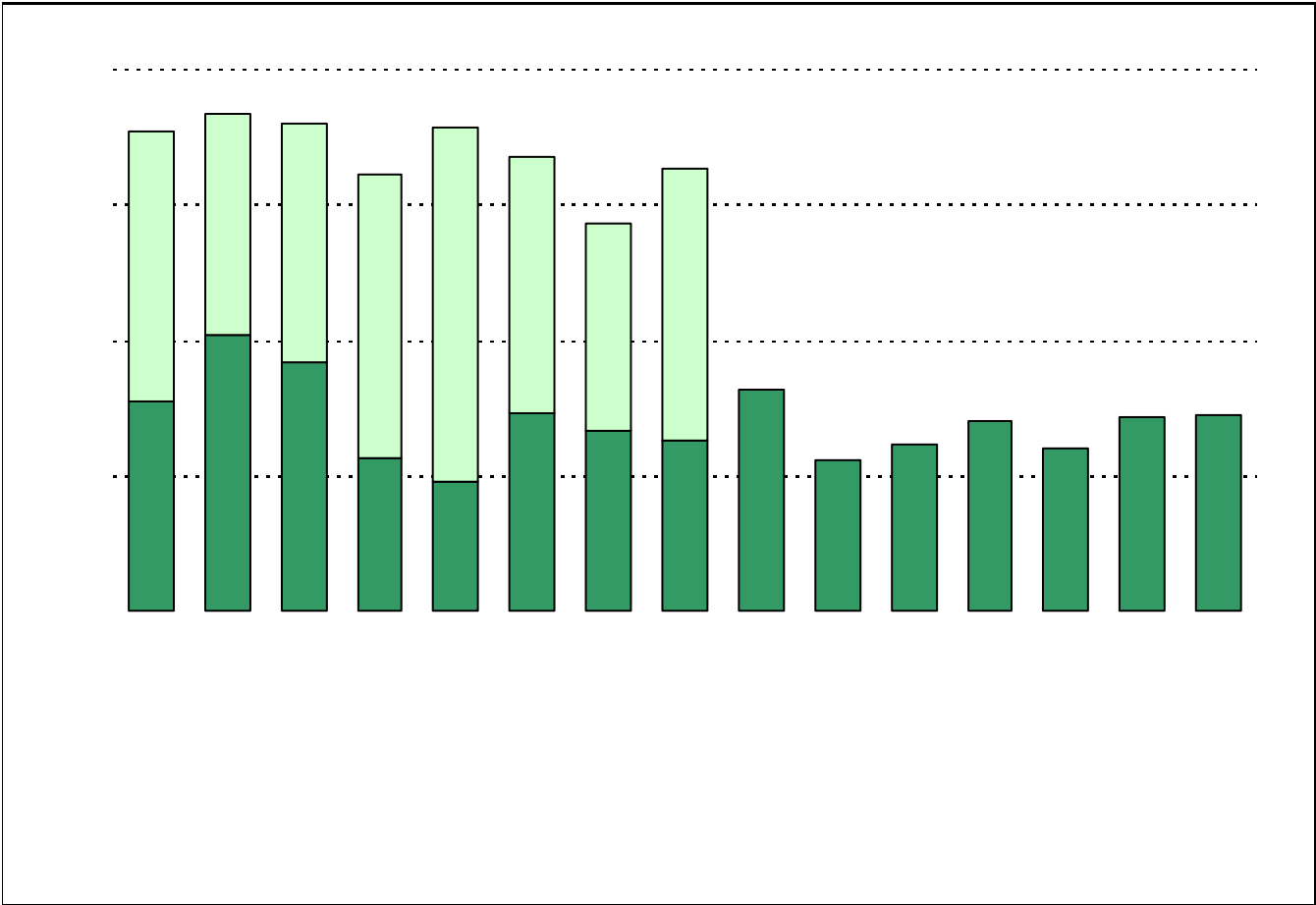
Grade	% of Students, as Reported by Campus Parent Respondents	% of Students in Campus Population
6th	N/A	N/A
7th	N/A	N/A
8th	N/A	N/A
9th	30.3%	28.0%
10th	28.8%	24.0%
11th	27.3%	25.0%
12th	13.6%	23.0%

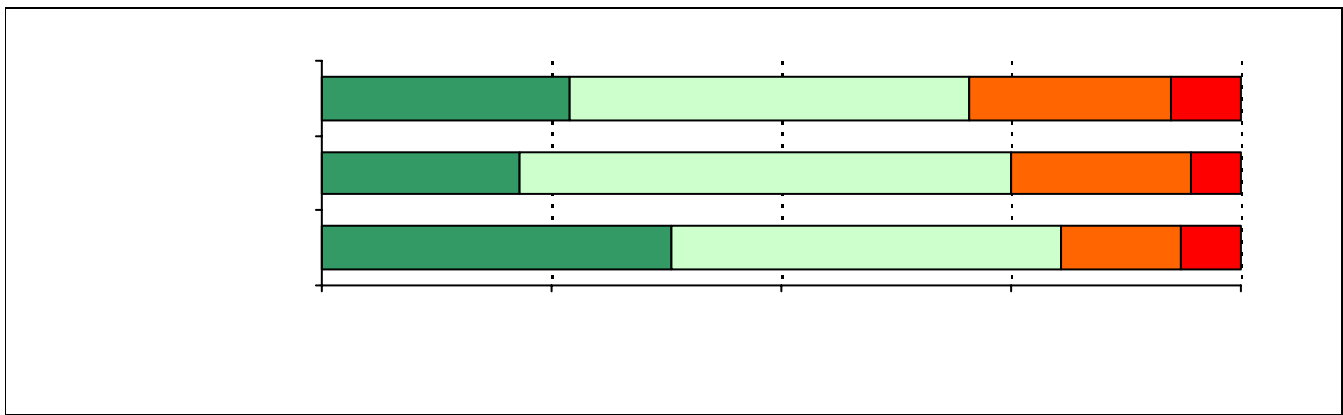
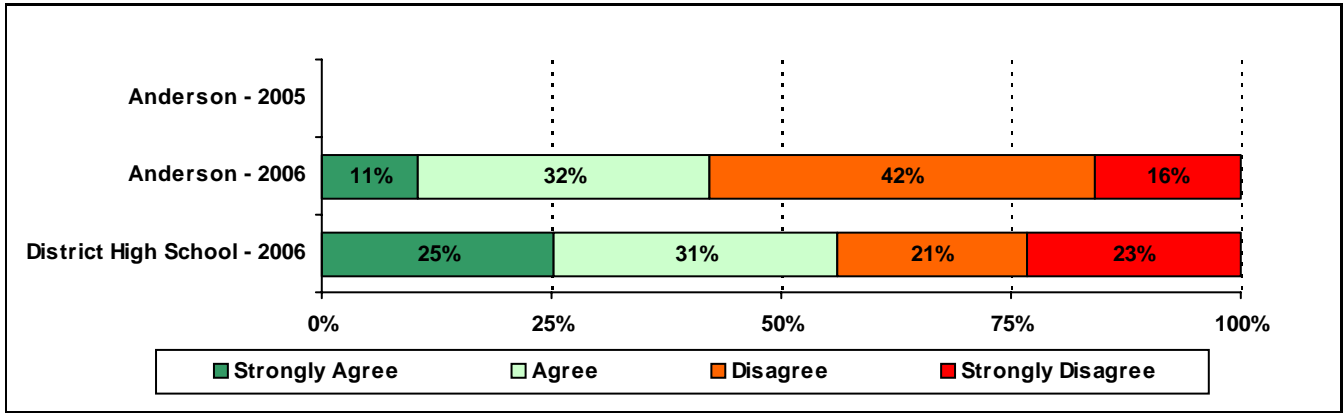
Note: Student population data are based on Fall PEIMS data submitted by the district to TEA, and may differ from the official AEIS report.

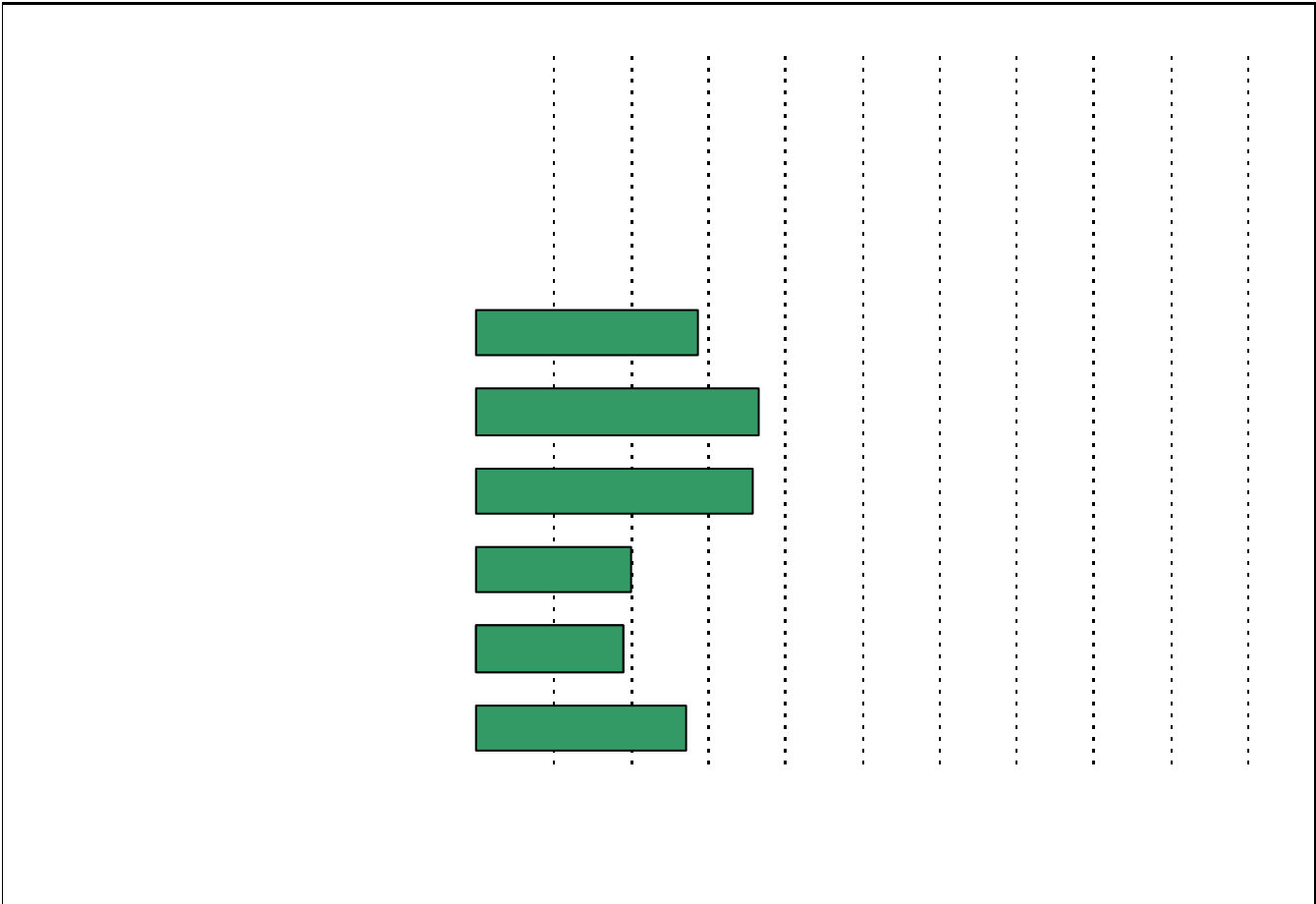
USING THE RESULTS OF THE AISD PARENT SURVEY

Each survey item is presented below, followed by a bar graph containing your school's results for

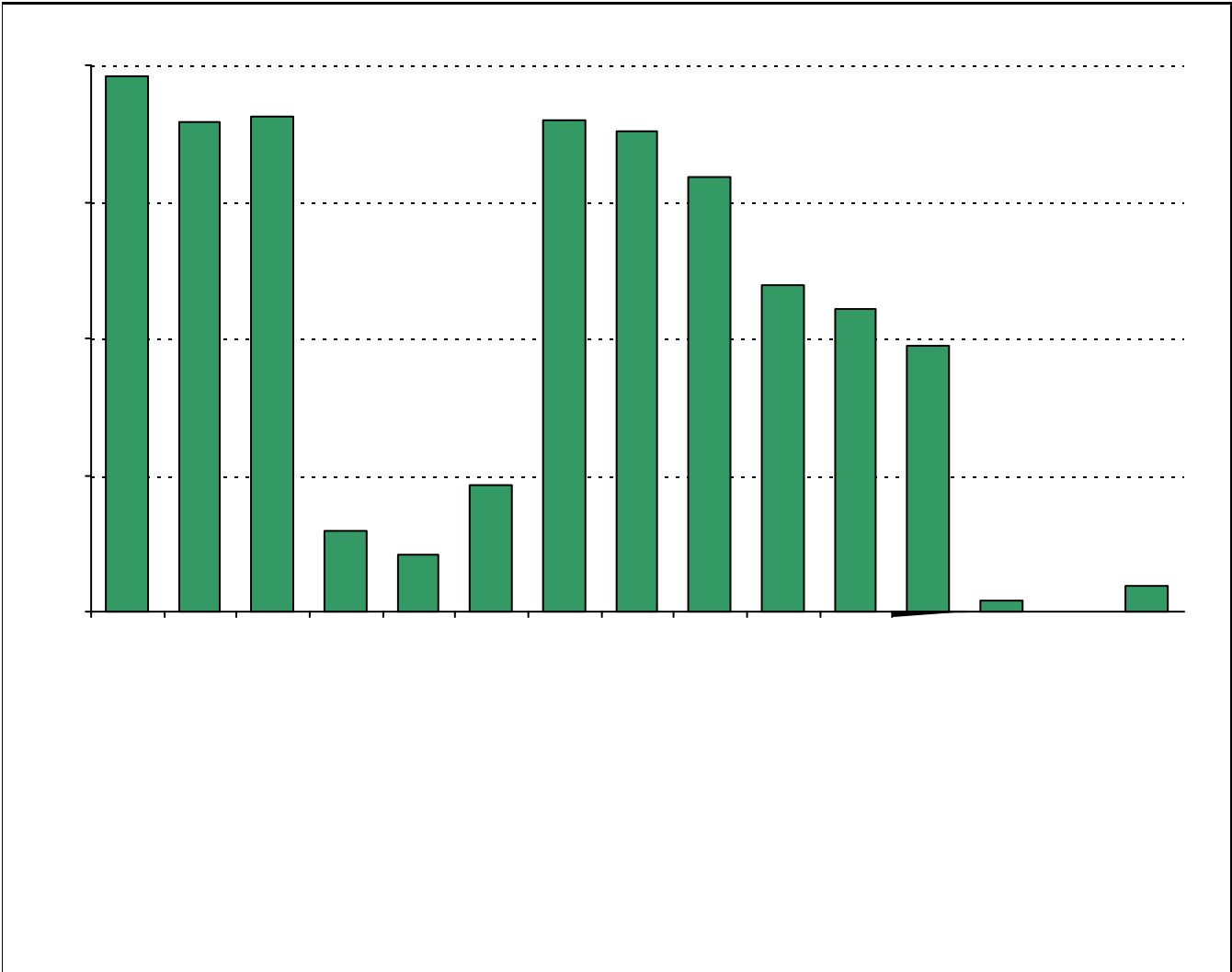








Required



Item Response Details

Number of Anderson High School Parent Responses, by Response Option

		Strongly Agree	Agree	Disagree	Strongly Disagree	Don't Know/NA
3a.	n = 64	28	17	2	2	15
3b.	n = 63	23	20	2	1	17
3c.	n = 63	22	29	4	2	6
3d.	n = 64	27	32	1	1	3
3e.	n = 64	27	32	3	0	2
6a.	n = 63	15	20	4	3	21
6b.	n = 63	12	22	4	1	24
6c.	n = 64	17	27	6	4	10
6d.	n = 64	11	30	4	1	18
6e.	n = 63	30	24	5	0	4
7a.	n = 59	7	23	6	2	21
7b.	n = 60	11	17	6	1	25
7c.	n = 59	13	29	6	3	8
7d.	n = 59	3	24	7	1	24
7e.	n = 60	16	34	5	1	4
8a.	n = 60	9	12	6	2	31
8b.	n = 60	13	12	5	2	28
8c.	n = 62	18	19	7	5	13
8d.	n = 60	4	18	2	1	35
8e.	n = 62	20	25	7	2	8
		17	23	1	2	19

13a.	n = 61	16	42	1	1	1
13b.	n = 61					
13c.	n = 61					
14a.	n = 60	13	35	7	2	3
14b.	n = 61					
14c.	n = 60					
15a.	n = 61	17	28	12	2	2
15b.	n = 61	7	21	22	5	6