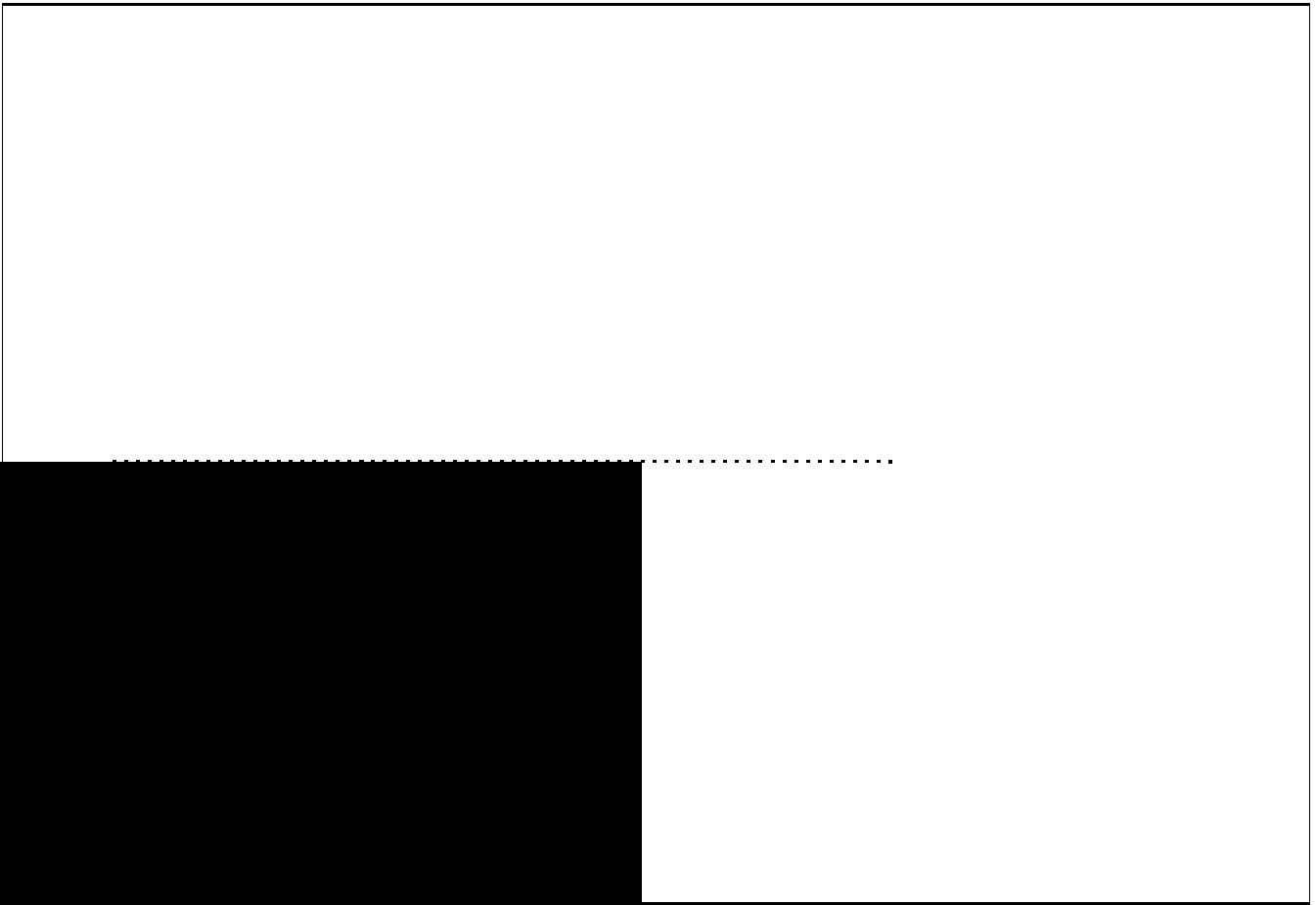


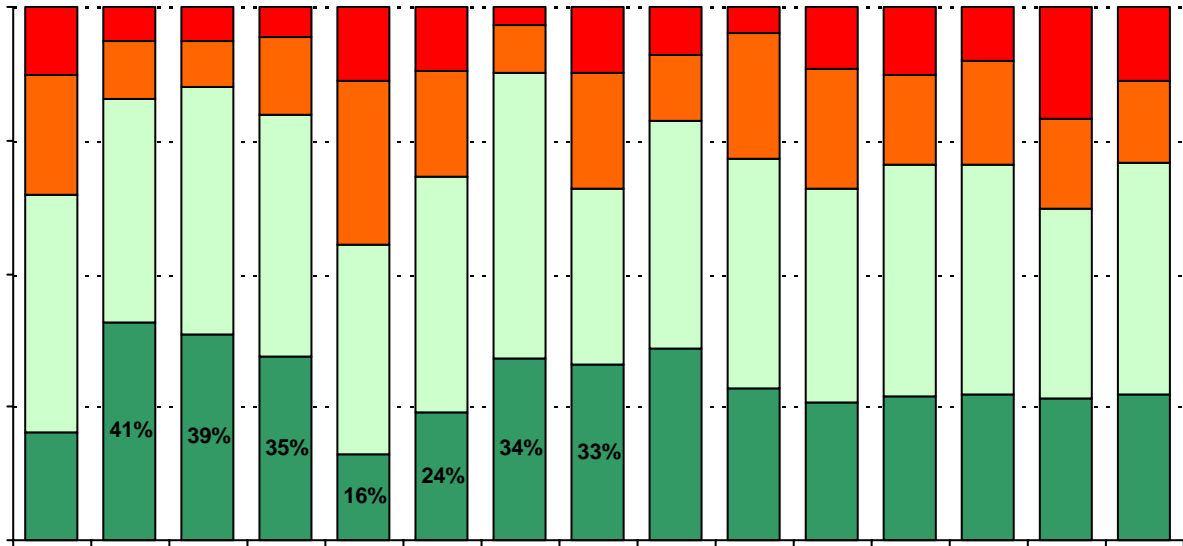
**How many parents responded to the survey in 2004-2005 and 2005-2006, and how does this compare to the number of students in the population each year?**

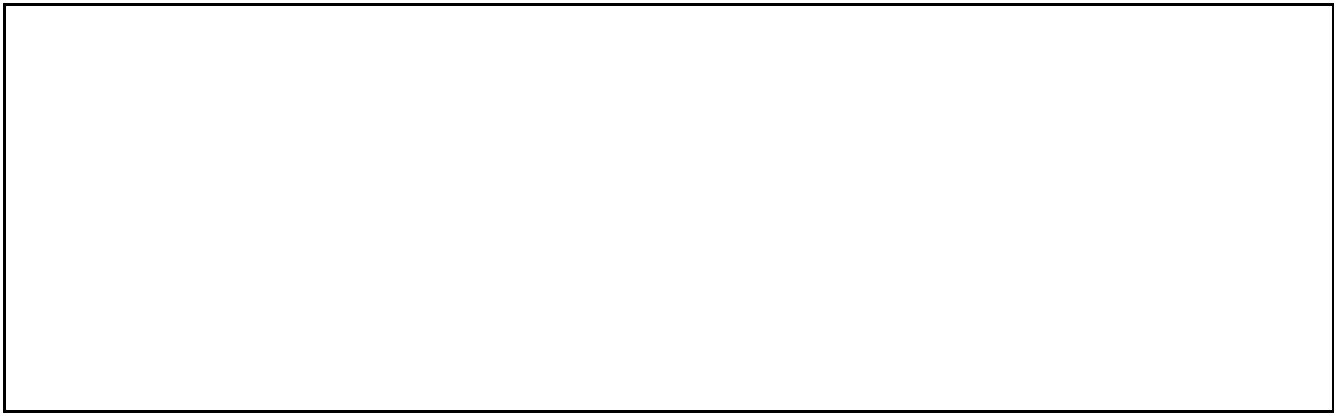
	Campus	District EL	District MS	District HS
	143			
	1,989			
	<i>7.2%</i>			
	163			
	2,088			
	<i>7.8%</i>			

Note: The ratio of parent respondents to students is listed above as a percentage for ease of interpretation; however, it is the number of parents who responded per 100 students enrolled.

**USING THE RESULTS OF THE AISD PARENT S**









.....  
|

\* The "Parent/Family Involvement Opportunities" and "Parent/Family Resources" categories were added to the survey in 2005.

**Required**







## Item Response Details

Number of Anderson High School Parent Responses, by Response Option

		Strongly Agree	Agree	Disagree	Strongly Disagree	Don't Know/NA
<b>3a.</b>	<b>n = 155</b>	47	52	4	8	44
<b>3b.</b>	<b>n = 155</b>	41	50	4	6	54
<b>3c.</b>	<b>n = 157</b>	58	55	13	10	21
<b>3d.</b>	<b>n = 157</b>	38	84	18	9	8
<b>3e.</b>	<b>n = 155</b>	64	70	7	4	10
<b>5a.</b>	<b>n = 152</b>	31	51	9	12	49
<b>5b.</b>	<b>n = 152</b>	27	51	10	9	55
<b>5c.</b>	<b>n = 153</b>	43	50	24	13	23
<b>5d.</b>	<b>n = 154</b>	33	61	14	9	37
<b>5e.</b>	<b>n = 155</b>	57	74	10	7	7
<b>6a.</b>	<b>n = 149</b>	24	32	15	19	59
<b>6b.</b>	<b>n = 150</b>	22	34	19	10	65
<b>6c.</b>	<b>n = 150</b>	38	38	25	14	35
<b>6d.</b>	<b>n = 151</b>	15	37	29	13	57
<b>6e.</b>	<b>n = 151</b>	52	53	14	8	24
<b>7a.</b>	<b>n = 148</b>	19	40	9	11	69
		69				

Number of Anderson High School Parent Responses, by Response Option  
(Continued)

		Strongly Agree	Agree	Disagree	Strongly Disagree	Don't Know/NA
11a.	n = 156	47	87	12	4	6
11b.	n = 155	52	90	7	3	3
11c.	n = 155	49	93	5	5	3
11d.	n = 153	52	83	10	4	4
11e.	n = 155	50	81	13	10	1
11f.	n = 154	52	90	7	4	1
11g.	n = 153	43	65	29	7	9
11h.	n = 153	35	65	30	14	9
11i.	n = 152	40	82	17	7	6
12a.	n = 155	23	25	18	8	81
12b.	n = 155	15	23	14	10	93
12c.	n = 153	25	42	26	13	47
12d.	n = 155	42	63	21	4	21
12e.	n = 150	40	77	15	7	11
12f.	n = 152	21	45	25	14	47
13a.	n = 155	61	70	19	5	0
13b.	n = 153	33	36	44	19	21
13c.	n = 155	32	46	47	15	15
13d.	n = 152	43	62	12	6	29
13e.	n = 153	45	62	23	7	16
14a.	n = 154	44	56	20	11	23
14b.	n = 153	30	29	41	16	37
14c.	n = 154	29	31	24	17	53
14d.	n = 153	32	32	24	12	53
14e.	n = 151	25	23	35	14	54
15.	n = 157	<p><i>Item 14 did not use the "Strongly Agree" to "Strongly Disagree" scale. Numbers below reflect the number of parents selecting each goal. These numbers will not sum to the total number of item respondents because parents may select multiple goals.</i></p>				
		<b>High School diploma</b>	<b>Certificate/ Associates degree</b>	<b>Bachelors degree</b>	<b>Graduate/ Professional degree</b>	<b>Military service</b>
		154	23	141	94	3