



2006-2007 AISD Parent Survey Results

Allan Elementary School

The following report contains the results of the 2006-2007 AISD Parent Survey for your campus and all AISD schools at your level. The first section of this report provides a comparison of the campus demographics and the demographics reported by parents who responded to the survey from your campus. The next section describes the percentages of parents selecting specific responses for each survey item, and the final section indicates the actual number of parents who selected each response option. Campus survey results should be examined for areas of strength and opportunities for improvement. Results for all AISD schools

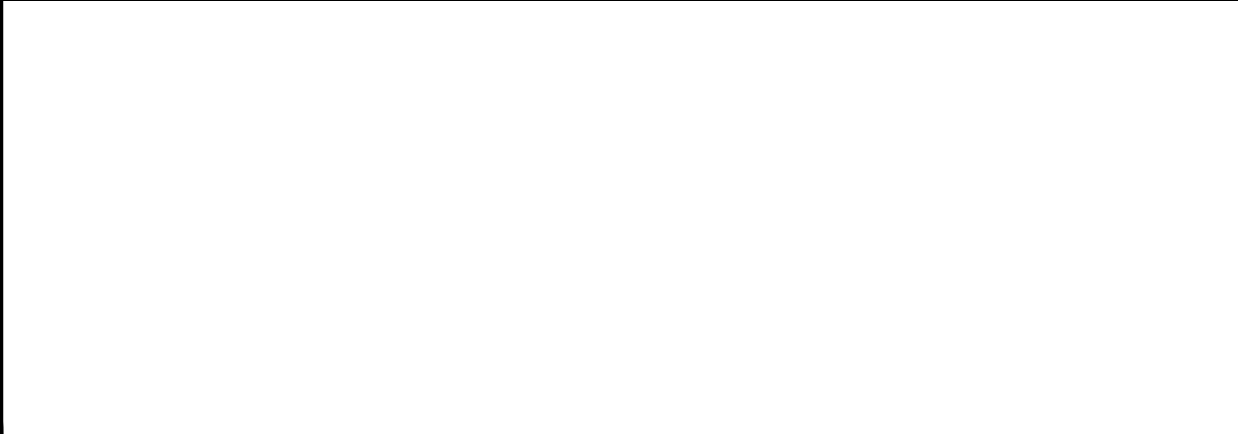
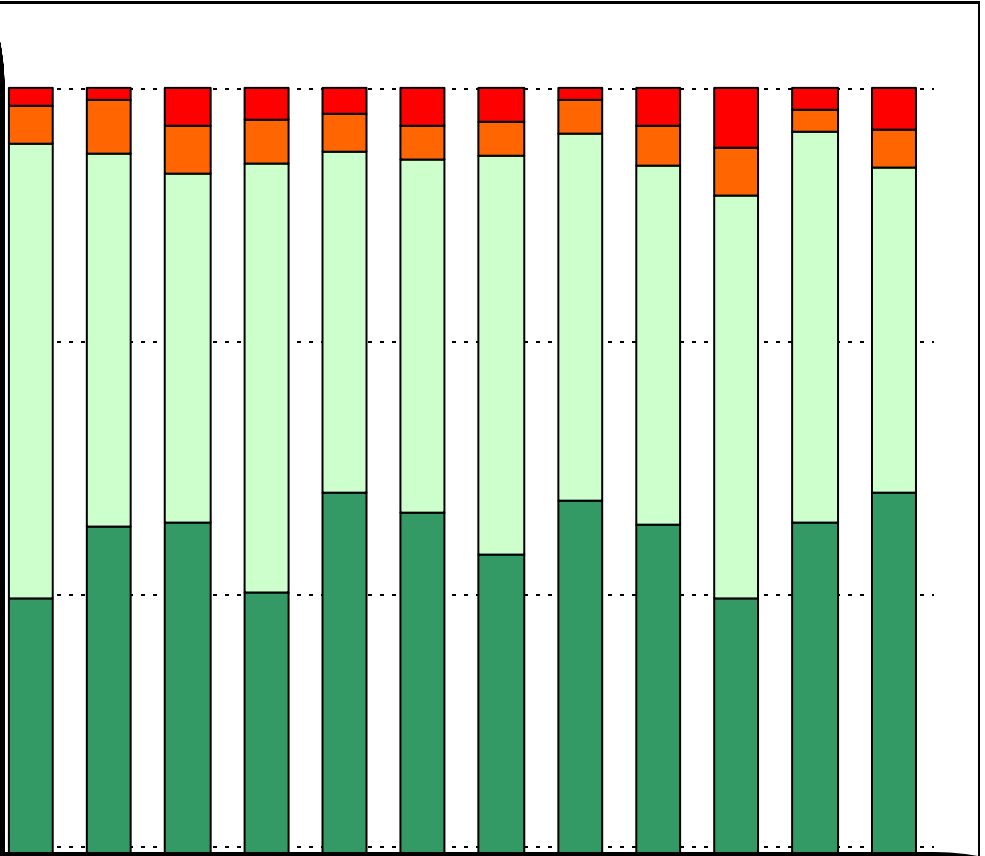
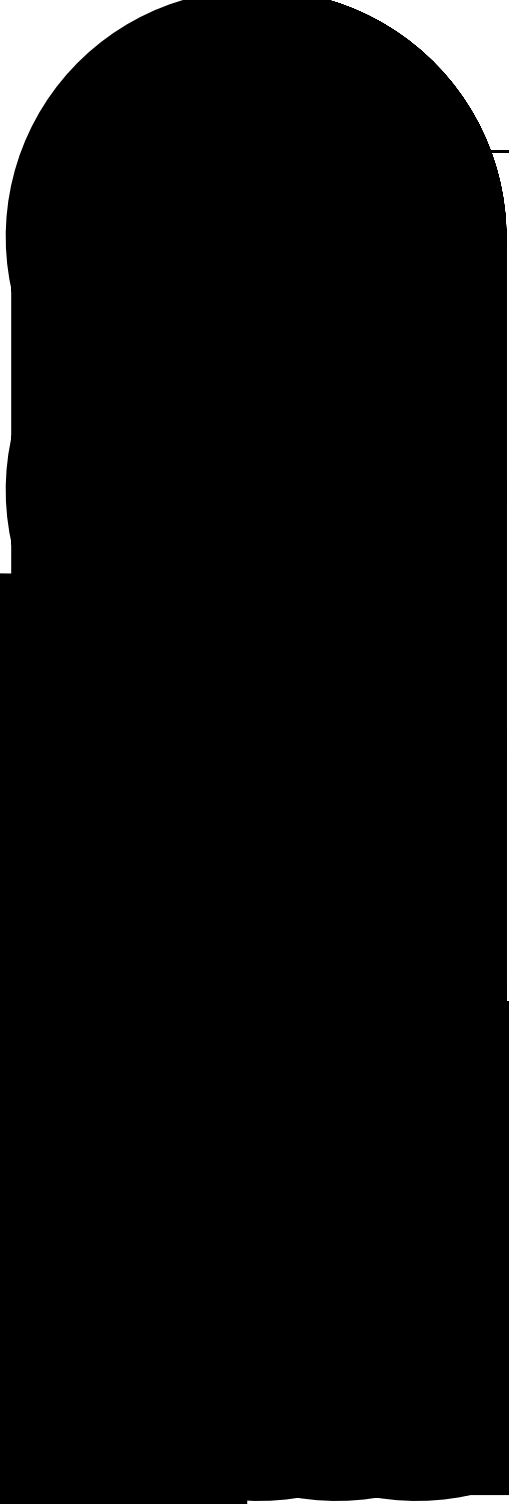
How many parents responded to the survey in 2005-2006 and 2006-2007, and how does this compare to the number of students in the population each year?

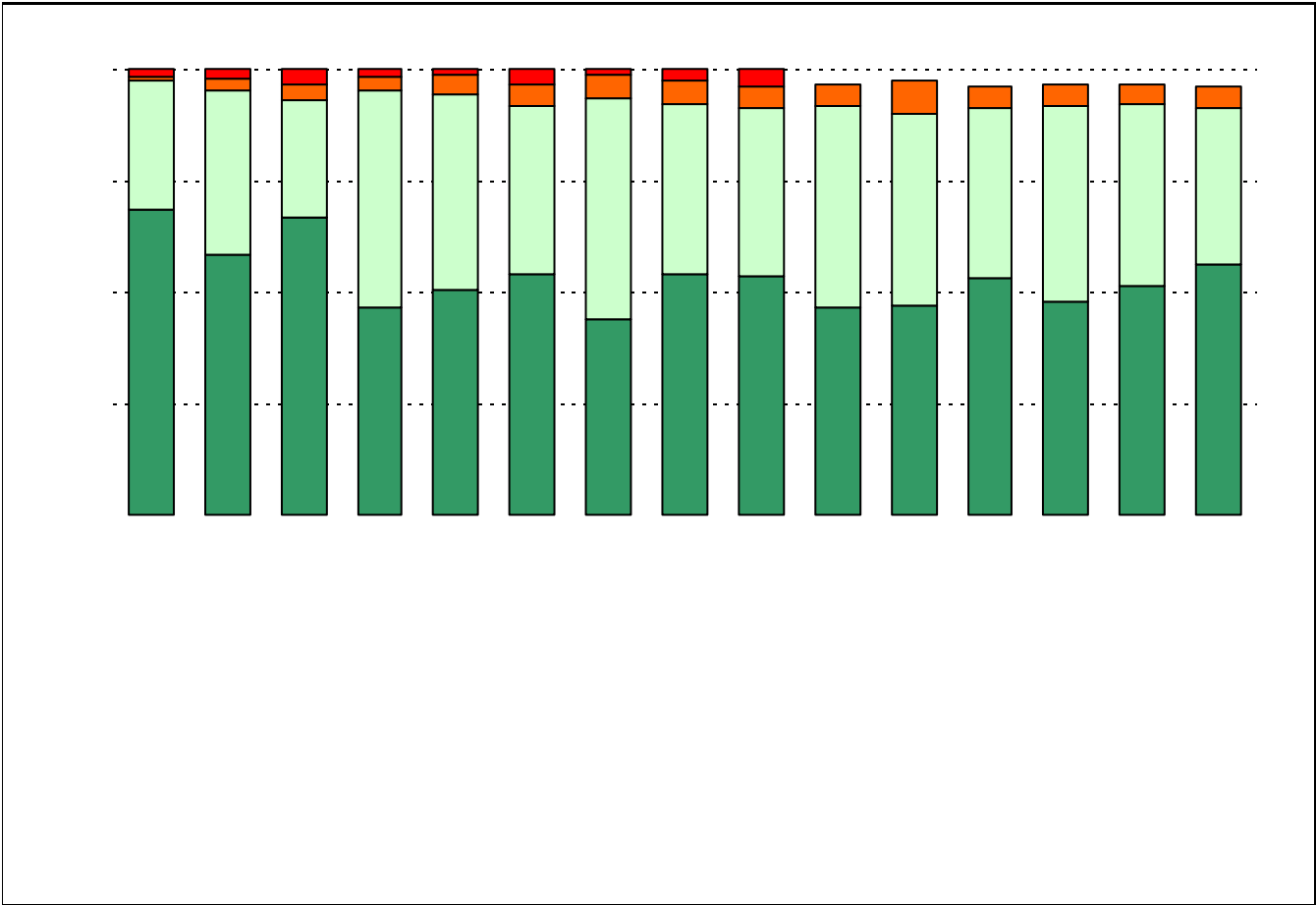
	Campus	District EL	District MS	District HS
	125			
	408			
	30.6%			
	108			
	432			
	25%			

What did parents report as their child's ethnicity, and how does this compare to the ethnic distribution of the student population?

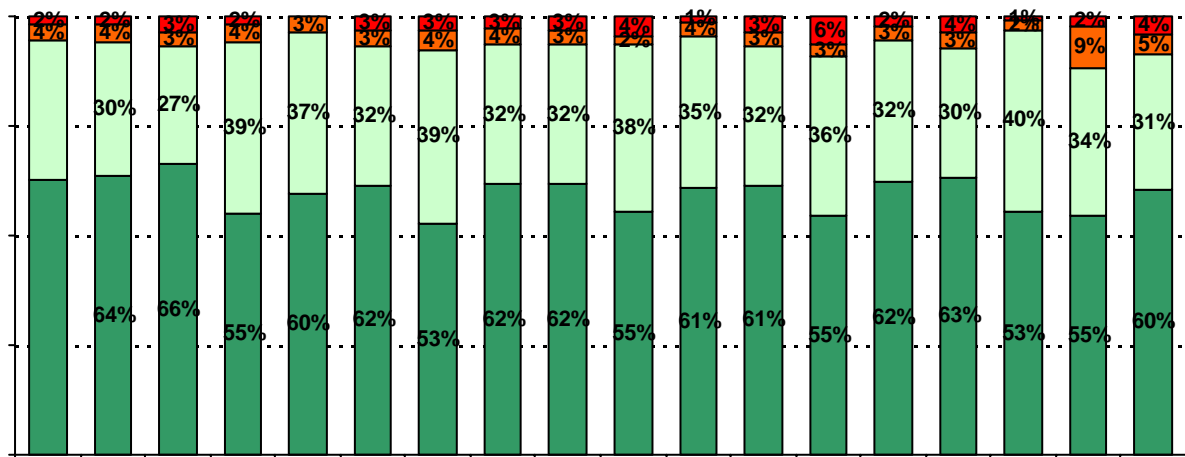
Ethnicity	% of Students, as Reported by Campus Parent Respondents	% of Students in Campus Population
Asian	8.1%	0.2%
Hispanic	86.0%	87.3%
Native American	3.5%	0.0%
White	2.3%	1.4%

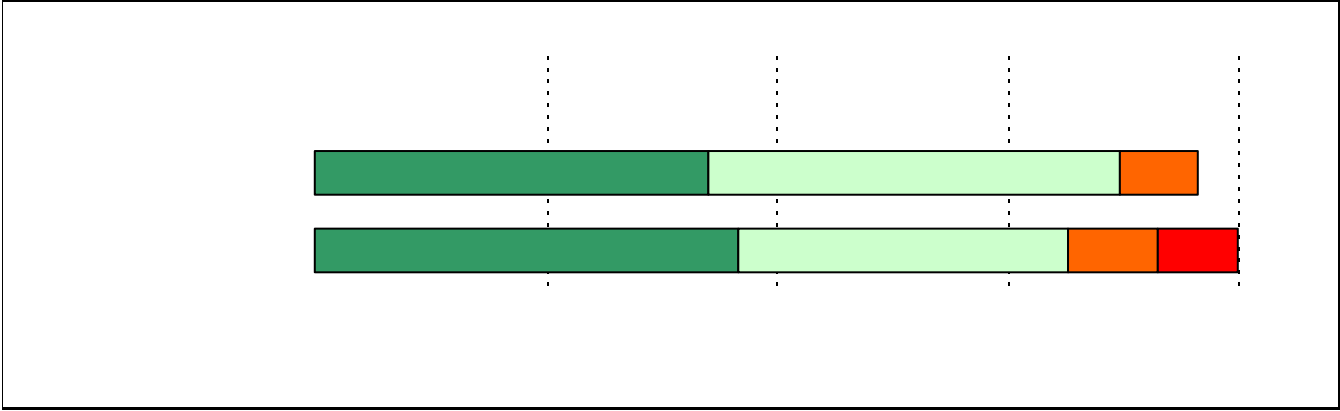
USING THE RESULTS OF THE AISD PAN 0 59g THE





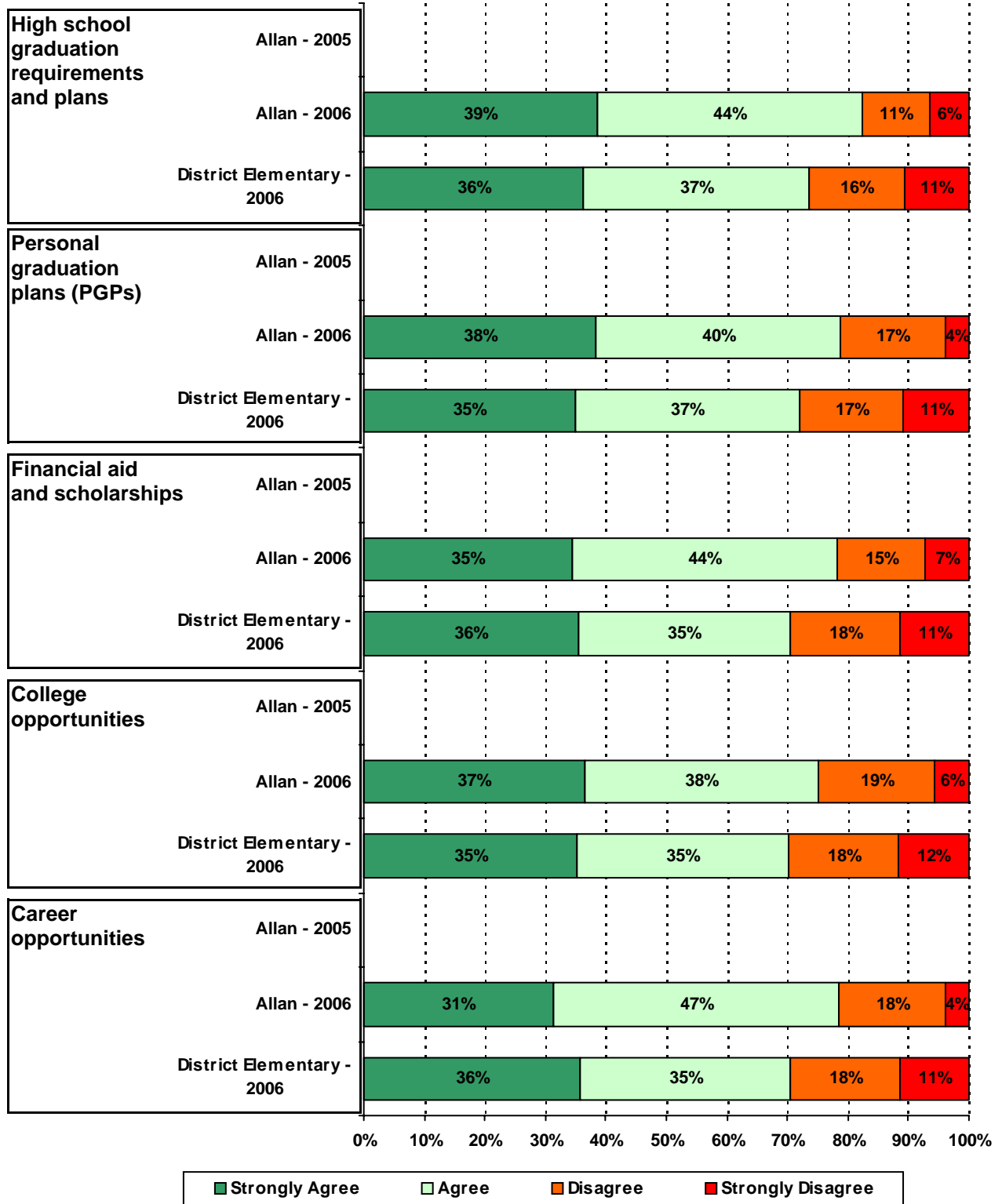
4%



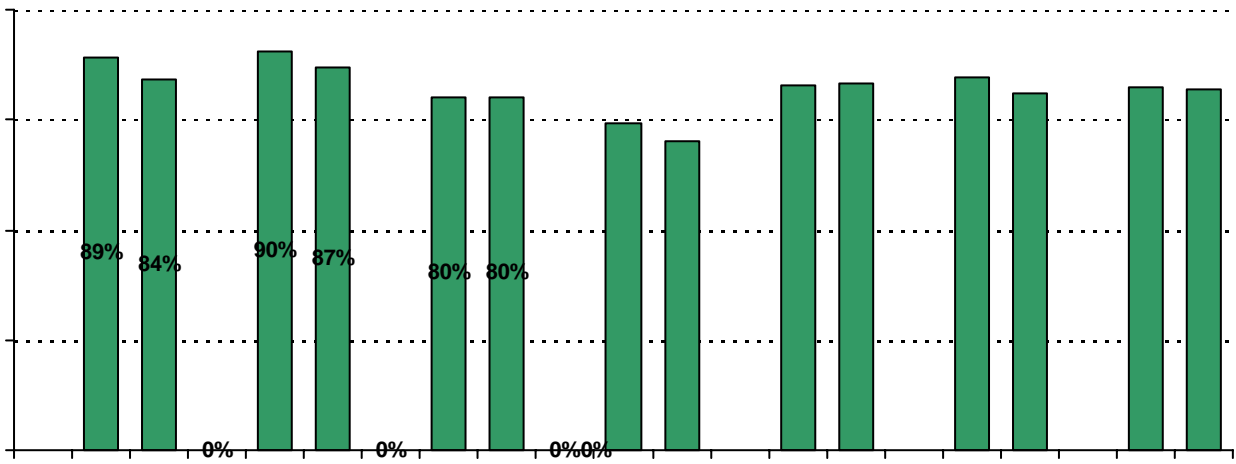


**Required
curriculum**

16. School staff provide me with useful information about the following graduation and post-graduation topic

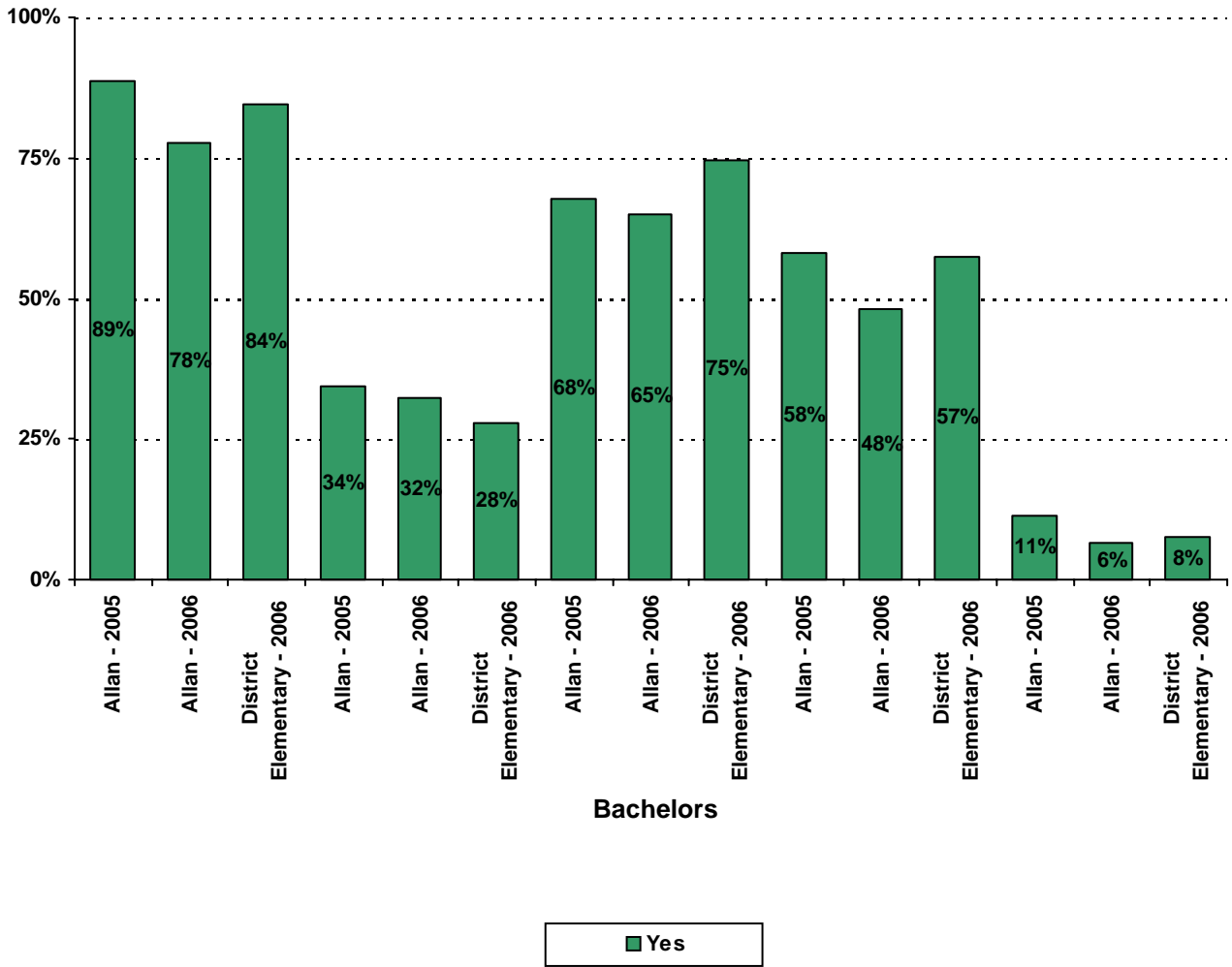


19. Which of the following activities do you participate in at your child's school:*



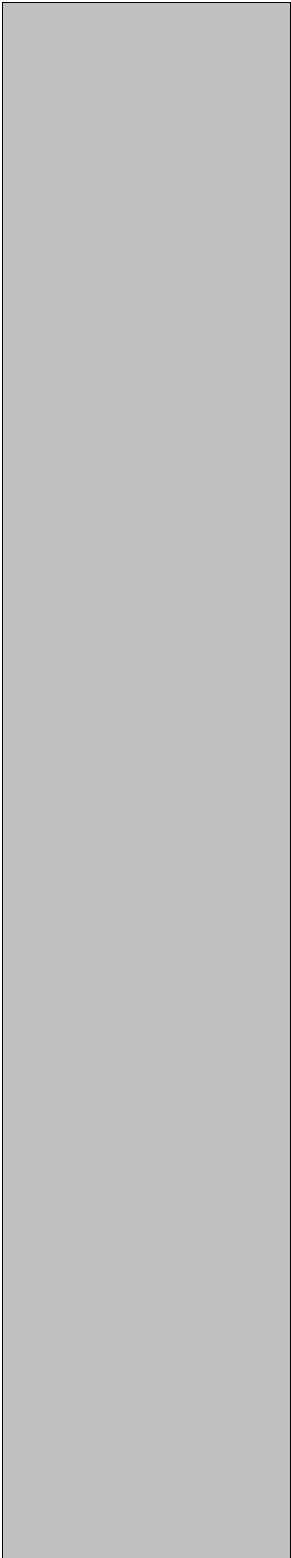
* Item(s) #17, #18, #19 added to the survey in 2006

20. My goals for my child include the following plans:



Disagree

Strongly
Disagree



Number of Allan Elementary School Parent Responses, by Response Option
(Continued)

		Strongly Agree	Agree	Disagree	Strongly Disagree	Don't Know/NA
13a.	n = 99	55	41	1	0	2
13b.	n = 100	50	40	4	2	4
13c.	n = 96	51	29	6	5	5
14a.	n = 102	49	38	6	2	7
14b.	n = 103	46	42	5	4	6
14c.	n = 99	43	40	4	3	9
15a.	n = 104	59	38	4	2	1
15b.	n = 101	44	42	8	1	6
15c.	n = 101	45	36	5	1	14
15d.	n = 98	47	31	5	2	13
15e.	n = 96	56	35	3	0	2
20.	n = 108					