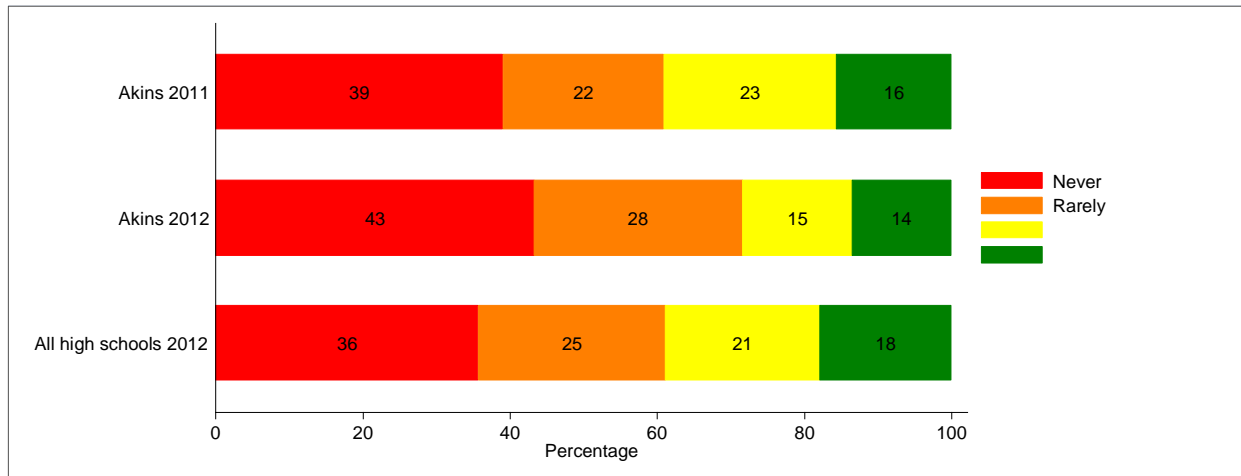




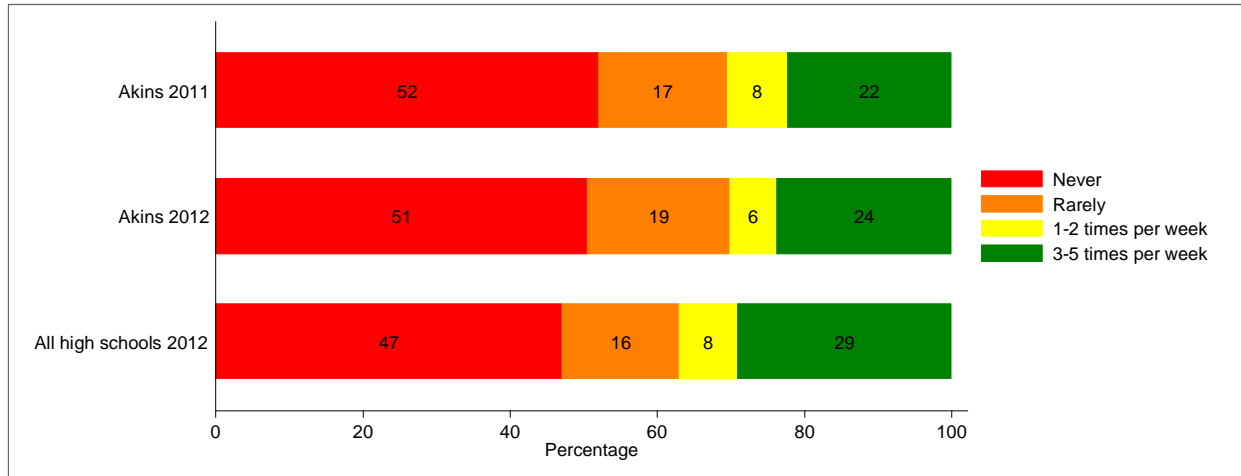
## RESPONDENT DEMOGRAPHICS



Q5. How often do you participate in other after school programs (e.g. clubs, art, technology, leadership, dance, etc.) ?



Q6. How often do you participate in organized school sports?



Q23: During this school year, have you brought any of the following items to school?

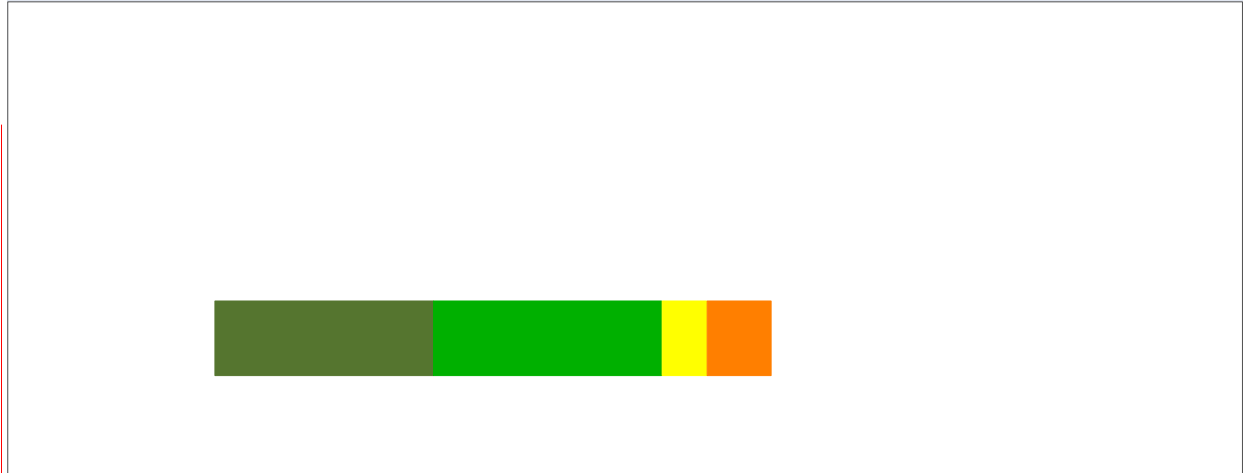
	Akins 2011-2012	Percentage point change from 2010-2011*	All high schools 2011-2012
Illegal drugs	12%		

Q26: Of the following, which do you consider to be the most serious problem on your campus?

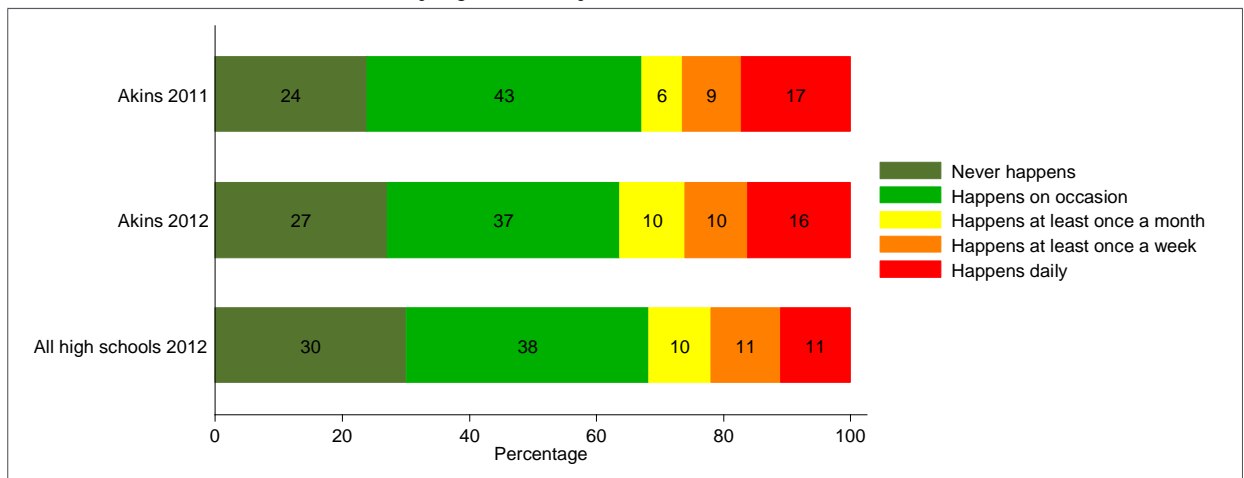
Akins 2011-2012	Percentage point change from 2010-2011*	All high
--------------------	---	----------

## SCHOOL SAFETY ITEMS

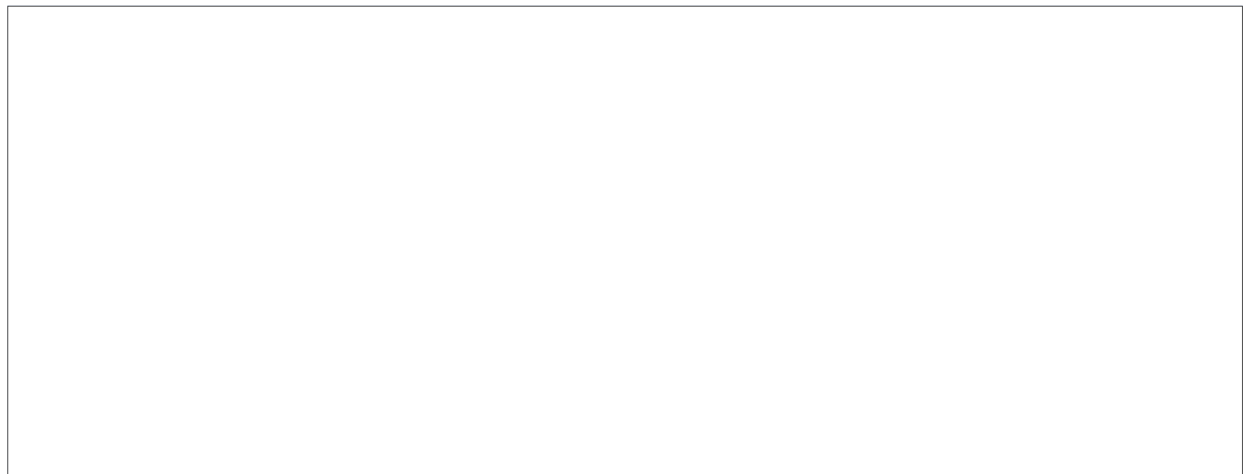
Q15a: How often does racial tension occur at your school?



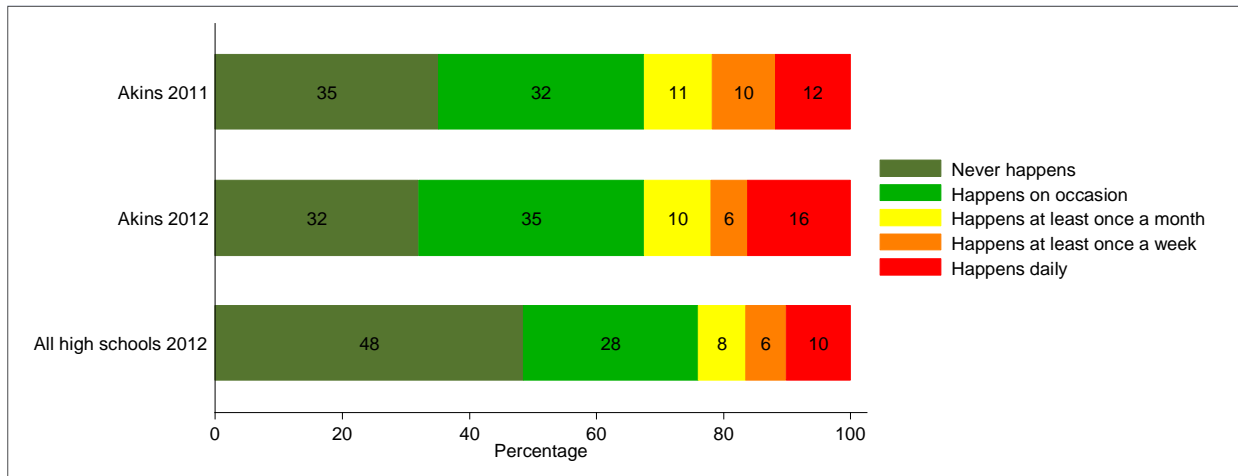
Q15b: How often does student bullying occur at your school?



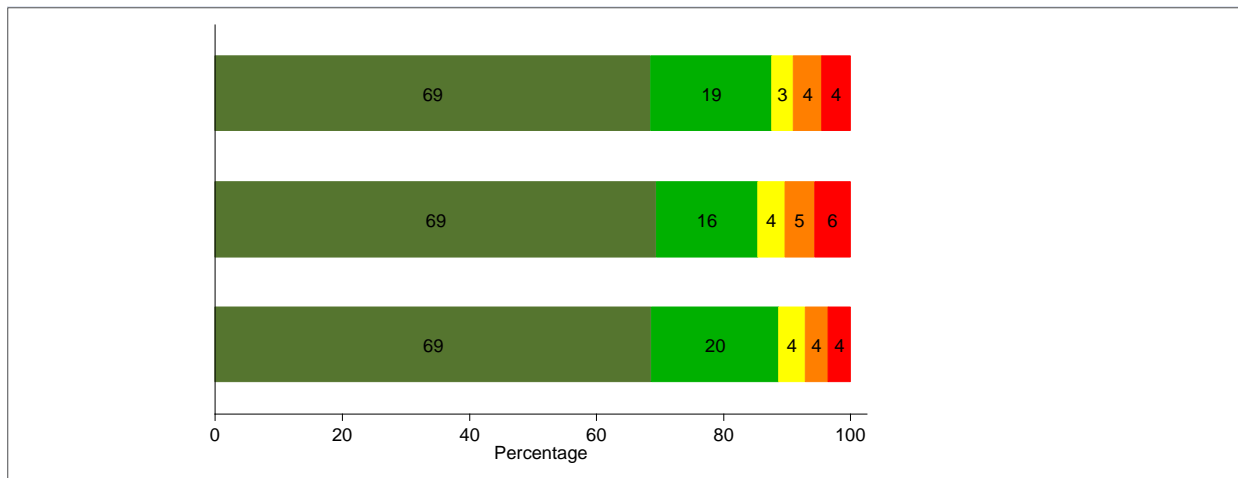
Q15c: How often do acts of disrespect for teachers occur at your school?



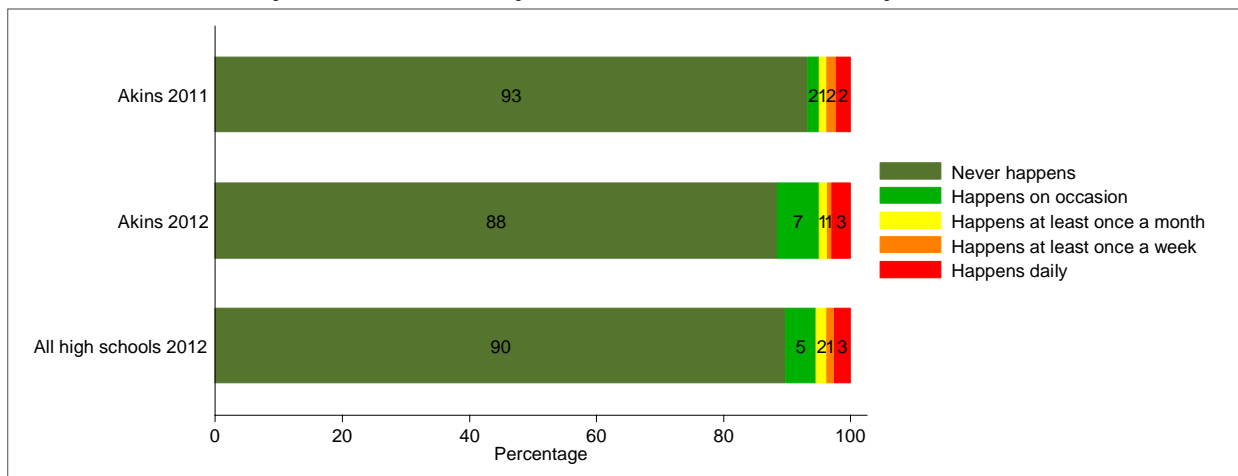
Q15d: How often do gang activities occur at your school?



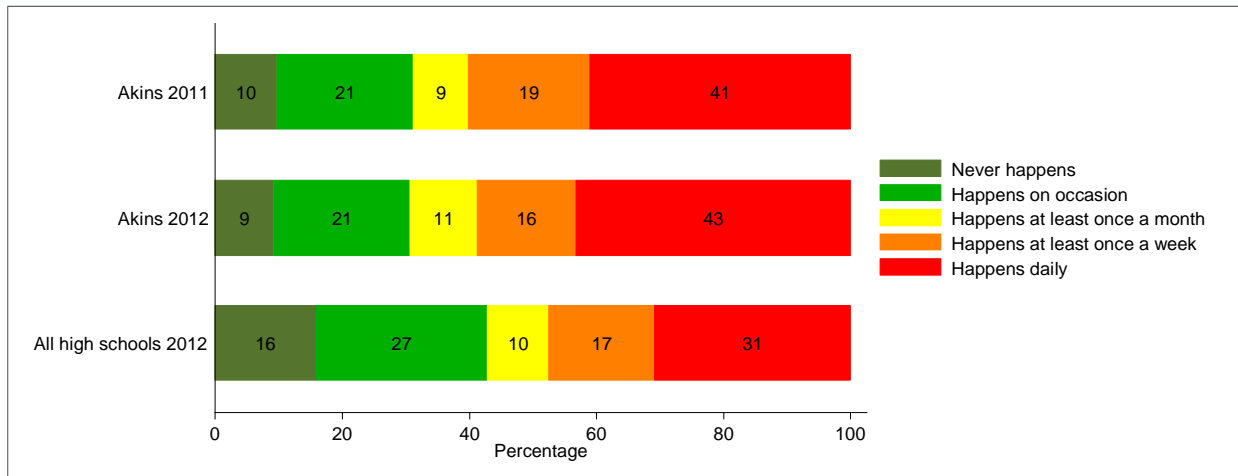
Q15e: How often have you experienced any type of bullying at your school?



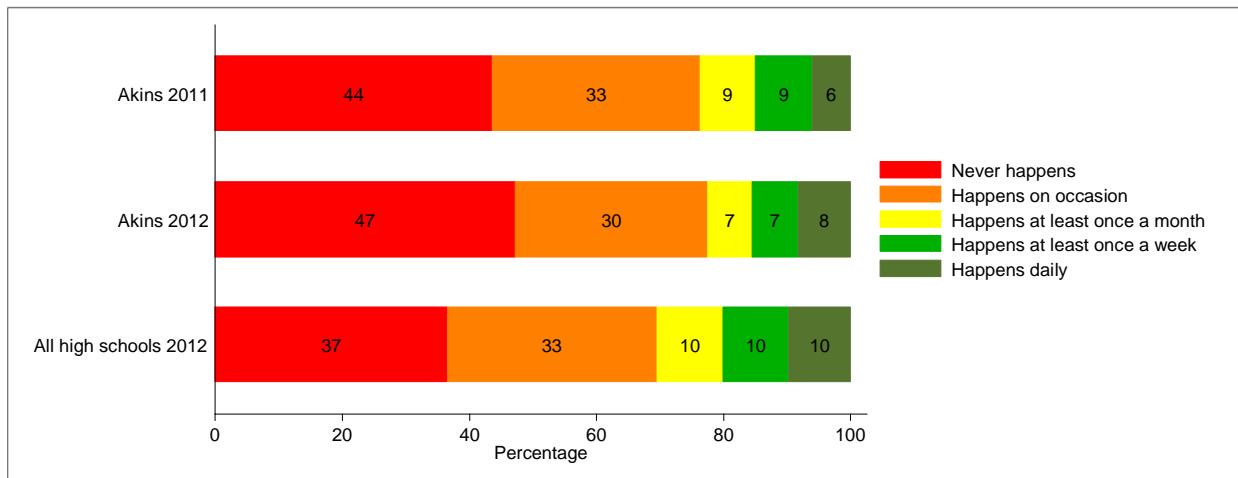
Q15f: How often were you absent because you did not feel safe on the way to/from school?



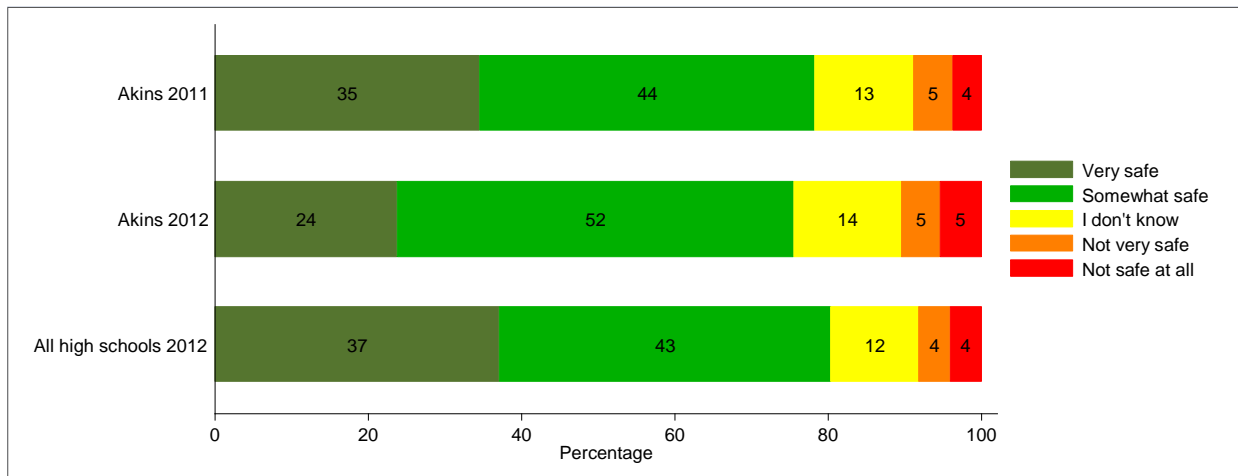
Q15g: How often does your teacher have to interrupt class to deal with student misbehavior?



Q15h: Do teachers or staff give you praise or rewards for good behavior?



Q8: How safe do you feel when you are at school?







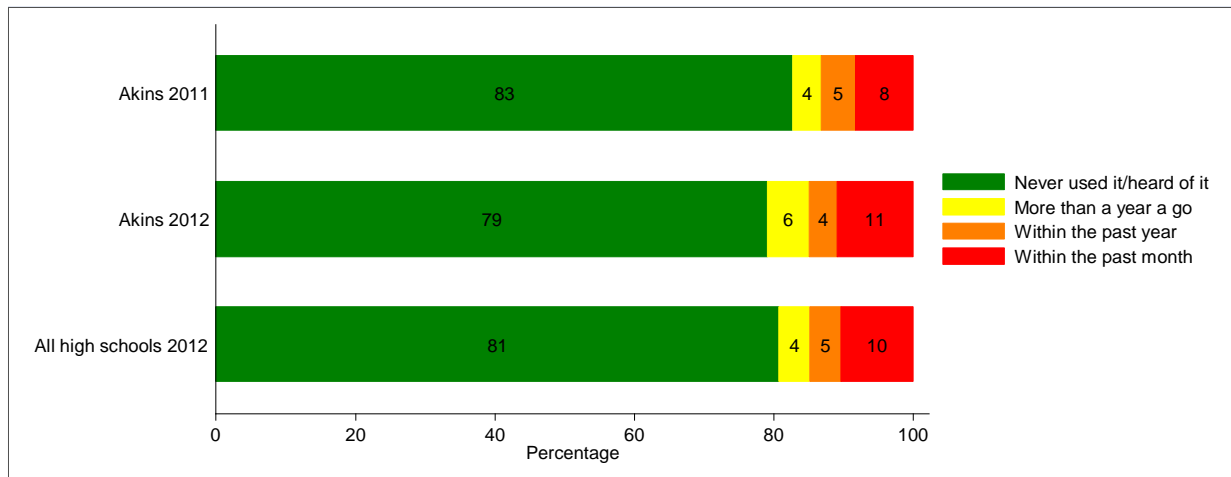




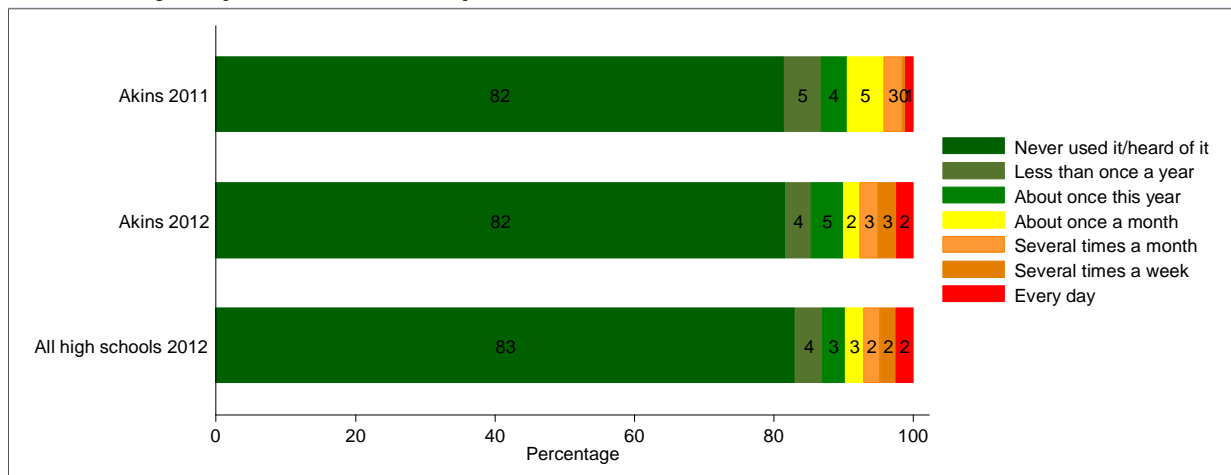
# SUBSTANCE USE ITEMS

## TOBACCO:

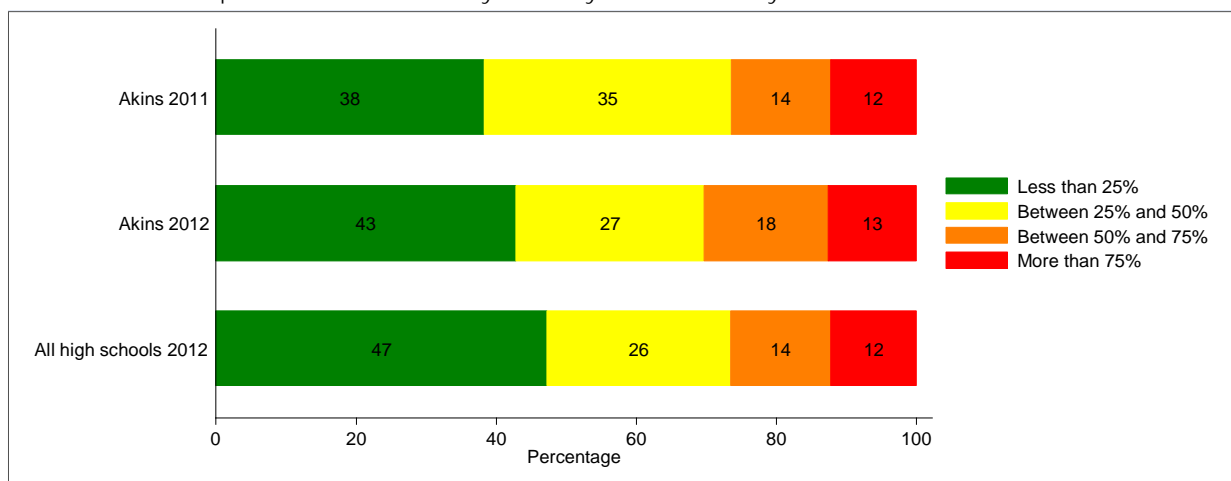
Q18a: What is the most recent you have used Tobacco?



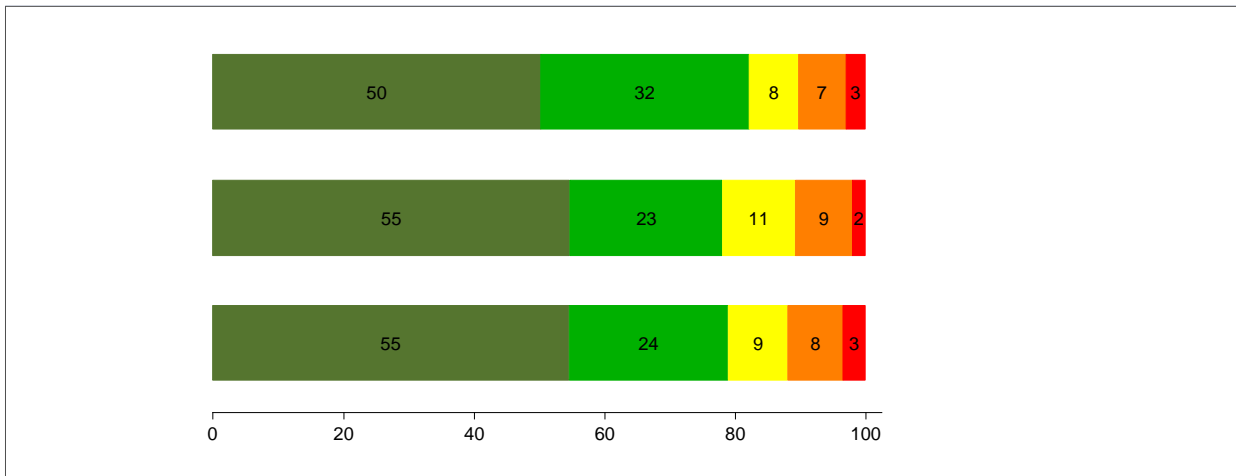
Q21a: During this year, how often did you use Tobacco?



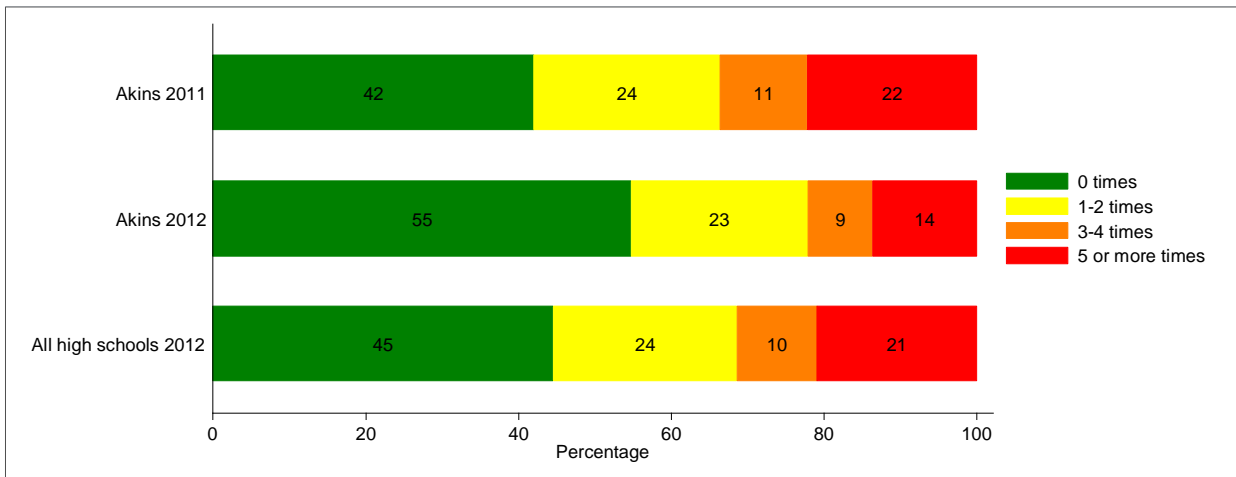
Q29a. Within the past month, how many kids at your school do you think have used Tobacco?



Q27a: How dangerous is it for kids your age to use Tobacco?

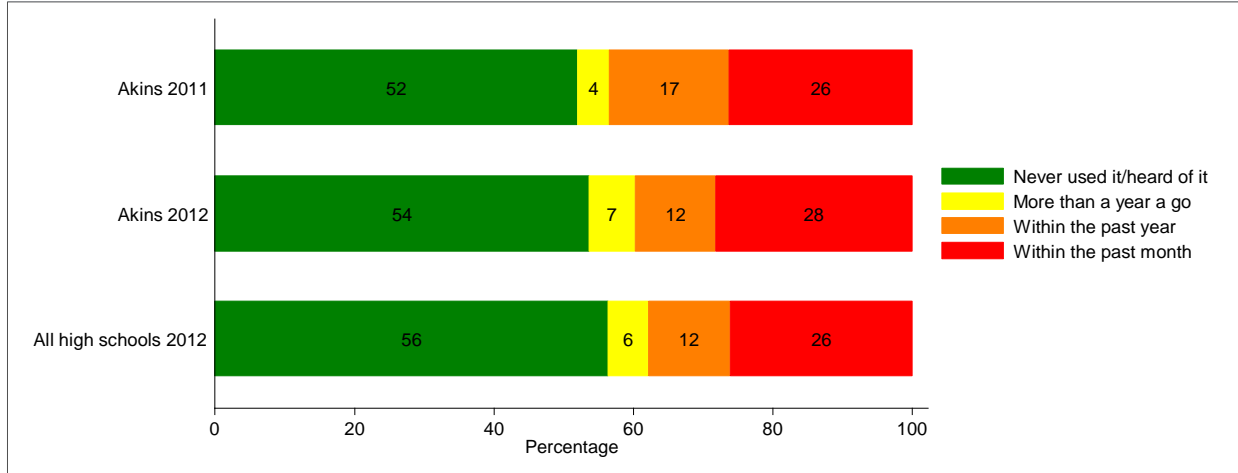


Q28g. During the school year, how many times have you experienced advertisements (TV, radio, billboard, magazine, internet, etc.) for tobacco products?

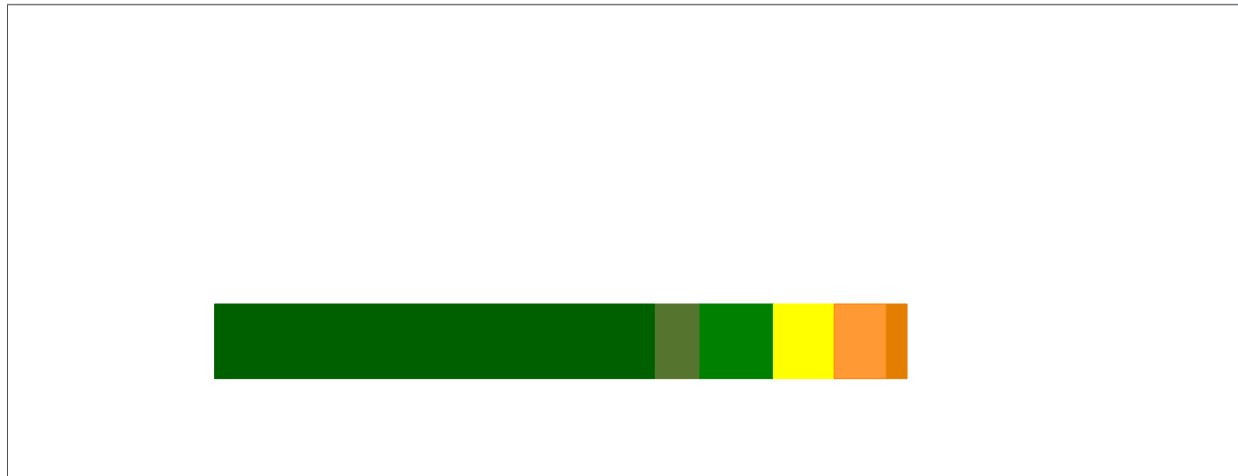


ALCOHOL:

Q18b: What is the most recent you have used Alcohol?

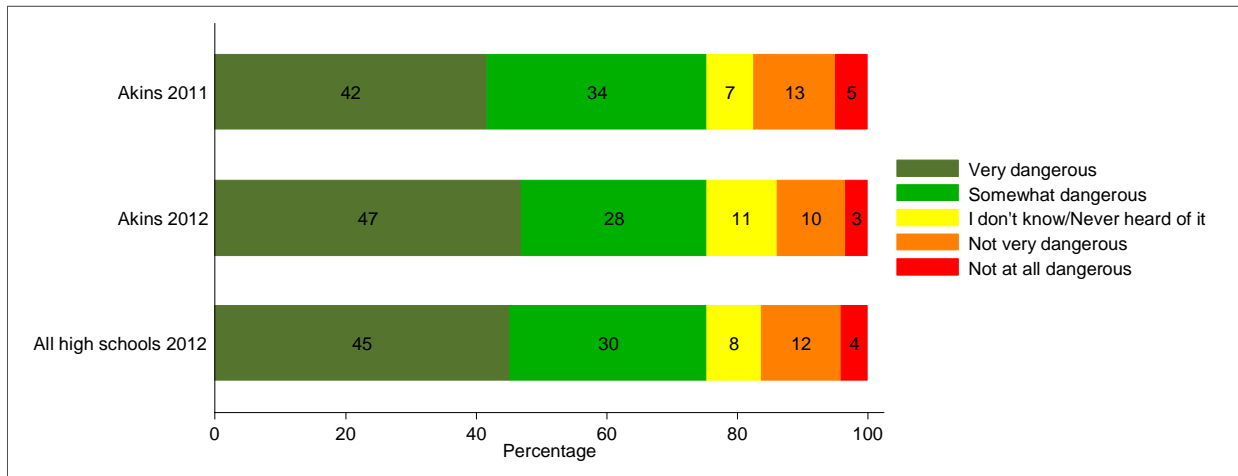


Q21b: During this year, how often did you use Alcohol?

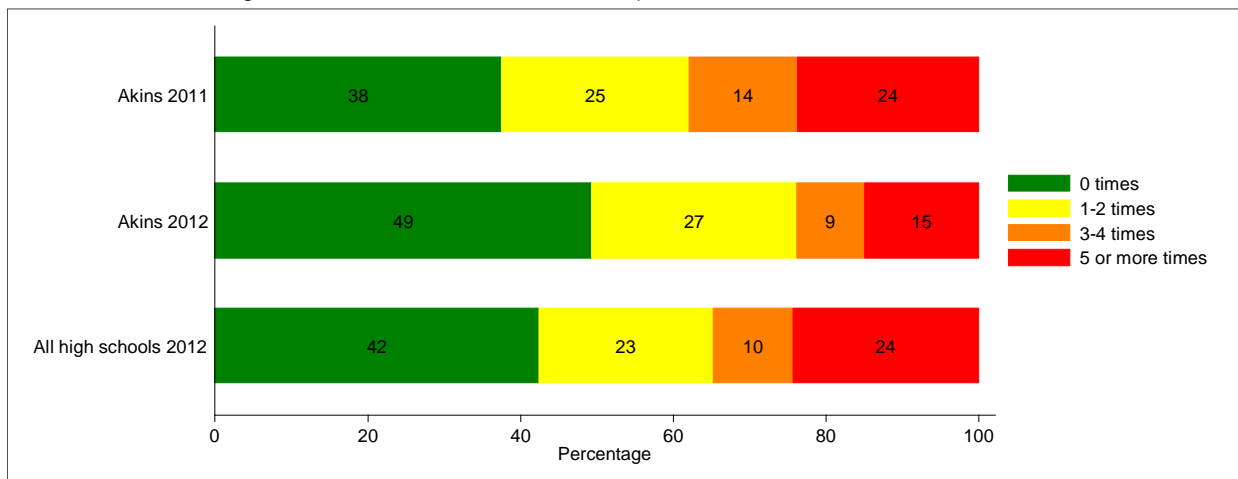


Q29b. Within the past month, how many kids at your school do you think have used Alcohol?

Q27b: How dangerous is it for kids your age to use Alcohol?

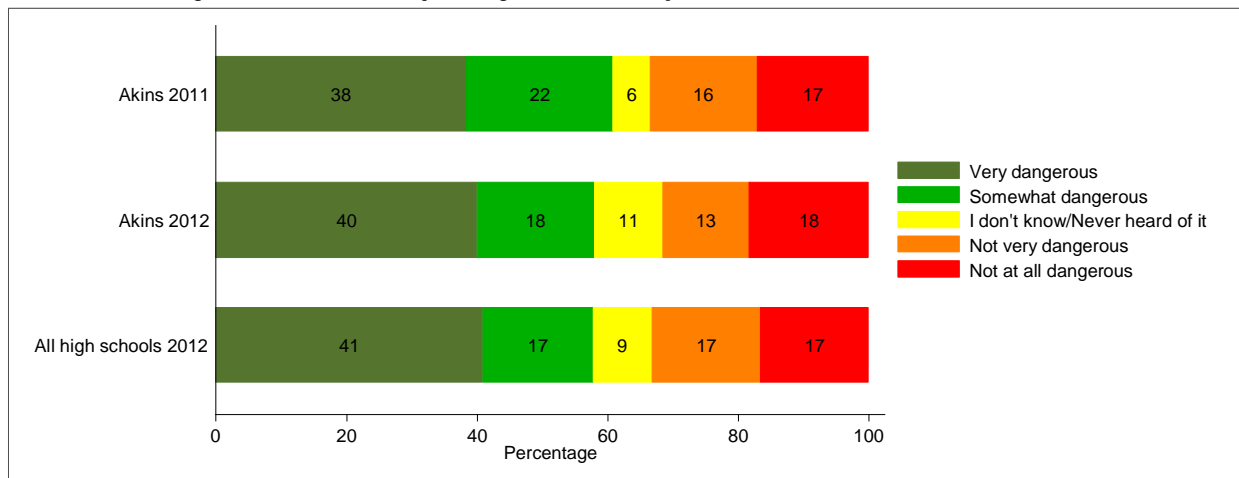


Q28f. During the school year, how many times have you experienced advertisements (TV, radio, billboard, magazine, internet, etc.) for alcohol products?





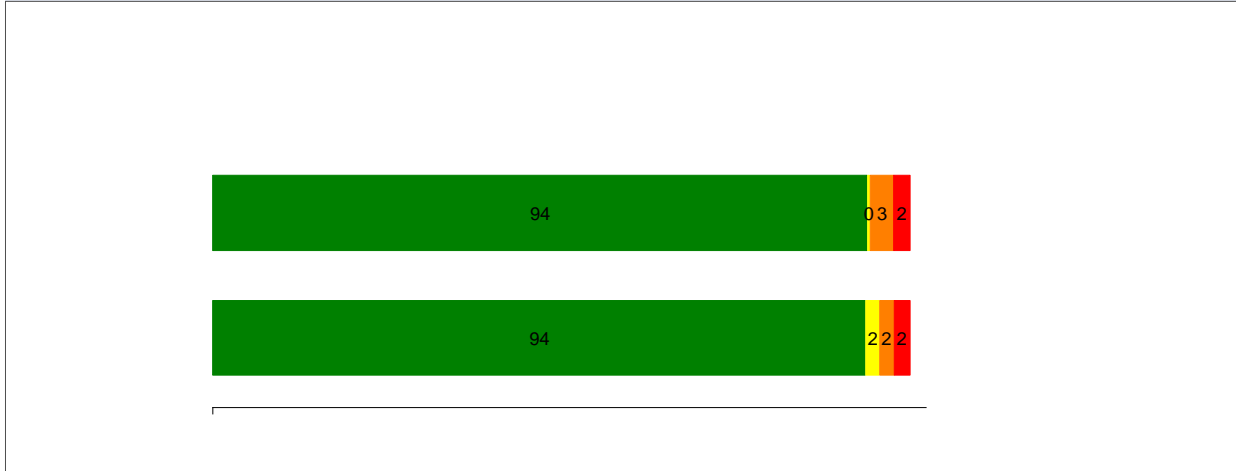
Q27c: How dangerous is it for kids your age to use Marijuana?





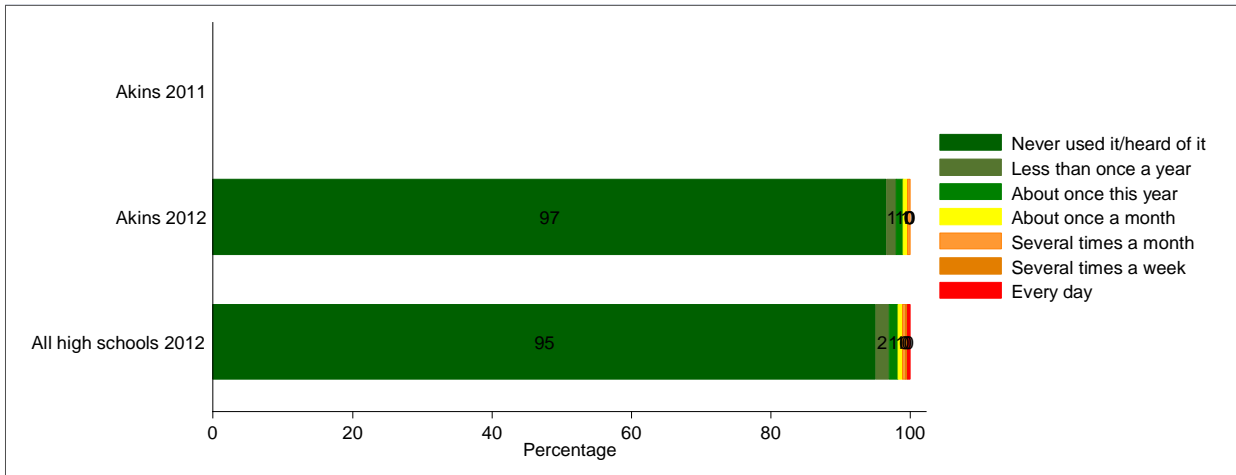
K2 OR SPICE:

Q18d: What is the most recent you have used K2 or Spice?



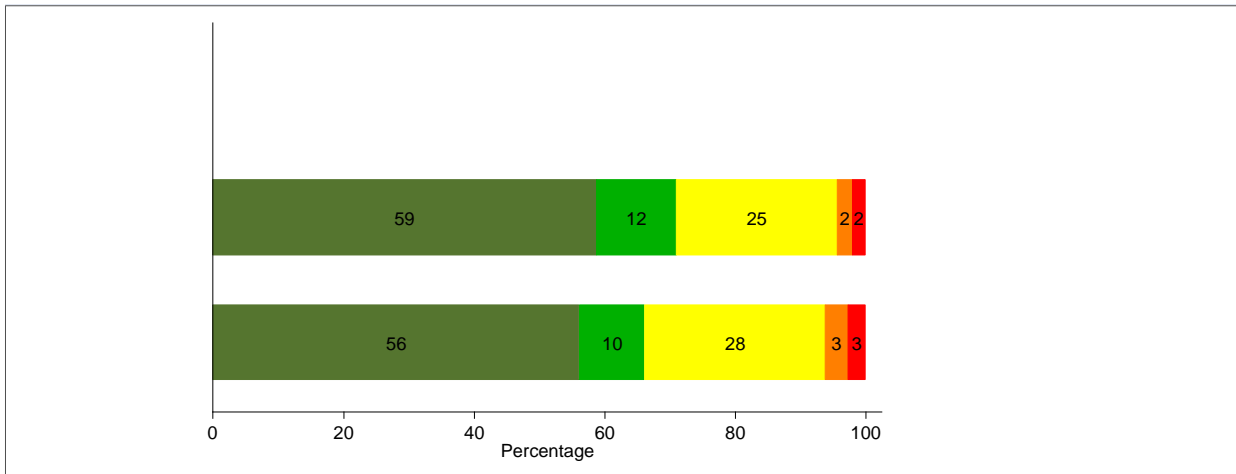
Note: This question was not asked in the 2010-2011 survey.

Q21d: During this year, how often did you use K2 or Spice?



Note: This question was not asked in the 2010-2011 survey.

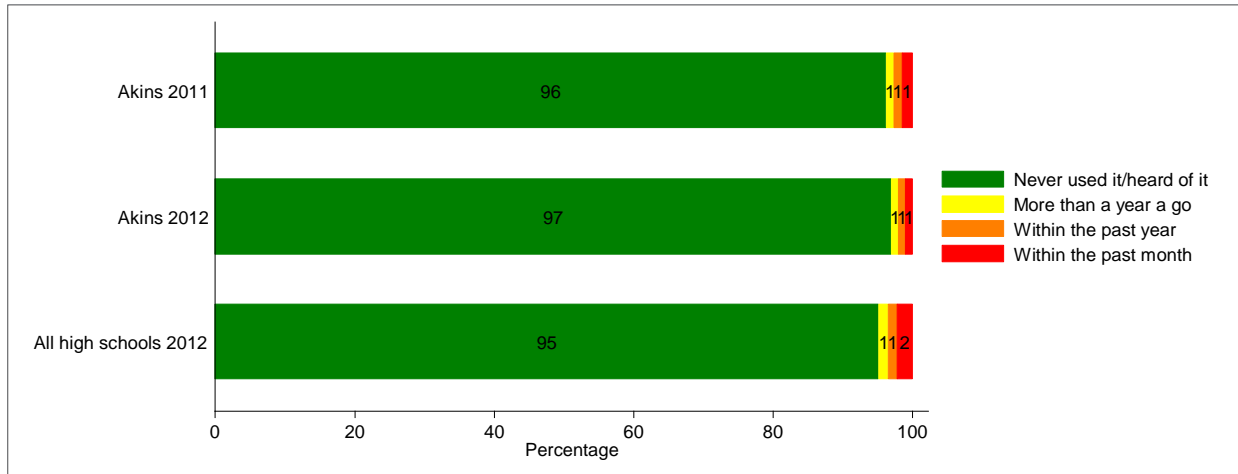
Q27d: How dangerous is it for kids your age to use K2 or Spice?



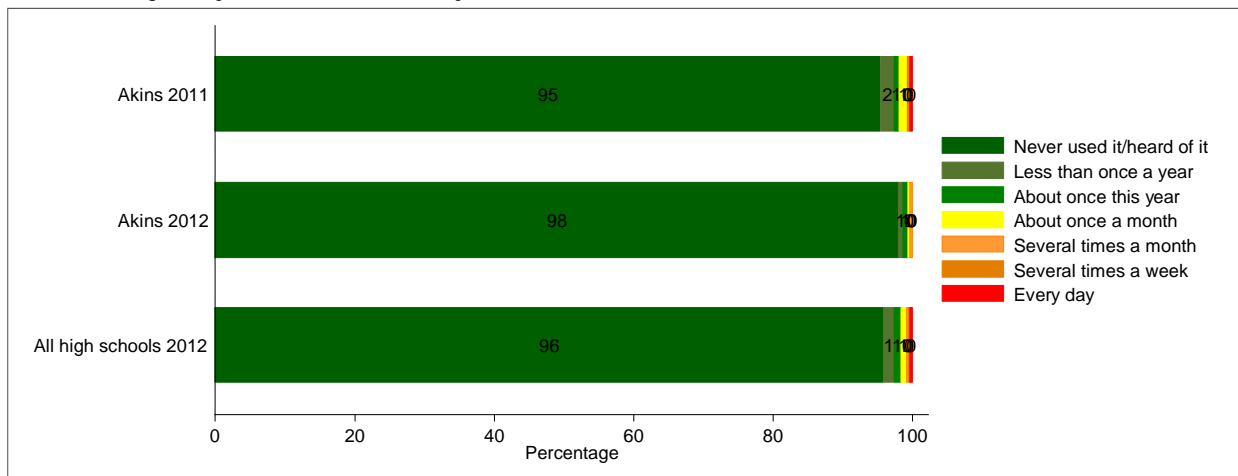
Note: This question was not asked in the 2010-2011 survey.

INHALANTS:

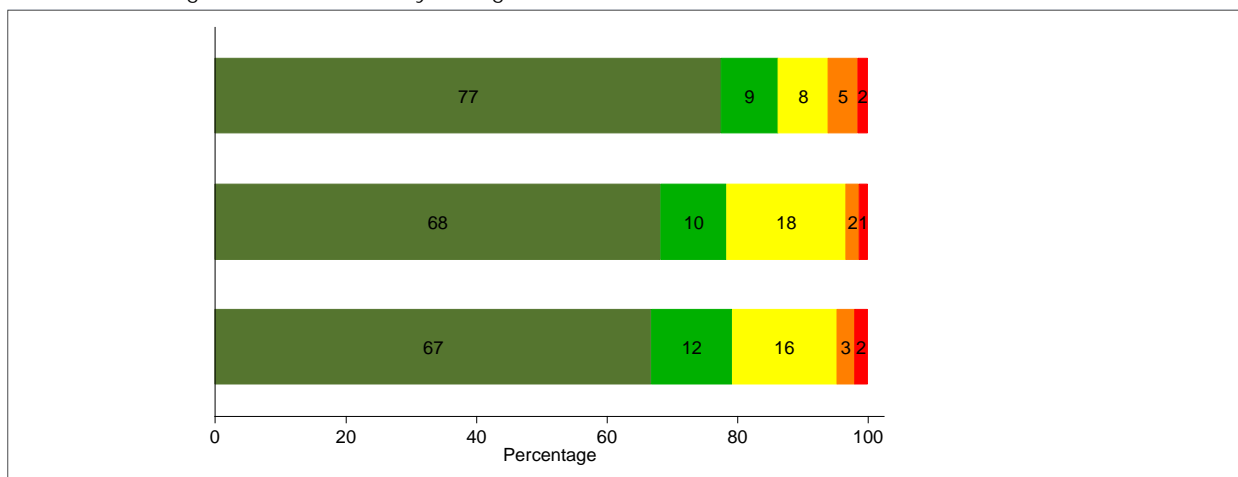
Q18e: What is the most recent you have used Inhalants?



Q21e: During this year, how often did you use Inhalants?

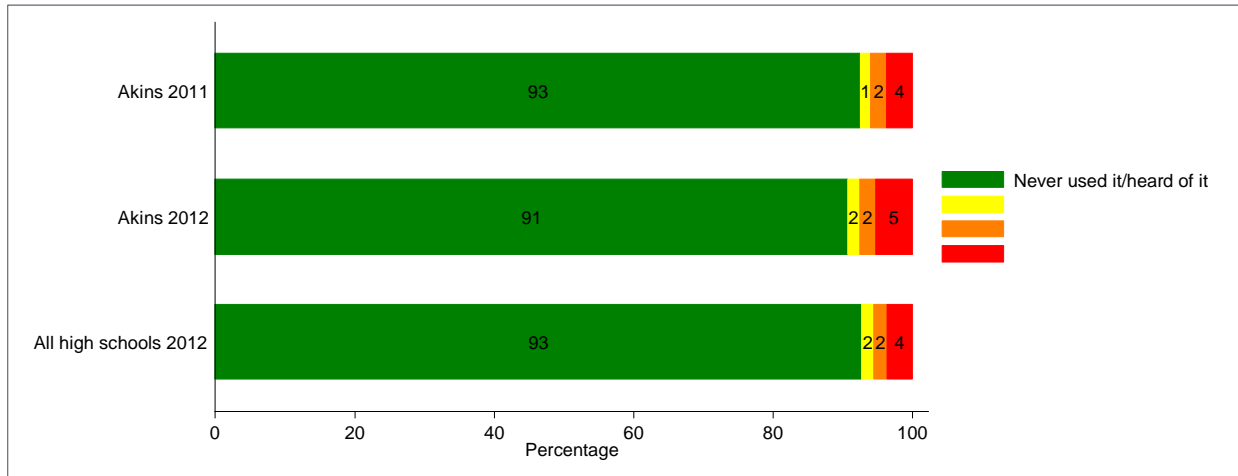


Q27e: How dangerous is it for kids your age to use Inhalants?

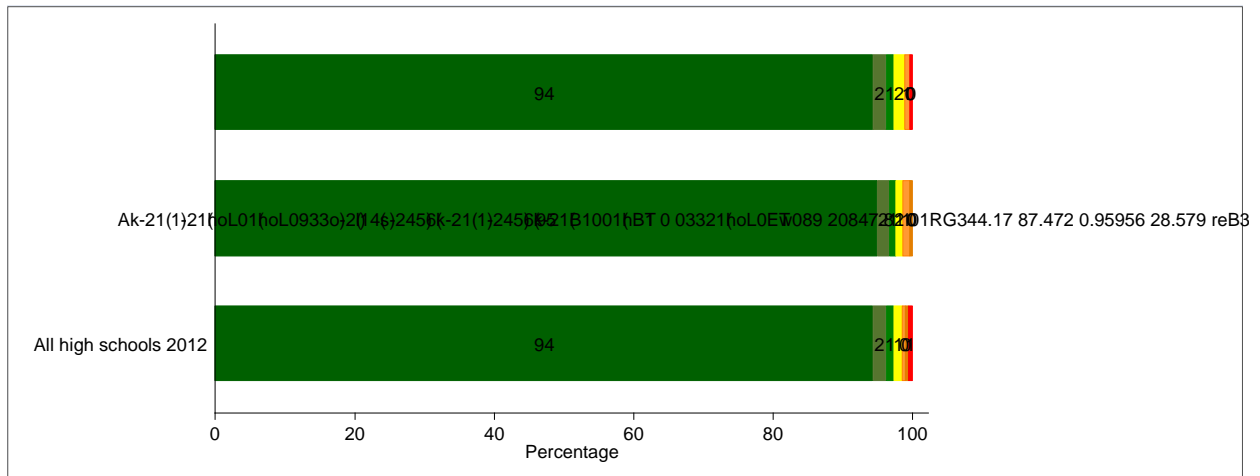


OVER THE COUNTER MEDICATION:

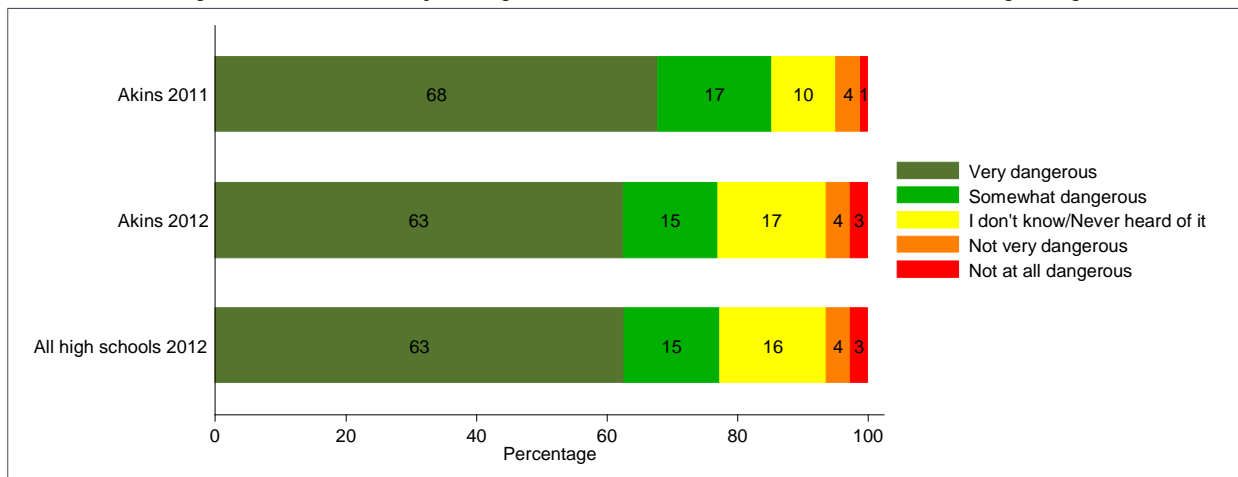
Q18f: What is the most recent you have used Over the Counter Medication to get high?



Q21f: During this year, how often did you use Over the Counter Medication to get high?

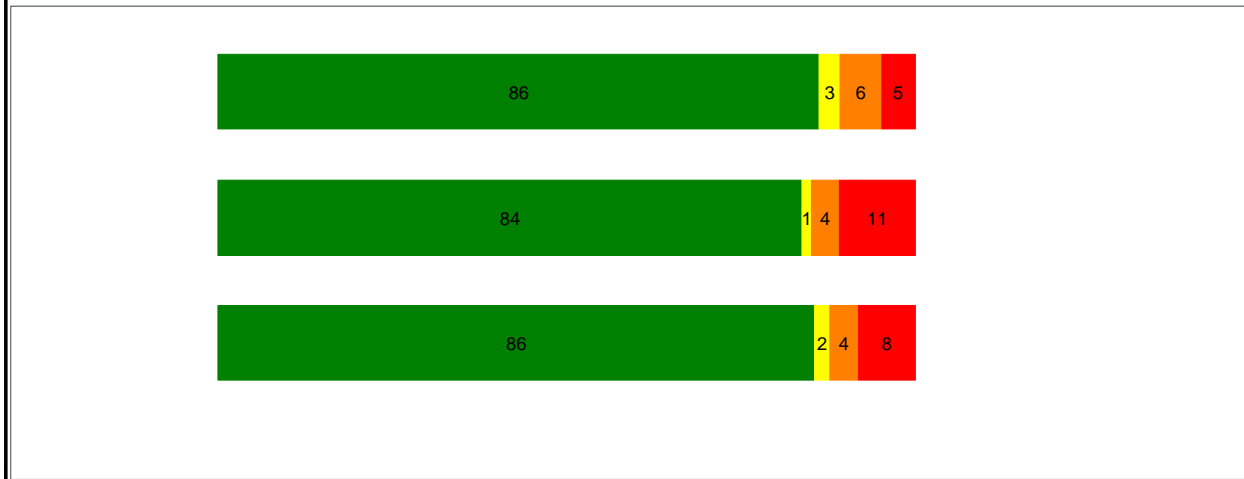


Q27f: How dangerous is it for kids your age to use Over the Counter Medication to get high?

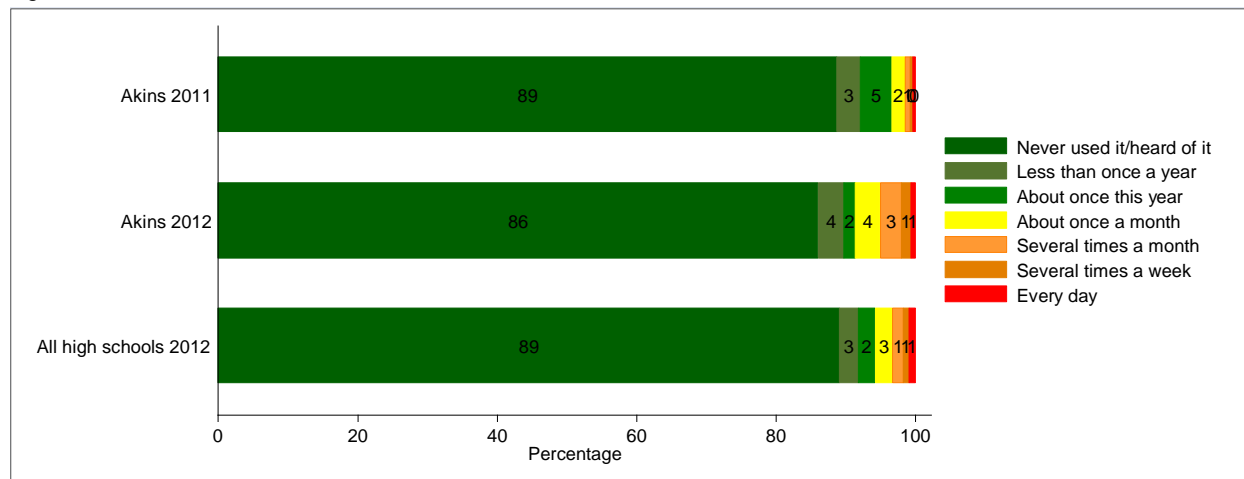


PRESCRIPTION DRUGS:

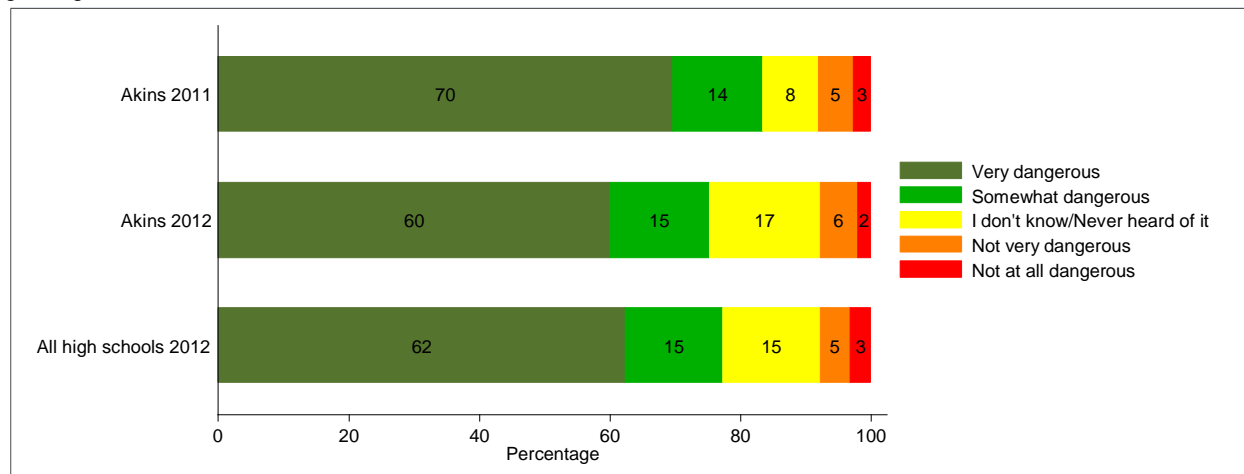
Q18g: What is the most recent you have used Prescription Drugs that were not prescribed to you to get high?



Q21g: During this year, how often did you use Prescription Drugs that were not prescribed to you to get high?



Q27g: How dangerous is it for kids your age to use Prescription Drugs that are not prescribed to you to get high?

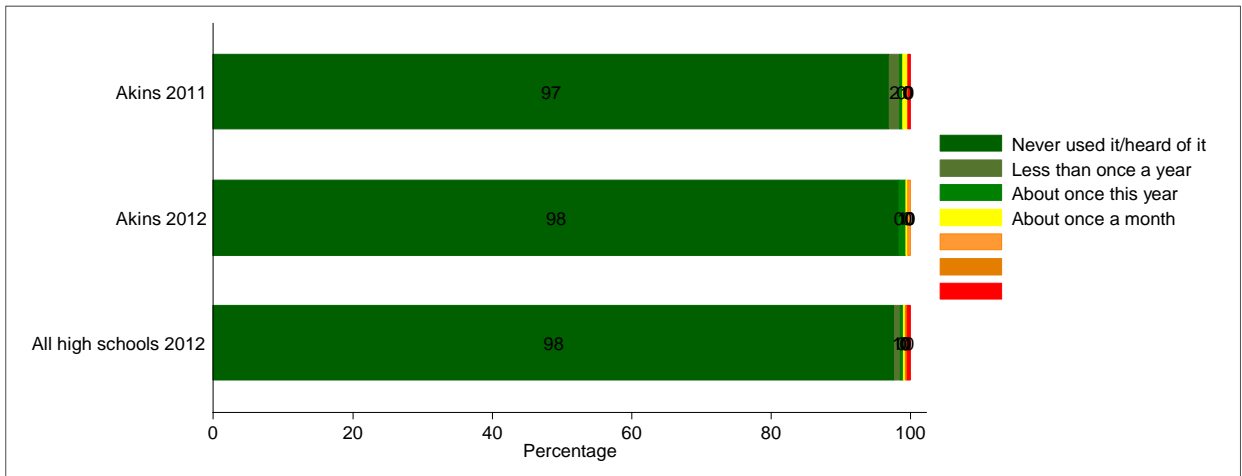


STEROIDS OR PERFORMANCE ENHANCING DRUGS:

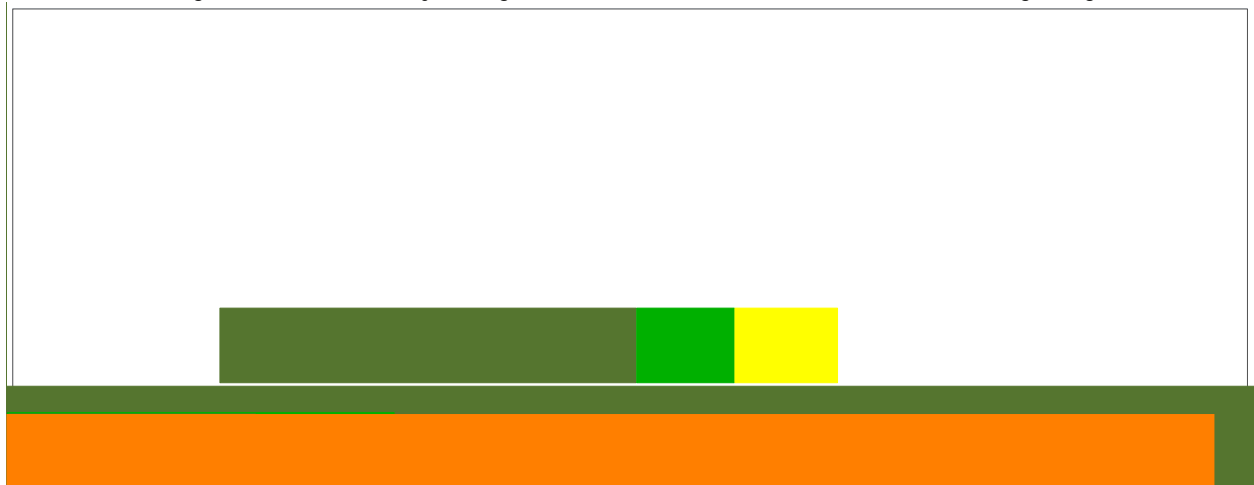
Q18h: What is the most recent you have used Steroids or Performance Enhancing Drugs?



Q21h: During this year, how often did you use Steroids or Performance Enhancing Drugs?

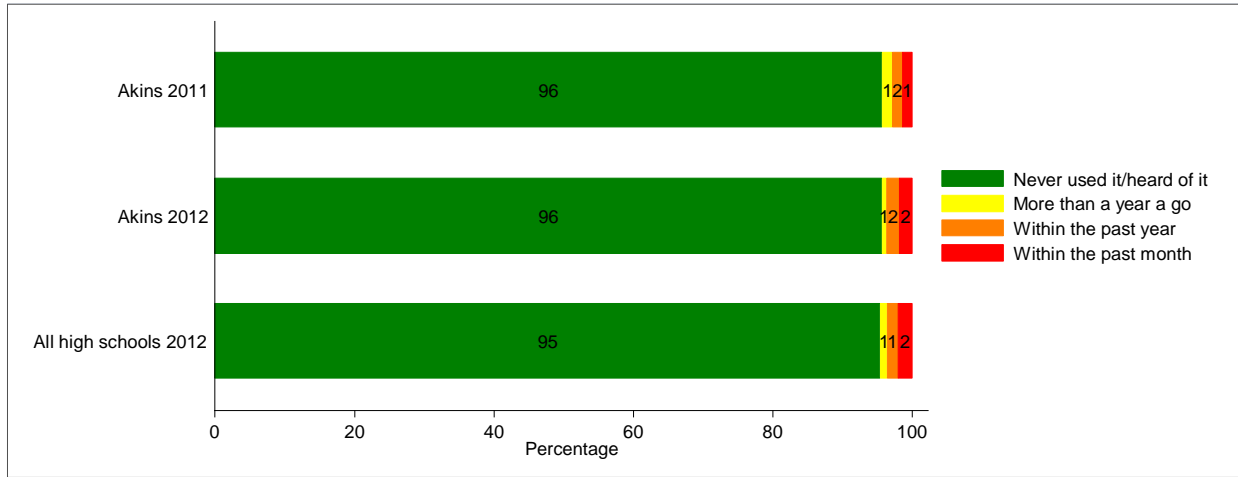


Q27h: How dangerous is it for kids your age to use Steroids or Performance Enhancing Drugs?

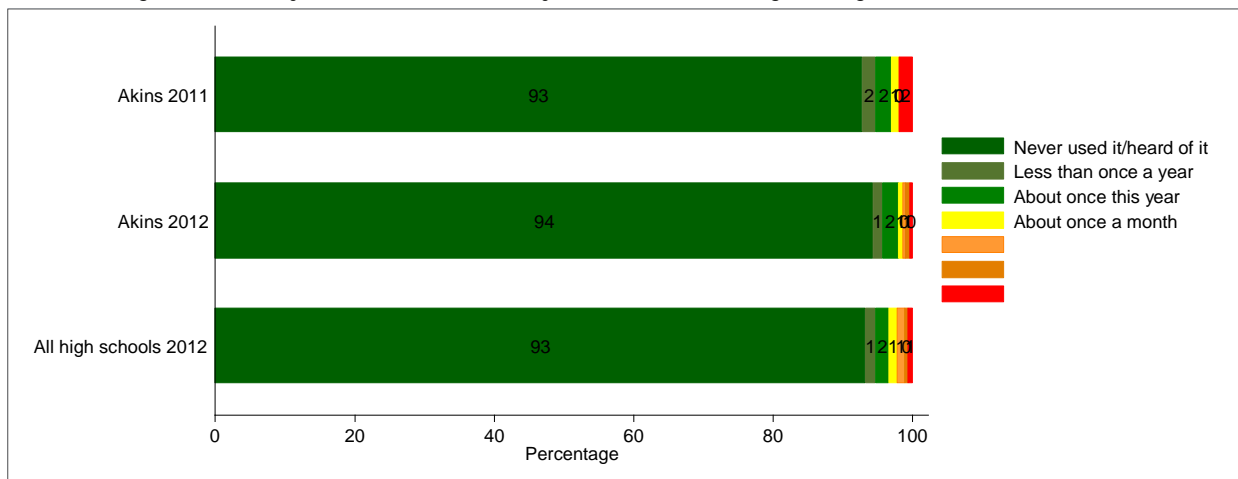


OTHER ILLEGAL DRUGS:

Q18i: What is the most recent you have used Other Illegal Drugs (e.g. cocaine, ecstasy, hallucinogens, heroin, methamphetamines)?



Q21i: During this school year how often have you used Other Illegal Drugs?





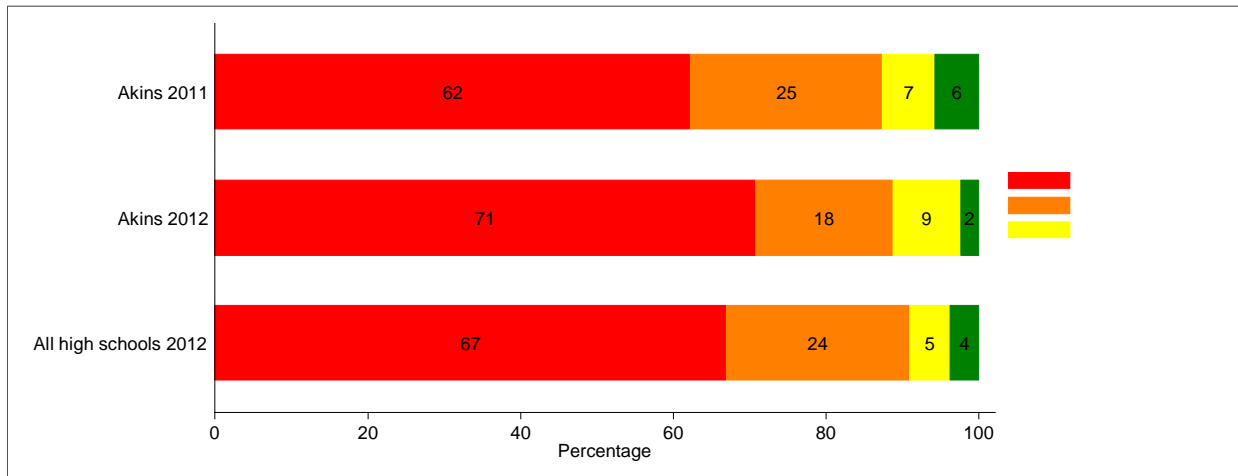




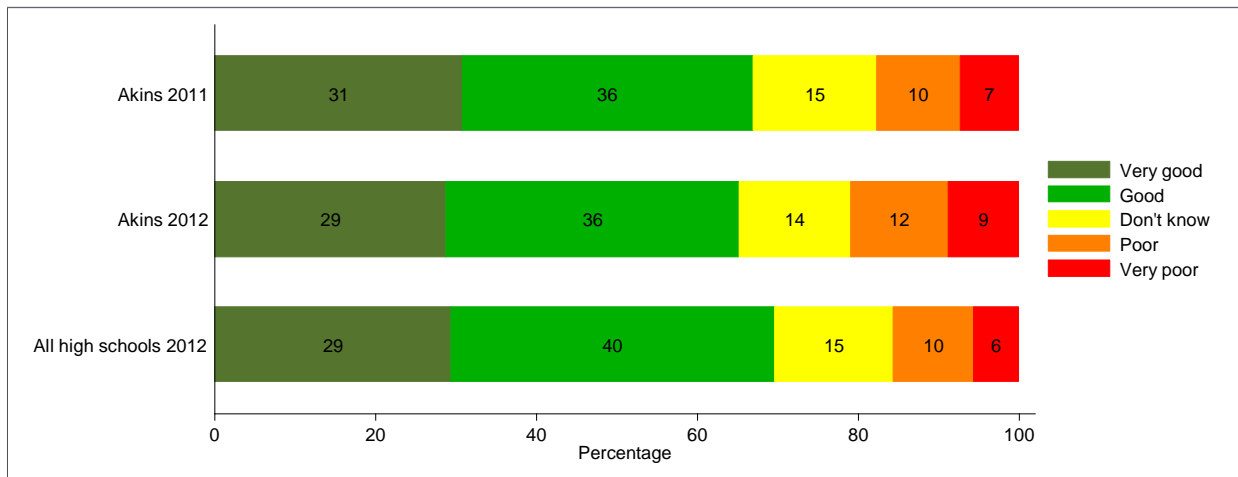


Q28b. During the school year, how many times have you experienced presentations by people

Q28e. During the school year, how many times have you experienced printed materials with cartoons and stories about how students avoid substance abuse?



Q30. How good is your ability to cope with stress and negative emotions?



SUPERINTENDENT OF  
SCHOOLS  
Meria J. Carstarphen Ed.D.

OFFICE OF  
ACCOUNTABILITY  
William H. Caritj, M.Ed.

DEPARTMENT OF  
R

