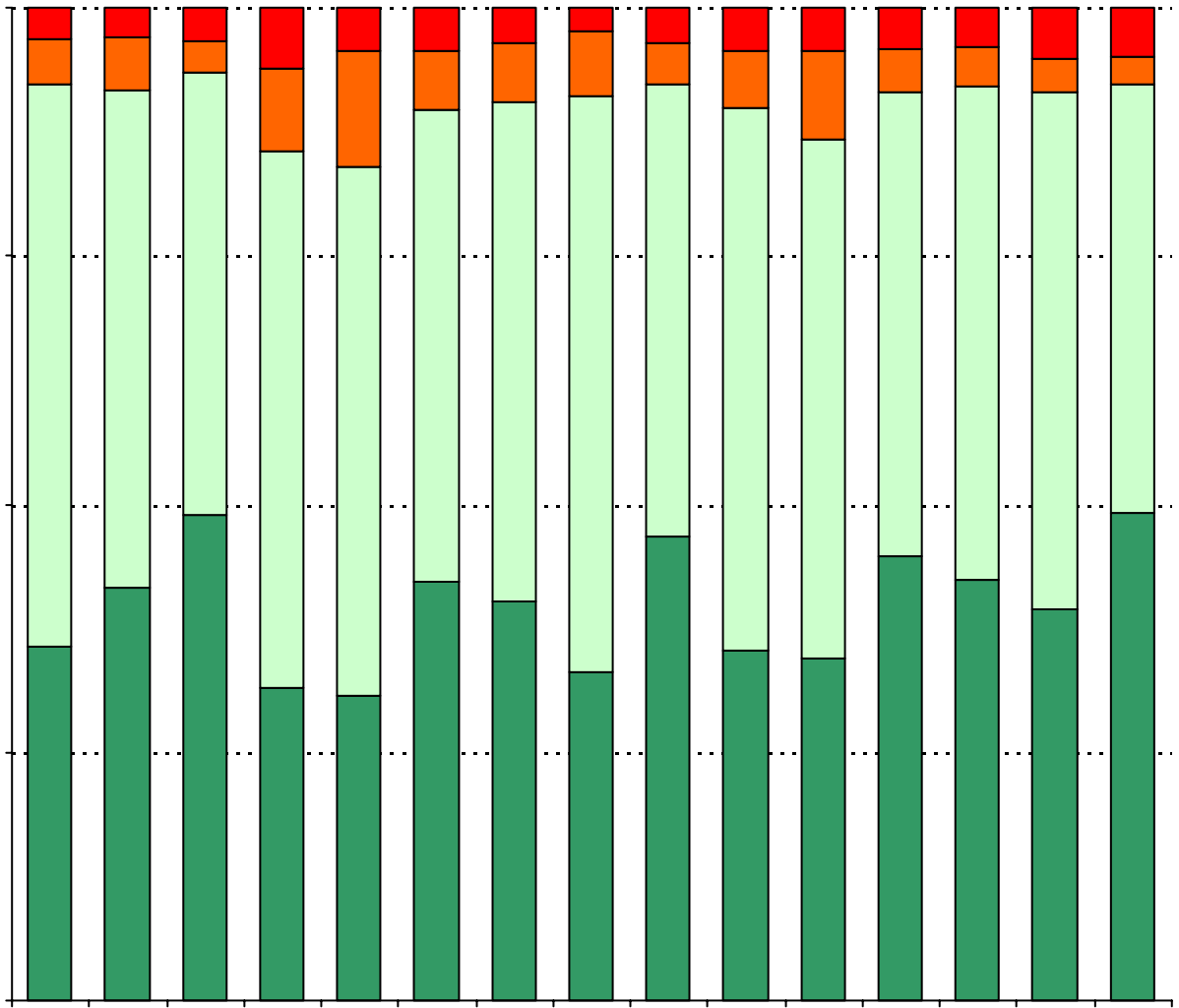
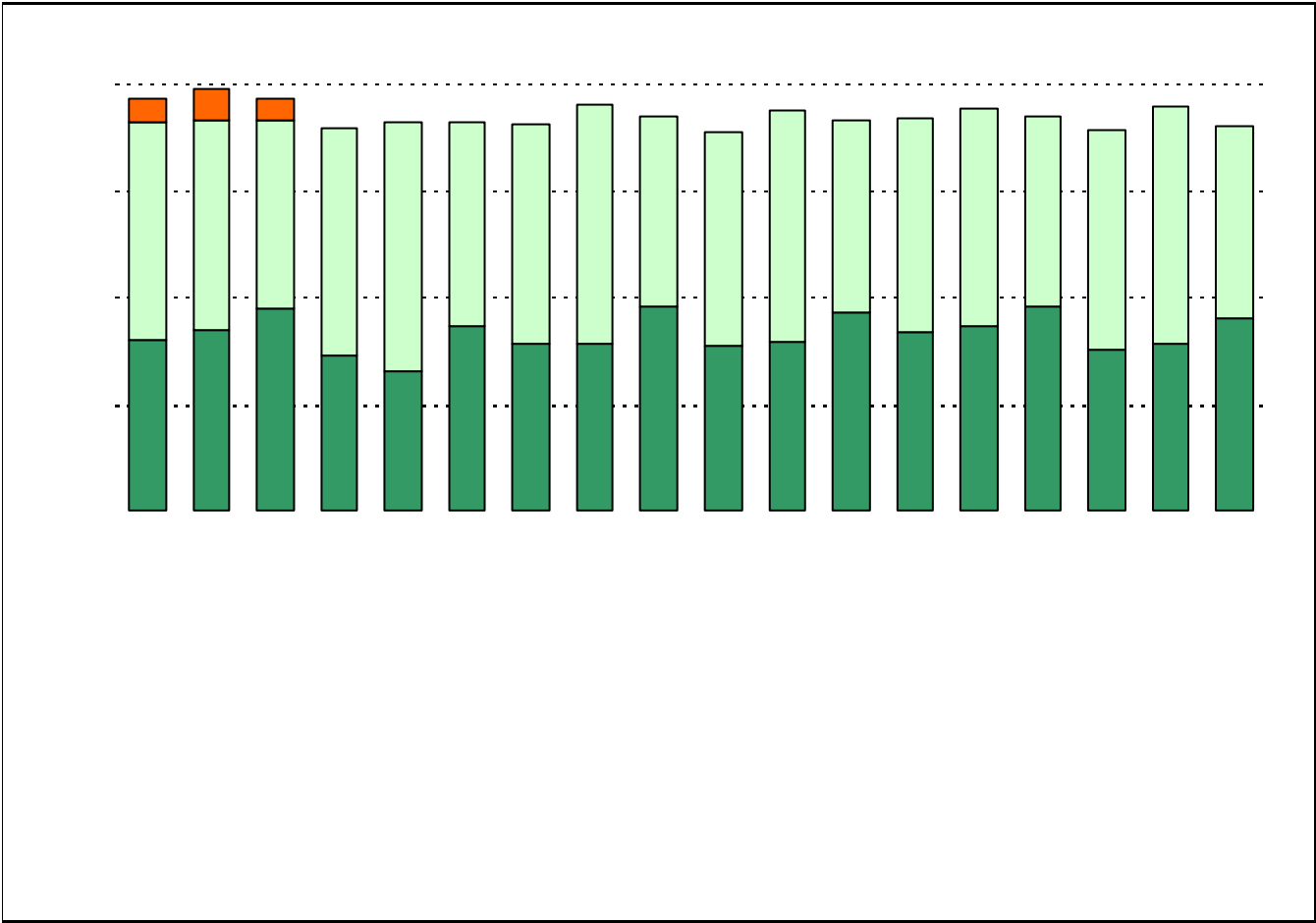


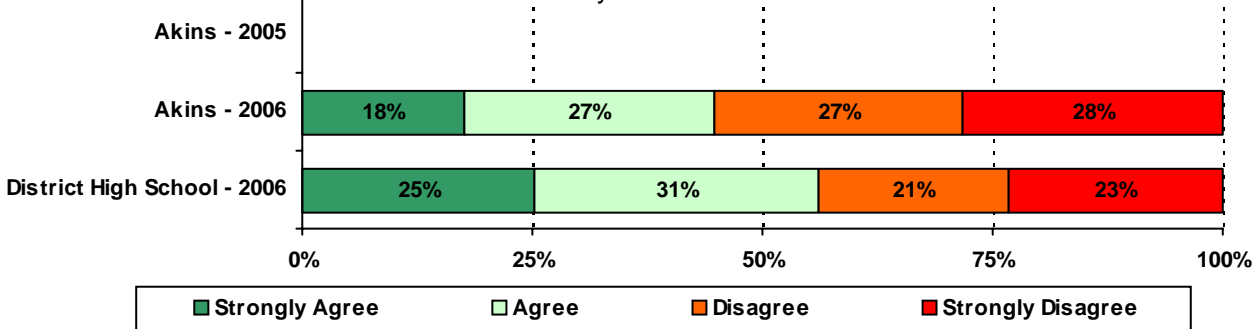
How many parents responded to the survey in 2005-2006 and 2006-2007, and how does this compare to the number of students in the population each year?





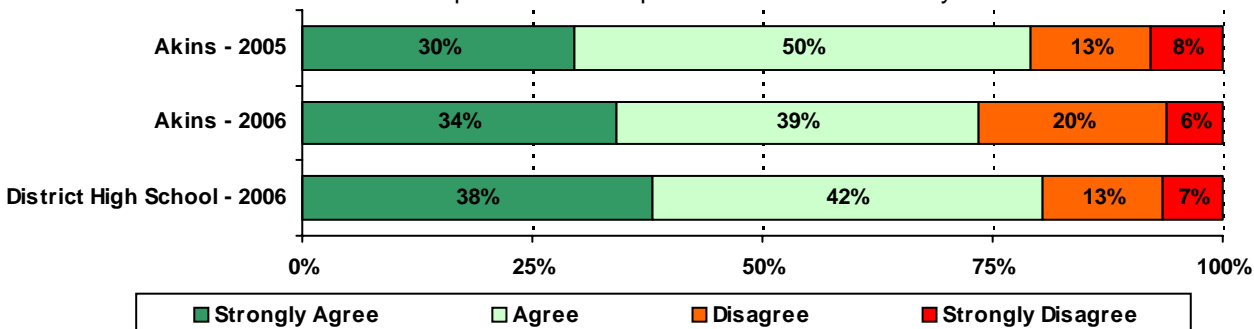


10. The Parent Support Specialist at my Child's School has made me more aware of AISD support services and community resources in Austin.*

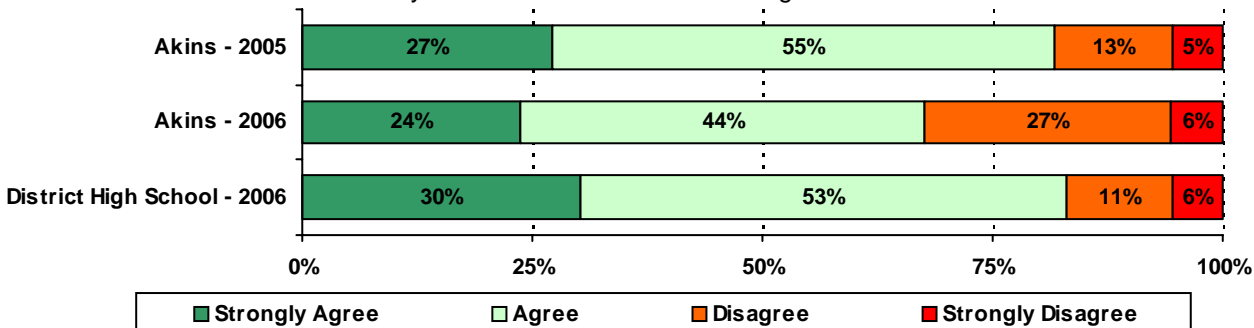


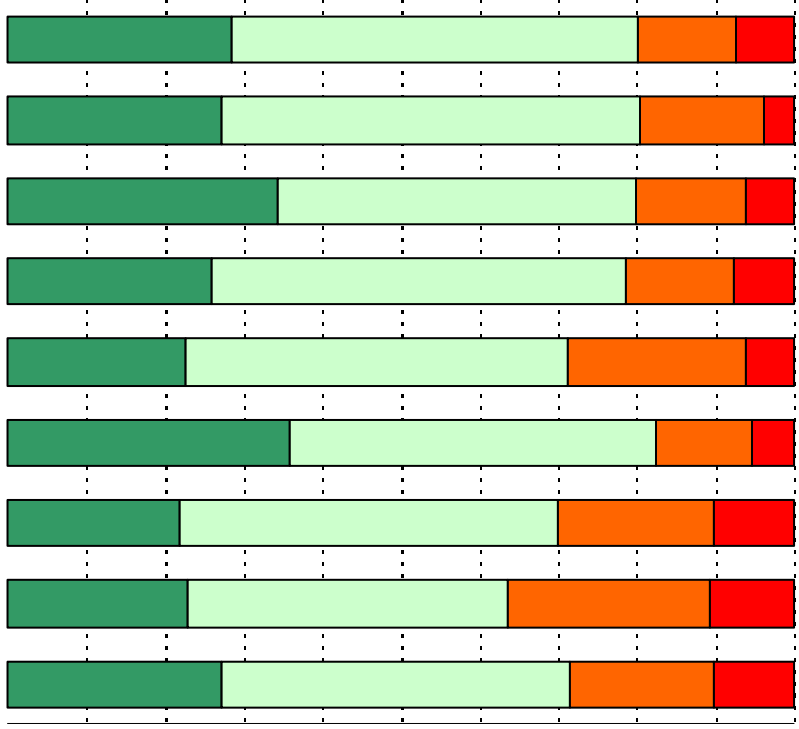
* Item #10 was added to the survey in 2006

11. School staff provide me with positive feedback about my child.

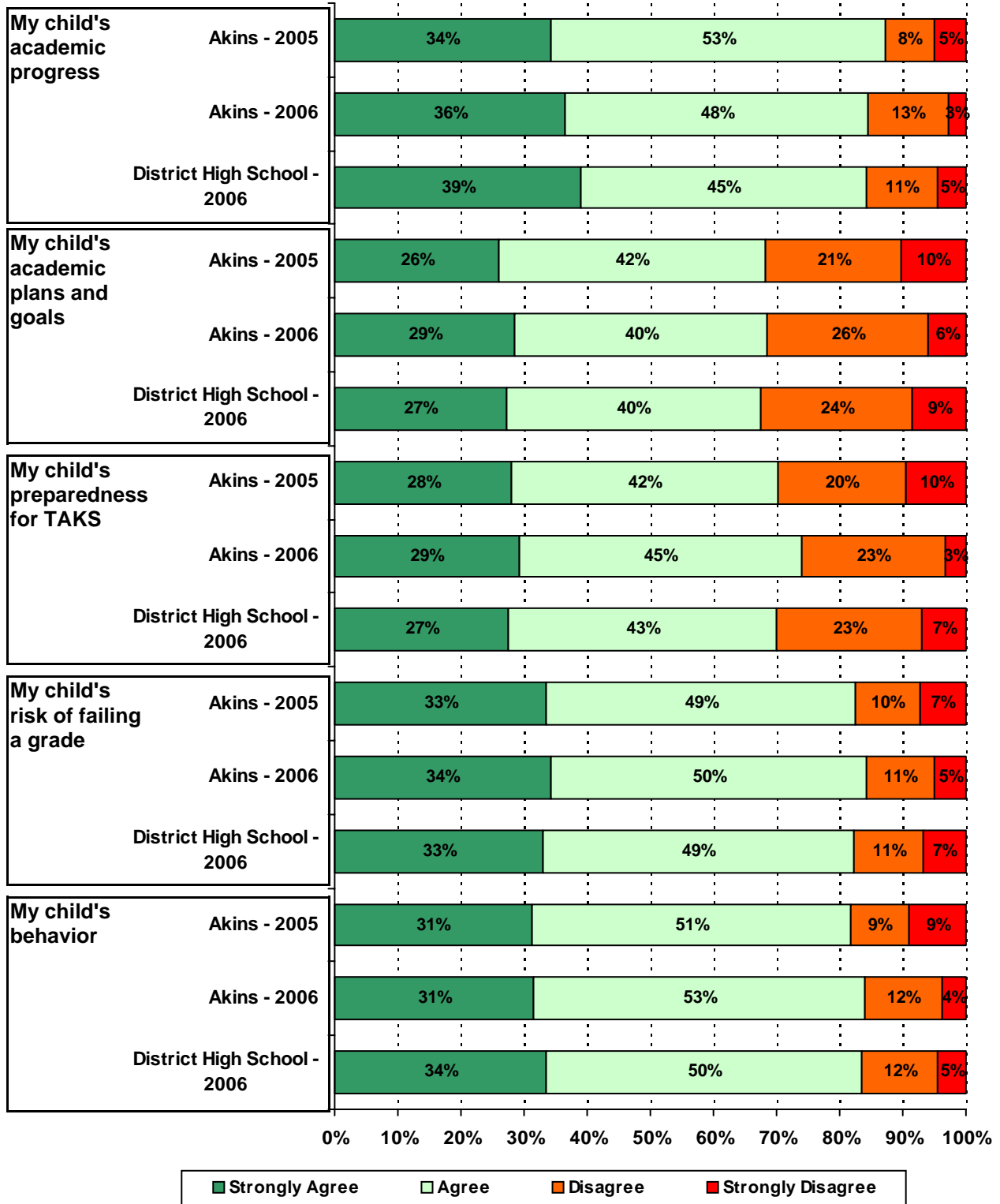


12. My child's school is a safe learning environment.





15. School staff provide me with enough of the following information about my child:



.....

.....

.....

.....

.....

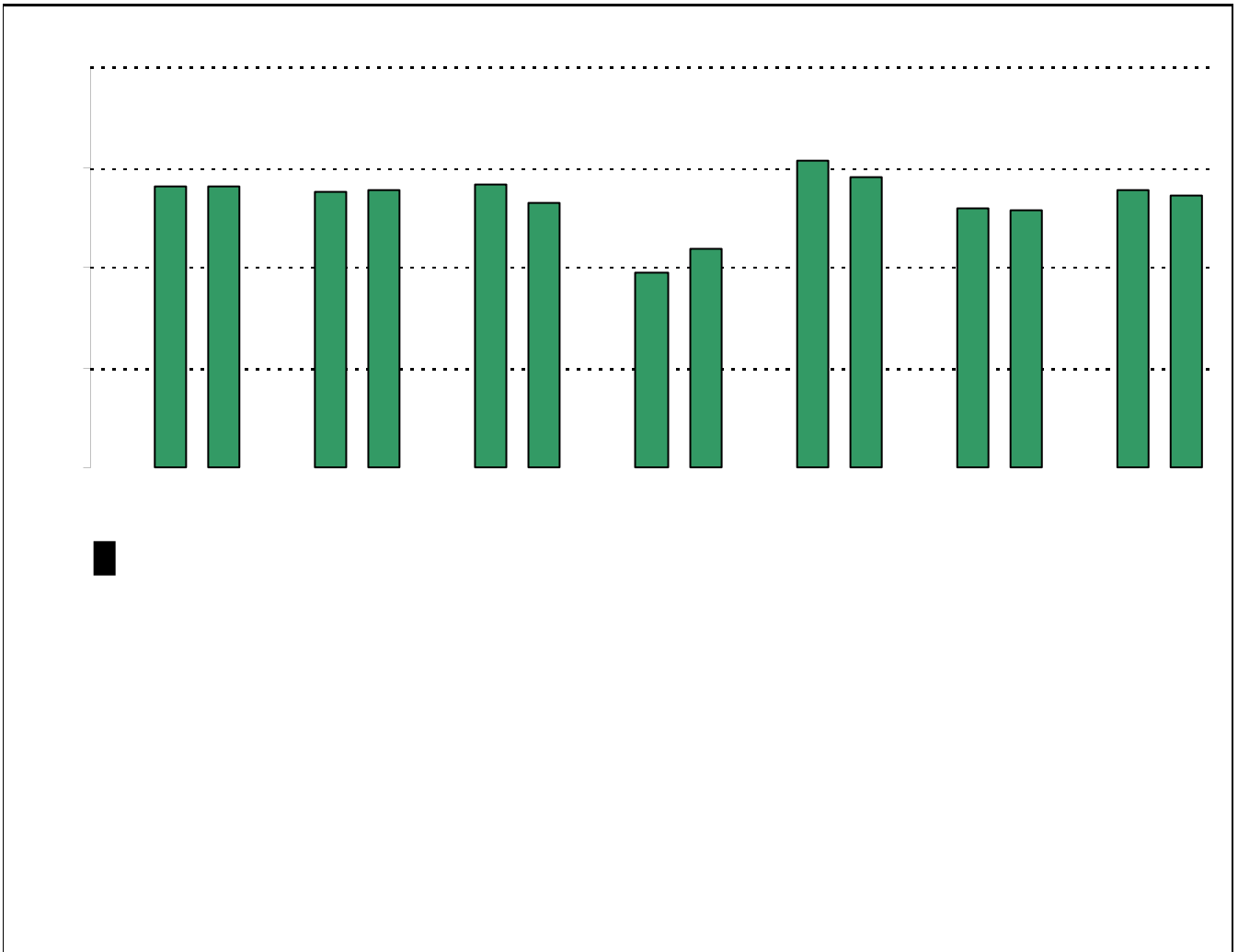
.....

.....

.....

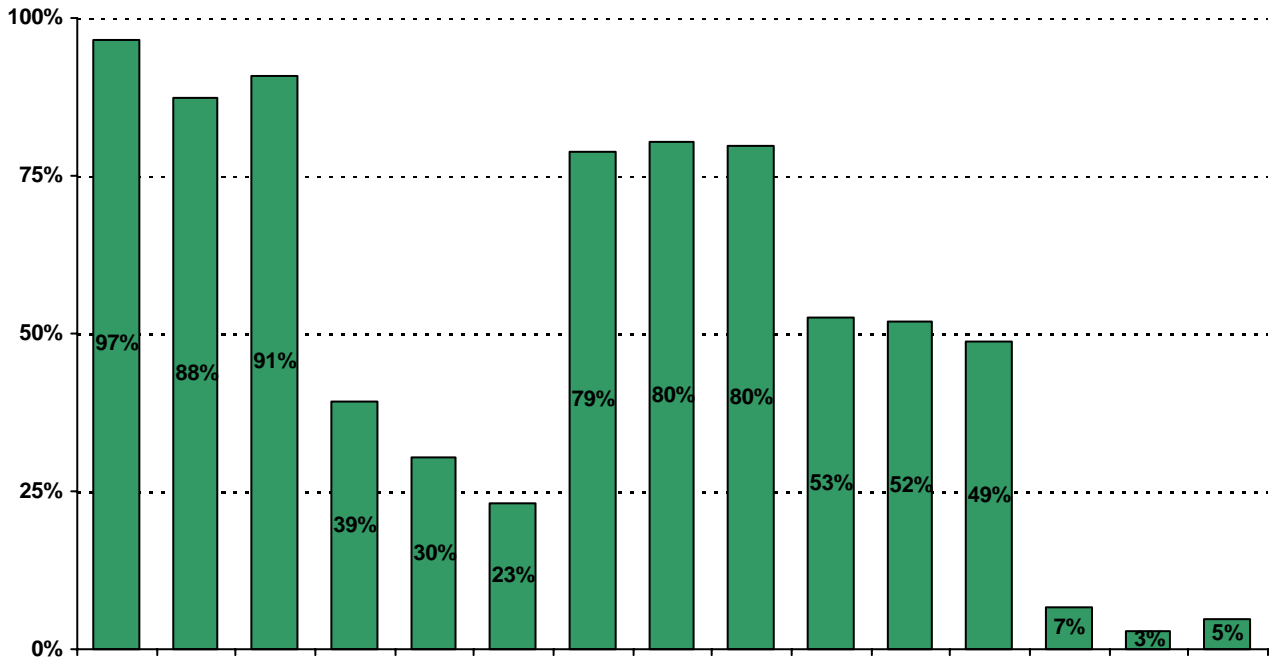
.....

.....



* Item(s) #17, #18, #19 added to the survey in 2006

20. My goals for my child include the following plans:



Item Response Details

Number of Akins High School Parent Responses, by Response Option

		Strongly Agree	Agree	Disagree	Strongly Disagree	Don't Know/NA
4a.	n = 149	31	49	12	10	47
3b.	n = 150	34	52	11	7	
3c.	n = 152	41	72	8	3	28
3d.	n = 152	42	73	16	6	15
3e.	n = 152	55	66	7	4	20
6a.	n = 149	31	49	12	10	47
6b.	n = 150	34	52	11	7	46
6c.	n = 148	33	59	14	6	36
6d.	n = 152	34	61	20	7	30
6e.	n = 151	54	70	10	5	12
7a.	n = 144	24	42	26	11	41
7b.	n = 145	25	43	25	11	41
7c.	n = 146	29	54	21	10	32
7d.	n = 147	20	48	27	11	41
7e.	n = 151	49	60	14	6	22
8a.	n = 149	33	37	14	6	59
8b.	n = 148	32	41	13	5	57
8c.	n = 149	35	57	13	3	41
8d.	n = 148	24	44	16	4	60
8e.	n = 152	51	57	9	2	33
9a.	n = 150	49	58	5	2	36
9b.	n = 149	43	59	7	0	40
9c.	n = 148	45	65	5	1	32
9d.	n = 147	35	63	9	1	39
9e.	n = 151	57	66	10	2	16

Number of Akins High School Parent Responses, by Response Option
(Continued)

		Strongly Agree	Agree	Disagree	Strongly Disagree	Don't Know/NA
13a.	n = 149	39	77	14	5	14
13b.	n = 149	31	63	23	8	24
13c.	n = 145	30	53	31	10	21
14a.	n = 151	36	70	21	5	19
14b.	n = 149	30	64	30	8	17
14c.	n = 150	26	46	29	12	37
15a.	n = 152	54	71	19	4	4
15b.	n = 147	38	53	34	8	14
15c.	n = 148	37	57	29	4	21
15d.	n = 149	48	70	15	7	9
15e.	n = 147	43	72	17	5	10
20.	n = 168	<p><i>Item 20 did not use the "Strongly Agree" to "Strongly Disagree" scale. Numbers below reflect the number of parents selecting each goal. These numbers will not sum to the total number of item respondents because of the 5-point Likert scale used for this item.</i></p>				